

# FOR LEASE

## PARKWAY PLAZA IV

7700 NE Parkway Dr | Vancouver, WA 98662



900 Washington St, Suite 850, Vancouver, WA  
360.750.5595 | www.fg-cre.com



## PROPERTY HIGHLIGHTS

- Class A office space in the highly sought-after Vancouver Mall submarket
- AVAILABLE:
  - Suite 205: 2,406 SF
  - \$26.50/SF, full service
- Easy access to SR-500 and I-205
- Parking ratio: 3.8/1,000 SF
- Common conference room
- Monument signage available
- Avanti market



## FOR MORE INFORMATION:

Adam Roselli, CCIM, SIOR | 360.597.0568 | aroselli@fg-cre.com  
Byron Roselli | 360.597.0567 | broseli@fg-cre.com

# FOR LEASE

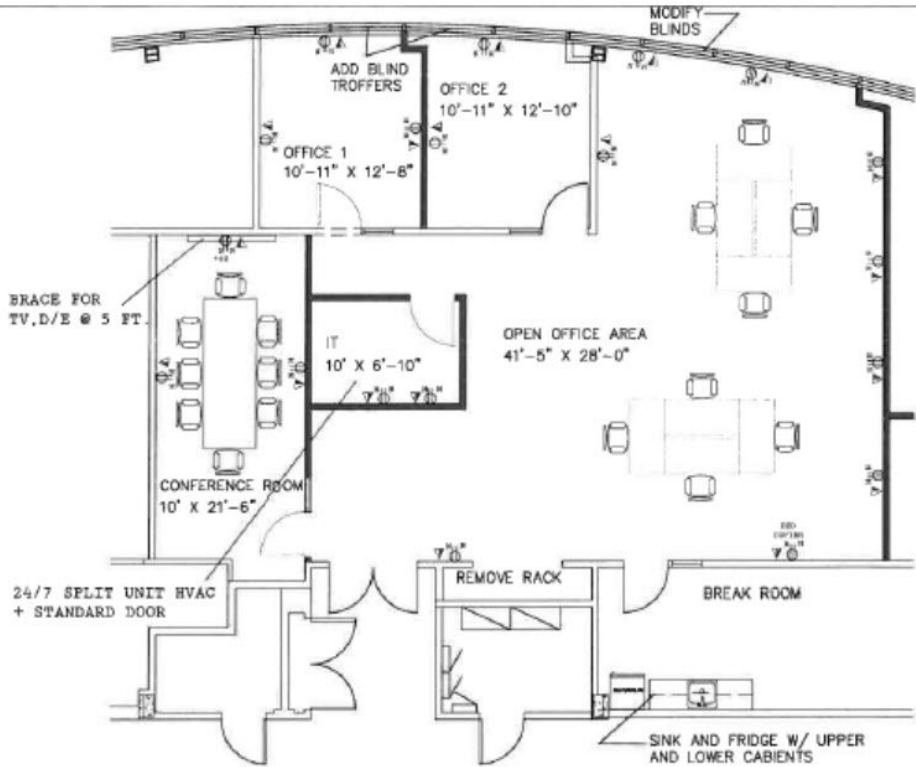
## PARKWAY PLAZA IV

7700 NE Parkway Dr | Vancouver, WA 98662



900 Washington St, Suite 850, Vancouver, WA  
360.750.5595 | www.fg-cre.com

Available Suite 205 – 2,406 RSF



### 2023 Demographics

	1-Mile	3-Mile	5-Mile
Est. Population	19,682	135,051	294,679
Avg. Household Income	\$69,142	\$82,302	\$88,839
Daytime Employment	10,639	45,513	106,445



This statement with the information it contains is given with the understanding that all the negotiations relating to the purchase, rental or leasing of the property described above shall be conducted through this office. The above information, while not guaranteed, has been secured from sources we believe to be reliable.