

FOR LEASE

# 1104 S. Philadelphia Road

Aberdeen, MD



## PROPERTY FEATURES

<b>Available SF</b>	3,200 SF & 5,369 SF
<b>Clear Height</b>	19'
<b>Loading</b>	At grade drive-in
<b>Parking</b>	150 space serve the project
<b>Notes</b>	Strategic location to APG and I-95, ideal for Defense, R&D and Small Bay Industrial Users

**DISTANCES TO:**

I-95	4 miles
Aberdeen Proving Grounds	6.7 miles
Baltimore, MD	28 miles
Philadelphia, PA	80 miles

**David Dannenfelser**

Managing Director

+1 410 382 4653

david.dannenfelser@cushwake.com

**Tyler Boykin**

Managing Director

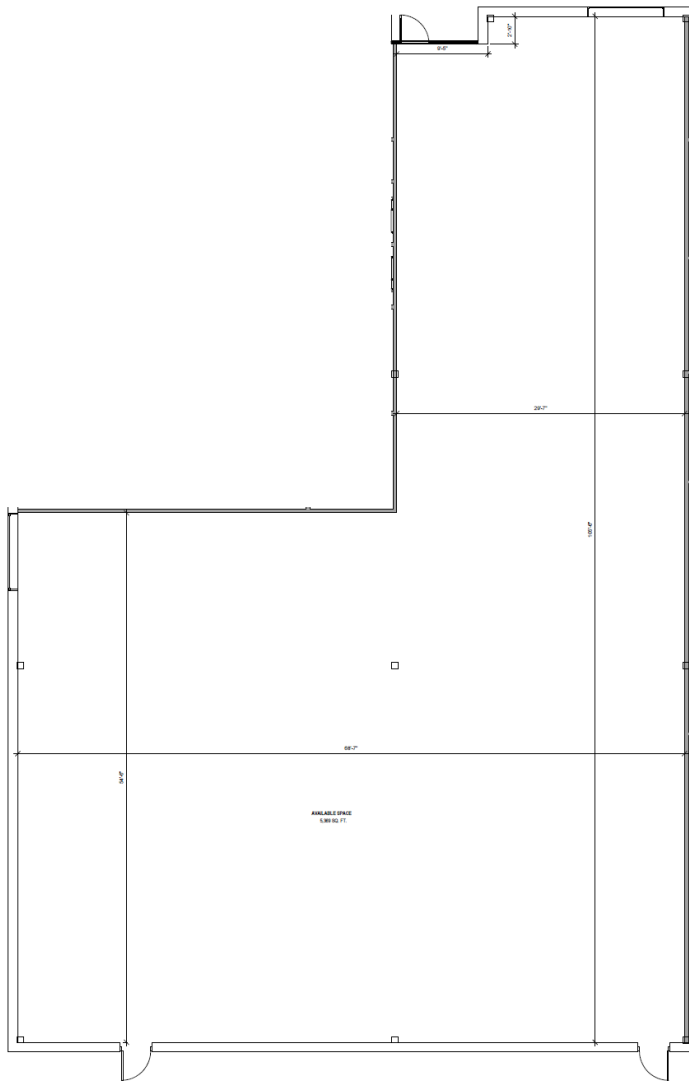
+1 410 864 3560

tyler.boykin@cushwake.com

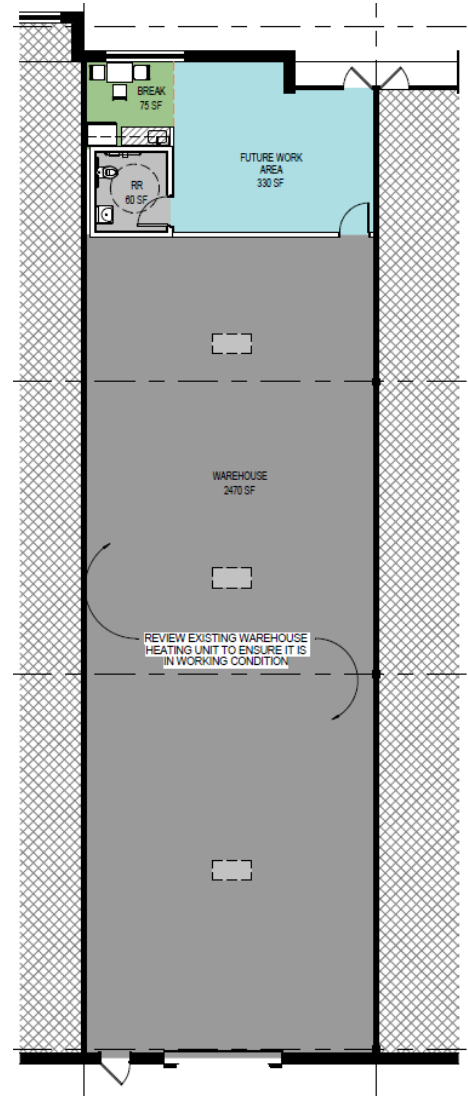
FOR LEASE

# 1104 S. Philadelphia Road

Aberdeen, MD



**5,369 SF**



**3,200 SF**

**David Dannenfels**  
Managing Director  
+1 410 382 4653  
david.dannenfels@cushwake.com

**Tyler Boykin**  
Managing Director  
+1 410 864 3560  
tyler.boykin@cushwake.com

One East Pratt Street  
Suite 700  
Baltimore, MD 21202  
+1 410 752 4285  
**cushmanwakefield.com**