



Colliers

Accelerating success.



10 W T A S M A N

INNOVATION CAMPUS

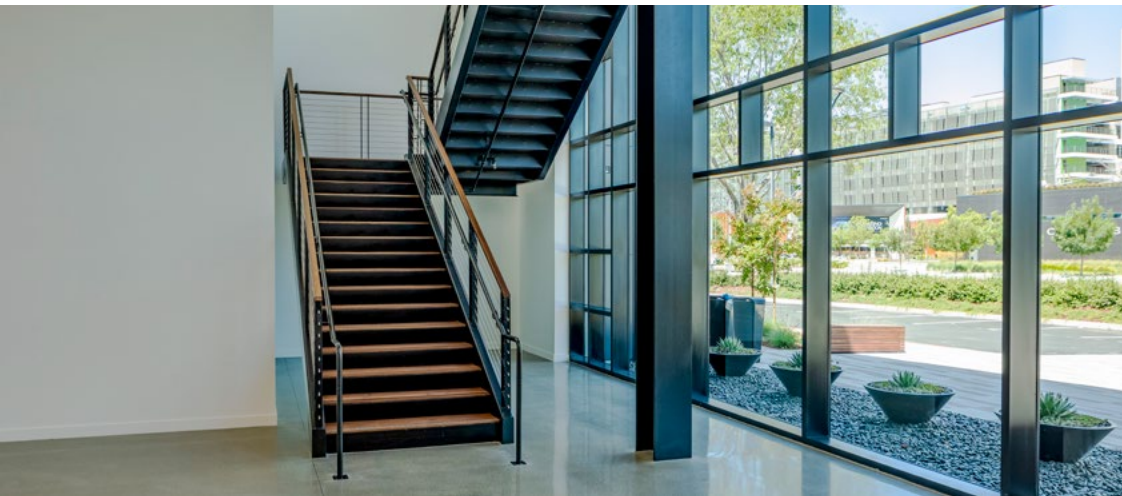


10 W T A S M A N

INNOVATION CAMPUS

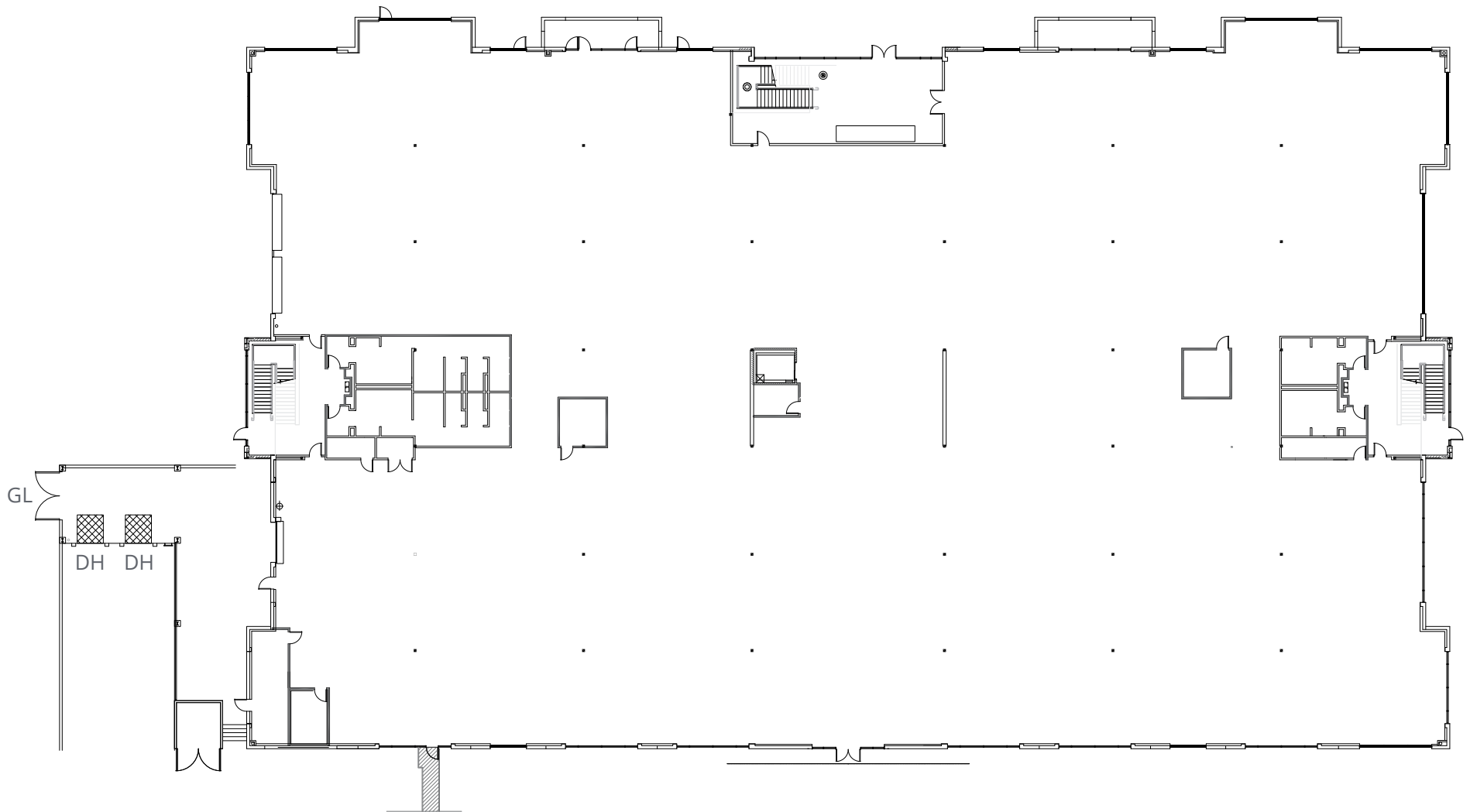
- ±105,039 SF
- First Floor 53,520 SF
- Second Floor 51,519 SF
- Fully renovated exterior, TI's to suit
- Lobby Improvements starting soon
- Clear Height 16'
- 4,000 Amps @ 277/480
- Building Signage and Monument Signage
- VTA Station across the street
- 2 Loading Docks plus Grade Level Access
- 2 Chargepoint EV Stations (4 cars)





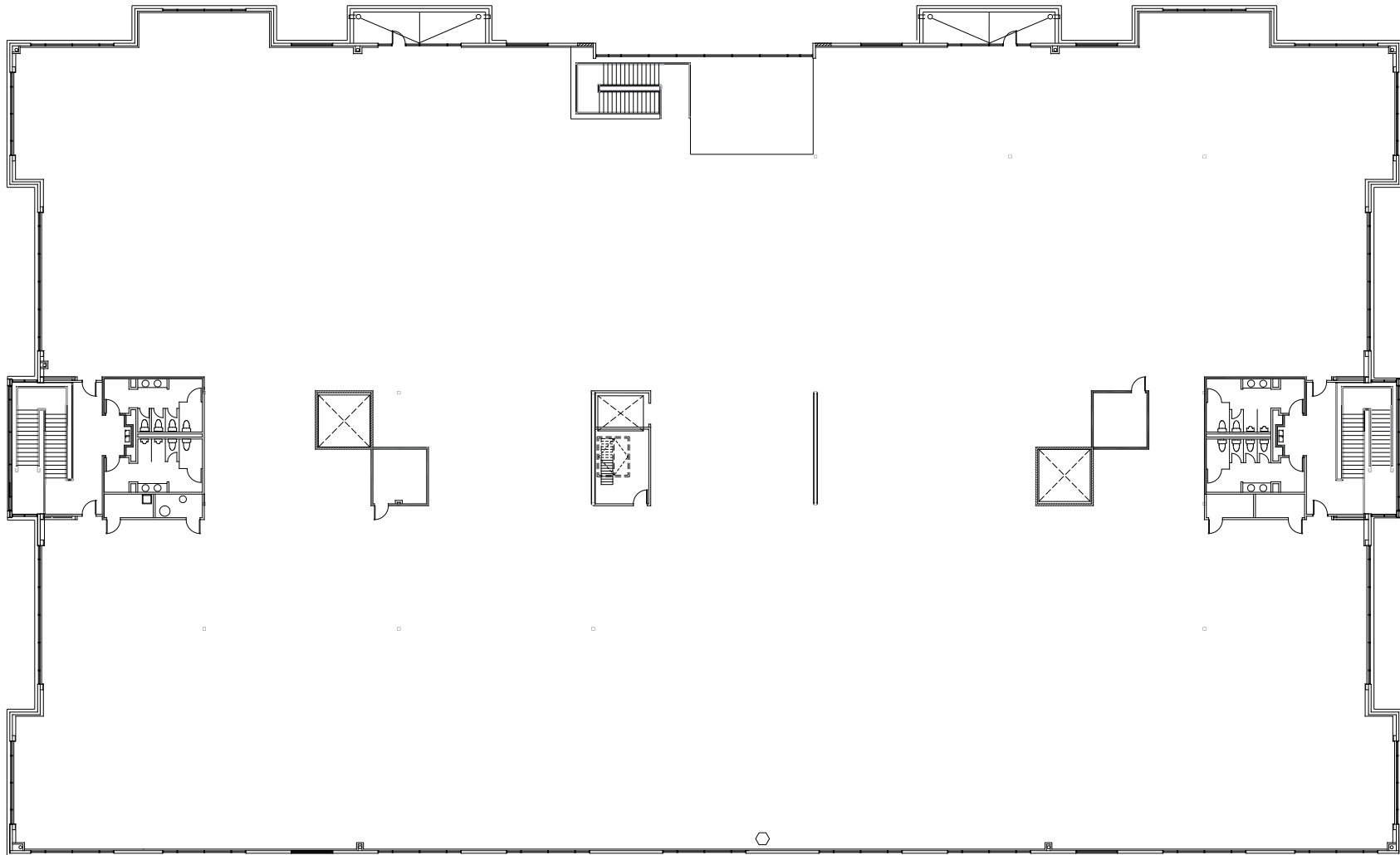
FLOOR PLAN

FLOOR 1: ±53,520 SF

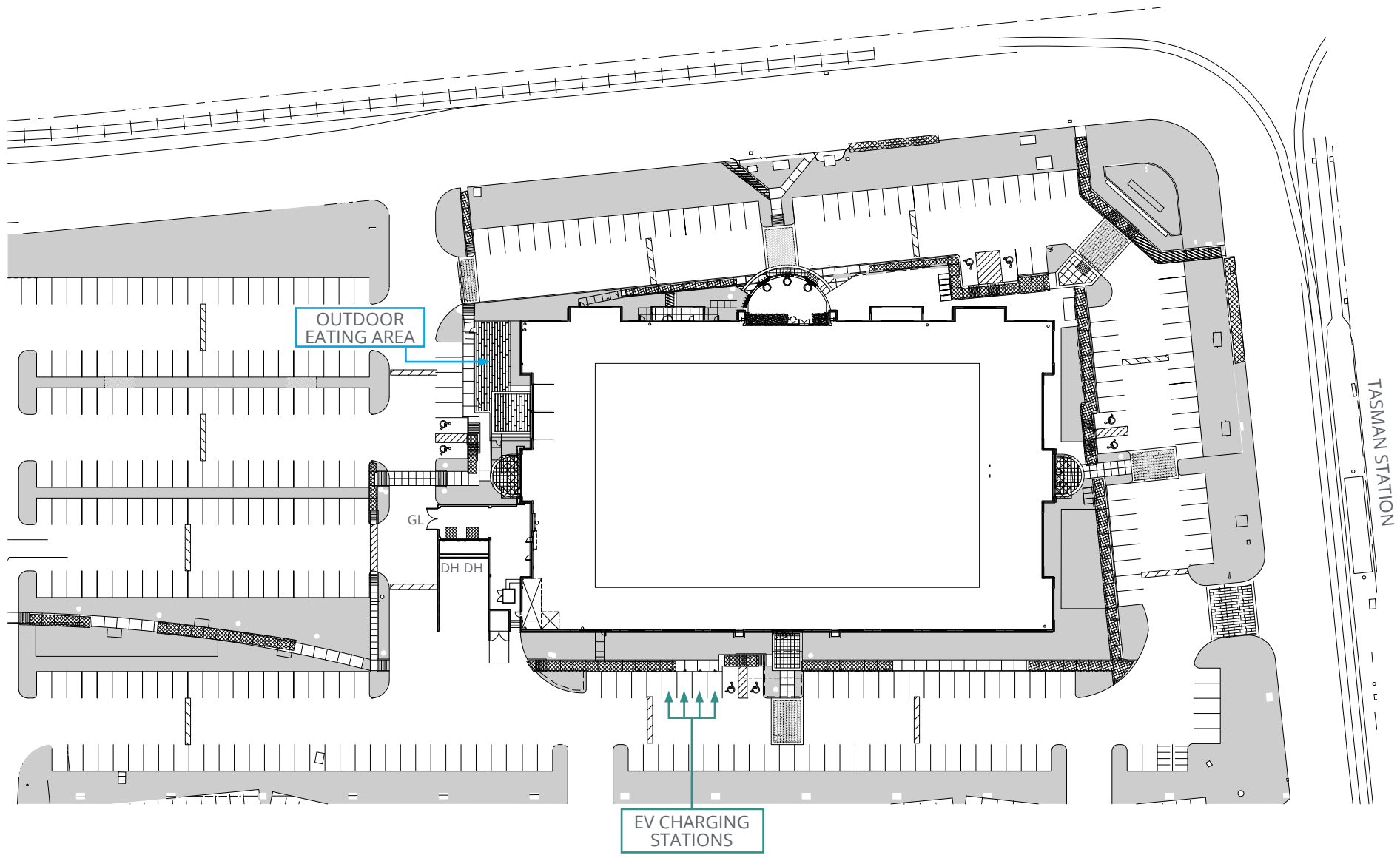


FLOOR PLAN

FLOOR 2: ±51,519 SF



SITE PLAN



NEIGHBORHOOD MAP





10wTASMAN

INNOVATION CAMPUS

Mark Zamudio

Executive Vice President
+1 408 282 3822
mark.zamudio@colliers.com
CA Lic. 00612338

Greg Galasso, SIOR

Senior Vice President
+1 408 282 3816
greg.galasso@colliers.com
CA Lic. 00869576

Dave Sandlin, SIOR

Executive Vice President
+1 408 282 3988
dave.sandlin@colliers.com
CA Lic. 00767849



Accelerating success.

225 W Santa Clara St, 10th Floor, Suite 1000 | San Jose, CA 95113 | P: +1 408 282 3800 | F: +1 408 282 3855 | colliers.com/siliconvalley

Copyright © 2021 Colliers International. Information herein has been obtained from sources deemed reliable, however its accuracy cannot be guaranteed. The user is required to conduct their own due diligence and verification.