

# Courtyard Hotel

4600 Mill Creek Parkway  
Kansas City, Missouri

## Country Club Plaza

### Property Details

- + 1,953 SF turn key restaurant space
- + Patio seating available
- + Street front entrance inside the Courtyard Marriott, a 123 room hotel
- + Dedicated parking garage on site
- + 12,327 cars per day along Mill Creek Parkway
- + Walking distance to Main Street Streetcar expansion
- + Walking distance to Saint Luke's Hospital



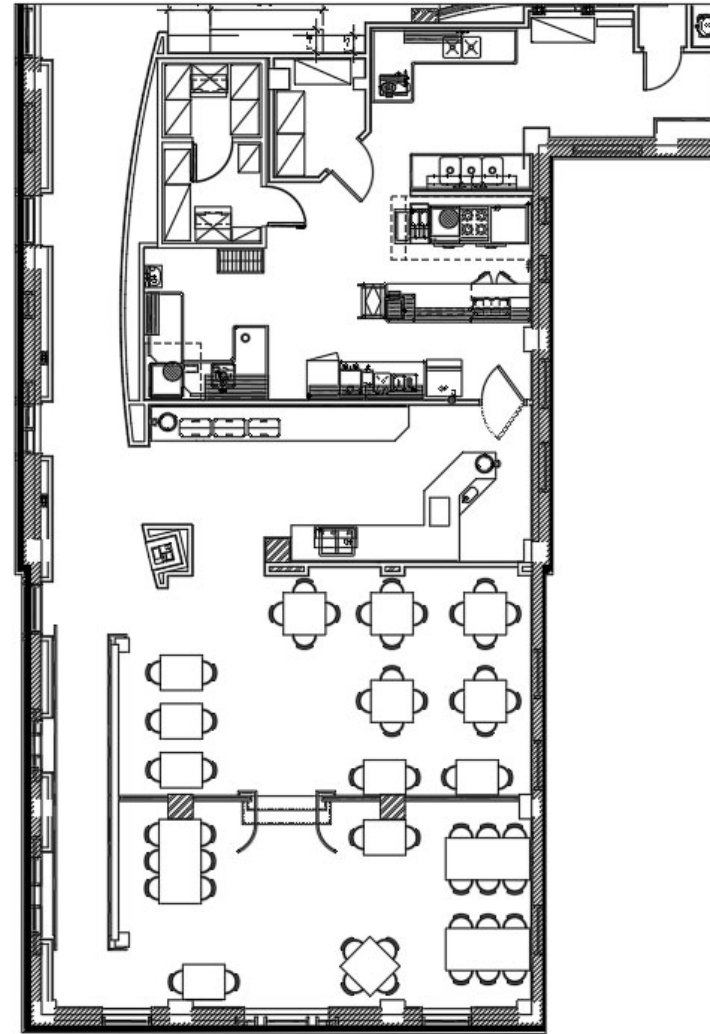
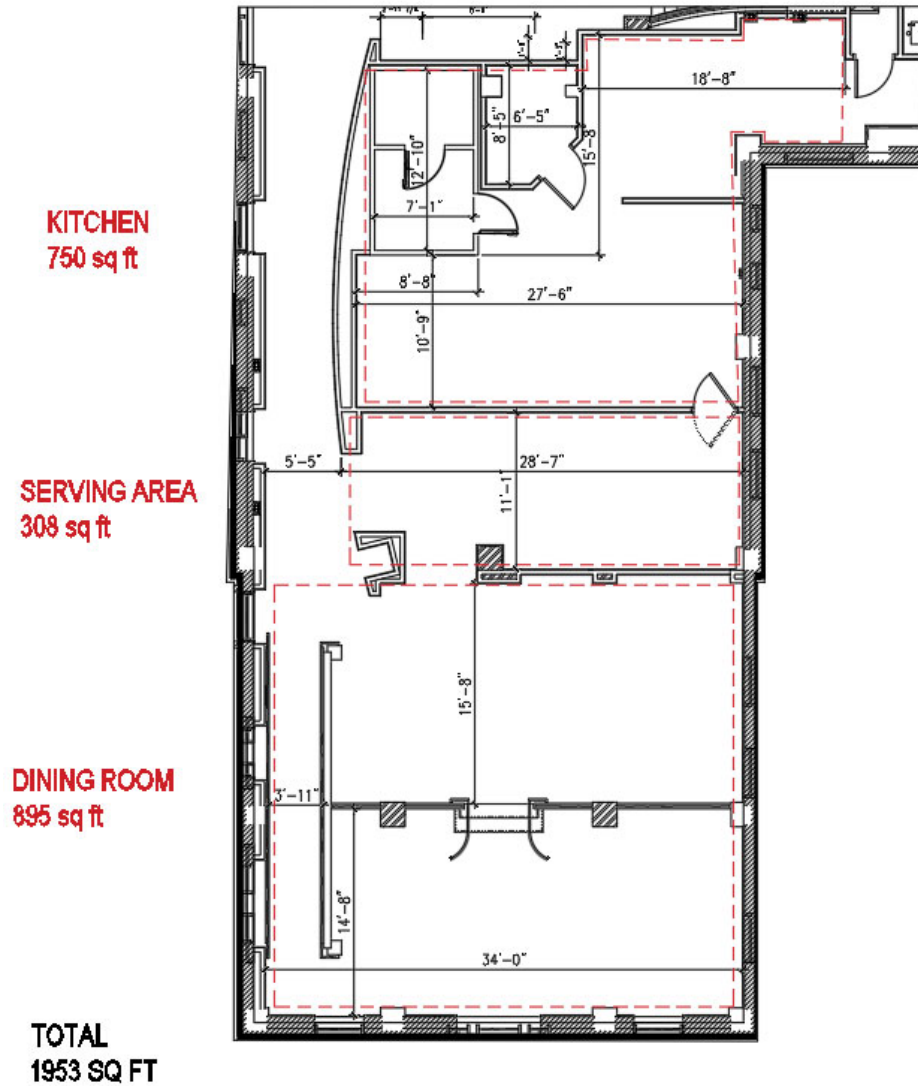
## Contact Us

**Matt Rau**  
Senior Associate  
+1 816 968 5831  
matt.rau@cbre.com

# Courtyard Hotel

4600 Mill Creek Parkway | Kansas City, Missouri 64111

For Lease



EXISTING LAYOUT

© 2021 CBRE, Inc. All rights reserved. This information has been obtained from sources believed reliable, but has not been verified for accuracy or completeness. You should conduct a careful, independent investigation of the property and verify all information. Any reliance on this information is solely at your own risk. CBRE and the CBRE logo are service marks of CBRE, Inc. All other marks displayed on this document are the property of their respective owners, and the use of such logos does not imply any affiliation with or endorsement of CBRE. Photos herein are the property of their respective owners. Use of these images without the express written consent of the owner is prohibited.