

FOR SALE

DEVELOPMENT OPPORTUNITY OR OWNER-USER PLAY

436 E COMPTON BLVD & 111 S WILLOW AVE, COMPTON, CA



±6,986 SF Buildings on ±28,031 SF of Land in Compton, CA

CHRISTOPHER GIORDANO
213.225.7219
christopher.giordano@kidder.com
LIC N° 01928706

GEORGE CRAWFORD
213.225.7212
george.crawford@kidder.com
LIC N° 01962453

KIDDER.COM

This information supplied herein is from sources we deem reliable. It is provided without any representation, warranty, or guarantee, expressed or implied as to its accuracy. Prospective Buyer or Tenant should conduct an independent investigation and verification of all matters deemed to be material, including, but not limited to, statements of income and expenses. Consult your attorney, accountant, or other professional advisor.





PROPERTY OVERVIEW

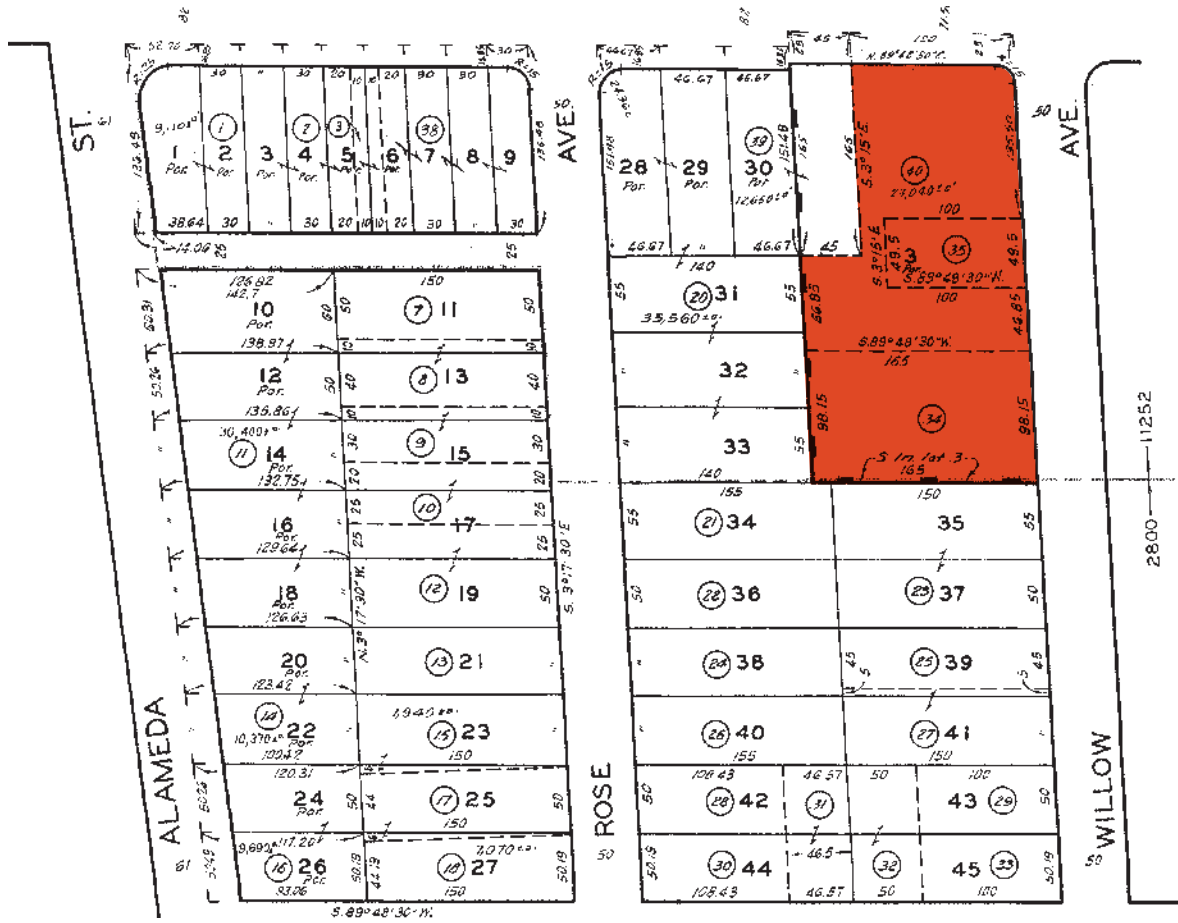
ADDRESS	436 E Compton Blvd & 111 S Willow Ave Compton, CA 90221
ASKING PRICE	\$3,400,000
PRICE/SF	\$486.68
BUILDING SIZE	6,986 SF
LAND SIZE	28,031 SF
APN	6179-002-040 & 6179-002-035
YEAR BUILT	1921 & 1941
ZONING	COCL



KIDDER.COM

This information supplied herein is from sources we deem reliable. It is provided without any representation, warranty, or guarantee, expressed or implied as to its accuracy. Prospective Buyer or Tenant should conduct an independent investigation and verification of all matters deemed to be material, including, but not limited to, statements of income and expenses. Consult your attorney, accountant, or other professional advisor.

PARCEL MAP



Additional Information Resources for Development

CITY OF COMPTON ONLINE PORTAL

Planning Department

Code Enforcement

Business License Department

Public Works

→ [VIEW ONLINE PORTAL](#)

CHRISTOPHER GIORDANO 213.225.7219 | christopher.giordano@kidder.com | LIC N° 01928706

GEORGE CRAWFORD 213.225.7212 | george.crawford@kidder.com | LIC N° 01962453

KIDDER.COM

This information supplied herein is from sources we deem reliable. It is provided without any representation, warranty, or guarantee, expressed or implied as to its accuracy. Prospective Buyer or Tenant should conduct an independent investigation and verification of all matters deemed to be material, including, but not limited to, statements of income and expenses. Consult your attorney, accountant, or other professional advisor.

