

FOR LEASE

1812 ROCHESTER ROAD



1812 ROCHESTER ROAD ROCHESTER HILLS, MI 48307

PROPERTY HIGHLIGHTS:

- +/-14,000 SF office/medical building located on Rochester Road just north of Hamlin in Rochester Hills
- Outstanding visibility from Rochester Road
- 50+ private parking spaces
- Close proximity to M-59 and I-75
- 3,104 SF space available immediately
- Lease Rate Medical: \$20.00/SF NNN
- Lease Rate Office: \$18.50/SF Gross

The information provided herein along with any attachment(s) was obtained from sources believed to be reliable, however, Friedman Real Estate makes no guarantees, warranties, or representations as to the completeness or accuracy of such information and legal counsel is advised. All information provided is subject to verification and no liability for reliance on such information or errors or omissions is assumed. The presentation of this property is submitted subject to errors, omissions, change of price or conditions, prior sale or lease, or withdrawal without notice. Copyright © 2025 Friedman Real Estate. All rights reserved.

FOR MORE INFORMATION PLEASE CONTACT:



ANDREW BOWER
andrew.bower@freg.com

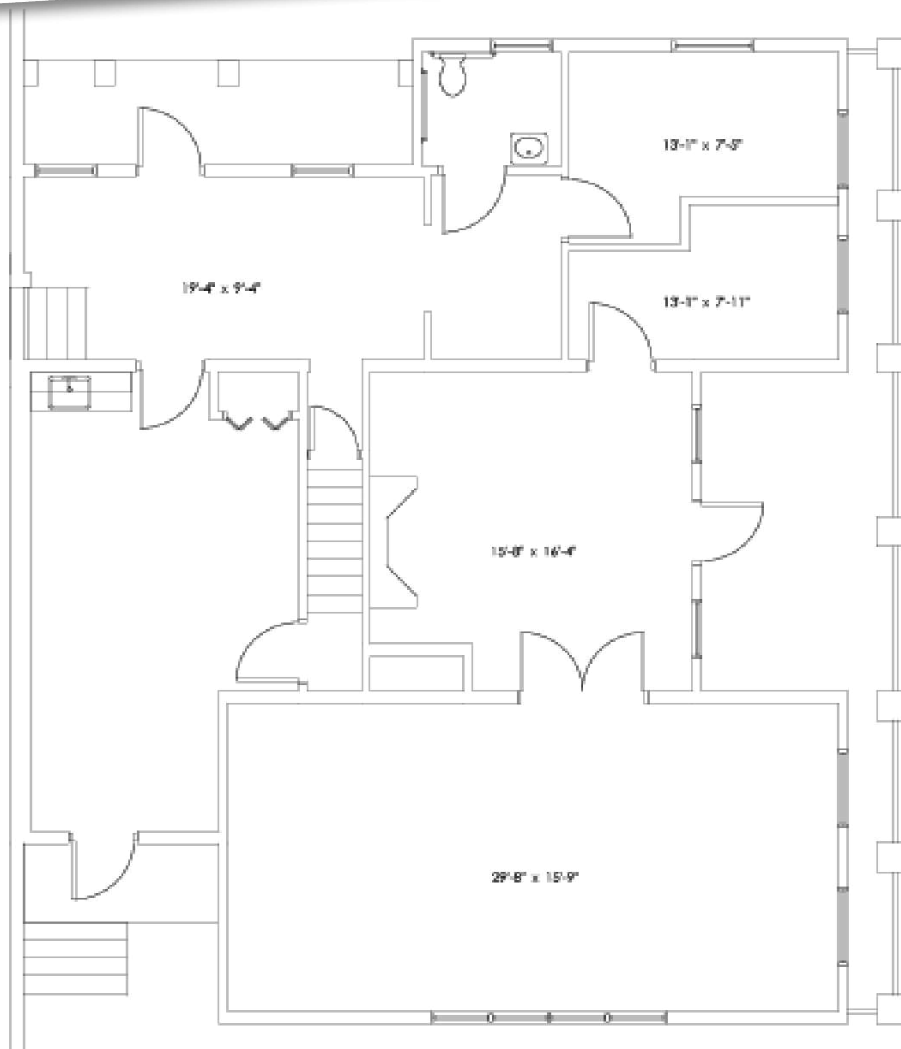
248.324.2000

eCODE 435



1812 ROCHESTER ROAD

SUITE 101 FLOOR PLAN



MAIN FLOOR



NORTH
SCALE :
1/8"=1'-0"



FRIEDMAN
INTEGRATED REAL ESTATE SOLUTIONS

34975 W. Twelve Mile Road, Suite 200
Farmington Hills, MI 48331
Phone: 248.324.2000 Fax: 248.848.3506
Web: www.friedmanrealty.com

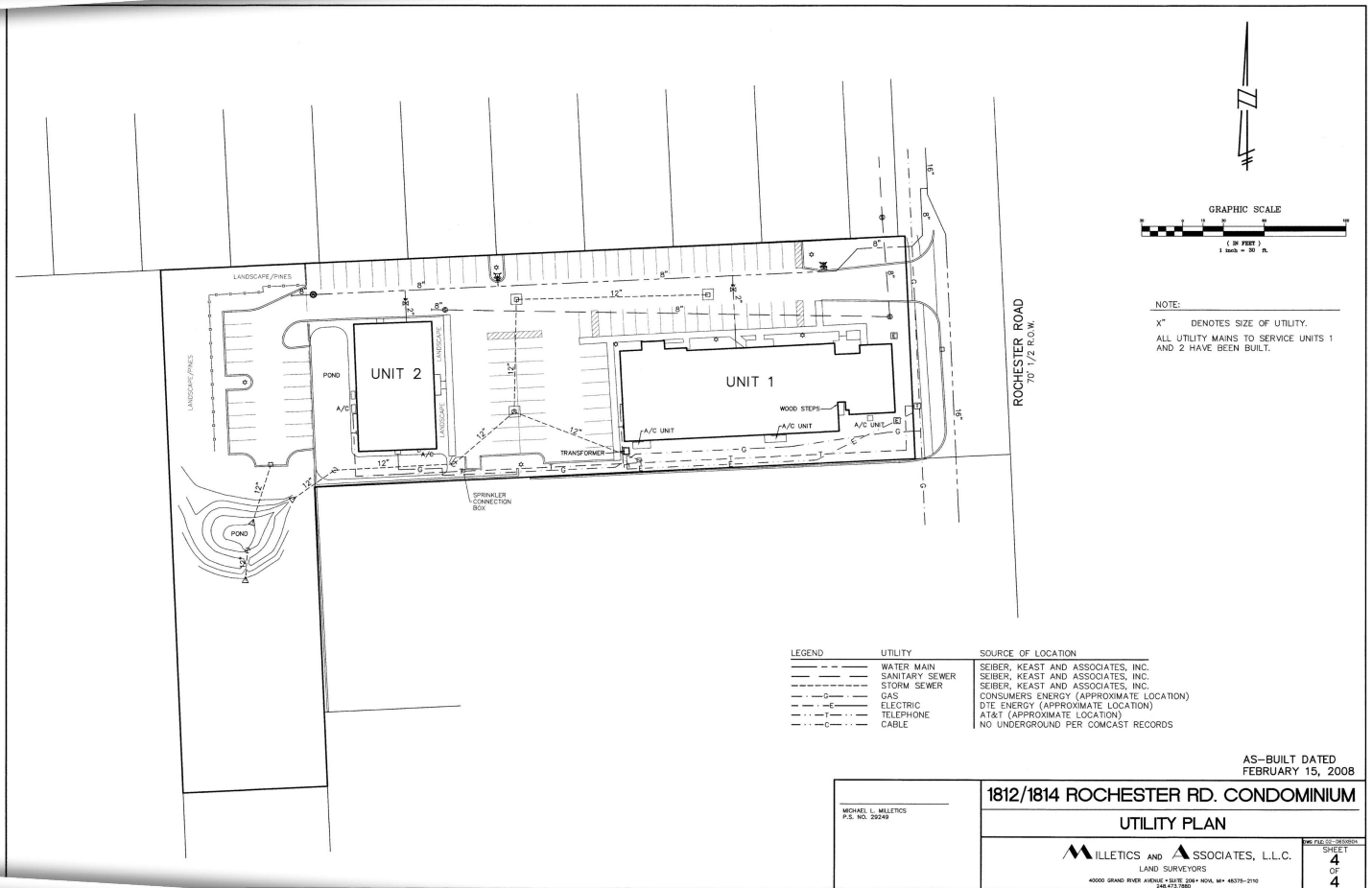
1812 ROCHESTER
ROCHESTER, MI 48307

3,104 SQFT
FOR DETAILS PLEASE CALL
248-324-2000

KEY PLAN



1812 ROCHESTER ROAD UTILITY PLAN



FOR MORE INFORMATION **PLEASE CONTACT:**



ANDREW BOWER
andrew.bower@freg.com