

8000 RONDA DRIVE
CANTON, MICHIGAN



**SIGNATURE
ASSOCIATES**
KNOW SIGNATURE | KNOW RESULTS

INDUSTRIAL FOR SALE OR LEASE

For Sale: 47,430 Square Feet

For Lease: 8,608-29,613 Square Feet



PROPERTY FEATURES

- 47,430 square feet for sale
- 8,608 – 29,613 square feet for lease
- 2,500 square feet office
- 14'6" clear height
- (4) 10' x 12' grade level doors, (4) truckwells
- LED lights
- 480-volt power
- (60) parking spaces
- Could be used as a warehouse/distribution or divided into a multi-tenant building
- Sale Price: \$4,973,010 (\$104.85/sq. ft.)
- Contact brokers for lease rate information



For more information, please contact:

STEVE GORDON
(248) 948 0101
sgordon@signatureassociates.com

DRAKE FILIPPIS
(248) 799 3161
dfilippis@signatureassociates.com

SIGNATURE ASSOCIATES
One Towne Square, Suite 1200
Southfield, MI 48076
www.signatureassociates.com

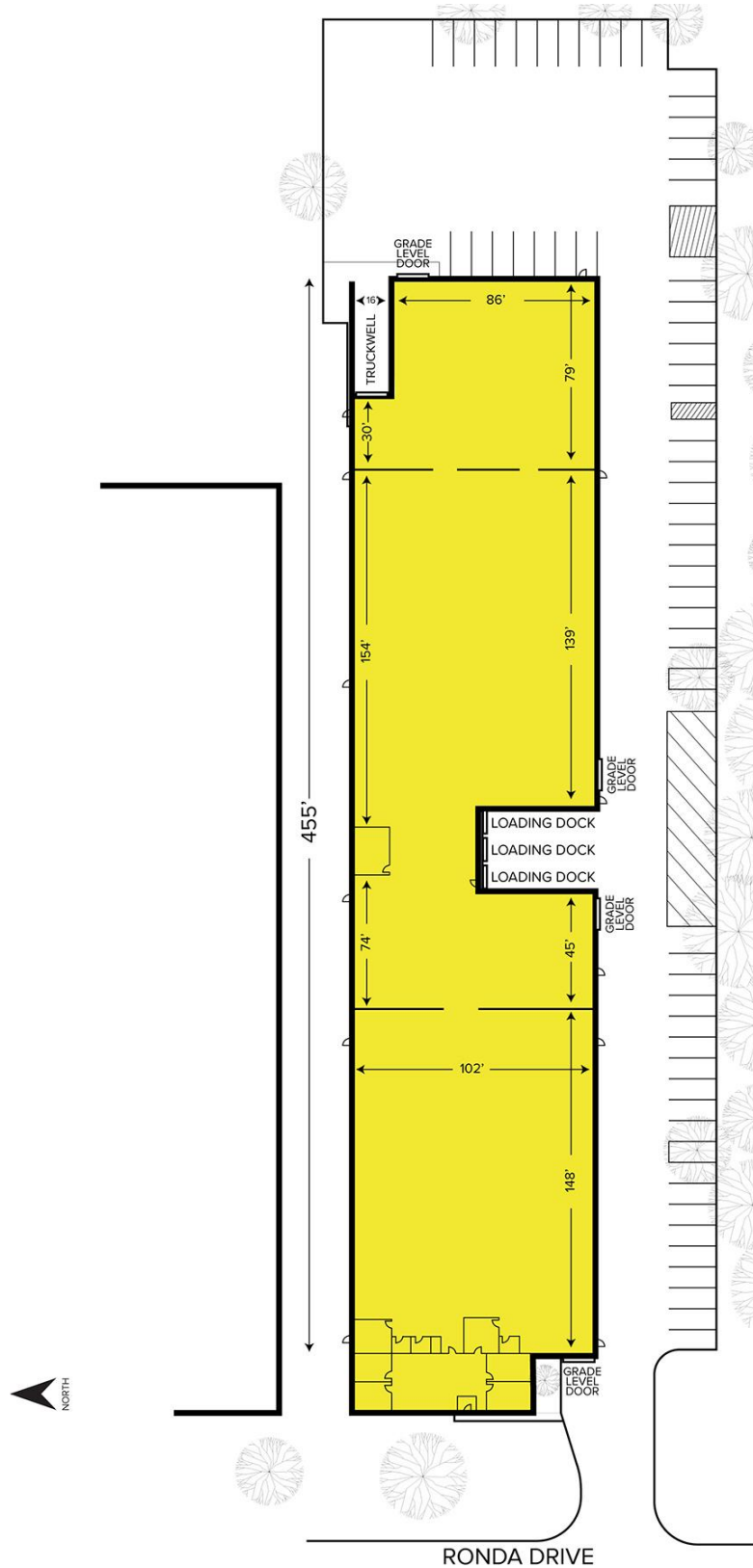
8000 Ronda Drive – Canton, Michigan

Industrial For Sale or Lease

For Lease –
8,608-29,613 SF

For Sale –
47,430 SF

Site Plan



For more information, please contact:

STEVE GORDON

(248) 948 0101

sgordon@signatureassociates.com

DRAKE FILIPPIS

(248) 799 3161

dfilippis@signatureassociates.com

SIGNATURE ASSOCIATES

One Towne Square, Suite 1200

Southfield, MI 48076

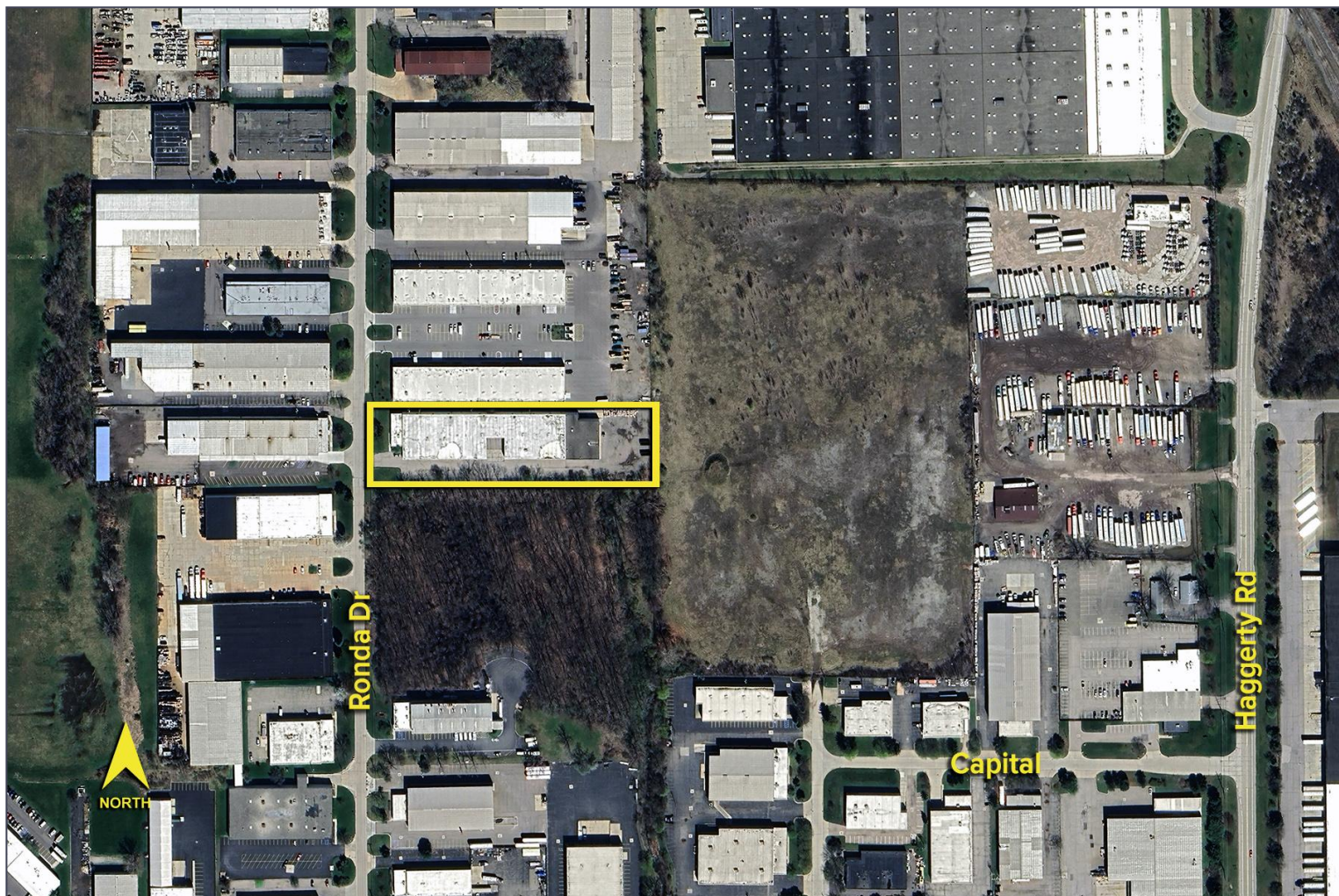
www.signatureassociates.com

8000 Ronda Drive – Canton, Michigan

Industrial For Sale or Lease

For Lease –
8,608-29,613 SF
For Sale –
47,430 SF

Aerial



For more information, please contact:

STEVE GORDON
(248) 948 0101
sgordon@signatureassociates.com

DRAKE FILIPPIS
(248) 799 3161
dfilippis@signatureassociates.com

SIGNATURE ASSOCIATES
One Towne Square, Suite 1200
Southfield, MI 48076
www.signatureassociates.com