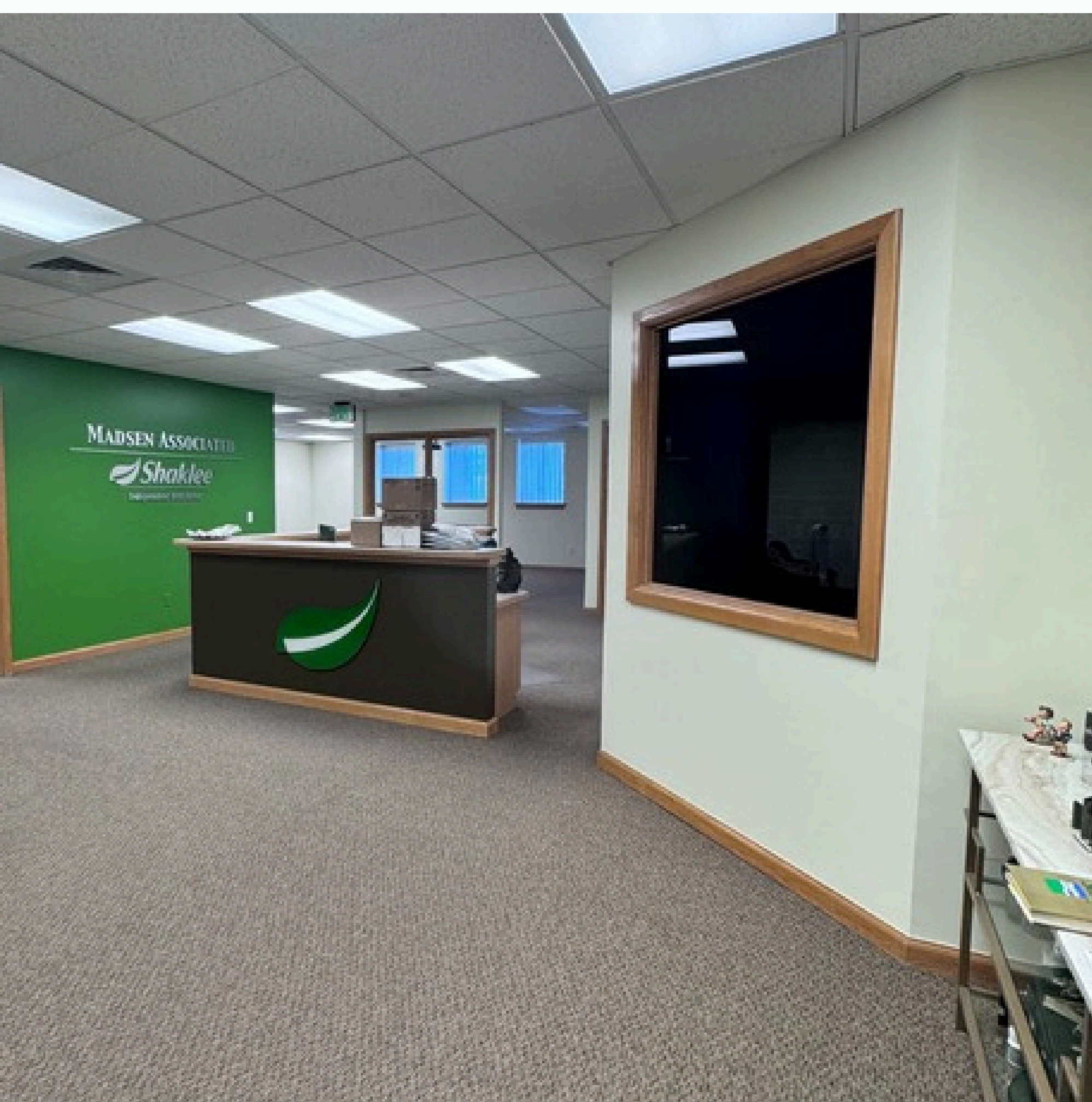




PROFESSIONAL OFFICE SPACE FOR LEASE

2560 E 3300 S,
Salt Lake City, UT 84109

PRIME MILLCREEK LOCATION
\$19 PER SF
NNN



PROPERTY FEATURES

- Located in a highly desirable Millcreek submarket
- Professional, well-maintained building
- Elevator access in excellent condition
- Opportunity for cross referrals from dental office
- Private Entrance for clients and employees
- Approx 2,289 sqft



Brooke Moore
801.571.8833



WWW.TRICOINC.COM

2560 E 3300 S, SALT LAKE CITY, UT 84109

PROFESSIONAL OFFICE SPACE FOR LEASE



Highly desirable 2,289 SF basement office/medical suite located in a prime, high-visibility Millcreek location.

The building features a well-maintained elevator, ample on-site parking, and upgrades throughout, offering a professional and efficient environment for clients and staff alike. The space is in excellent condition and provides flexible layout potential for a variety of office or medical users.

Ideal for a supplement company, wellness-focused business, medical office, or similar professional use seeking a central, accessible location with strong surrounding demographics.



Brooke Moore
801.571.8833



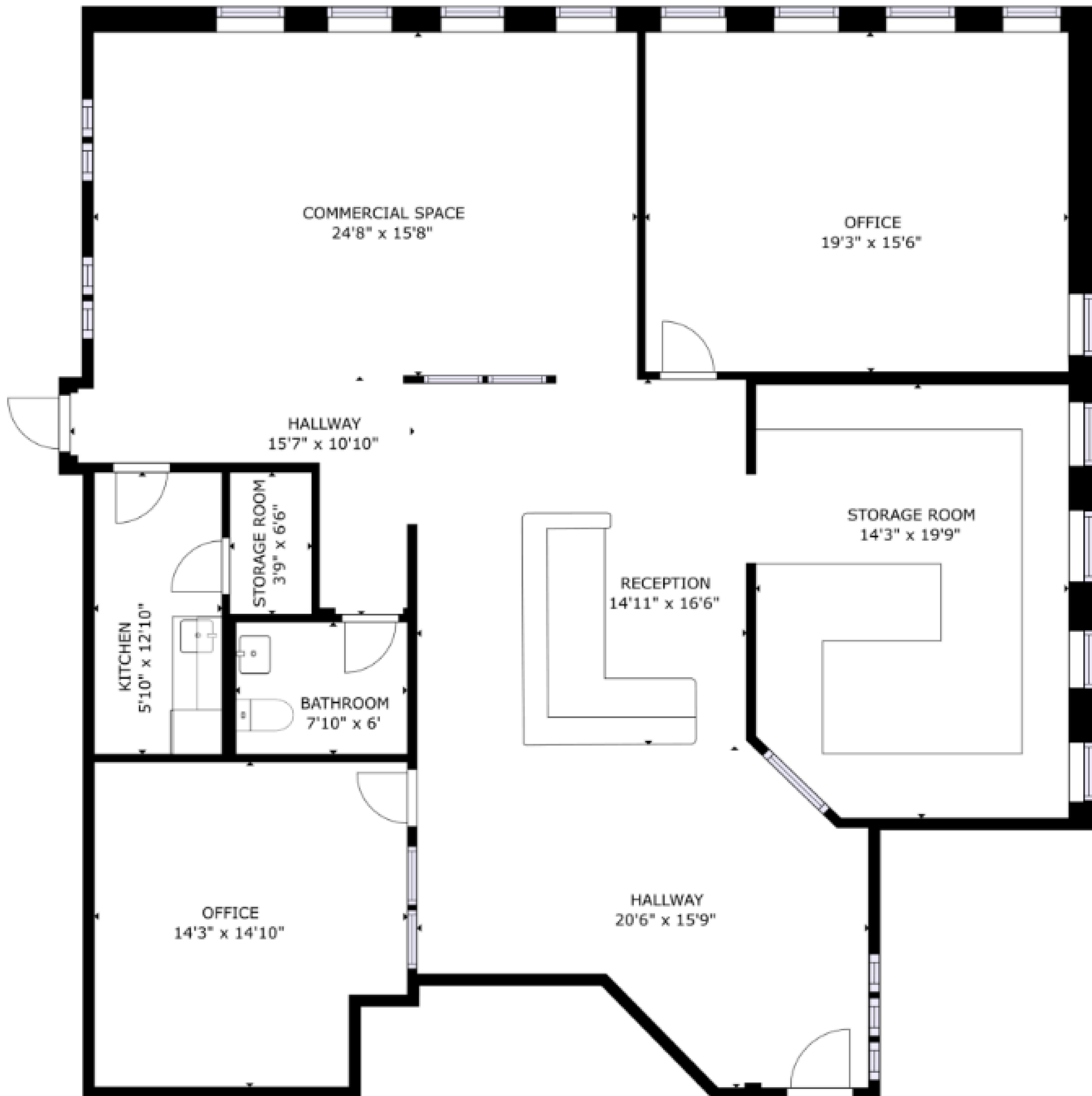
WWW.TRICOINC.COM

2560 E 3300 S, SALT LAKE CITY, UT 84109

PROFESSIONAL OFFICE SPACE FOR LEASE

FLOOR PLAN

2,289 SQFT



Brooke Moore
801.571.8833



WWW.TRICOINC.COM