

Specifications

±120,580 SF TOTAL BUILDING SIZE	±51,158 SF AVAILABLE UNIT
±4.15 Acres TOTAL ACREAGE	Heat & AC WAREHOUSE
Gas Suspended HEAT	HVAC OFFICE
Wet System SPRINKLER	±6,000 SF COOLER
±22'-25' CEILING HEIGHT	±3,000 SF FREEZER
Industrial ZONING	±\$2.42 PSF TAXES & CAM
3 TB and 1 DI Ramp 40' Deep Interior Loading LOADING	
At Ninth St NJ Transit Light Rail Station 2 MI to NJ Turnpike, Interchange 14C 10 MI to Newark Airport ACCESSIBILITY	

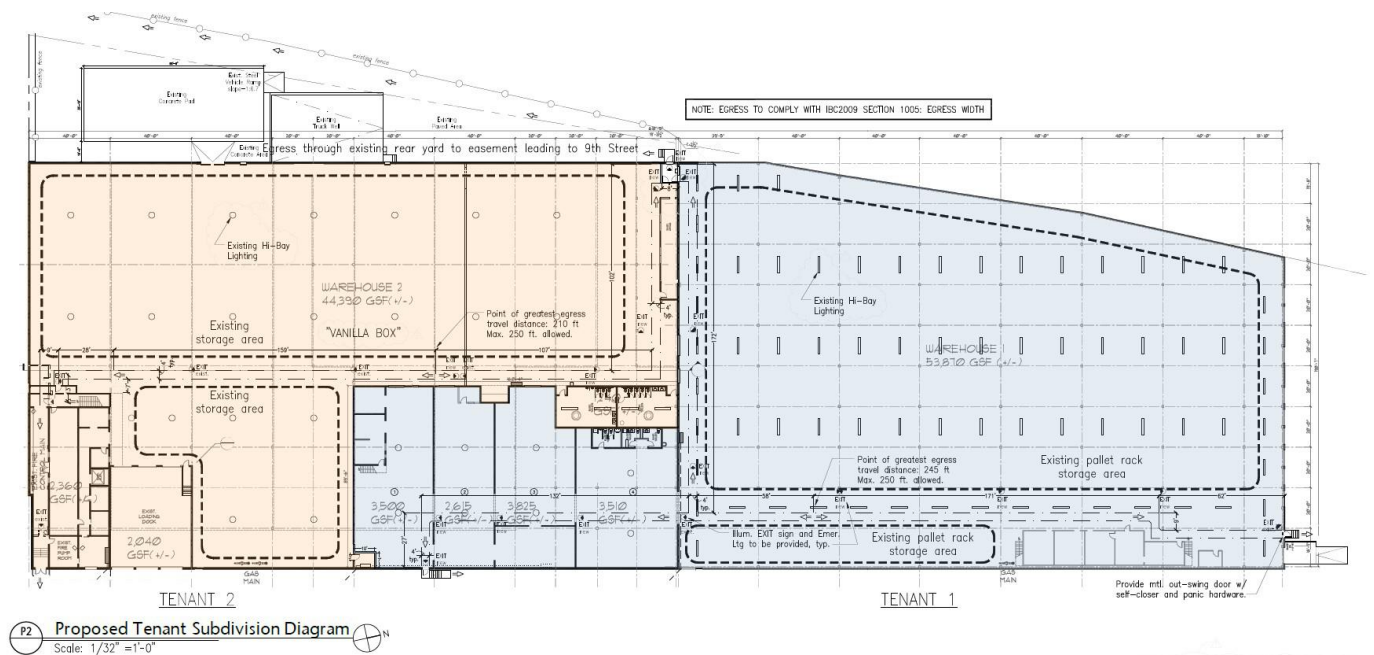
For additional property information or to arrange an inspection, please contact the exclusive brokers:

Jason M. Crimmins, CCIM, SIOR
President
973.379.6644 x 122
jmcrimmins@blauberg.com

Alessandro (Alex) Conte, CCIM, SIOR
Executive Vice President
973.379.6644 x 131
aconte@blauberg.com

Peter J. Murano, Jr., SIOR
Managing Executive Director
973.379.6644 x 114
pjmurano@blauberg.com

Troy Schaafsma
Director
973.379.6644 x 116
troys@blauberg.com



For additional property information or to arrange an inspection, please contact the exclusive brokers:

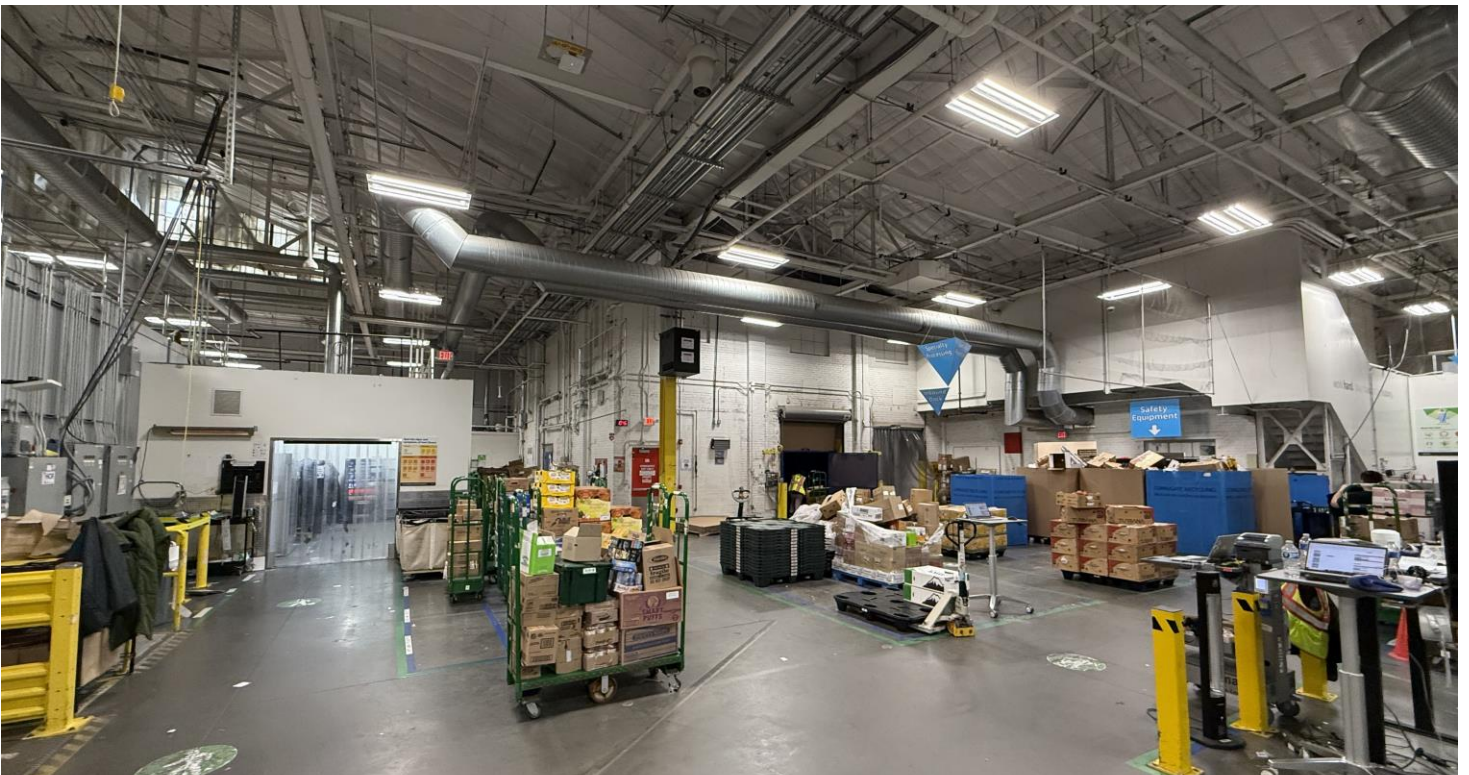
Jason M. Crimmins, CCIM, SIOR
President
973.379.6644 x 122
jmcrimmins@blauberg.com

Alessandro (Alex) Conte, CCIM, SIOR
Executive Vice President
973.379.6644 x 131
aconte@blauberg.com

Peter J. Murano, Jr., SIOR
Managing Executive Director
973.379.6644 x 114
pjmurano@blauberg.com

Troy Schaafsma
Director
973.379.6644 x 116
troys@blauberg.com

FOR LEASE | 940 MONROE STREET | HOBOKEN, NJ



For additional property information or to arrange an inspection, please contact the exclusive brokers:

Jason M. Crimmins, CCIM, SIOR
President
973.379.6644 x 122
jmcrimmins@blauberg.com

Alessandro (Alex) Conte, CCIM, SIOR
Executive Vice President
973.379.6644 x 131
aconte@blauberg.com

Peter J. Murano, Jr., SIOR
Managing Executive Director
973.379.6644 x 114
pjmurano@blauberg.com

Troy Schaafsma
Director
973.379.6644 x 116
troys@blauberg.com

The information contained herein has been obtained from sources considered to be reliable, but no guarantee of its accuracy is made by this company. In addition, no representation is made respecting zoning, condition of title, dimensions, or any matters of a legal or environmental nature. Such matters should be referred to legal counsel for determination. Terms and conditions are subject to change without prior notice. Subject to errors and omissions.



FOR LEASE | 940 MONROE STREET | HOBOKEN, NJ



For additional property information or to arrange an inspection, please contact the exclusive brokers:

Jason M. Crimmins, CCIM, SIOR
President
973.379.6644 x 122
jmcrimmins@blauberg.com

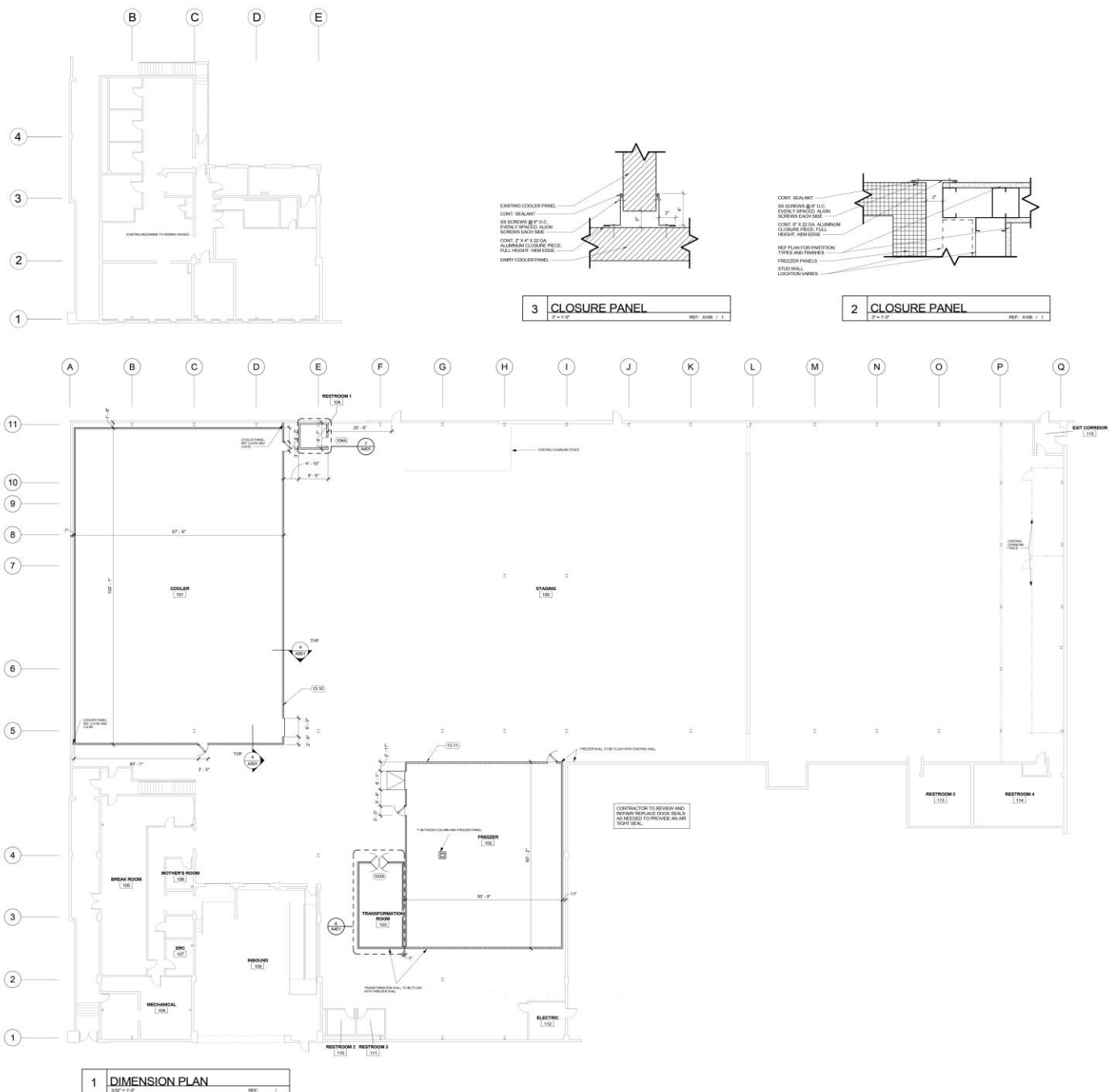
Alessandro (Alex) Conte, CCIM, SIOR
Executive Vice President
973.379.6644 x 131
aconte@blauberg.com

Peter J. Murano, Jr., SIOR
Managing Executive Director
973.379.6644 x 114
pjmurano@blauberg.com

Troy Schaafsma
Director
973.379.6644 x 116
troys@blauberg.com

The information contained herein has been obtained from sources considered to be reliable, but no guarantee of its accuracy is made by this company. In addition, no representation is made respecting zoning, condition of title, dimensions, or any matters of a legal or environmental nature. Such matters should be referred to legal counsel for determination. Terms and conditions are subject to change without prior notice. Subject to errors and omissions.





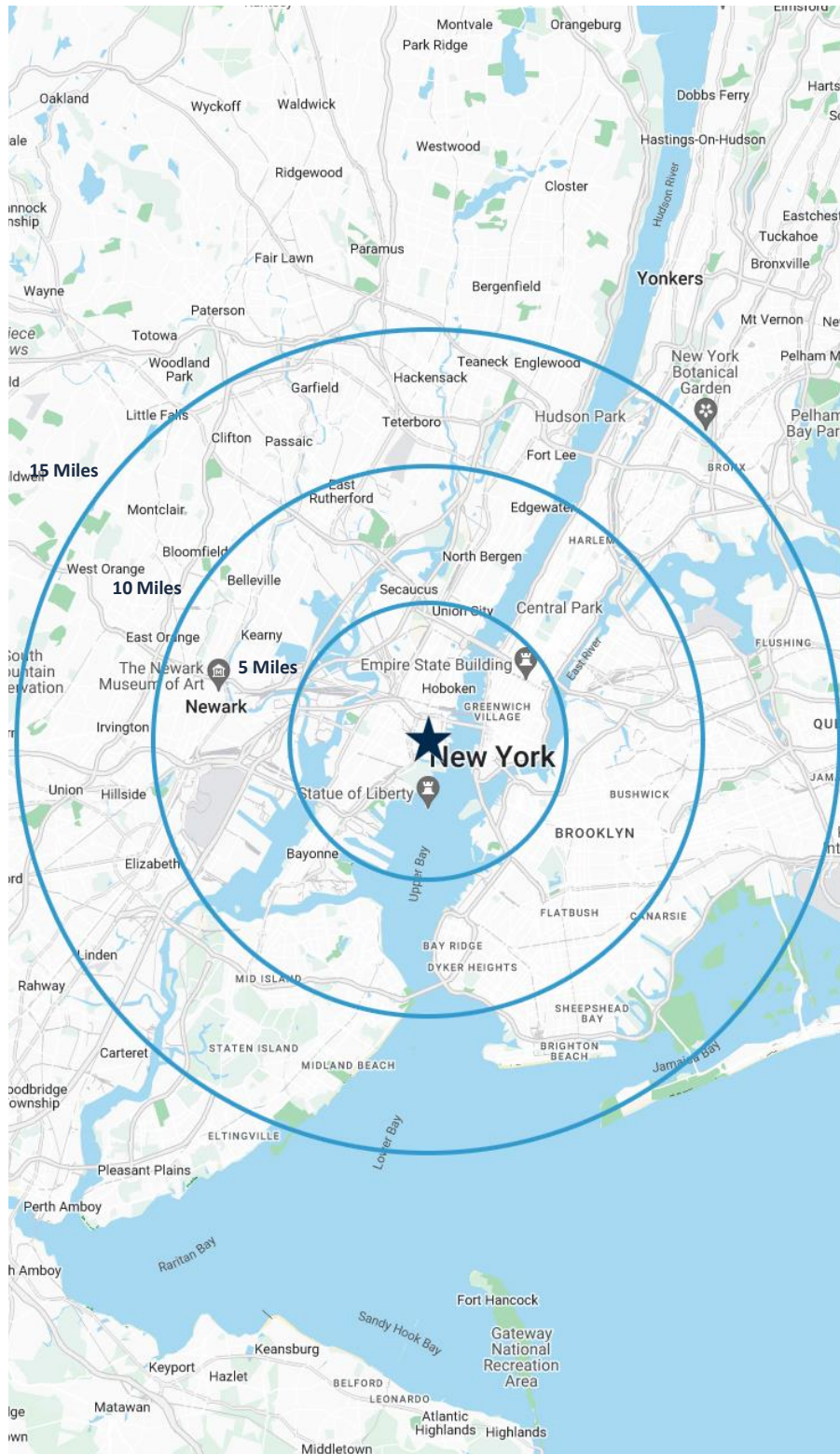
For additional property information or to arrange an inspection, please contact the exclusive brokers:

Jason M. Crimmins, CCIM, SIOR
President
973.379.6644 x 122
jmcrimmins@blauberg.com

Alessandro (Alex) Conte, CCIM, SIOR
Executive Vice President
973.379.6644 x 131
aconte@blauberg.com

Peter J. Murano, Jr., SIOR
Managing Executive Director
973.379.6644 x 114
pjmurano@blauberg.com

Troy Schaafsma
Director
973.379.6644 x 116
troys@blauberg.com



5 MILES

- Total Population: 1.8M
- Households: 885,789
- Median Household Income: \$132,614
- Average Household Size: 2.0
- Transportation to Work: 1.04M
- Labor Force: 1.55M

10 MILES

- Total Population: 6.77M
- Households: 2.78M
- Median Household Income: \$96,970
- Average Household Size: 2.4
- Transportation to Work: 3.5M
- Labor Force: 5.57M

15 MILES

- Total Population: 10.82M
- Households: 4.25M
- Median Household Income: \$93,112
- Average Household Size: 2.5
- Transportation to Work: 5.43M
- Labor Force: 8.84M

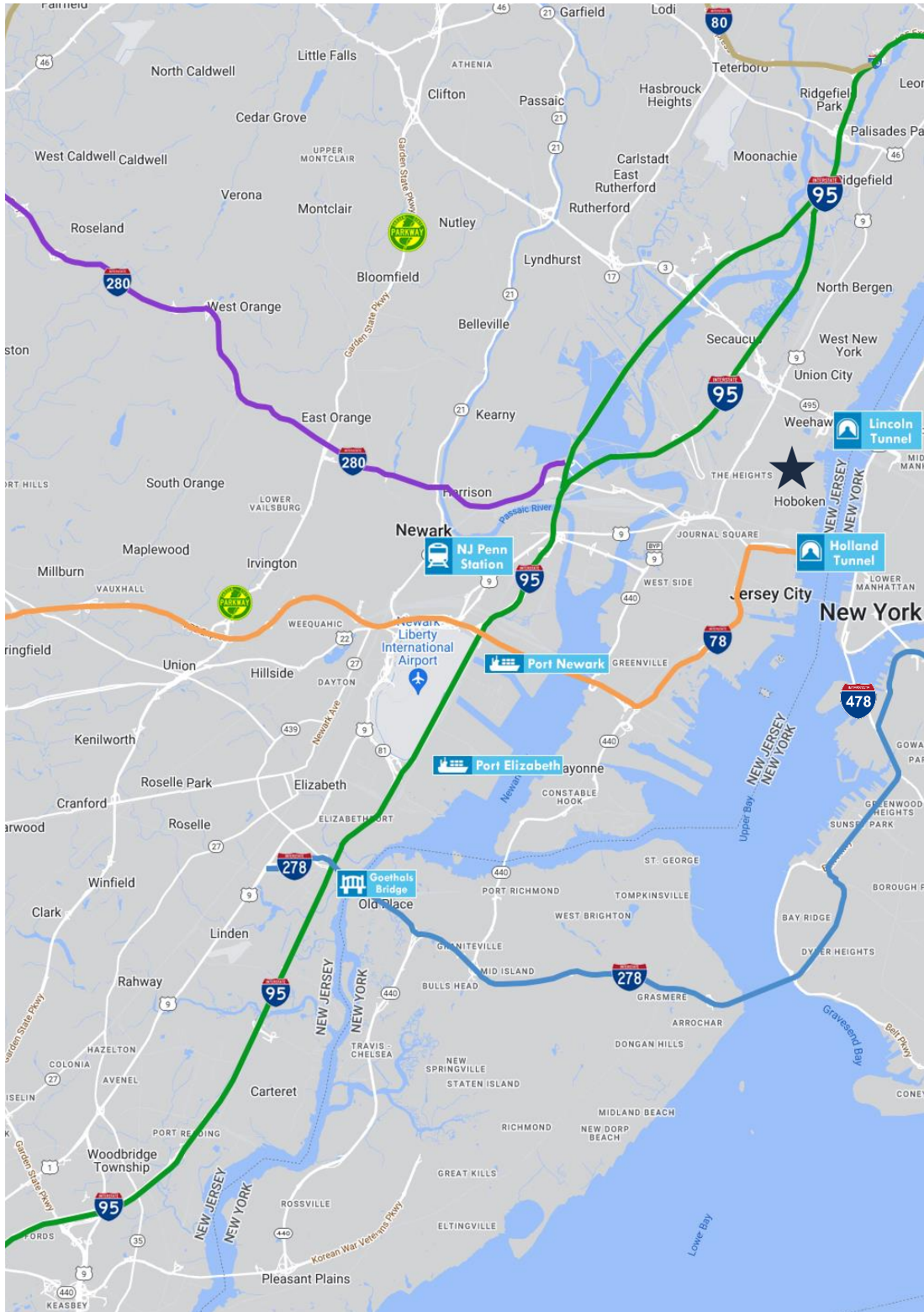
For additional property information or to arrange an inspection, please contact the exclusive brokers:

Jason M. Crimmins, CCIM, SIOR
President
973.379.6644 x 122
jmcrimmins@blauberg.com

Alessandro (Alex) Conte, CCIM, SIOR
Executive Vice President
973.379.6644 x 131
aconte@blauberg.com

Peter J. Murano, Jr., SIOR
Managing Executive Director
973.379.6644 x 114
pjmurano@blauberg.com

Troy Schaafsma
Director
973.379.6644 x 116
troys@blauberg.com



ACCESSIBILITY



1.3 MI
I-78



1.6 MI
Holland Tunnel



2.0 MI
I-95 Exit 14



2.2 MI
Lincoln Tunnel



2.7 MI
US Hwy 1 & 9



8.7 MI
Penn Station



10.3 MI
Newark Airport



10.7 MI
Ports Newark
& Elizabeth

For additional property information or to arrange an inspection, please contact the exclusive brokers:

Jason M. Crimmins, CCIM, SIOR
President
973.379.6644 x 122
jmcrimmins@blauberg.com

Alessandro (Alex) Conte, CCIM, SIOR
Executive Vice President
973.379.6644 x 131
aconte@blauberg.com

Peter J. Murano, Jr., SIOR
Managing Executive Director
973.379.6644 x 114
pjmurano@blauberg.com

Troy Schaafsma
Director
973.379.6644 x 116
troys@blauberg.com