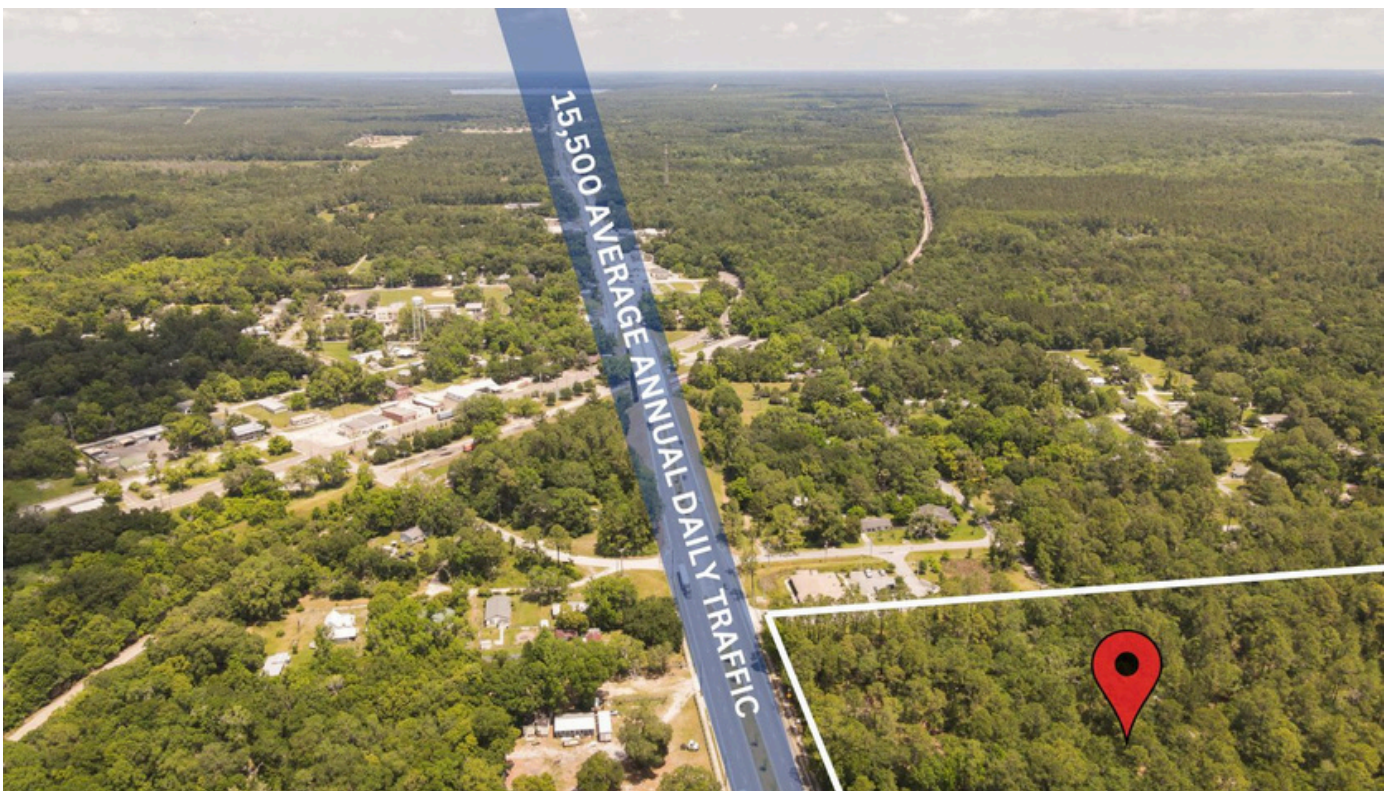
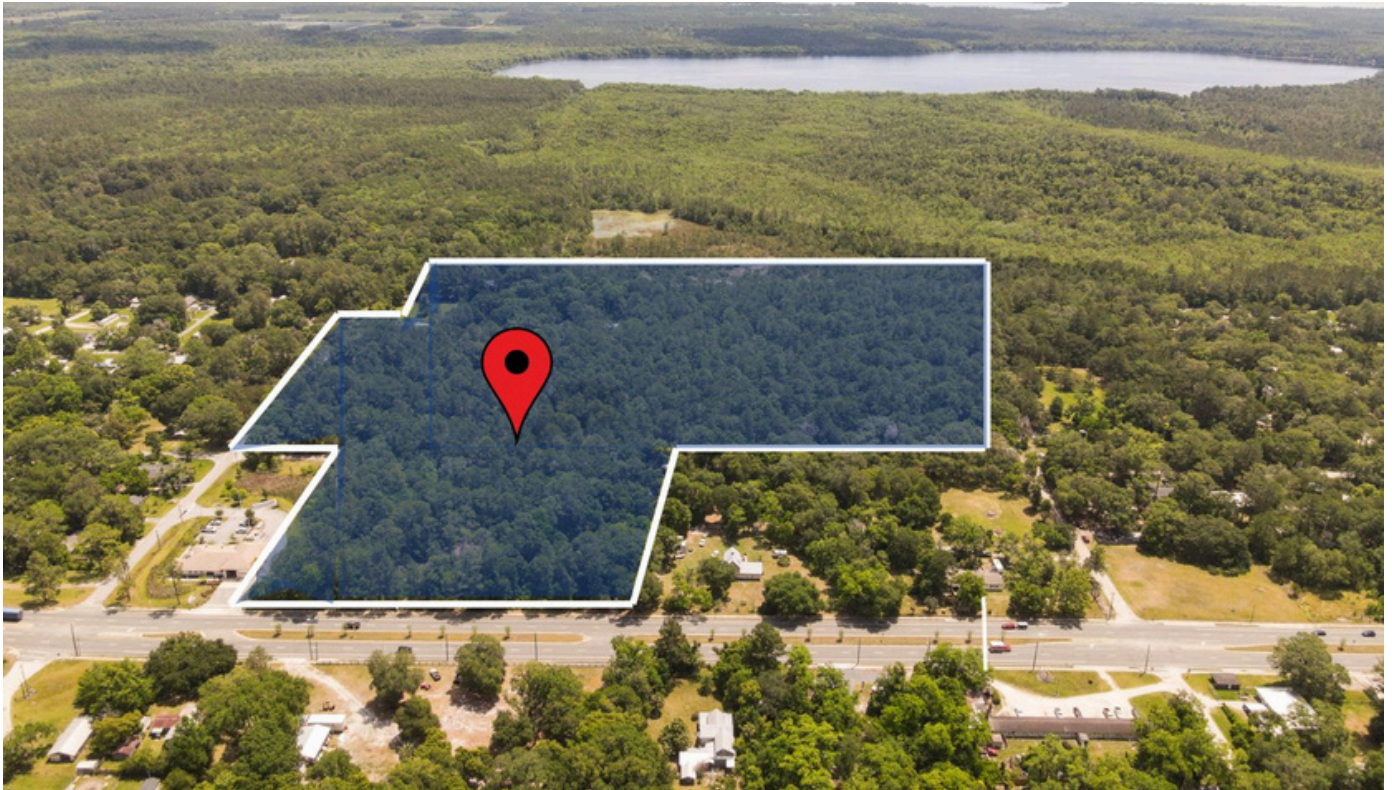




*Now*  
**AVAILABLE**

**PRICED TO SELL at just over \$10,000.00 per acre, this 19.16 acre (3.54 acre city center commercial zoning + 15.62 medium density residential) commercially zoned assemblage of land in the heart of**

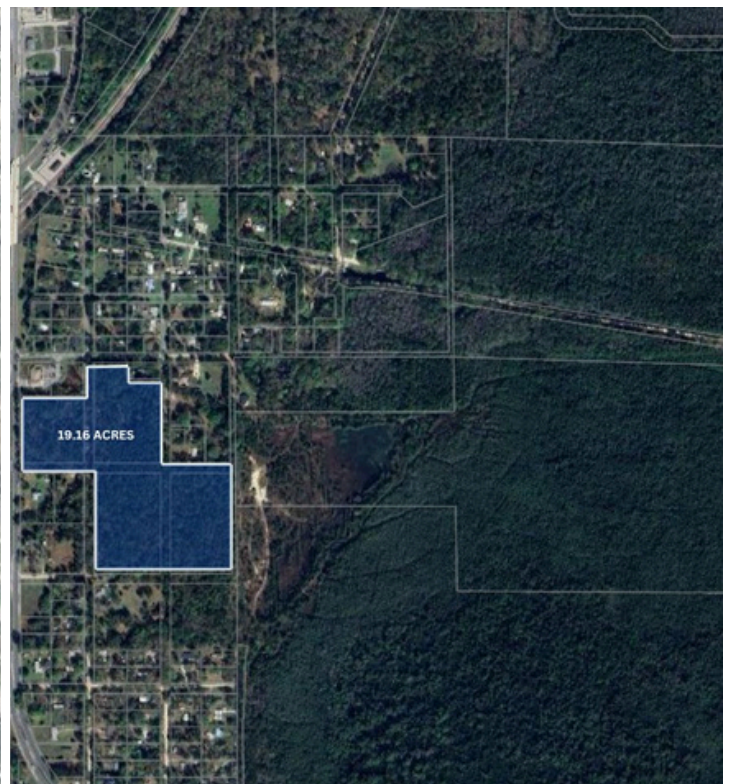






# *Now* **AVAILABLE**

This property is perfect for ground-up multifamily or commercial uses and boasts over 400 linear feet of frontage on HWY 301. Per tax records, all 19.16 acres are completely dry and fairly flat, presenting minimal barriers to entry.







# *Now* **AVAILABLE**

**This property is perfect for ground-up multifamily or commercial uses and boasts over 400 linear feet of frontage on HWY 301. Per tax records, all 19.16 acres are completely dry and fairly flat, presenting minimal barriers to entry.**







*Now*  
**AVAILABLE**

**OWNER FINANCING AVAILABLE. Parcel #'s 17242-000-000, 17243-000-000, and 17248-000-000.**



FOR MORE INFORMATION ON THIS  
LISTING:



Teresa Callen

[teresa@portalgainesville.com](mailto:teresa@portalgainesville.com)

352.871.5865



Caleb Noble

[caleb@portalgainesville.com](mailto:caleb@portalgainesville.com)

352.213.1995



Jordan Fennell

[jordan@portalgainesville.com](mailto:jordan@portalgainesville.com)

941.232.6888