



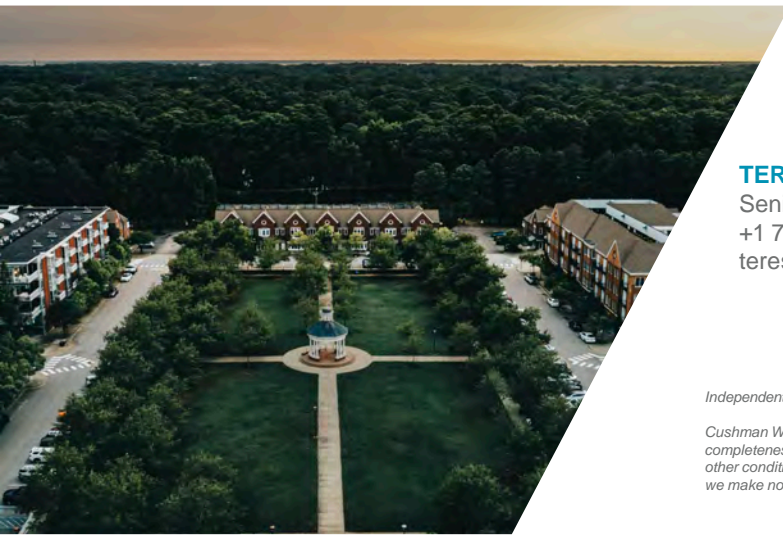
THALHIMER

TURNER BUILDING

Port Warwick
Newport News, VA 23606

PROPERTY HIGHLIGHTS

- **Availabilities:** 200-A Nat Turner – 1,458 SF
200-B Nat Turner – 1,225 SF
- Full Service Lease Rate of \$18.50/SF includes utilities and janitorial service
- A shared furnished lobby welcomes you with 2 ADA restrooms and private entry system to each suite
- Lobby and suites newly renovated with phone and IT wiring
- Exterior signage available at entrance/ front and rear of building
- Located in the award winning Port Warwick mixed-use community within an incentivized Enterprise Zone
- Walk to dining, retail and amenity based services from your office and enjoy free community based entertainment



TERESA NETTLES

Senior Vice President
+1 757 873 9268
teresa.nettles@thalhimer.com

One BayPort Way, Suite 100
Newport News, Virginia
Main +1 757 873 2900
thalhimer.com

Independently Owned and Operated / A Member of the Cushman & Wakefield Alliance

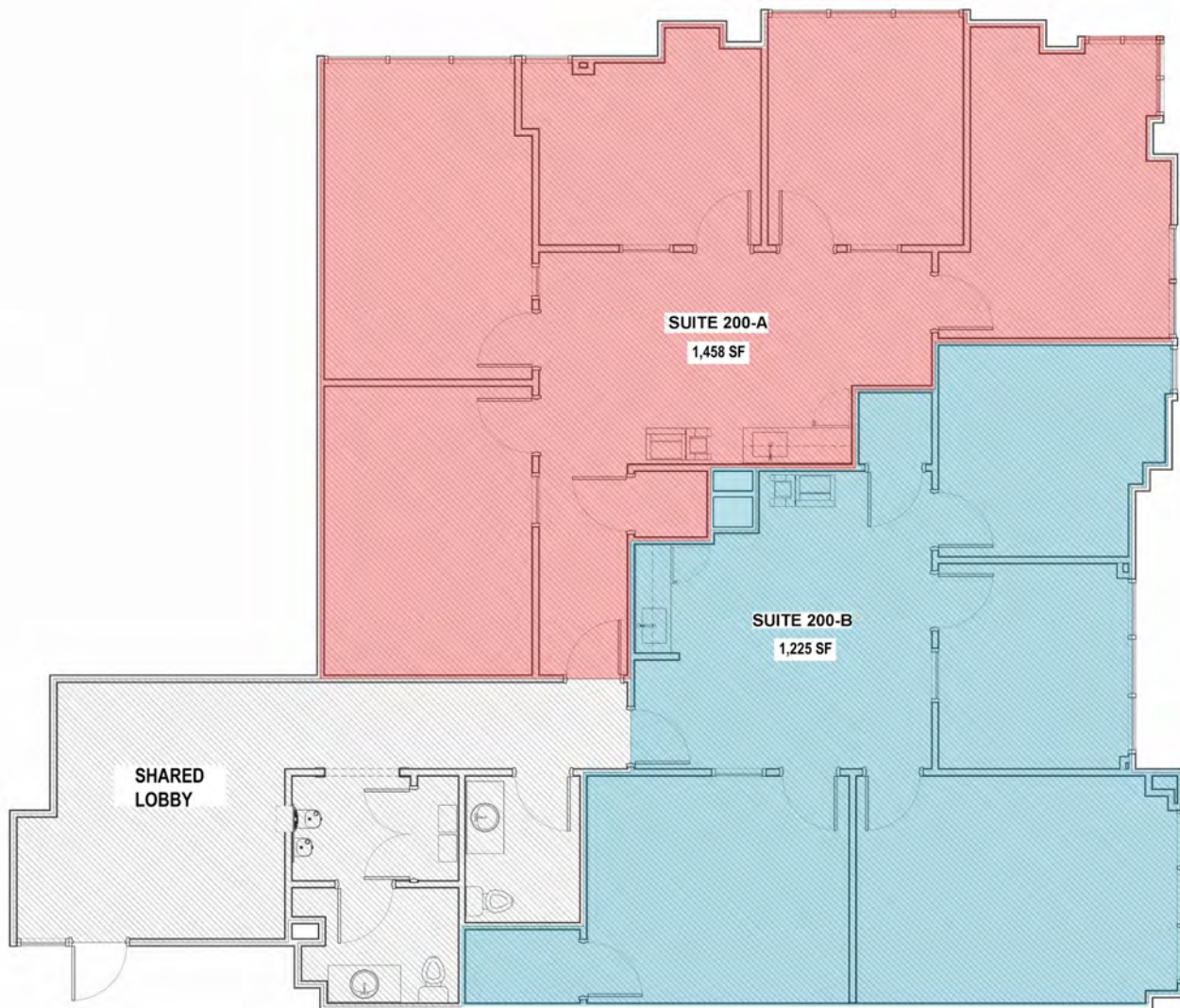
Cushman Wakefield | Thalhimer © 2024. No warranty or representation, express or implied, is made to the accuracy or completeness of the information contained herein, and same is submitted subject to errors, omissions, change of price, rental or other conditions, withdrawal without notice, and to any special listing conditions, imposed by the property owner(s). As applicable, we make no representation as to the condition of the property (or properties) in question.

TURNER BUILDING

Port Warwick, Newport News, VA 23606



LOFTIS BOULEVARD



STYRON SQUARE

TURNER BUILDING

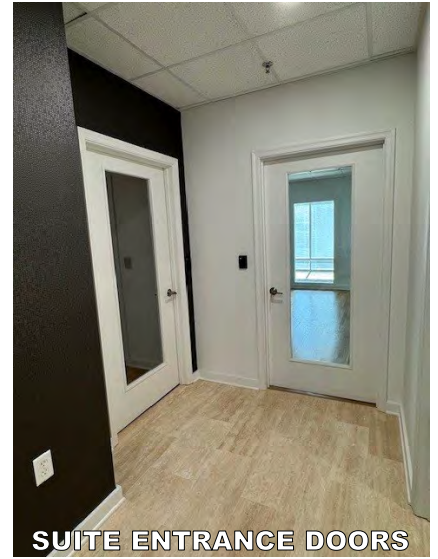
Port Warwick, Newport News, VA 23606



MAIN SHARED ENTRANCE



OUTSIDE FRONT DOOR SYSTEM



SUITE ENTRANCE DOORS



COMMON HALL & RESTROOMS



SHARED LOBBY

Common Area

TURNER BUILDING

Port Warwick, Newport News, VA 23606



200-A ENTRANCE DOOR



200-A KITCHENETTE AREA



200-A INSIDE FACING ENTRANCE



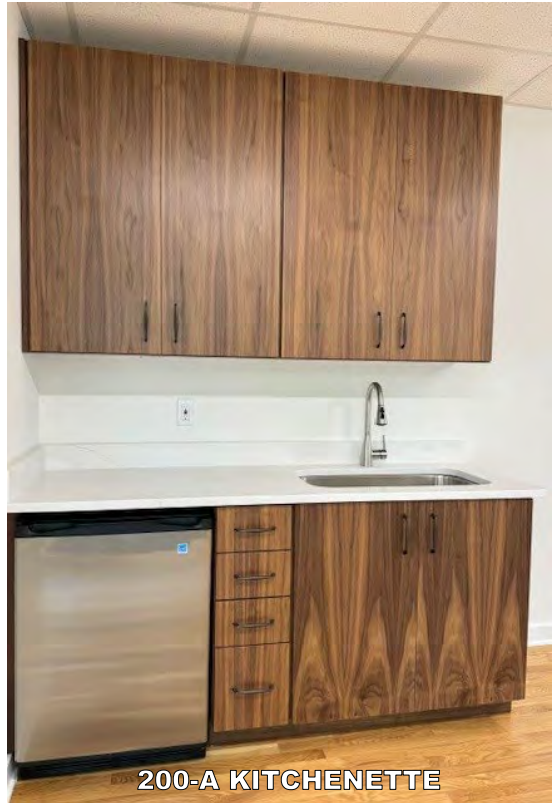
200-A OFFICE



200-A CLOSET



200-A OFFICE



200-A KITCHENETTE

Suite 200-A

TURNER BUILDING

Port Warwick, Newport News, VA 23606



200-B KITCHENETTE AREA



200-B LOBBY



200-B LOBBY



200-B OFFICE



200-B OFFICE



200-B OFFICE



200-B OFFICE



200-B CLOSET

Suite 200-B

TURNER BUILDING

Port Warwick, Newport News, VA 23606



Port Warwick is a mixed-use community located off Jefferson Avenue 1 mile from City Center in Oyster Point. Businesses housed here include retail shops such as restaurants, medical offices, Sentara ER, hair salons, investing, legal services, real estate services, and counselling, etc. Approximately ±1,500 people reside in the houses, townhomes, live-above homes, apartments and condominiums located here. All can enjoy the events held in the square to include the Art & Sculpture Festival, Summer Concert Series, Holiday Tree Lighting and Jazz on the Square.



For more information visit www.portwarwick.com



TERESA NETTLES
Senior Vice President
+1 757 873 9268
teresa.nettles@thalhimer.com

One BayPort Way, Suite 100
Newport News, Virginia
Main +1 757 873 2900
thalhimer.com

Independently Owned and Operated / A Member of the Cushman & Wakefield Alliance

Cushman Wakefield | Thalhimer © 2024. No warranty or representation, express or implied, is made to the accuracy or completeness of the information contained herein, and same is submitted subject to errors, omissions, change of price, rental or other conditions, withdrawal without notice, and to any special listing conditions, imposed by the property owner(s). As applicable, we make no representation as to the condition of the property (or properties) in question.