

RETAIL FOR LEASE

WESTWAY PLAZA

1735 KIPLING AVE, UNIT #13
TORONTO, ON



KIPLING AVE. & DIXON RD



AVAILABLE:
~4,000 SF

FOR LEASE

CAN BE DEMISED

WWW.PIVOTALCOMMERCIALREALTY.COM

PROPERTY HIGHLIGHTS

Westway Plaza is a busy retail plaza located in a high-density residential neighborhood with an excellent mix of retailers. Currently, we have a ~**4,000 SF** endcap retail unit available For Lease which is being currently occupied by the Beer Store. This unit can be divisible.

The subject site is located at the busy intersection of Kipling Ave. & Dixon Rd., in Toronto, ON.

This high traffic retail plaza is anchored with Shoppers Drug Mart, McDonald's, and Dollarama and is surrounded by residential homes, apartments and residential condos.

The retail plaza has an excellent mix of retailers that include a bank, a pharmacy, a dollar store, a nail shop and various QSR's and many other retailers.

Partial Tenant Roster Includes:

Shoppers Drug Mart, McDonald's, Subway, Lazeez Shawarma, Pizza Pizza, Cash Money, Cleaners, TD Bank

KEY HIGHLIGHT

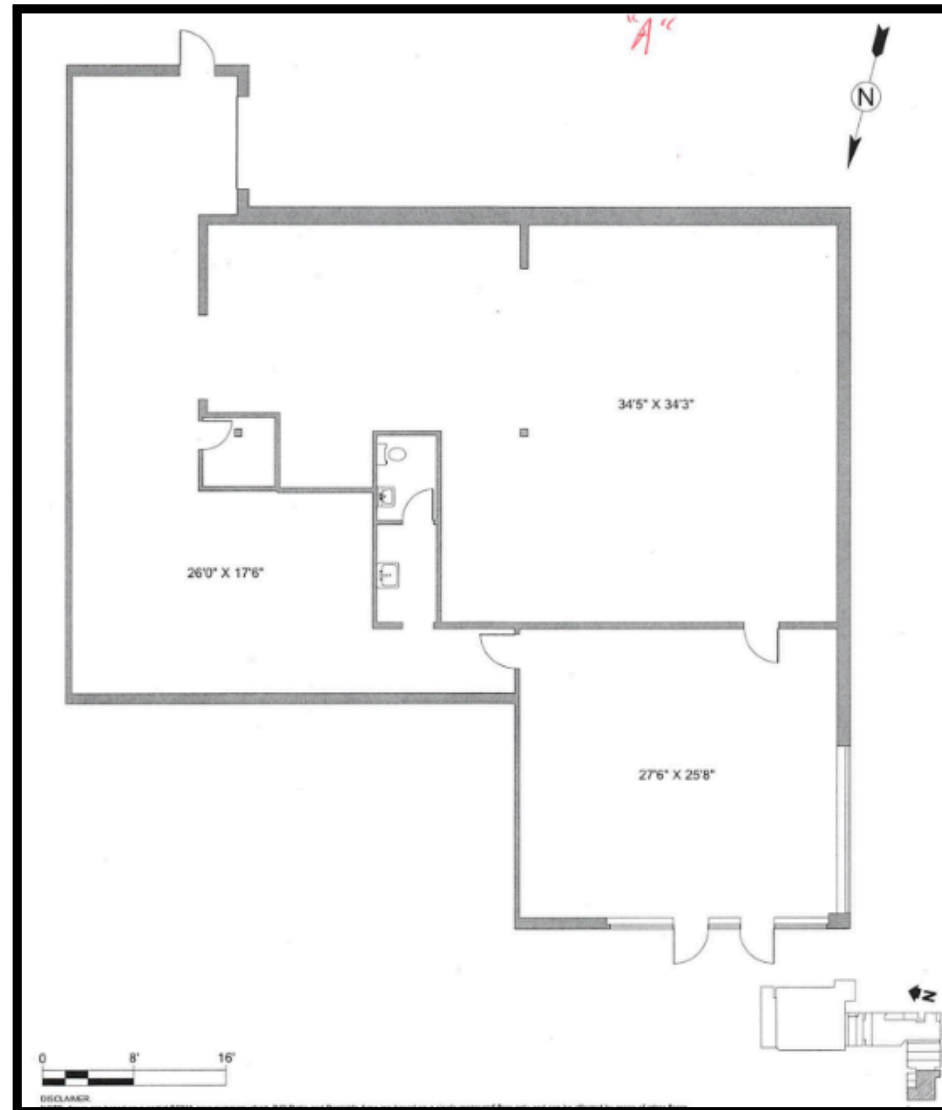
- Minutes away from Westway Junior Public School
- Minutes away from Kipling Collegiate Institute
- Minutes away from Dixon Grove Junior Middle School
- Minutes away from Highway 401

RETAIL UNIT(S) FOR LEASE:

- **Option 1:** 4,000 SF (Currently the Beer Store)
- **Option 2:** 1,500 SF (Currently the Beer Store)
- **Available:** 6 to 9 months
- **Net Rent:** Call Broker
- **T.M.I.:** \$18.00 per SF/ Annum (2025)



FLOOR PLAN: 4,000 SF

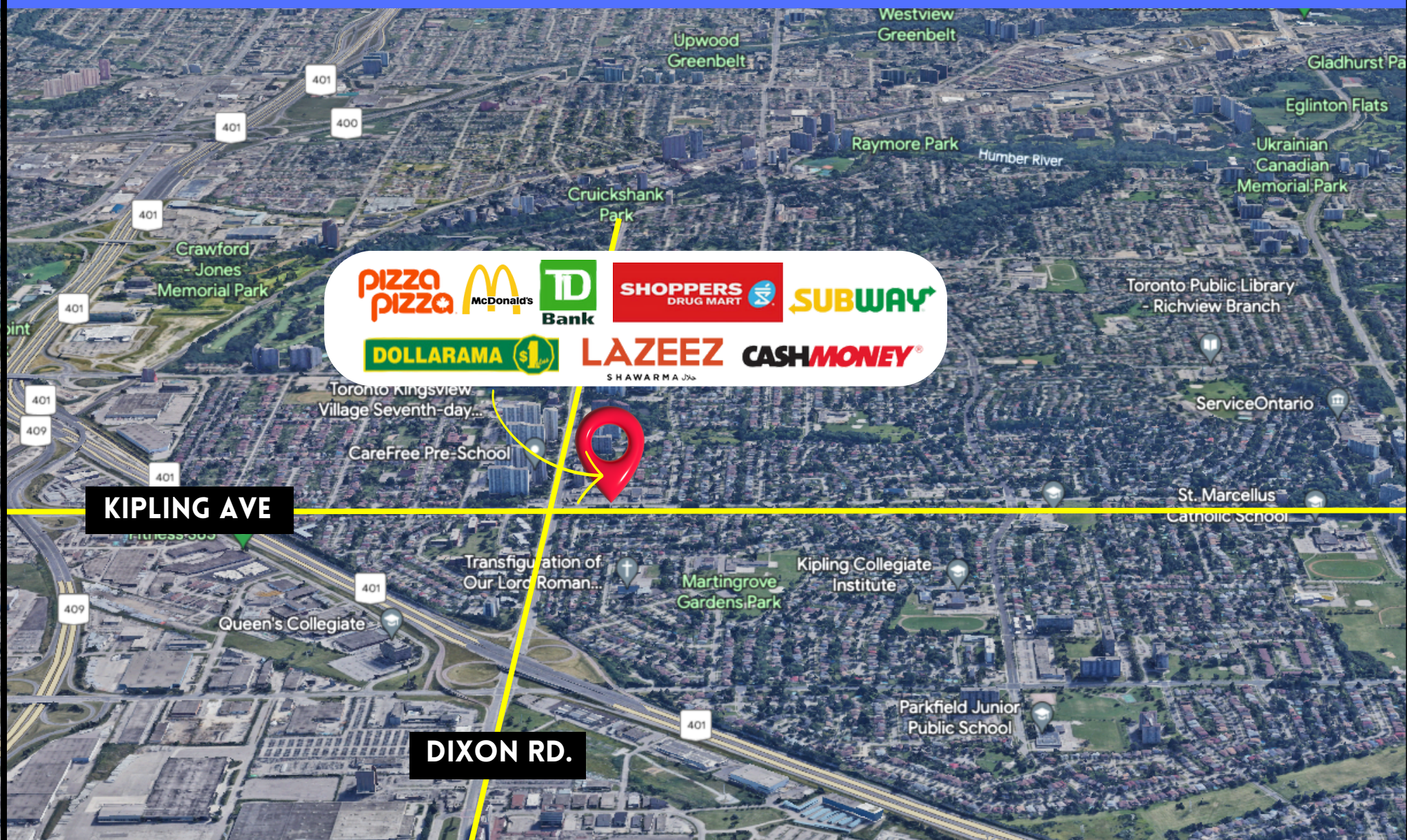


SITE PLAN



**AVAILABLE:
4,000 SF**

SITE MAP



RETAIL FOR LEASE

WESTWAY PLAZA

1735 KIPLING AVE
TORONTO, ON



KIPLING AVE. & DIXON RD



AVAILABLE:
4,000 SF

FOR LEASE

SHAWN ABRAMOVITZ, BA
CEO & BROKER OF RECORD
416.900.3878 EXT:102
SHAWN@PIVOTALCOMMERCIALREALTY.COM

WWW.PIVOTALCOMMERCIALREALTY.COM