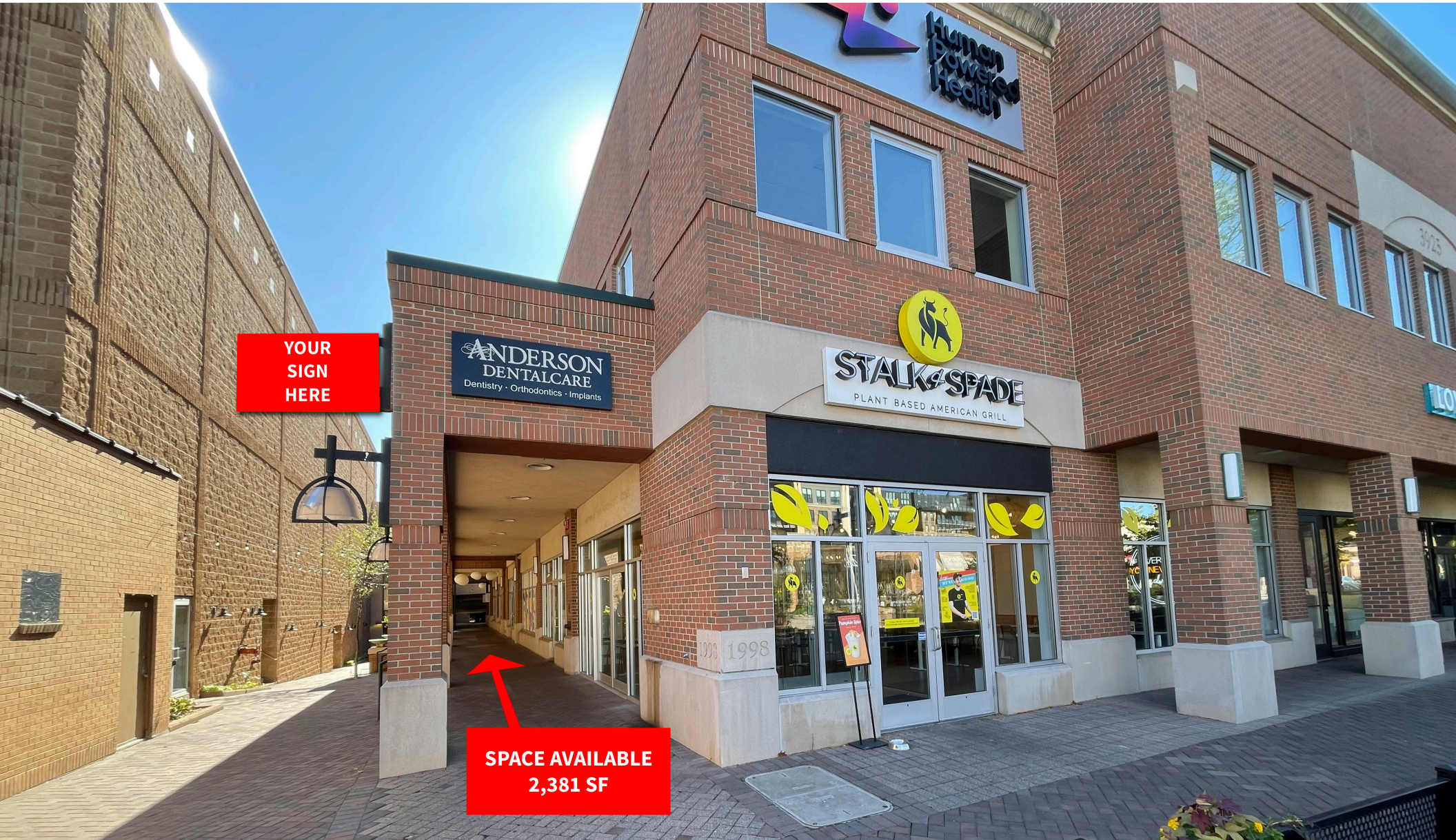


50th St Plaza

3925 W 50th St, Edina, MN 55424



Jeremy Grittner
jeremy.grittner@jll.com
612 217 6722

Zac Hoang
zac.hoang@jll.com
612 217 5156



Property highlights

- High daytime population in the affluent suburb of Edina
- Located in the epicenter of the iconic 50th & France retail district
- 415 free parking spaces directly behind the property, with over 1,000 additional free parking spaces nearby
- Nearby tenants include Lunds & Byerly's, Crisp & Green, Evereve, Walgreens, and more

Site information

Location: 3925 W 50th St, Edina, MN 55424

Description: Suite 104: 2,381 SF

Lower Level, B12: 1,406 SF

Lower Level, B14: 1,462 SF

Expenses

CAM: \$5.11 (1st floor retail)
\$9.84 (2nd floor office)

RE Taxes: \$12.03

Traffic counts

France Ave: 10,000 vpd

50th St: 11,400 vpd

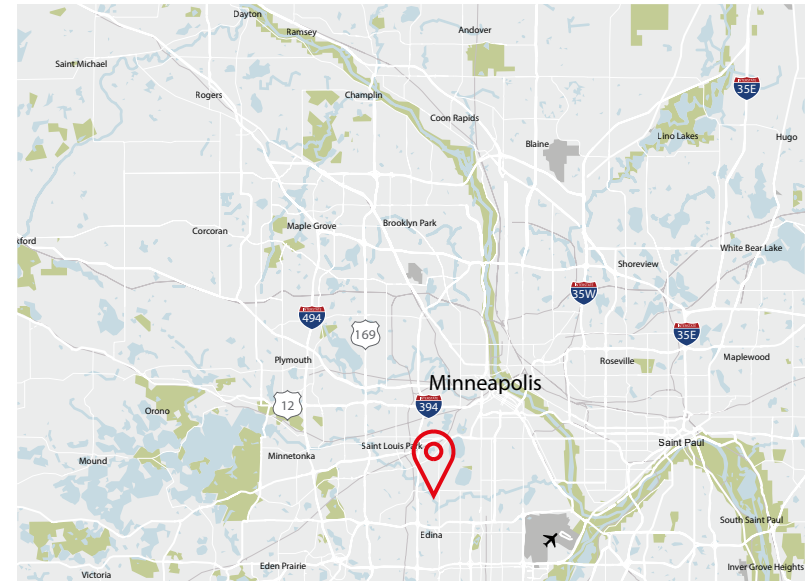
Demographics

Radius	1 Mile	3 Miles	5 Miles
Population	18,740	142,003	397,596
Median HH Income	\$163,709	\$106,996	\$85,910
Average HH Income	\$234,546	\$160,709	\$127,229

* Source: 2022 Esri Forecasts based on The Census 2000 and 2010 data converted by Esri into 2020 geography

Availability

For Lease



Tenants



Aerial



Contact us

Jeremy Grittner

jeremy.grittner@jll.com

612 217 6722

Zac Hoang

zac.hoang@jll.com

612 217 5156



© 2022 Jones Lang LaSalle IP, Inc. All rights reserved. The information contained in this document is proprietary to JLL and shall be used solely for the purposes of evaluating this proposal. All such documentation and information remains the property of JLL and shall be kept confidential. Reproduction of any part of this document is authorized only to the extent necessary for its evaluation. It is not to be shown to any third party without the prior written authorization of JLL. All information contained herein is from sources deemed reliable; however, no representation or warranty is made as to the accuracy thereof.

