

# FOR LEASE

5402 Hornaday Rd, Greensboro, NC 27407

LEASE RATE: \$24 SF/YR (NN)



## Retail | Suite 102 | 4,000 SF

- New TopGolf located on the same interchange
- Building located beside Duluth Trading Company
- Men's Wearhouse Co-Tenant
- I-40 visibility
- Convenient access to Interstate 40 via the Guilford College Road exit
- Signage on (3) sides including I-40

### 5 MILES INFORMATION



**126,675**

TOTAL POPULATION



**53,819**

TOTAL HOUSEHOLDS



**\$69,605**

AVERAGE HH INCOME

No Warranty Or Representation, Express Or Implied, Is Made As To The Accuracy Of The Information Contained Herein, And The Same Is Submitted Subject To Errors, Omissions, Change Of Price, Rental Or Other Conditions, Prior Sale, Lease Or Financing, Or Withdrawal Without Notice, And Of Any Special Listing Conditions Imposed By Our Principals No Warranties Or Representations Are Made As To The Condition Of The Property Or Any Hazards Contained Therein Are Any To Be Implied.



Nancy Cox  
336 358 3223  
ncox@naipt.com

Robbie Perkins, CCIM, SIOR  
336 358 3219  
rperkins@naipt.com

Tammy Dixon, CCIM, SIOR, CMB  
336 358 3239  
tdixon@naipt.com

Brendan Richardson  
336 398 3267  
brichardson@naipt.com





Map data ©2024 Google Imagery ©2024 Airbus, CNES / Airbus, Maxar Technologies, U.S. Geological Survey, USDA/FPAC/GEO

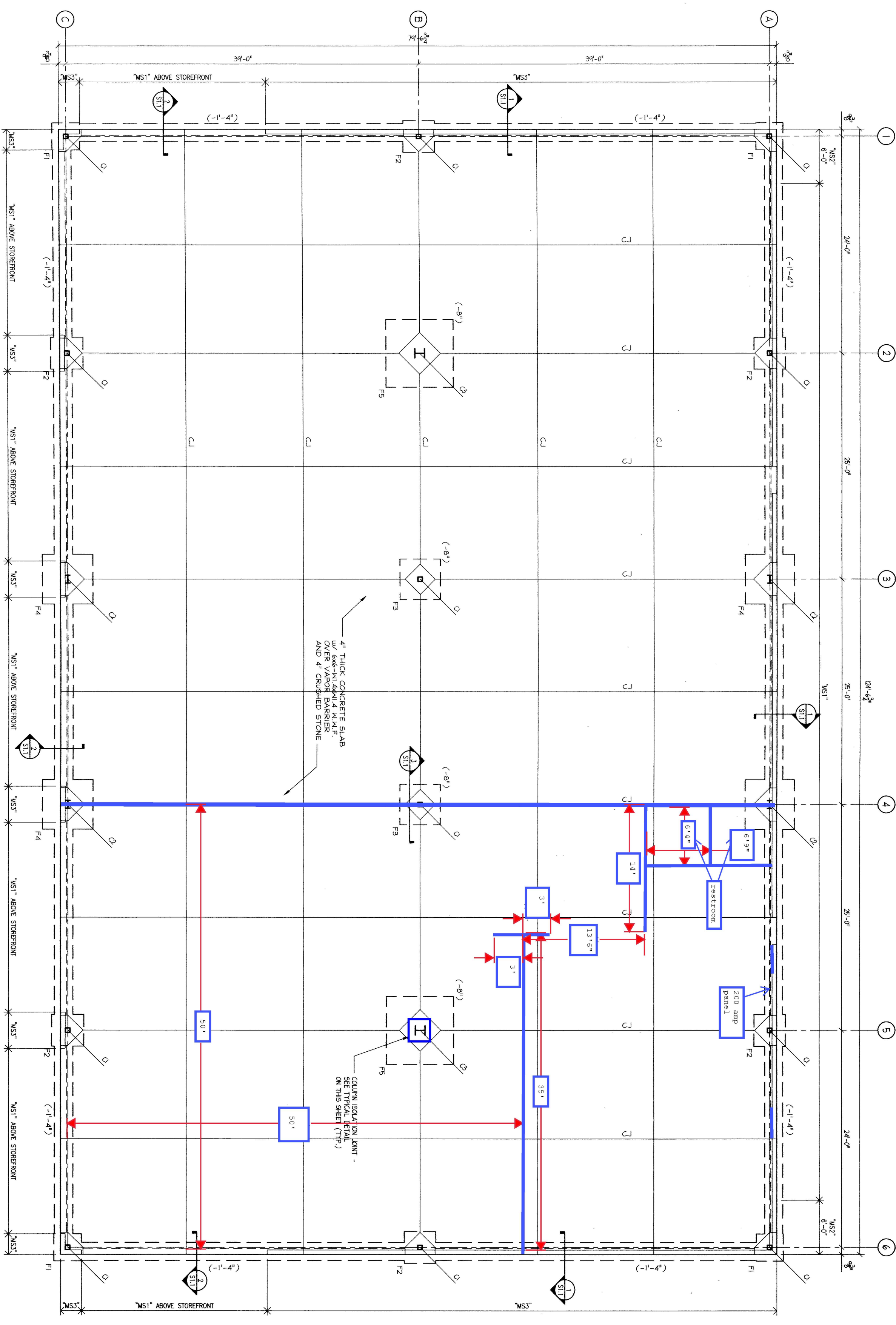
**Nancy Cox**  
336 358 3223  
ncox@naipt.com

**Robbie Perkins, CCIM, SIOR**  
336 358 3219  
rperkins@naipt.com

**Tammy Dixon, CCIM, SIOR, CMB**  
336 358 3239  
tdixon@naipt.com

**Brendan Richardson**  
336 398 3267  
brichardson@naipt.com



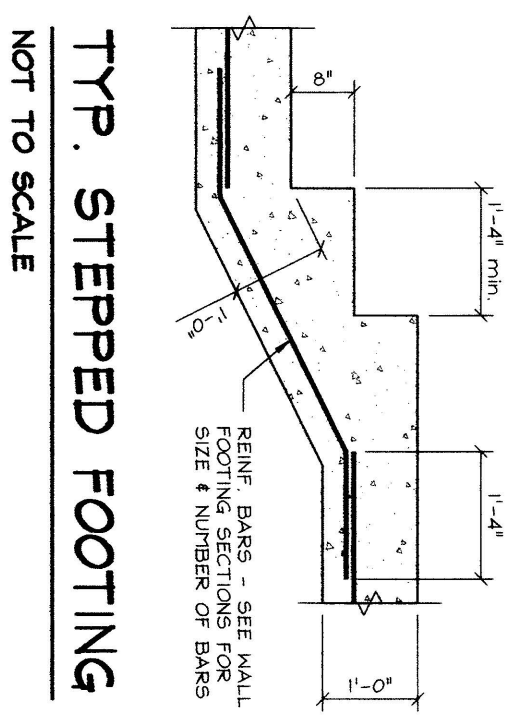


**FLOOR SLAB & FOUNDATION PLAN**  
1/8" = 1'-0"

1. ( ) INDICATES TOP OF FOOTING ELEVATION IN RELATION TO TOP OF FLOOR SLAB.
2. STEP OFFERS WALL FOOTINGS AS NECESSARY TO MAINTAIN MINIMUM 1'-0" COVER. SEE TYPICAL DETAIL ON THIS SHEET.
3. C1 INDICATES CONSTRUCTION OR CONTROL JOINT. SEE TYPICAL DETAILS ON THIS SHEET.

**STUD SCHEDULE**

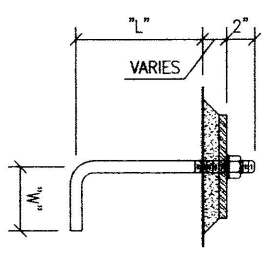
MARK	SIZE	SPACING
MS1	6X20 O.A.	18" O.C.
MS2	6X20 O.A.	17" O.C.
MS3	6X18 O.A.	18" O.C.



**TYP. STEPPED FOOTING**  
NOT TO SCALE

**EXPANSION BOLT SCHEDULE**

MARK	BOLT Ø	BASE MATERIAL	MIN. T	MIN. S	MIN. EMBED
E31	3/8"	3000 PSI CONCRETE	1250 BS	1170 BS	2 1/2"



**TYP. ANCHOR ROD**

SIZE	T	S	E
3/4"	10"	7"	4"
1"	1'-0"	7"	4"

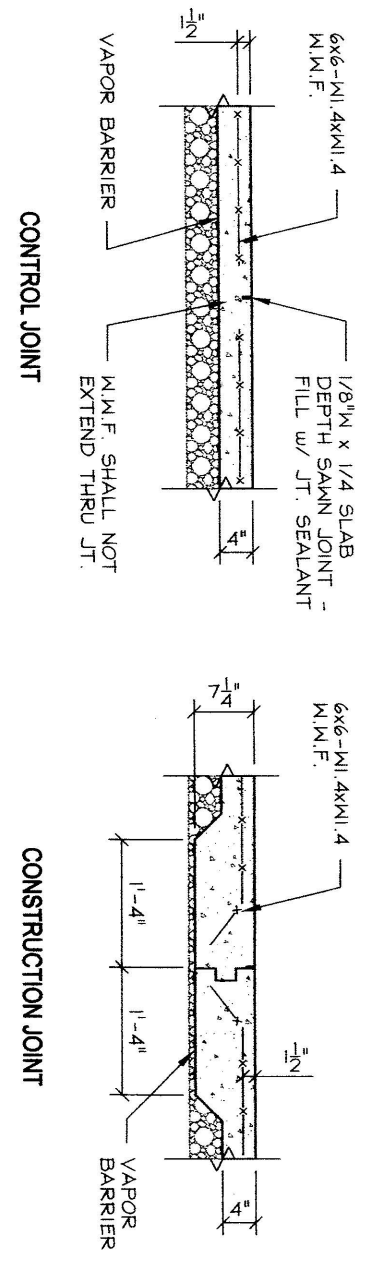
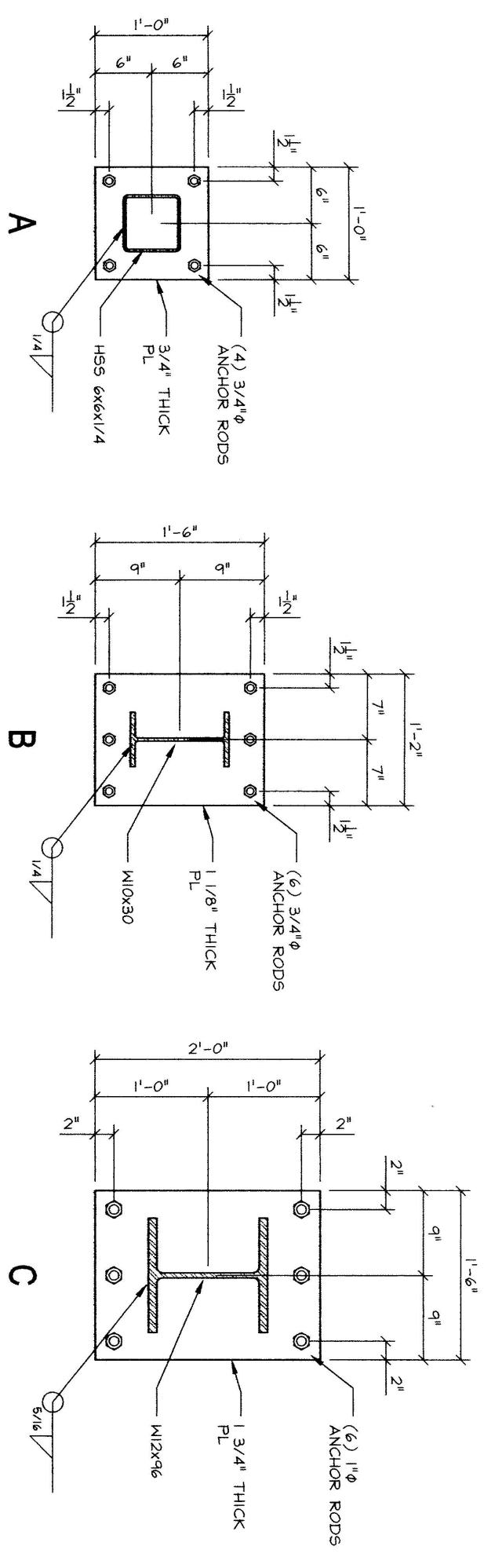
**COLUMN SCHEDULE**

MARK	SIZE	BASE PLATE	ANCHOR RODS
C1	HSS 6x6/1/4	3/4"x12"x2" X	(4) 3/4"
C2	W10x30	1 1/2"x14"x18" X	(8) 3/4"
C3	W10x30	1 3/4"x18"x24" X	(8) 1"

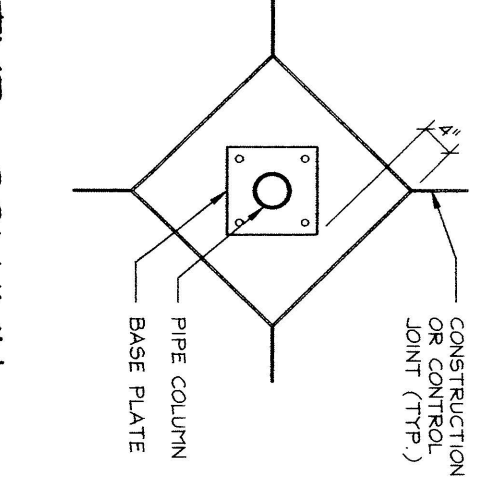
**FOOTING SCHEDULE**

MARK	SIZE	REINFORCING
F1	3'-0"x3'-0"x1'-0"	(6) #4 BARS EACH WAY BOTTOM
F2	3'-6"x3'-6"x1'-0"	(6) #4 BARS EACH WAY BOTTOM
F3	4'-6"x4'-6"x1'-0"	(6) #4 BARS EACH WAY BOTTOM
F4	5'-0"x5'-0"x1'-2"	(6) #4 BARS EACH WAY BOTTOM
F5	7'-6"x7'-6"x1'-8"	(6) #4 BARS EACH WAY BOTTOM

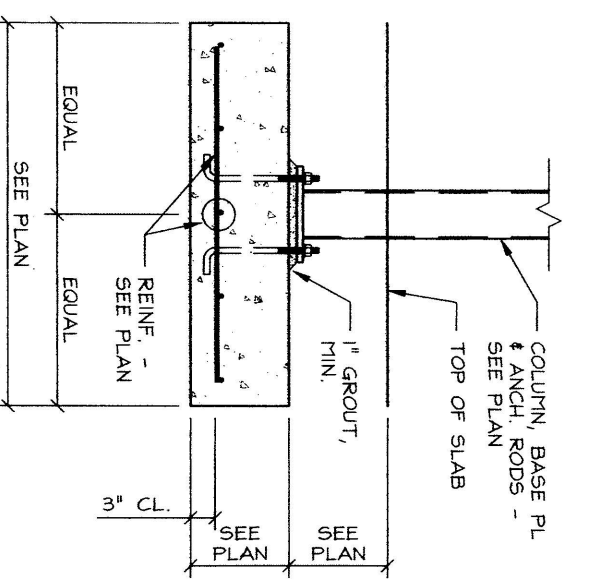
**TYP. COLUMN BASE PLATES**  
3/4" = 1'-0"



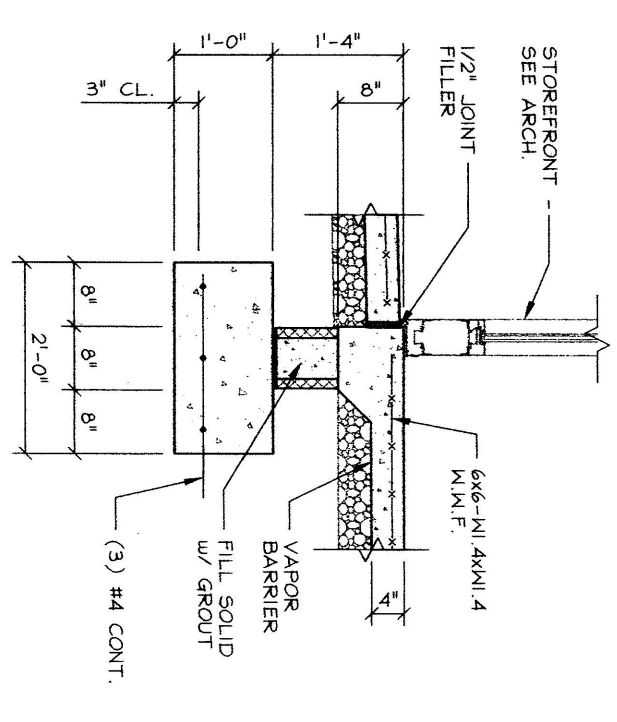
**TYP. SLAB JOINT DETAILS**  
NOT TO SCALE



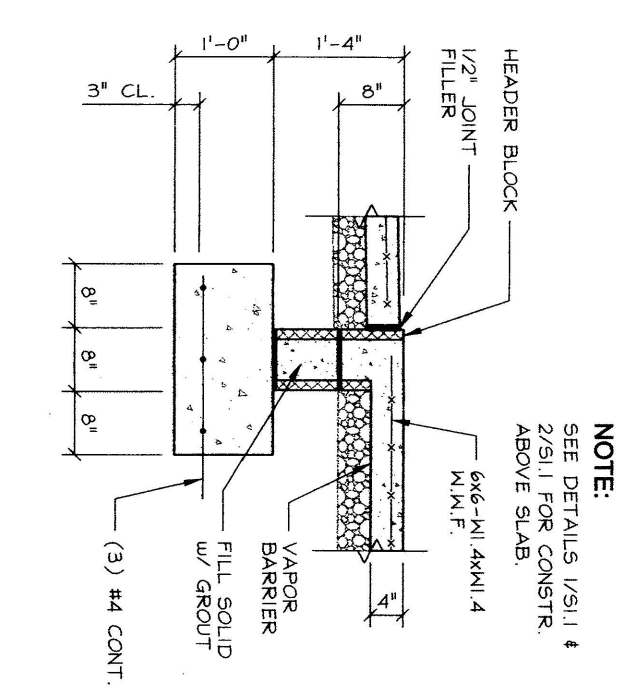
**TYP. COLUMN ISOLATION JOINT**  
NOT TO SCALE



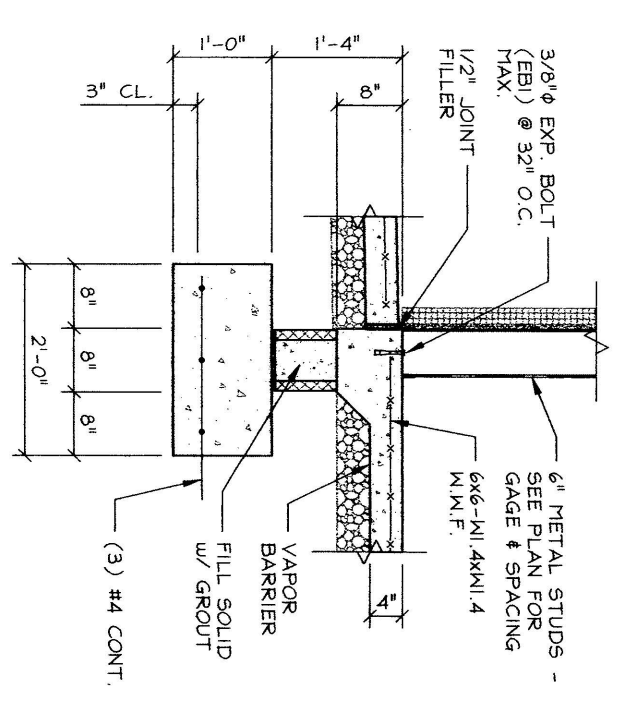
**SECTION 3**  
1/2" = 1'-0"



**SECTION 2**  
1/2" = 1'-0"



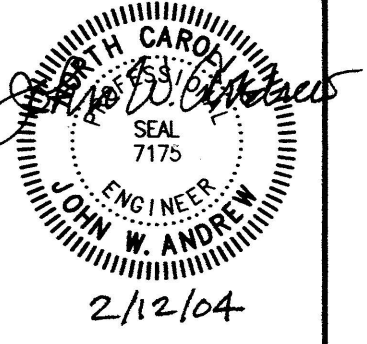
**SECTION 1A**  
1/2" = 1'-0"



**SECTION 1**  
1/2" = 1'-0"

**Retail Building for Men's Wearhouse**  
Hornaday Road  
Greensboro, North Carolina

**Andrew Engineering, Inc.**  
1401 Sunset Drive  
Suite 100  
Greensboro, NC 27408  
Phone: (336) 378-1053 Fax: (336) 378-0091 office@andreweng.com



**MERCER + TYE ARCHITECTURE INC**  
1015 HUTTON LANE, SUITE 106  
HIGH POINT NORTH CAROLINA 27262  
TELEPHONE: 336/885-1200 FAX: 336/885-1201

**S1.1**  
OF SHEETS

DATE: 12/7/03  
PROJ. NO: 03402  
SCALE: Mixed  
DRAWN BY: MBS  
REVISION:  
© 2003 Andrew Engineering, Inc.  
Floor Slab & Foundation  
Details, Schedules