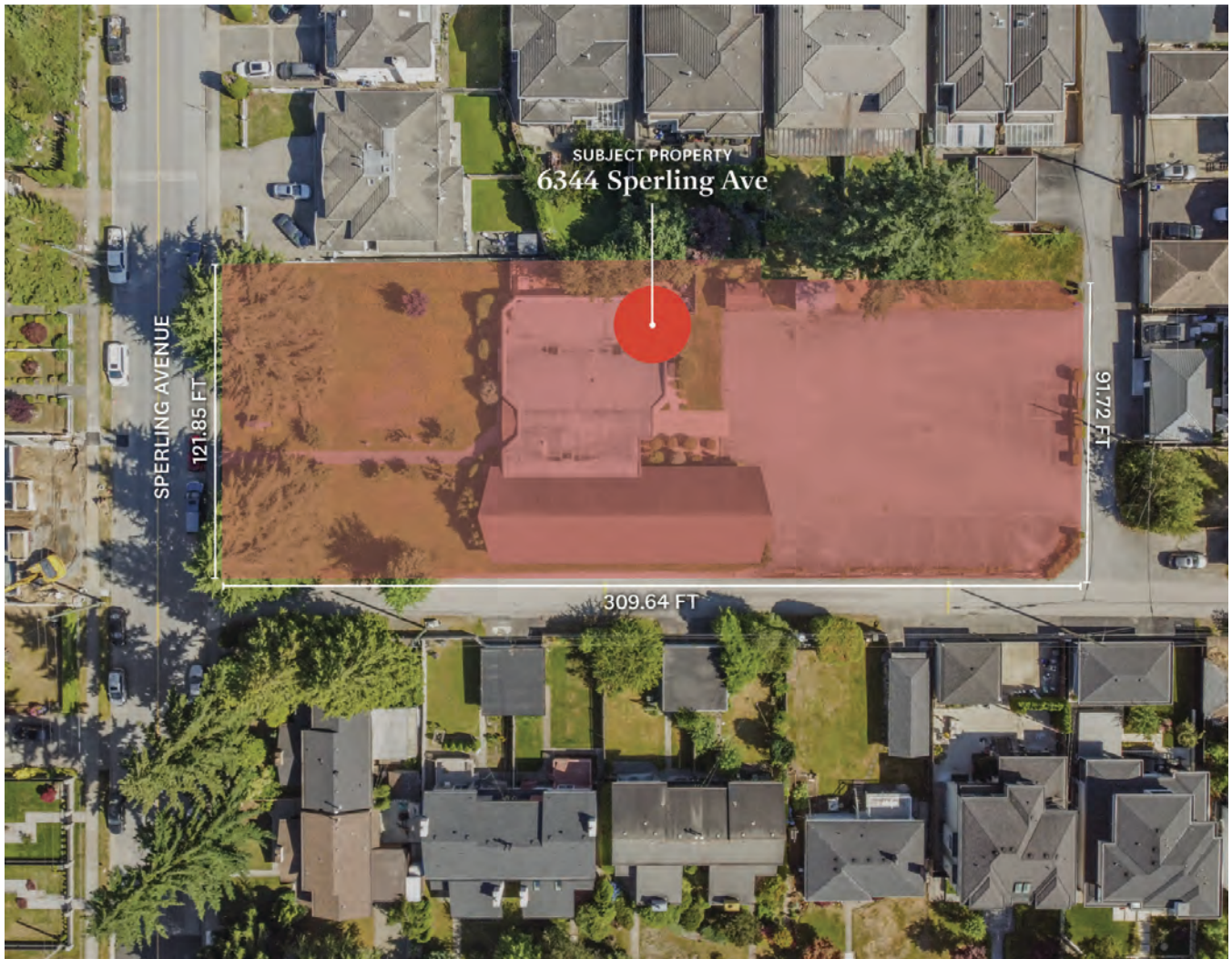


FOR SALE

6344 Sperling Avenue, Burnaby, BC

DEVELOPMENT LAND FOR SALE



Jason Lai
PERSONAL REAL ESTATE CORPORATION

778.996.1788

Amber Wang
PERSONAL REAL ESTATE CORPORATION

604.723.1071

rennie

the opportunity

OVERVIEW

Rennie & Associates Realty is pleased to present an exceptional opportunity to acquire a premier redevelopment site in Burnaby's prestigious Buckingham Heights neighborhood. The site comprises a single rectangular shaped parcel totaling over 37,000 square feet, and currently houses the Emmaus Lutheran Church, constructed circa 1966.

Located on the east side of Sperling Avenue, between Stanley Street and Burns Street, the site features over 121 feet of frontage along Sperling Avenue with a depth of over 309 feet. The site offers ease of accessibility to transit, parks, and surrounding community amenities; presenting both immediate functionality and significant long-term redevelopment potential.



site profile



SUBJECT PROPERTY

6344 Sperling Avenue, Burnaby, British Columbia

PROPERTY DESCRIPTION

Located on the east side of Sperling Avenue, between Stanley Street and Burns Street

LOT SIZE (EST.)

37,666 sq.ft

LOT DIMENSIONS (EST.)

Sperling Avenue: 121.85 feet
Depth: 309.64 feet

PROPERTY TAXES (2024)

\$615.50

BC ASSESSMENT VALUE (2025)

\$3,047,500

ZONING

P1 – Neighborhood Institutional District

LEGAL DESCRIPTION

PID: 002-953-412
LOT 12 DISTRICT LOT 92 GROUP 1 NEW
WESTMINSTER DISTRICT PLAN 23891

LAND USE DESIGNATION

Current OCP Designation:
Single and Two Family Urban Area

Potential Land-Use:

Burnaby 2050 OCP – Phase 4 (To Be Confirmed)
Small-Scale Multi-Unit Housing / Low-Rise Apartment 1

ASKING PRICE

Contact listing agent



land use

BURNABY 2050

Official Community Plan Draft



Small-Scale Multi-Unit Housing	Residential multiplex up to 4 units and up to 6 units in locations 400 metres from a frequent transit bus stop
Townhouse	Residential (4 storeys)
Low-Rise Apartment 1	Residential (4 storeys)
Low-Rise Apartment 2	Residential (6 storeys, or 8 storeys for sites within 800 metres of a SkyTrain station)
Mid-Rise Apartment 1	Residential (12 storeys)
Mid-Rise Apartment 2	Residential (20 storeys)
High-Rise Apartment 1	Residential (30 storeys)
High-Rise Apartment 2	Residential (40 storeys)
High-Rise Apartment 3	Residential (50+ storeys)



area map



WALK SCORE



15/100 Car-Dependent

Almost all errands require a car.



48/100 Some Transit

A few nearby public transportation options.



51/100 Bikeable

Some bike infrastructure.

NEARBY AMENITIES

1. Deer Lake Park
2. Brantford Elementary School
3. Buckingham Elementary School
4. Morley Elementary School
5. Metrotown
6. Save-On-Foods
7. Shoppers Drug Mart
8. BMO Bank
9. Royal Oak SkyTrain Station

site area



Jason Lai

PERSONAL REAL ESTATE CORPORATION

778.996.1788

jlai@rennie.com

rennie.com/jasonlai

Amber Wang

PERSONAL REAL ESTATE CORPORATION

604.723.1071

awang@rennie.com

rennie.com/amberwang

**rennie & associates
realty ltd.**

110-1650 West 1st Ave
Vancouver, BC V6J 1G1

604.682.2088

rennie.com

INDEPENDENT ADVISORS OF RENNIE AND ASSOCIATES REALTY LTD. THIS COMMUNICATION IS NOT INTENDED TO CAUSE OR INDUCE A BREACH OF AN EXISTING AGREEMENT(S). E.& O.E

rennie