

201 KRIEBEL AVENUE

LANSDALE, PA 19446

**UNDER NEW OWNERSHIP &
RENOVATIONS ARE UNDERWAY!**



AVAILABLE FOR LEASE

REPRESENTED BY
THE FLYNN COMPANY

KEVIN FLYNN JR
KFLYNNJR@FLYNNCO.COM
215-561-6565 X 121

MICHAEL BORSKI JR., SIOR
MBORSKIJR@FLYNNCO.COM
215-561-6565 X 119

MARK PAWLOWSKI
MPAWLOWSKI@FLYNNCO.COM
215-561-6565 X 146

The
Flynn
Company

PROPERTY DETAILS:

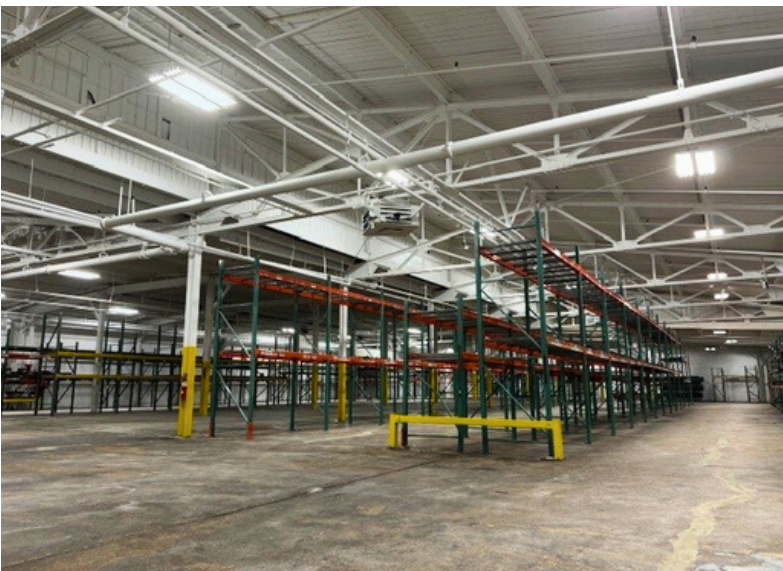
Lease: \$9.95 SF NNN

- **Building Size -** 35,500 SF
- **Lot Size -** 1.32 acres
- **Available -** 35,500 SF
- **Office Space -** Approximately 3,000 SF
- **Ceiling Height -** 14'-15'
- **Loading -** Three (3) loading docks
- **Power -** 480V, 1,000 AMPS, 3 phase
- **Fire Protection -** 100% Sprinklered

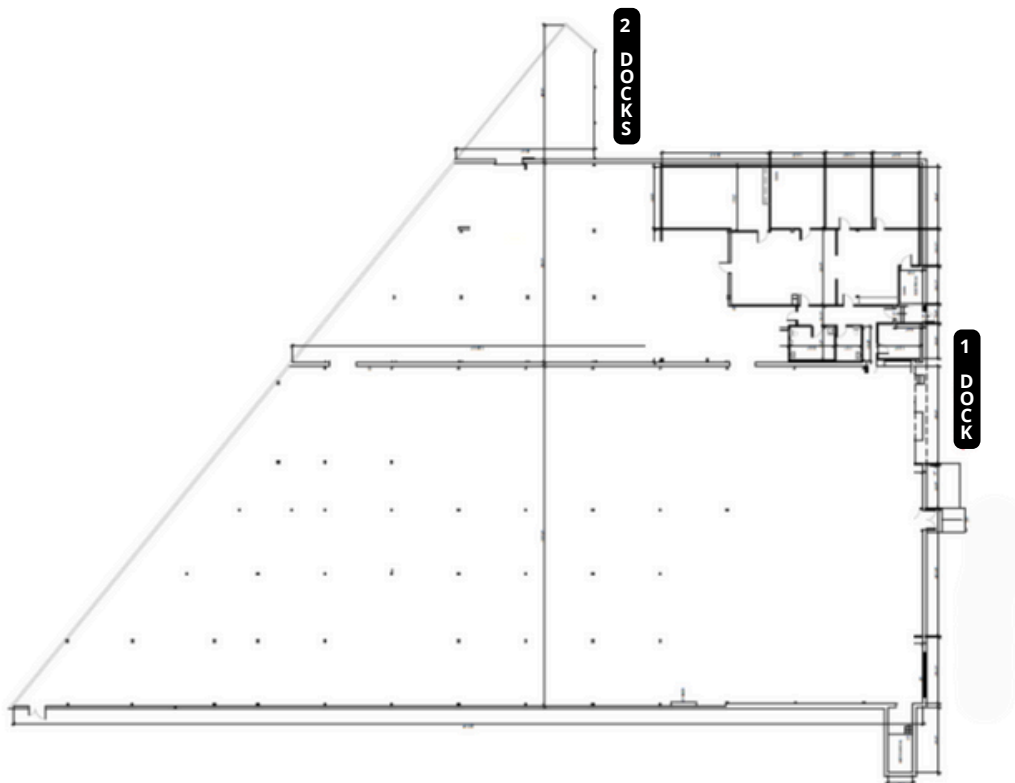
THE FLYNN COMPANY

WWW.FLYNNCO.COM | 1621 WOOD STREET, PHILADELPHIA, PA 19103 | 215.561.6565

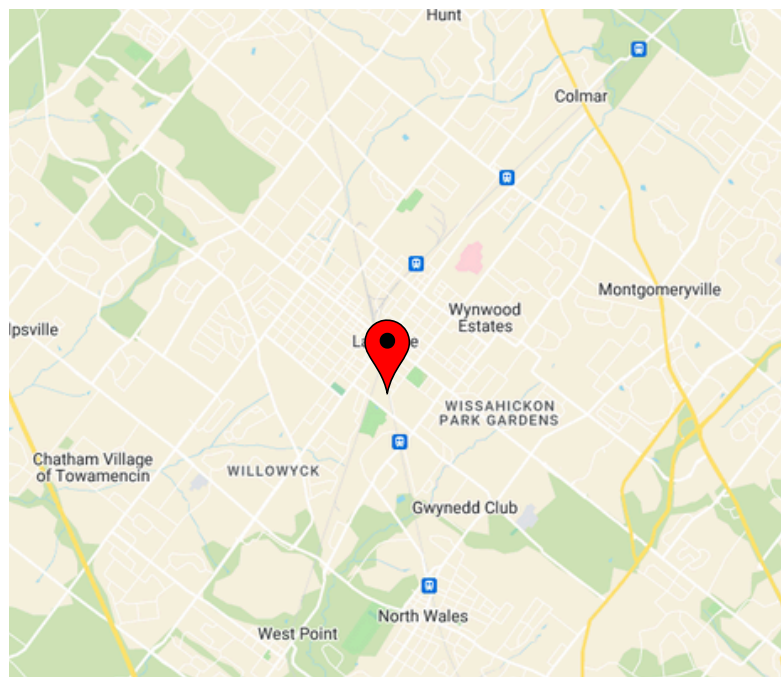
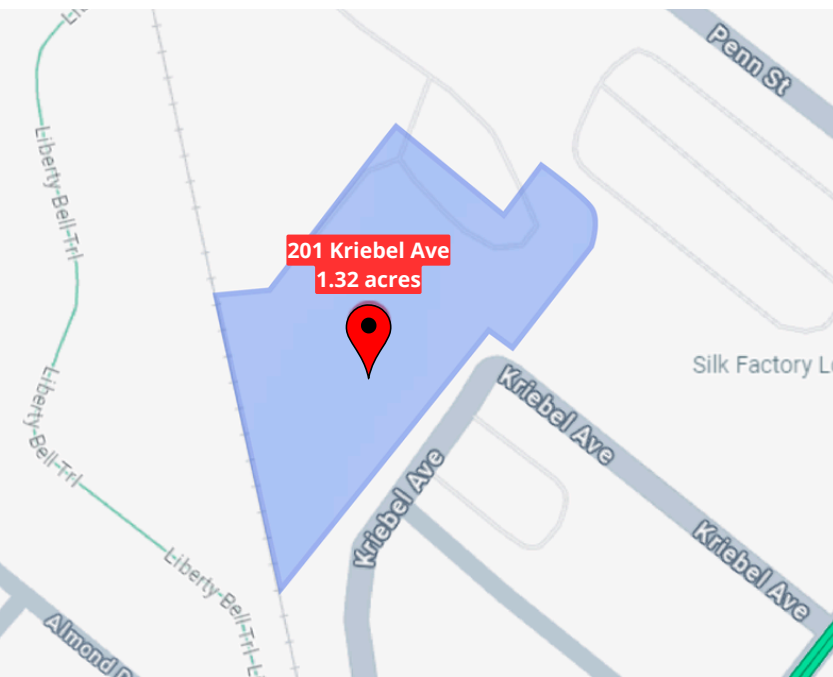
PROPERTY PHOTOS



FLOOR PLAN



LOCATION



**For More Information
Please Contact:**

KEVIN FLYNN JR
KFLYNNJR@FLYNNCO.COM
215-561-6565 X 121

MICHAEL BORSKI JR., SIOR
MBORSKIJR@FLYNNCO.COM
215-561-6565 X 119

MARK PAWLOWSKI
MPAWLOWSKI@FLYNNCO.COM
215-561-6565 X 146