



For Lease

Lease Rate:

\$2,250

Per Month + Utilities

Contact:

Brandon Huntsman

Executive Vice President

+1 801 830 9232

brandon.huntsman@colliers.com

Josh Martin

Executive Vice President

+1 801 830 2004

josh.martin@colliers.com

Colliers

2100 Pleasant Grove Blvd., Suite 200

Pleasant Grove, UT 84062

Main: +1 801 947 8300

colliers.com

Flex / Retail Warehouse Units

1300 West 635 South
Orem, Utah 84058

Property Information

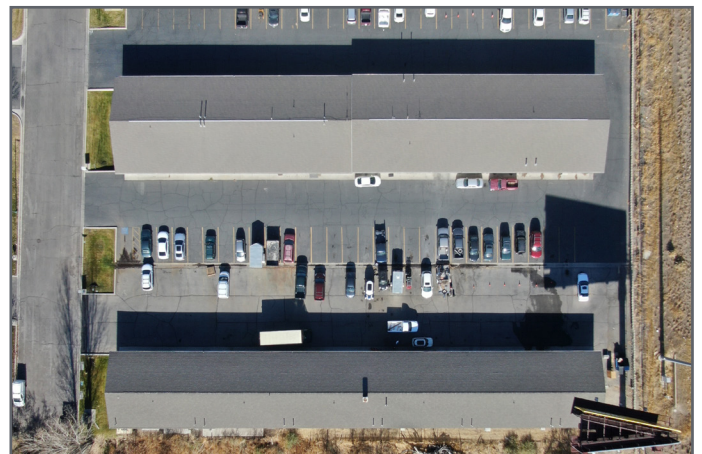
North Building:

- Unit 1292 - 1,500 SF
- 30' x 50'
- 10' x 12' GL Door
- Clear Height: 11.5' to 14'
- 208 V | 200 A | 3 phase power
- Ideal location for Flex | Retail users

Lease Rate: \$2,250 | Month + Utilities

Available: 1,500 SF

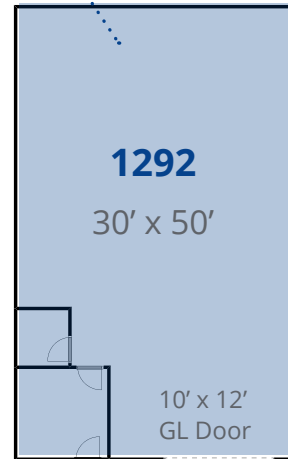
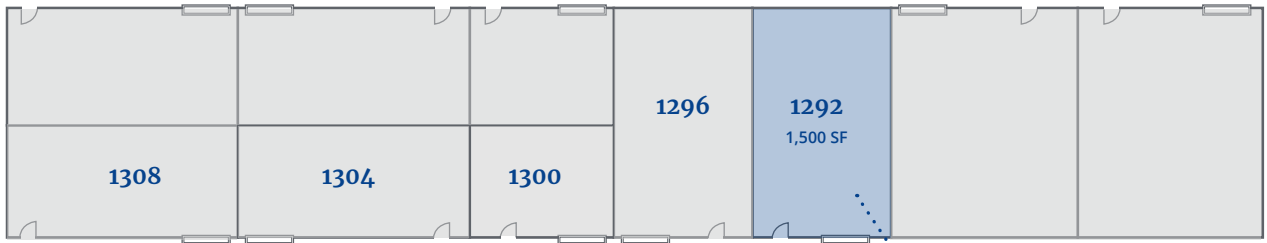
Pictures



Floor Plan

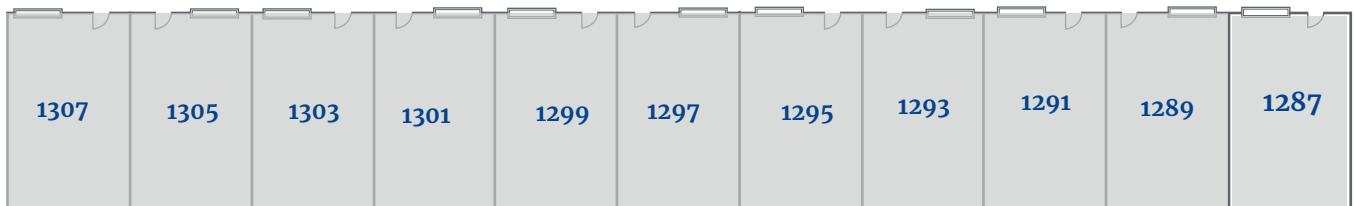
635 South

NORTH BUILDING: 1,500 SF



650 South

SOUTH BUILDING





Brandon Huntsman
 Executive Vice President
 +1 801 830 9232
 brandon.huntsman@colliers.com

Josh Martin
 Executive Vice President
 +1 801 830 2004
 iosh.martin@colliers.com

Colliers
 2100 Pleasant Grove Blvd., Suite 200
 Pleasant Grove, UT 84062
 Main: +1 801 947 8300
 colliers.com

This document has been prepared by Colliers International for advertising and general information only. Colliers International makes no guarantees, representations or warranties of any kind, expressed or implied, regarding the information including, but not limited to, warranties of content, accuracy and reliability. Any interested party should undertake their own inquiries as to the accuracy of the information. Colliers International excludes unequivocally all inferred or implied terms, conditions and warranties arising out of this document and excludes all liability for loss and damages arising there from. This publication is the copyrighted property of Colliers International and/or its licensor(s). ©2026. All rights reserved.