

FOR SALE
79 Clover Street
Holland, Michigan 49423



Flex / Manufacturing Building for Sale



15,103 SF Flex/Manufacturing Building

- Approximately 3,067 SF office
- Parking: 2.65/1,000 SF
- Fully climate controlled
- New insulated roof in 2022
- 13' ceiling height; 10' clear height
- 1 dock with leveler
- 1 grade level door
- 800 Amps 480v/3-Phase
- Immediate access to Hwy 31



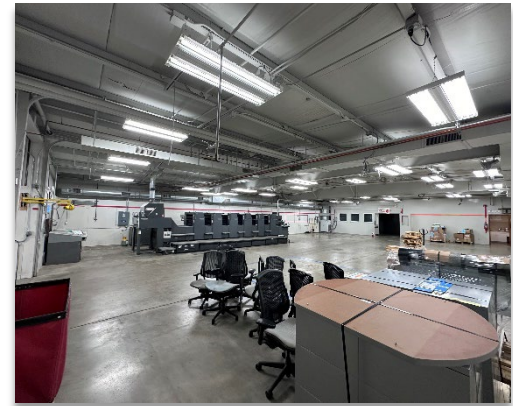
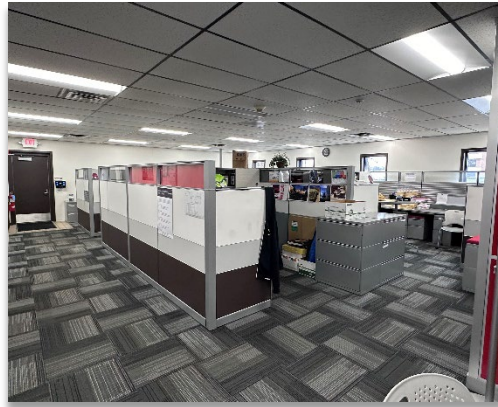
Sale Price: \$1,266,000 (\$83.82/SF)

Contact

JASON WEBB, SIOR, CCIM
Senior Director
+1 616 238 1044
jason.m.webb@cushwake.com

Grand Rapids, Michigan
Direct +1 616 327 2218
cushmanwakefield.com

FOR SALE
79 Clover Street
Holland, Michigan 49423

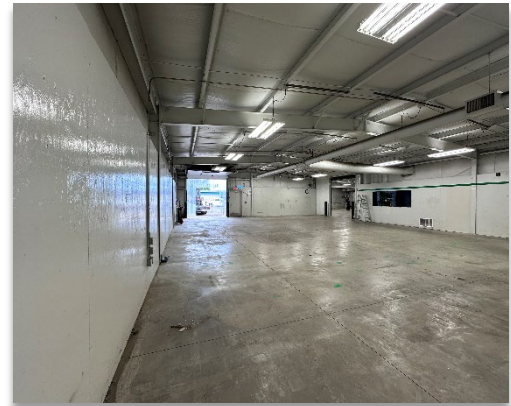
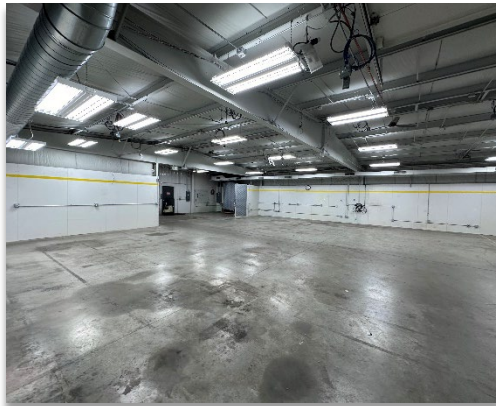
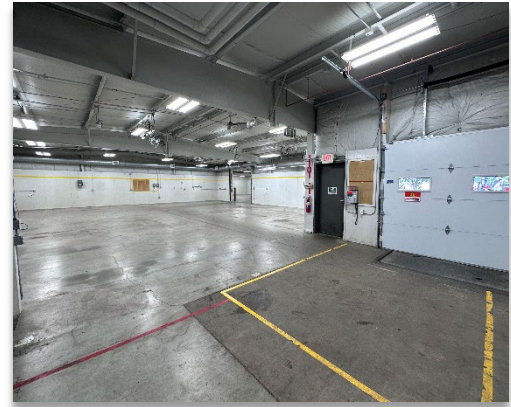
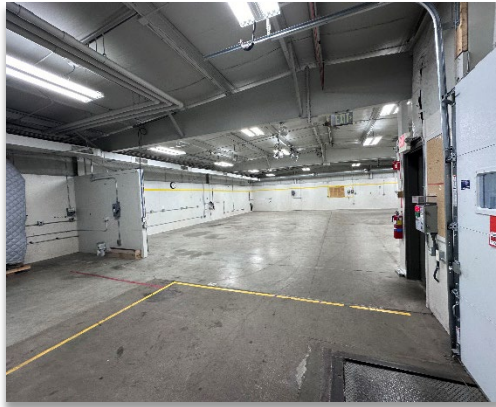
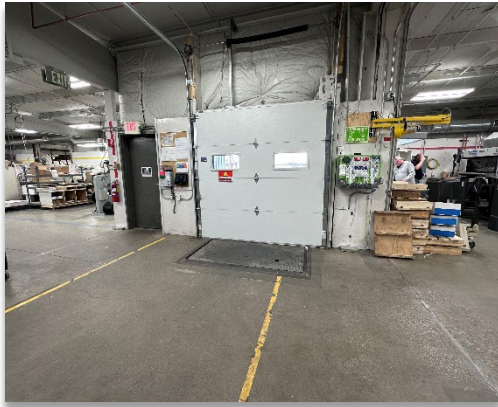
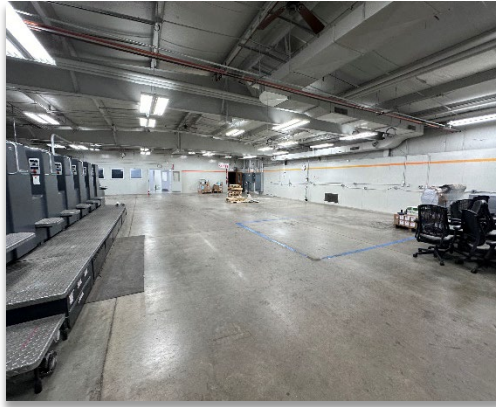


Contact

JASON WEBB, SIOR, CCIM
Senior Director
+1 616 238 1044
jason.m.webb@cushwake.com

Grand Rapids, Michigan
Direct +1 616 327 2218
cushmanwakefield.com

FOR SALE
79 Clover Street
Holland, Michigan 49423

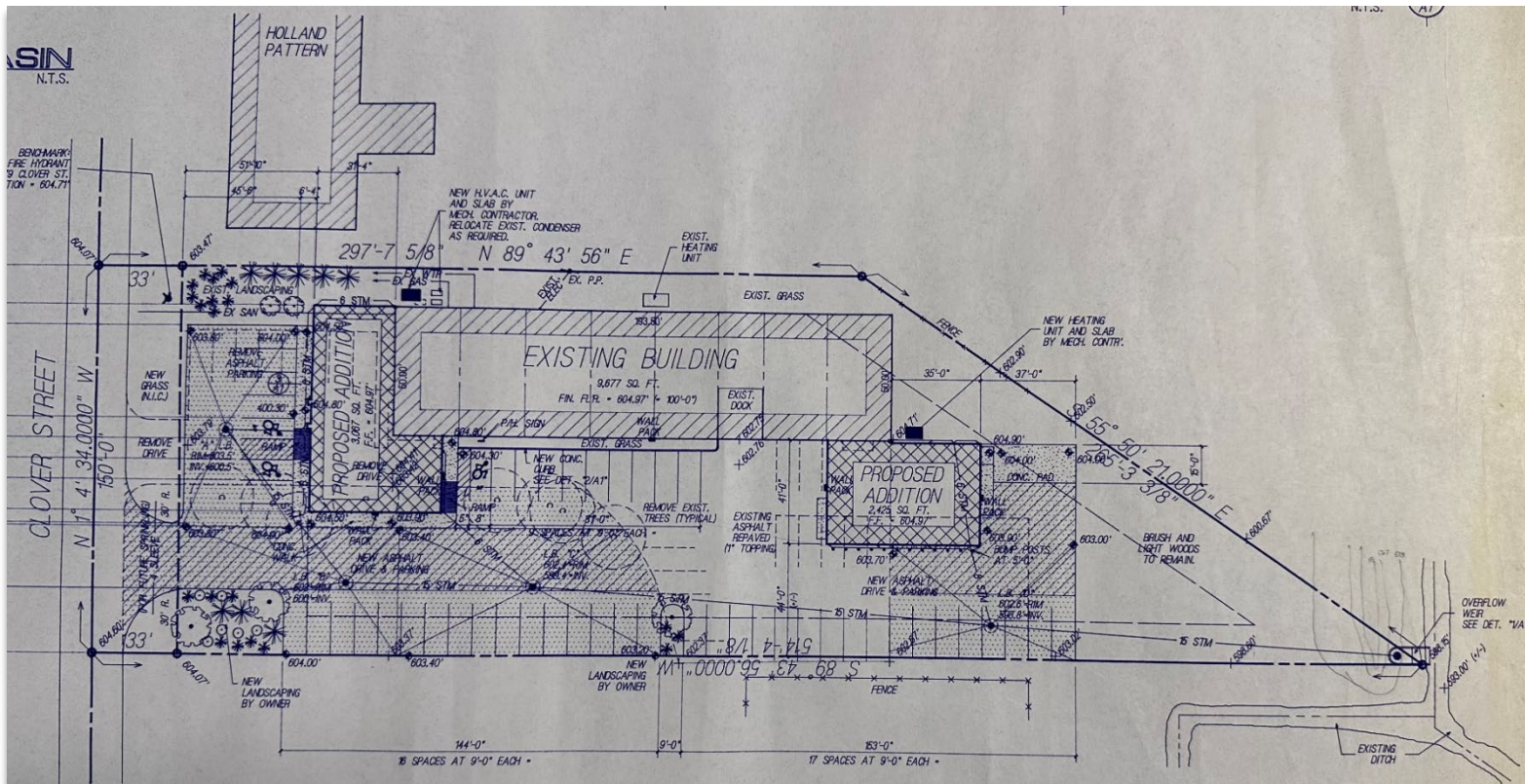
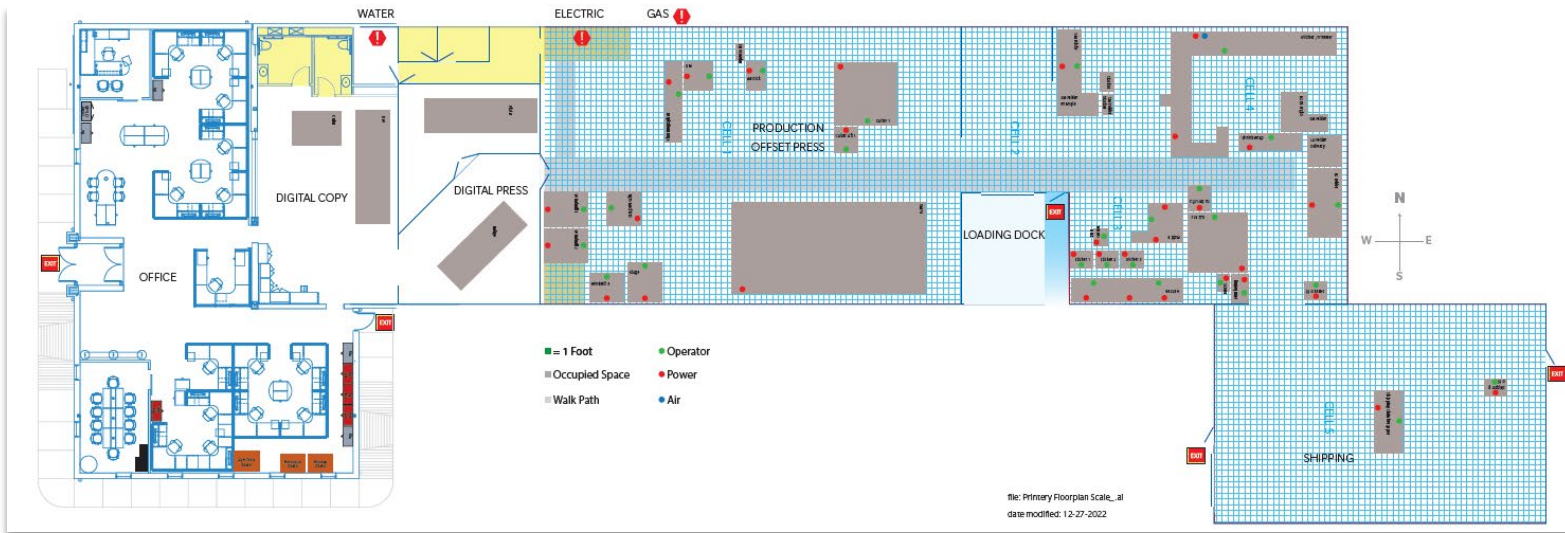


Contact

JASON WEBB, SIOR, CCIM
Senior Director
+1 616 238 1044
jason.m.webb@cushwake.com

Grand Rapids, Michigan
Direct +1 616 327 2218
cushmanwakefield.com

FOR SALE
79 Clover Street
 Holland, Michigan 49423

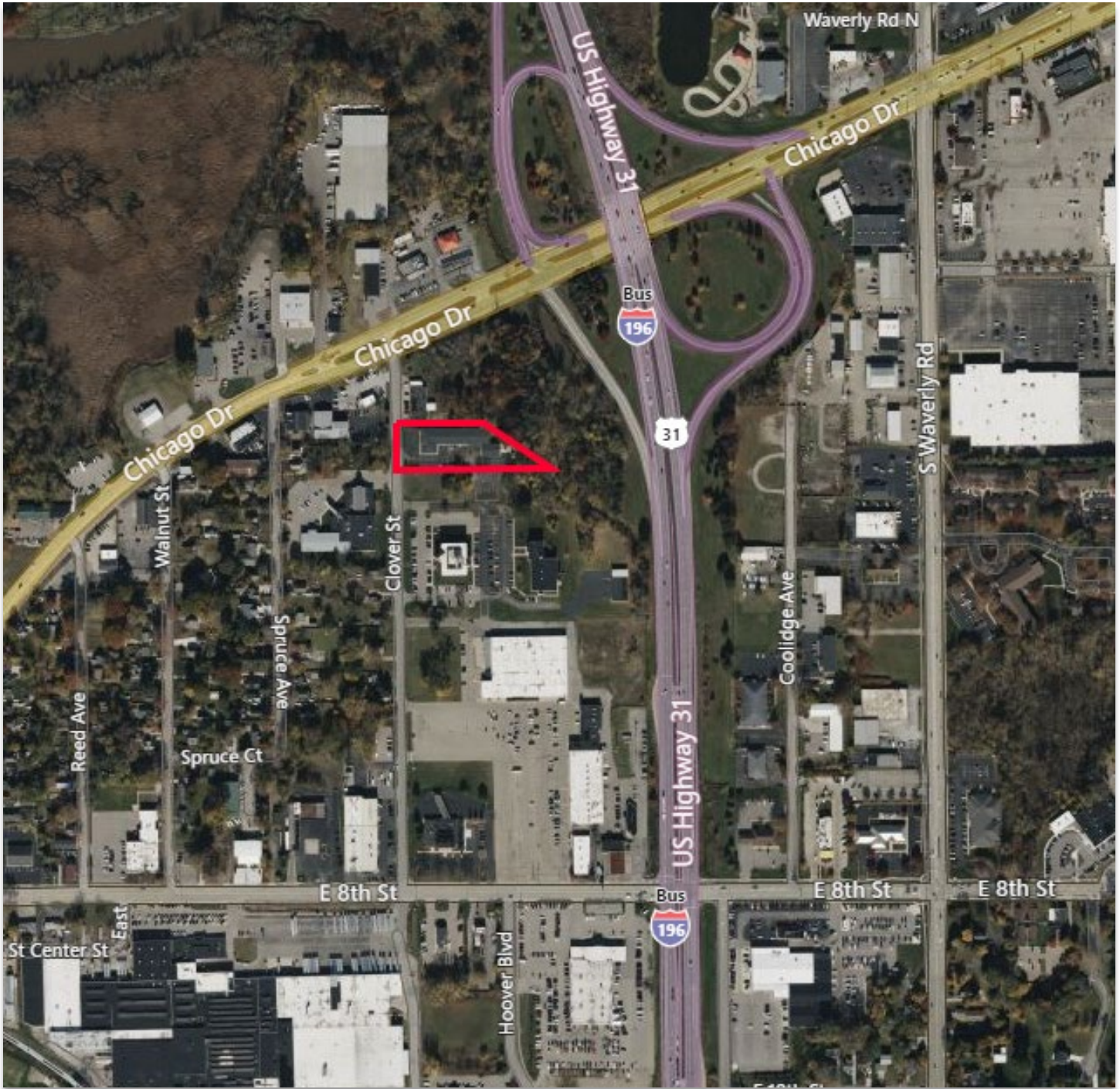


Contact

JASON WEBB, SIOR, CCIM
 Senior Director
 +1 616 238 1044
 jason.m.webb@cushwake.com

Grand Rapids, Michigan
 Direct +1 616 327 2218
 cushmanwakefield.com

FOR SALE
79 Clover Street
Holland, Michigan 49423



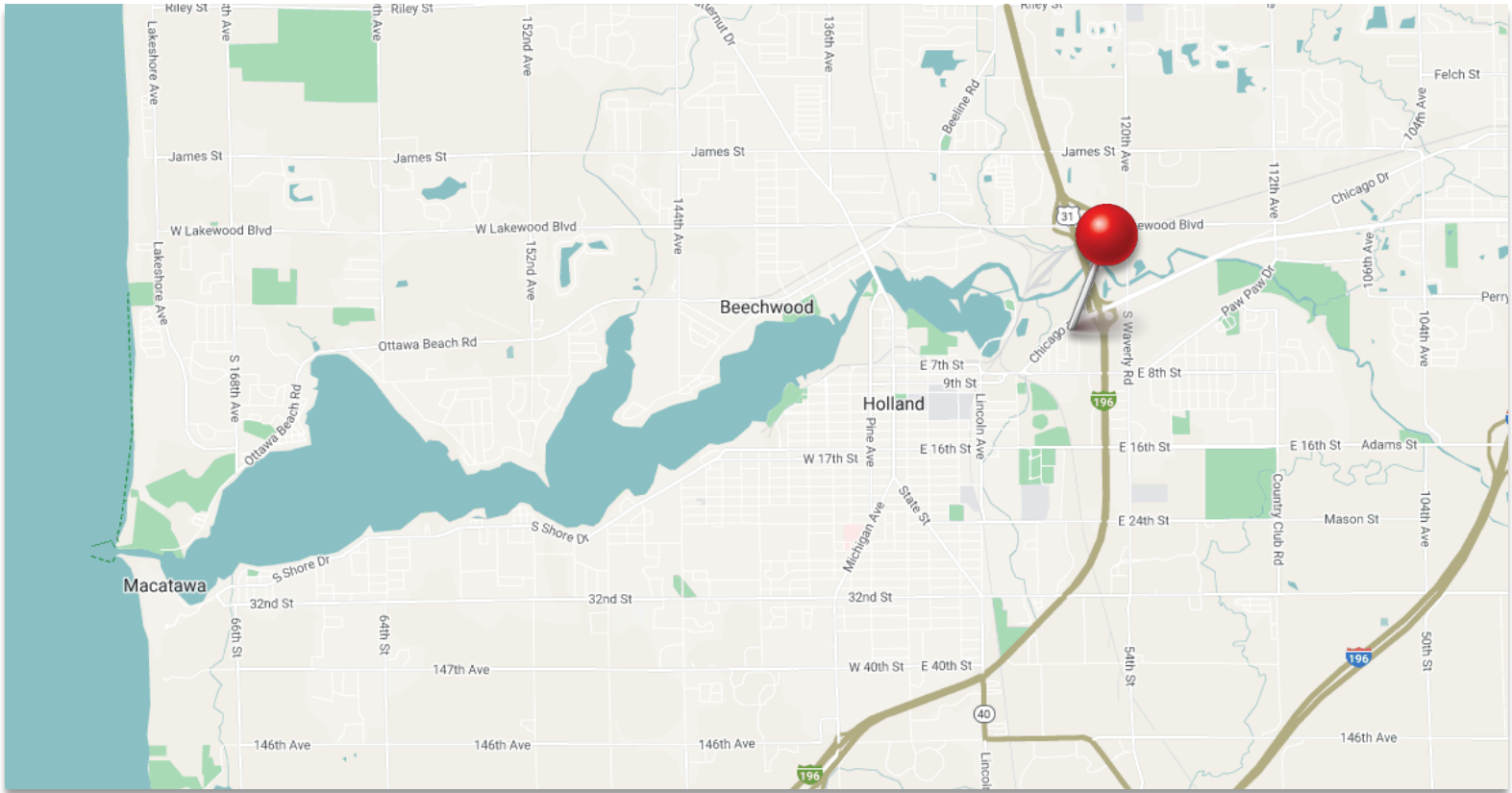
Property lines are approximate

Contact

JASON WEBB, SIOR, CCIM
Senior Director
+1 616 238 1044
jason.m.webb@cushwake.com

Grand Rapids, Michigan
Direct +1 616 327 2218
cushmanwakefield.com

FOR SALE
79 Clover Street
 Holland, Michigan 49423



Address	79 Clover Street Holland, MI 49423
Year Built	1960
Total Building SF	15,103
Total Land Area	1.61 acres
Frontage	150 on Clover Street
Primary Use	Flex / Manufacturing
Stories	1
Parking	54 surface spaces
Sale Price	\$ 1,266,000 (\$83.82/SF)
Property Taxes (2023)	\$14,303.04
Zoning	C-2 Community Commercial District
Municipality	Holland Charter Township

Parcel ID	70 16 28 276 042
Legal Description	PART OF LOT 6 VILLAGE OF CEDAR SWAMP COM N 89D 43M 56S E 931.69 FT & N 01D 04M 34S W 1394.9 FT FROM CEN 1/4 COR, TH N 01D 04M 34S W 150 FT, E 290.4 FT, S 55D 50M 21S E 272.87 FT, TH N 89D 43M 56S W 514.34 FT TO BEG. VILLAGE OF CEDAR SWAMP FROM 16-28-276-003,039 4/95
Major Crossroads	Chicago Drive & Business 196/US 31
Neighboring Businesses	DeNooyer Chevrolet Secretary of State O'Reilly Auto Parts Holland Energy Park
Population	61,190
Daytime Population	49,667
Household Income	\$61,892

Contact

JASON WEBB, SIOR, CCIM
 Senior Director
 +1 616 238 1044
 jason.m.webb@cushwake.com

Grand Rapids, Michigan
 Direct +1 616 327 2218
 cushmanwakefield.com