

## Conference Room Overview Member Price (Guest Price)

### Small Conference Room - \$30/Hr (\$35/ Hr)

- Seats Up To 5 Comfortably
- 1 Large White Board
- 1 Large TV With Wired & Wireless Connectivity
- 1 Dedicated Phone & Phone Line
- Wifi, Free Coffee & Free Parking Included



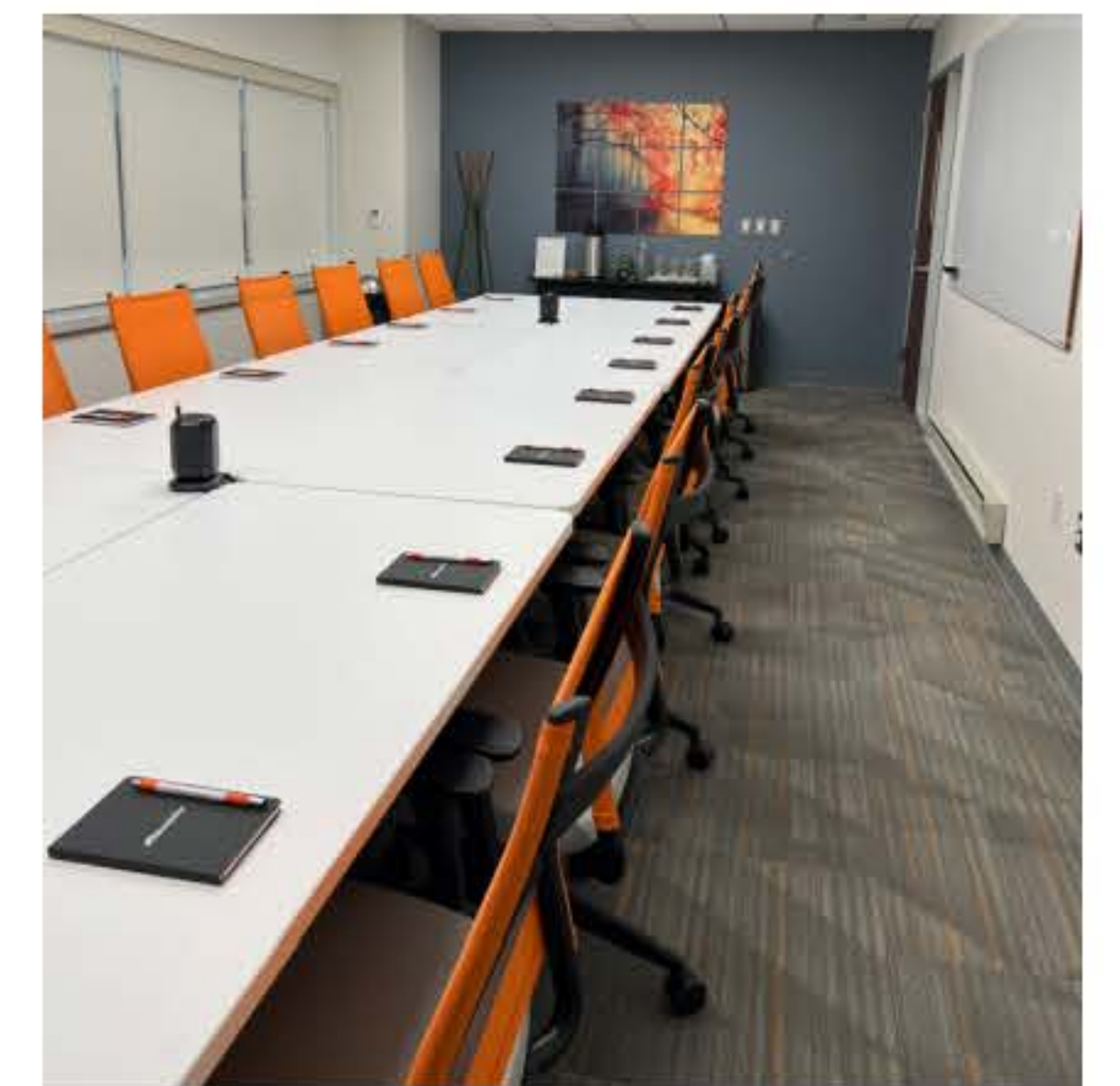
### Medium Conference Room - \$40/ Hr (\$50/ Hr)

- Seats Up To 8 Comfortably
- 1 Large White Board
- 1 Large TV With Wired & Wireless Connectivity
- 1 Dedicated Phone & Phone Line
- Wifi, Free Coffee & Free Parking Included



### Large Conference Room - \$50/ Hr (\$65/ Hr)

- Seats Up To 16 Comfortably
- 2 Large White Boards
- 1 Large TV With Wired & Wireless Connectivity
- 1 Dedicated Phone & Phone Line
- Wifi, Free Coffee & Free Parking Included



Large Conference Room Pictured Left To Right: Break Out Teams, Classroom, Boardroom

### Atrium Conference Room - \$75/ Hr (\$100/ Hr)

- Seats 30 - Including Power & Table Top Space
- Seats 45 - Not Including Power Or Dedicated Table Top Space
- 1 Large Projector With Wired HDMI Connectivity
- Wifi, Free Coffee & Free Parking Included



Atrium Conference Room:  
30 Person Setup

Atrium Conference Room: 45 Person Setup

## Hourly Office Overview Member Price (Guest Price)

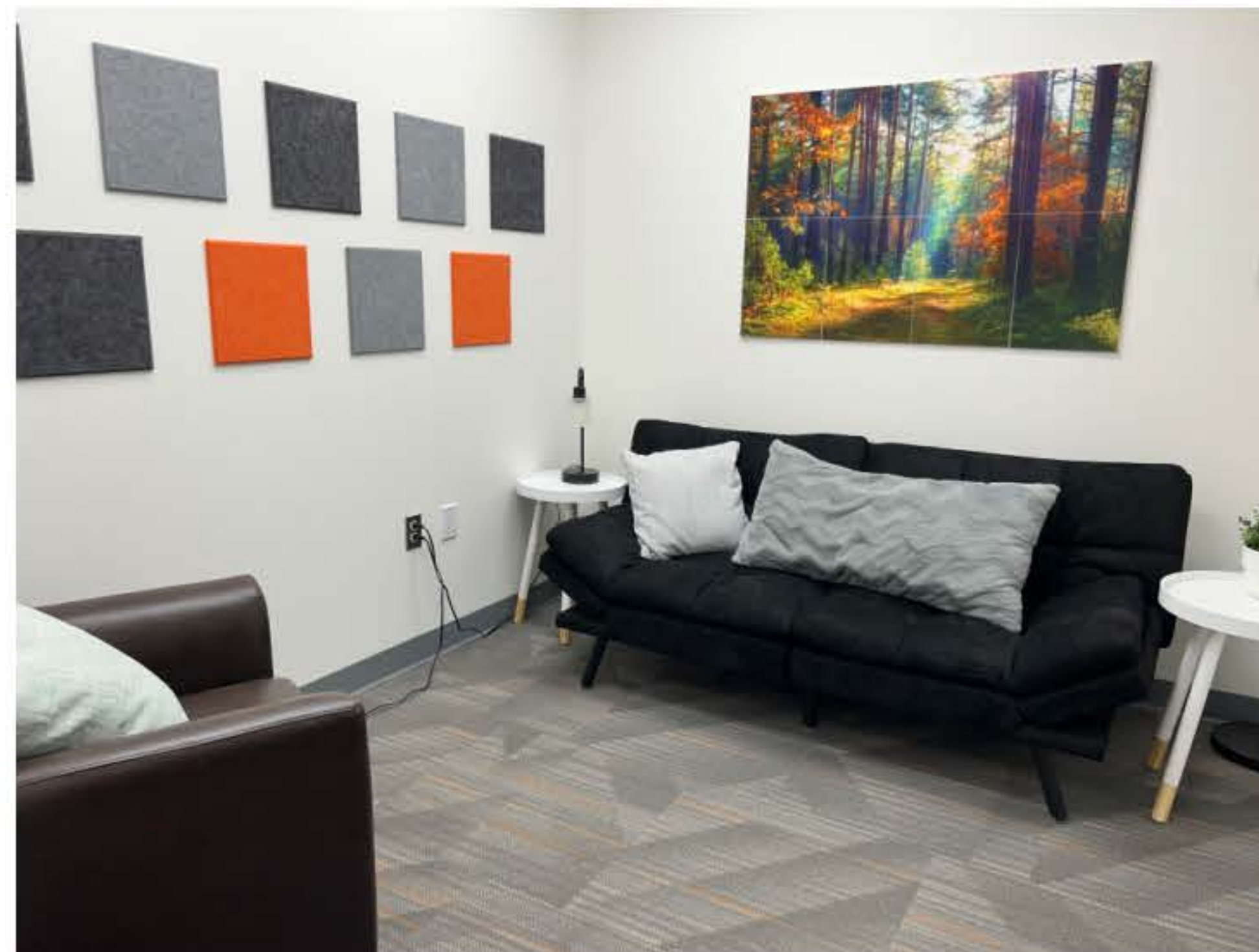
### Day Office - \$20/Hr (\$25/ Hr)

- Seats Up To 3 Comfortably
- 1 Large External Monitor + HDMI Connectivity
- Wifi, Free Coffee & Free Parking Included
- Night & Weekend Reservations Available For Members Only
- 3 Day Offices Available
- Same Day Accomodation Available



### Therapy Day Office - \$20-25/ Hr (\$25-35/ Hr)

- Seats 3-6 Comfortably
- White Noise Machine Included
- Lamps & Soft Lighting Included
- Wifi, Free Coffee & Free Parking Included
- Night & Weekend Reservations Available For Members Only
- 3 Therapy Day Offices Available
- Same Day Accomodation Available



### Podcast Recording Studio - \$35/ Hr

- Seats 4 - Including Sony Head Phones & Shure SM7B Microphones
- Rodecaster Pro II Use Included - Must Bring Micro SD Card For Recording
- Acoustic Paneled Room To Reduce Echo & External Noise Intrusion
- Wifi, Free Coffee & Free Parking Included
- Night & Weekend Reservations Available For Members Only
- 3 Therapy Day Offices Available
- Same Day Accomodation Available





## Popular Plans Overview

### Phone Line + Voicemail Box

Starting At \$35/ Month

### Phone Answering

Starting at \$39/month + \$2.15/minute, \$199 Setup Fee

- Personalized Live Greeting, Call Screening, Call Transferring, Personalized Voice Mailbox, and more!
- Bundle & Save Eligible



### Business Mailing Address

Starting at \$35/month, \$35 Setup Fee

- Package Reception For All Carriers



### Business Mailing Address + 24/7 Access

Starting at \$89/ month, \$89 Setup Fee

- Package Reception For All Carriers
- Box & Key Included



### Co-Working

Starting at \$149/month, \$99 Setup Fee

- 24/7 Access to Office Evolution Troy
- High Speed Wi-Fi
- Free Coffee & Community Kitchen
- Bundle & Save Eligible

### Meeting Rooms

Starting at \$79/month, \$79 Set-up Fee

- \$60 in Conference Room Credit
- Free Coffee
- Hi Speed Wi-Fi included with all reservations
- Dedicated Phone Line in Conference Rooms
- Large Flat Screen TV With Wired & Wireless Connectivity
- Webcam Available
- 24/7 Access Available\*



### Private Offices

Starting at \$699/month, \$199 set-up Fee

- Furnished – Desk, Task Chair, Filing Cabinet, Additional Furniture Upgrades Available\*
- \$60 Meeting Room Credit
- 24/7 Access to Office Evolution Troy
- Business Mailing Address included
- National access to all Office Evolution locations



\*Additional Fee May Apply