



RETAIL SPACE

BEDMINSTER, NJ

2484 LAMINGTON ROAD

On the corner of Lamington Road & Somerville Road

SIZE

Ground Floor 1,900 SF

ASKING RENT

Upon Request

TERM

Existing Sublease Expiration: 6/30/2031

Long term lease available

CO-TENANTS

Trattoria Mediterannea, Bedminster Pizza

CONTACT EXCLUSIVE AGENTS

JON CORBISCELLO

jcorbiscello@ripconj.com

973.420.9029

FLORIAN SUSERMAN

fsuserman@ripconj.com

201.777.2301

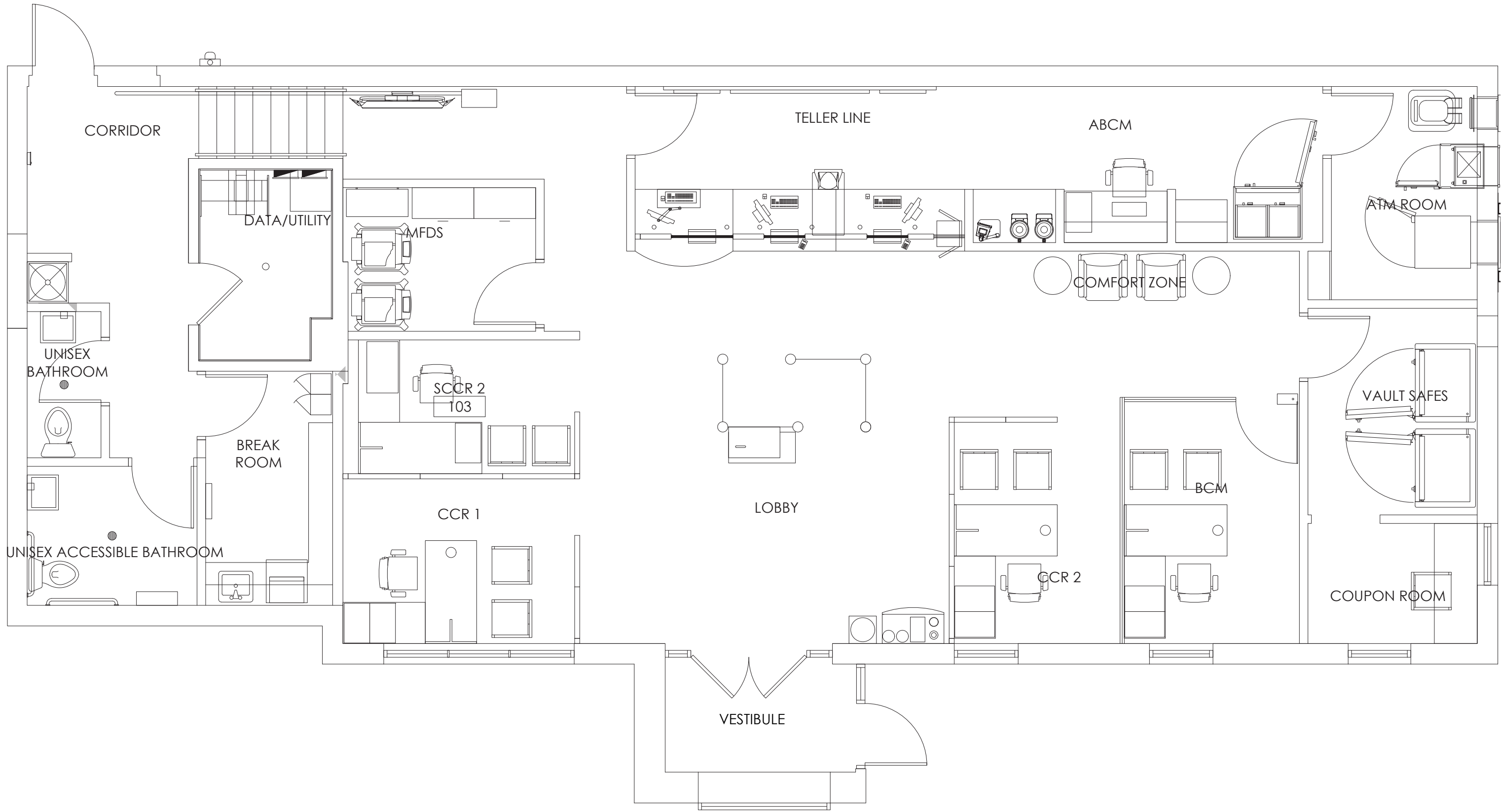
RIPCO
REAL ESTATE

611 River Drive
3rd Floor
Elmwood Park, NJ 07407
201.777.2300

Please visit us at ripconj.com for more information

This information has been secured from sources we believe to be reliable, but we make no representations as to the accuracy of the information. References to square footage are approximate. Buyer must verify the information and bears all risk for any inaccuracies.

FLOOR PLAN



MARKET AERIAL



DEMOGRAPHICS



1 MILE RADIUS

POPULATION	TOTAL BUSINESSES
1,559	262
HOUSEHOLDS	TOTAL EMPLOYEES
647	2,377
MEDIAN AGE	TOTAL DAYTIME POPULATION
49.6	3,239
COLLEGE GRADUATES (Bachelor's +)	AVERAGE HOUSEHOLD INCOME
682 - 58.7%	\$197,392

3 MILE RADIUS

POPULATION	TOTAL BUSINESSES
16,859	723
HOUSEHOLDS	TOTAL EMPLOYEES
7,125	10,481
MEDIAN AGE	TOTAL DAYTIME POPULATION
46.0	18,262
COLLEGE GRADUATES (Bachelor's +)	AVERAGE HOUSEHOLD INCOME
9,037 - 72.5%	\$211,972

5 MILE RADIUS

POPULATION	TOTAL BUSINESSES
44,788	1,665
HOUSEHOLDS	TOTAL EMPLOYEES
17,167	38,315
MEDIAN AGE	TOTAL DAYTIME POPULATION
45.3	60,112
COLLEGE GRADUATES (Bachelor's +)	AVERAGE HOUSEHOLD INCOME
22,771 - 71.1%	\$237,411

*2024 estimates