

# EYDE DEVELOPMENT

2410 WOODLAKE DRIVE  
OKEMOS, MI 48864



## BUILDING SQUARE FOOTAGE:

- 5,514 SF Building

## ADVANTAGES:

- On site parking available

## FEATURES/AMENITIES:

- Close proximity to restaurants, gyms, lodging, dry cleaners, grocery and retail

## STRATEGIC LOCATION:

- Strategically located at the corner of Okemos Road and Jolly Road
- Easy access to I-96
- Close proximity to medical and educational facilities



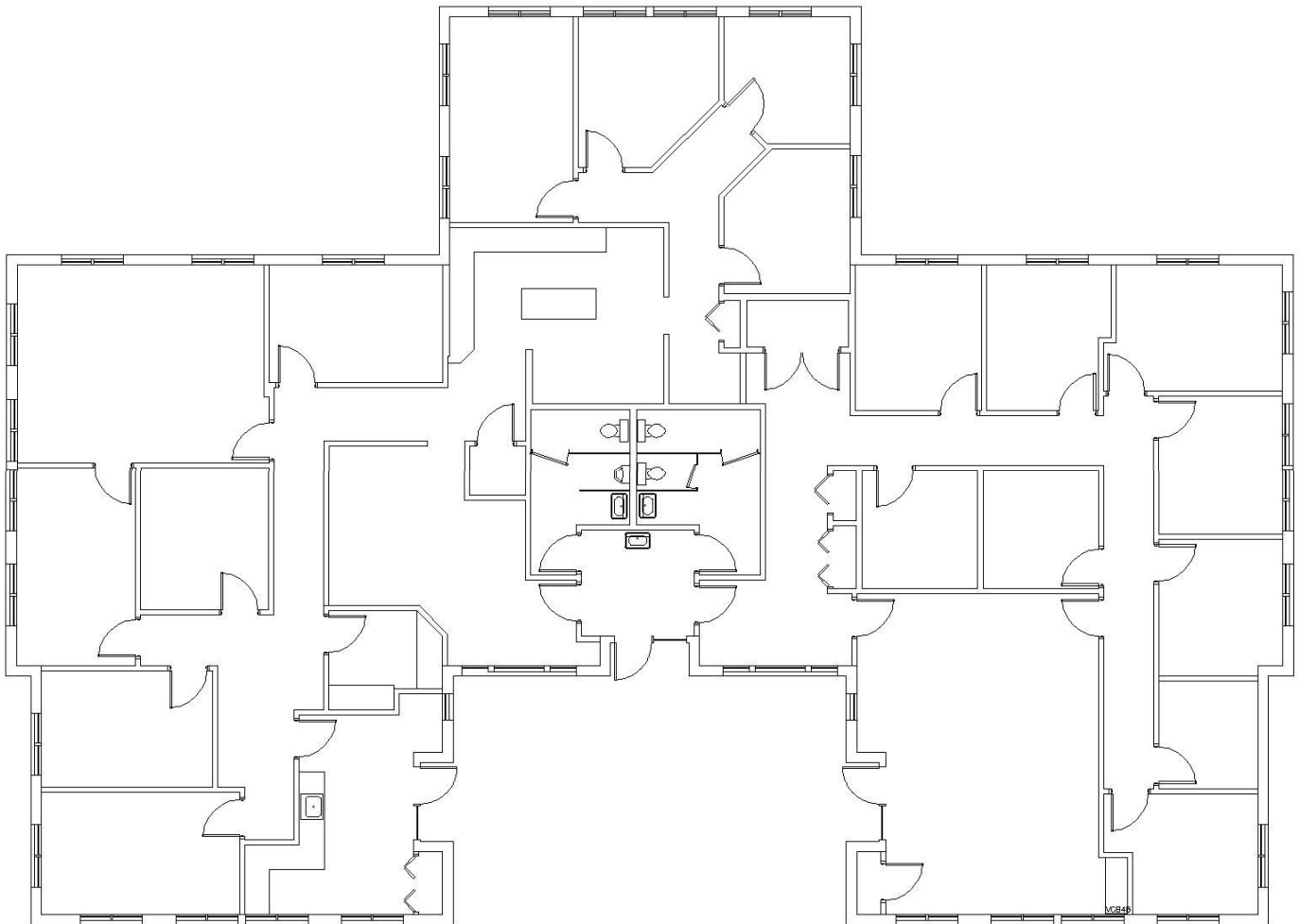
## CONTACT

**Eyde Development**  
517-903-3933 | [eyde.com](http://eyde.com)

# EYDE DEVELOPMENT

2410 WOODLAKE DRIVE  
OKEMOS, MI 48864

## BUILDING PLAN



## CONTACT

**Eyde Development**

517-903-3933 | [eyde.com](http://eyde.com)

| Eyde Development | 300 S. Washington Square #400 Lansing, MI 48933 |  
| Phone: 517-903-3933 | Fax: 517-484-5695 | [www.eyde.com](http://www.eyde.com) |