

# VACANT LAND ZONED B-3 OR R-3

27W130 ST.CHARLES RD,  
CAROL STREAM

\$ 1,600,000

**RE/MAX**  
COMMERCIAL®

TIM SOTIS

RE/MAX ALL PRO

66 STRATFORD DR. BLOOMINGDALE IL 60108

TIM@TIMSOTISGROUP.COM

630-669-9901



## THE PROPERTY

Commercial lot available in an ideal location. Conveniently located on St. Charles Rd. 4.47 Acres of land. Easy accessibility to North Ave. and County Farm Rd. Ideal development site for a warehouse, industrial condos or office space.

## PROPERTY FEATURES

- Trucking, Manufacturing, Industrial
- Outdoor Yard Space Allowed
- Zoning: I-1
- Investment Property
- Great Location

## RE/MAX ALL PRO

66 STRATFORD DR.  
BLOOMINGDALE IL 60108  
O: (630)669.9901

## TIM SOTIS

RE/MAX ALL PRO  
M: 630-669-9901  
TIM@TIMSOTISGROUP.COM





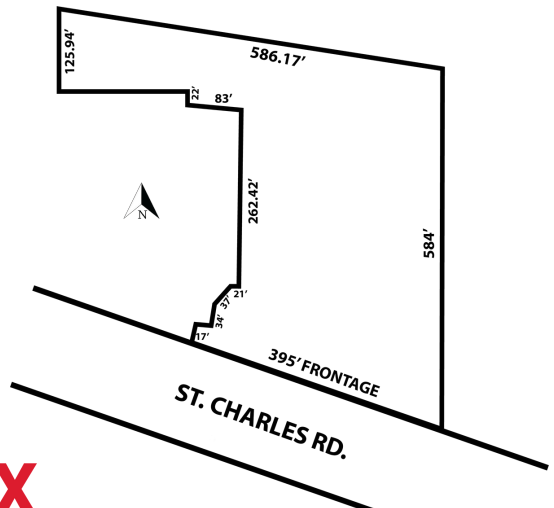
County Farm Rd

North Ave



**LOCATION**

Just south of North Ave.  
East of County Farm Rd.  
Lot is on the north side of St. Charles Rd.



**TIM SOTIS**  
RE/MAX ALL PRO  
M: 630-669-9901  
TIM@TIMSOTISGROUP.COM

