

Available For Lease

± 7072 SF

Retail | Flex Space

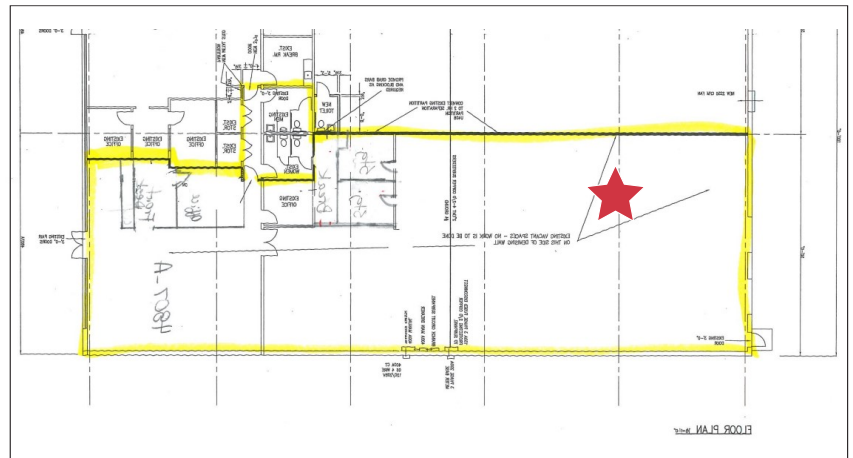


4807-A W. Gate City Blvd.

Greensboro, North Carolina 27407

Property Features

- Free-Standing Two-Tenant Building
- 7,072 SF Remaining for Lease
- 2.27± Acres
- Zoning HB
- Potential Use: Retail or Industrial Flex
- 75'W x 150'D
- Drive-In Door: (1) 10'6" - 12'
- Dock High Door: (1) 8' - 10' with Ramp



For Lease: \$ 6,500/Month - MG

For more information, contact: **Dan Pierce**

336.294.8900 • dpierce@naipt.com

Demographics (2024)

	1 Mile	3 Mile	5 Mile
Population	6,061	58,725	149,248
Households	2,405	24,117	63,128
Average HH Income	\$49,315	\$48,399	\$69,107

NO WARRANTY OR REPRESENTATION, EXPRESS OR IMPLIED, IS MADE AS TO THE ACCURACY OF THE INFORMATION CONTAINED HEREIN, AND THE SAME IS SUBMITTED SUBJECT TO ERRORS, OMISSIONS, CHANGE OF PRICE, RENTAL OR OTHER CONDITIONS, PRIOR SALE, LEASE OR FINANCING, OR WITHDRAWAL WITHOUT NOTICE, AND OF ANY SPECIAL LISTING CONDITIONS IMPOSED BY OUR PRINCIPALS NO WARRANTIES OR REPRESENTATIONS ARE MADE AS TO THE CONDITION OF THE PROPERTY OR ANY HAZARDS CONTAINED THEREIN ARE ANY TO BE IMPLIED.

348 N Elm Street
Greensboro, NC 27401

336.373.0995

naipt.com