



Brookstone Centre Office Sublease

100 Brookstone Centre Parkway
Columbus, Georgia 31904

Property Highlights

- +/- 12,592 SF office building
- Zoned CO
- Prime location
- Sublease - All or part

Property Overview

Situated in a strategic location with easy access to local amenities, this +/- 12,592 square foot office building offers an ideal setting for businesses of all sizes. The space features a range of functional areas including private offices, bathrooms, a conference room, and two kitchens. Additionally, several large, open areas are available to adapt to your specific business needs. This property is available for sublease at a negotiable rate.

Offering Summary

Lease Rate:	Negotiable
Building Size:	12,592 SF
Available SF:	All or part
Lot Size:	2.86 Acres

Demographics

	0.3 Miles	0.5 Miles	1 Mile
Total Households	98	360	1,614
Total Population	247	906	4,077

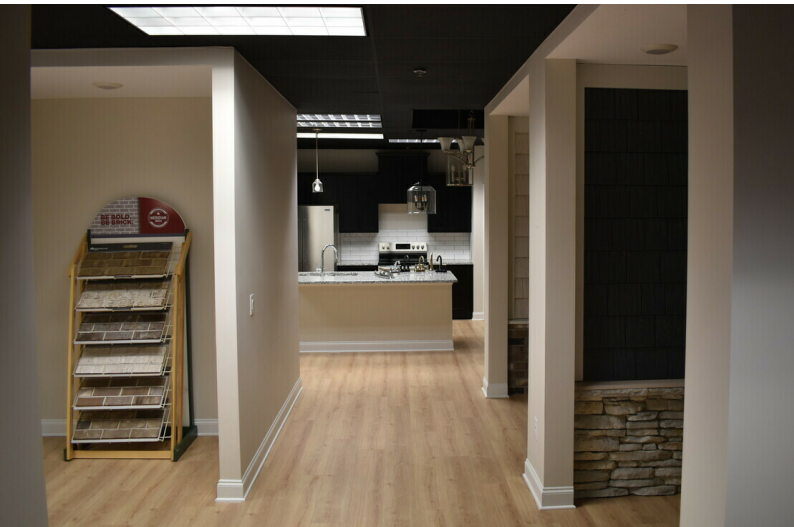
For More Information

Jack Hayes, SIOR, CCIM, MICP

O: 706 660 5418 x1002
jhayes@g2cre.com | GA #336627

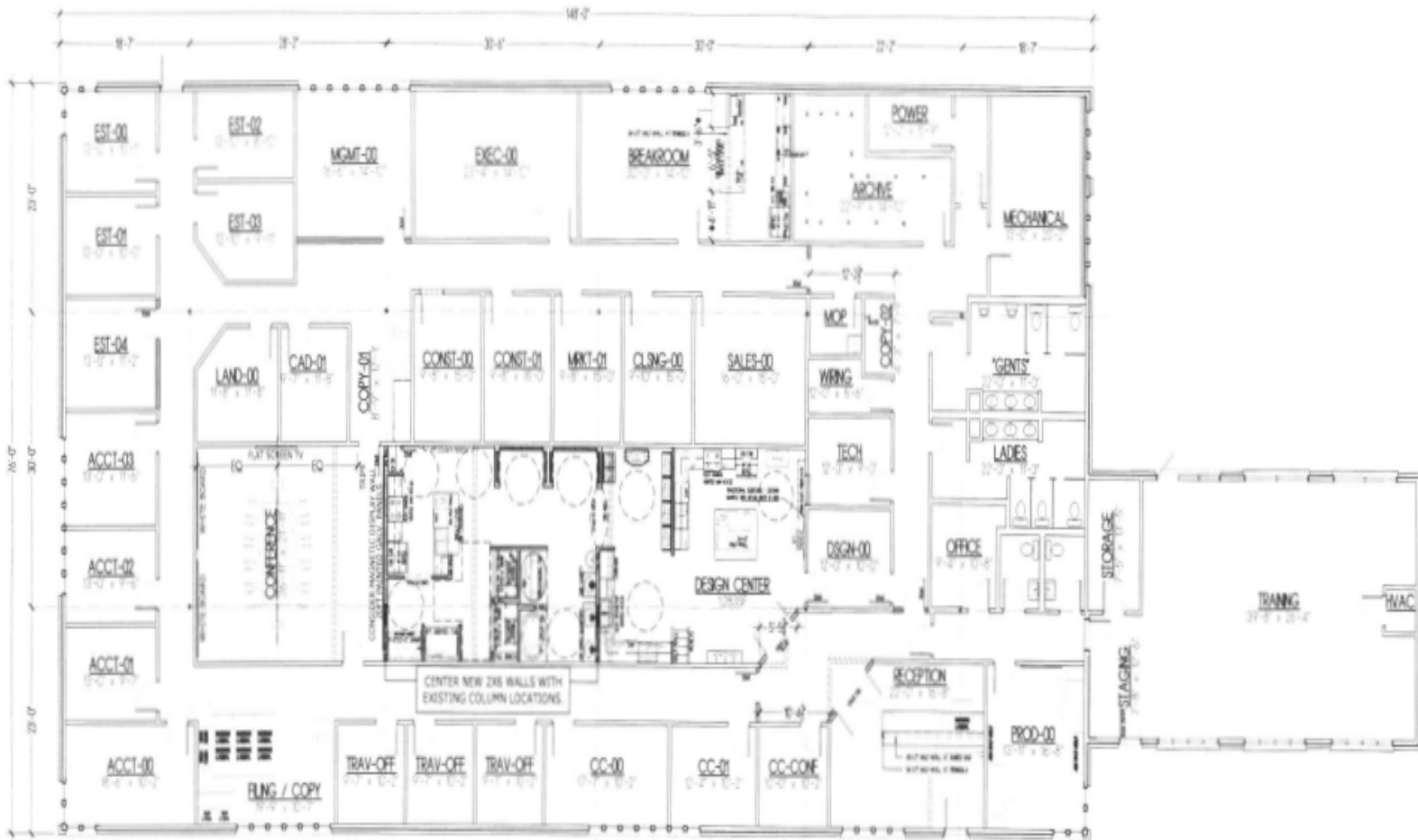
David C. Johnson

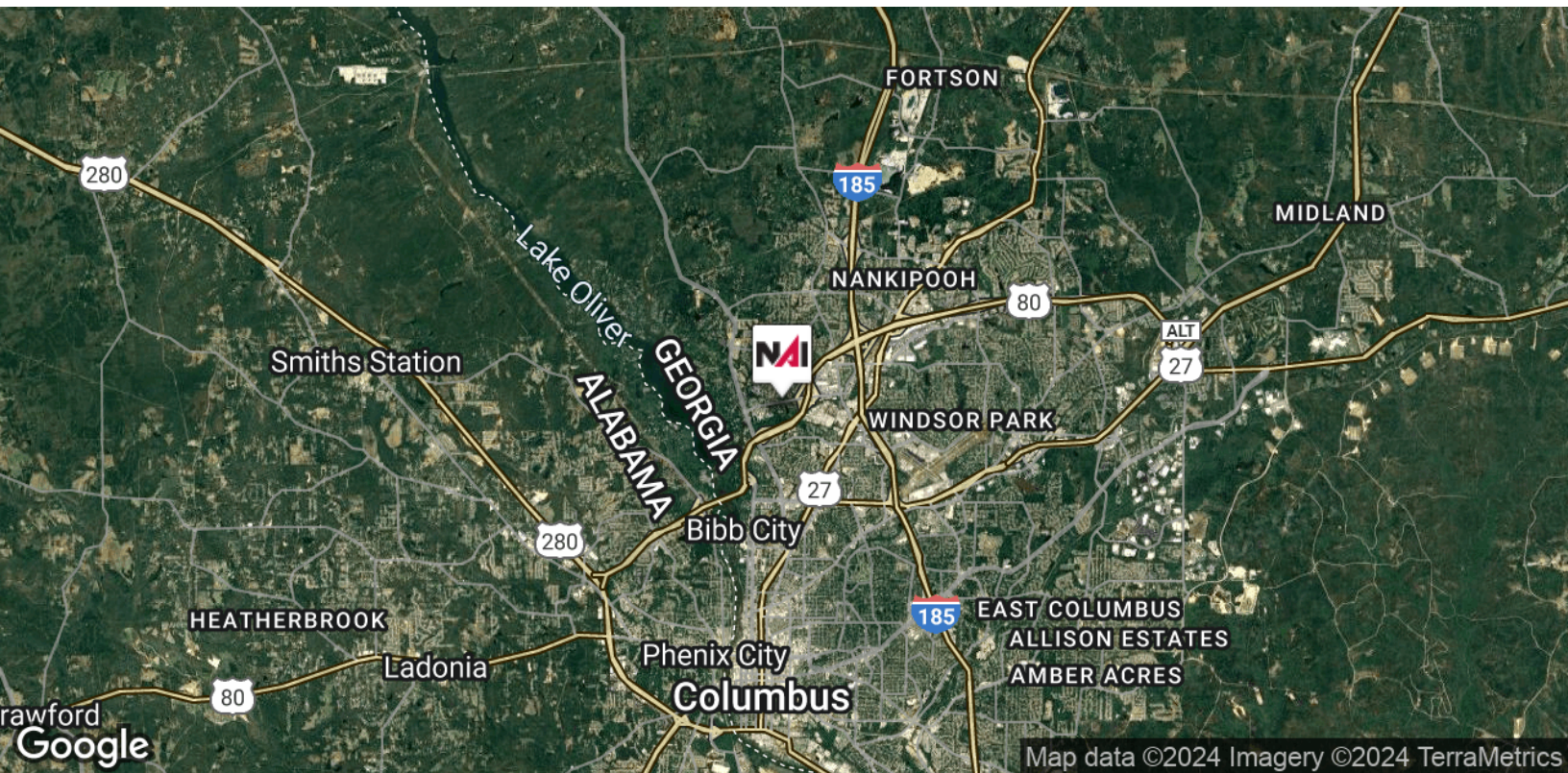
O: 706 660 5418 x1008
djohnson@g2cre.com | GA #175456



We obtained the information above from sources we believe to be reliable. However, we have not verified its accuracy and make no guarantee, warranty or representation about it. It is submitted subject to the possibility of errors, omissions, change of price, rental or other conditions, prior sale, lease or financing, or withdrawal without notice. We include projections, opinions, assumptions or estimates for example only, and they may not represent current or future performance of the property. You and your tax and legal advisors should conduct your own investigation of the property and transaction.

Post Office Box 4529
Columbus, GA 31904
706 660 5418 tel
G2cre.com





We obtained the information above from sources we believe to be reliable. However, we have not verified its accuracy and make no guarantee, warranty or representation about it. It is submitted subject to the possibility of errors, omissions, change of price, rental or other conditions, prior sale, lease or financing, or withdrawal without notice. We include projections, opinions, assumptions or estimates for example only, and they may not represent current or future performance of the property. You and your tax and legal advisors should conduct your own investigation of the property and transaction.

Post Office Box 4529
Columbus, GA 31904
706 660 5418 tel
G2cre.com

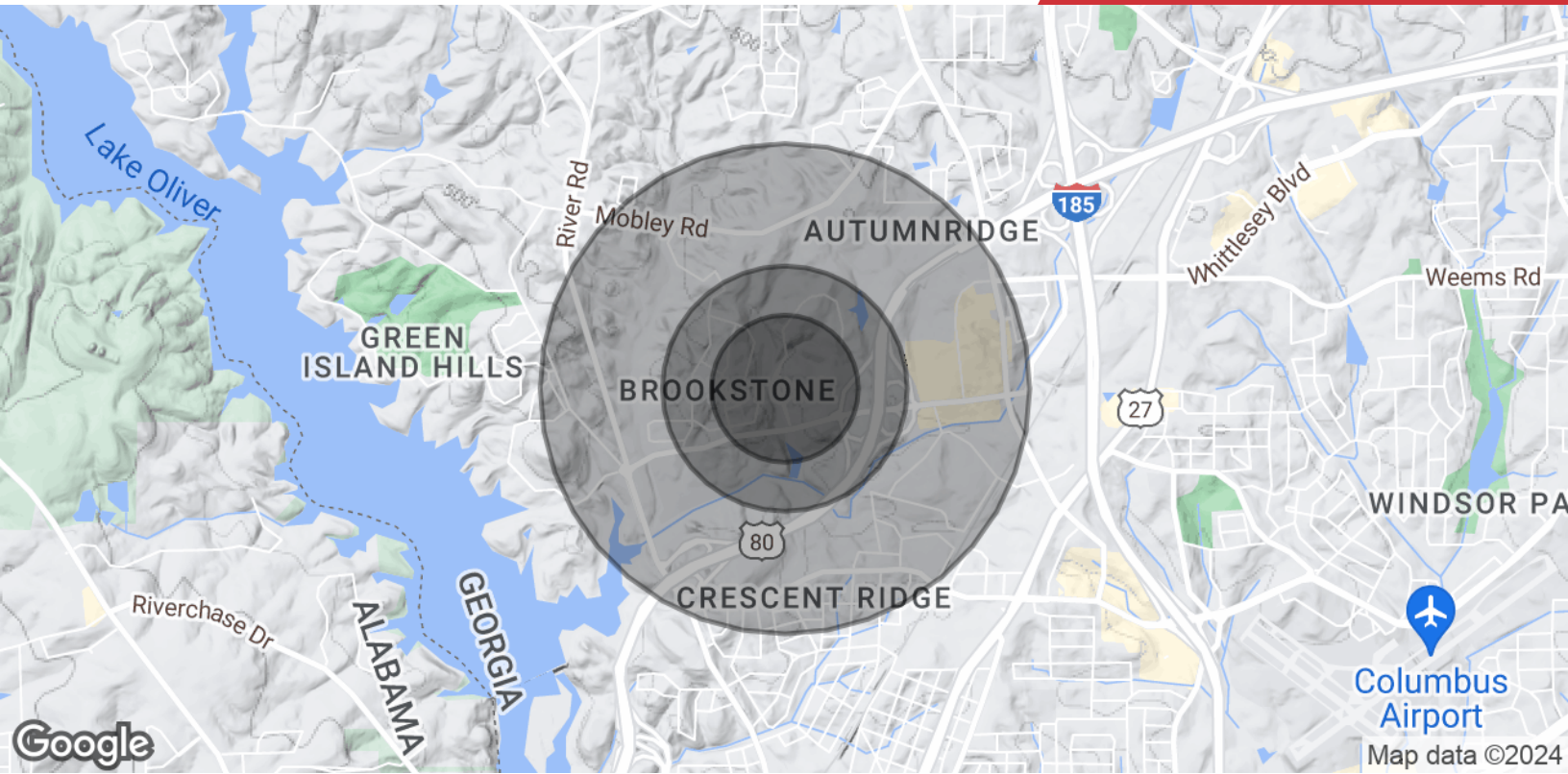


Google

Imagery ©2024 Airbus, Maxar Technologies, U.S. Geological Survey

We obtained the information above from sources we believe to be reliable. However, we have not verified its accuracy and make no guarantee, warranty or representation about it. It is submitted subject to the possibility of errors, omissions, change of price, rental or other conditions, prior sale, lease or financing, or withdrawal without notice. We include projections, opinions, assumptions or estimates for example only, and they may not represent current or future performance of the property. You and your tax and legal advisors should conduct your own investigation of the property and transaction.

Post Office Box 4529
Columbus, GA 31904
706 660 5418 tel
G2cre.com



Population

	0.3 Miles	0.5 Miles	1 Mile
Total Population	247	906	4,077
Average Age	46	46	44
Average Age (Male)	44	44	42
Average Age (Female)	48	48	45

Households & Income

	0.3 Miles	0.5 Miles	1 Mile
Total Households	98	360	1,614
# of Persons per HH	2.5	2.5	2.5
Average HH Income	\$140,172	\$138,509	\$124,583
Average House Value	\$412,997	\$405,650	\$352,407

Demographics data derived from AlphaMap

We obtained the information above from sources we believe to be reliable. However, we have not verified its accuracy and make no guarantee, warranty or representation about it. It is submitted subject to the possibility of errors, omissions, change of price, rental or other conditions, prior sale, lease or financing, or withdrawal without notice. We include projections, opinions, assumptions or estimates for example only, and they may not represent current or future performance of the property. You and your tax and legal advisors should conduct your own investigation of the property and transaction.