

FOR LEASE

6849 DUBLIN BOULEVARD, DUBLIN, CA

ONLY ONE
SPACE LEFT!!



DETAILS:



4,781 SF AVAILABLE



DUBLIN BLVD 30,000 ADT

JESSICA MAUSER

LIC.ID #01728720

jmauser@lee-associates.com

925.737.4168

SEAN OFFERS, SIOR

LIC.ID #01858116

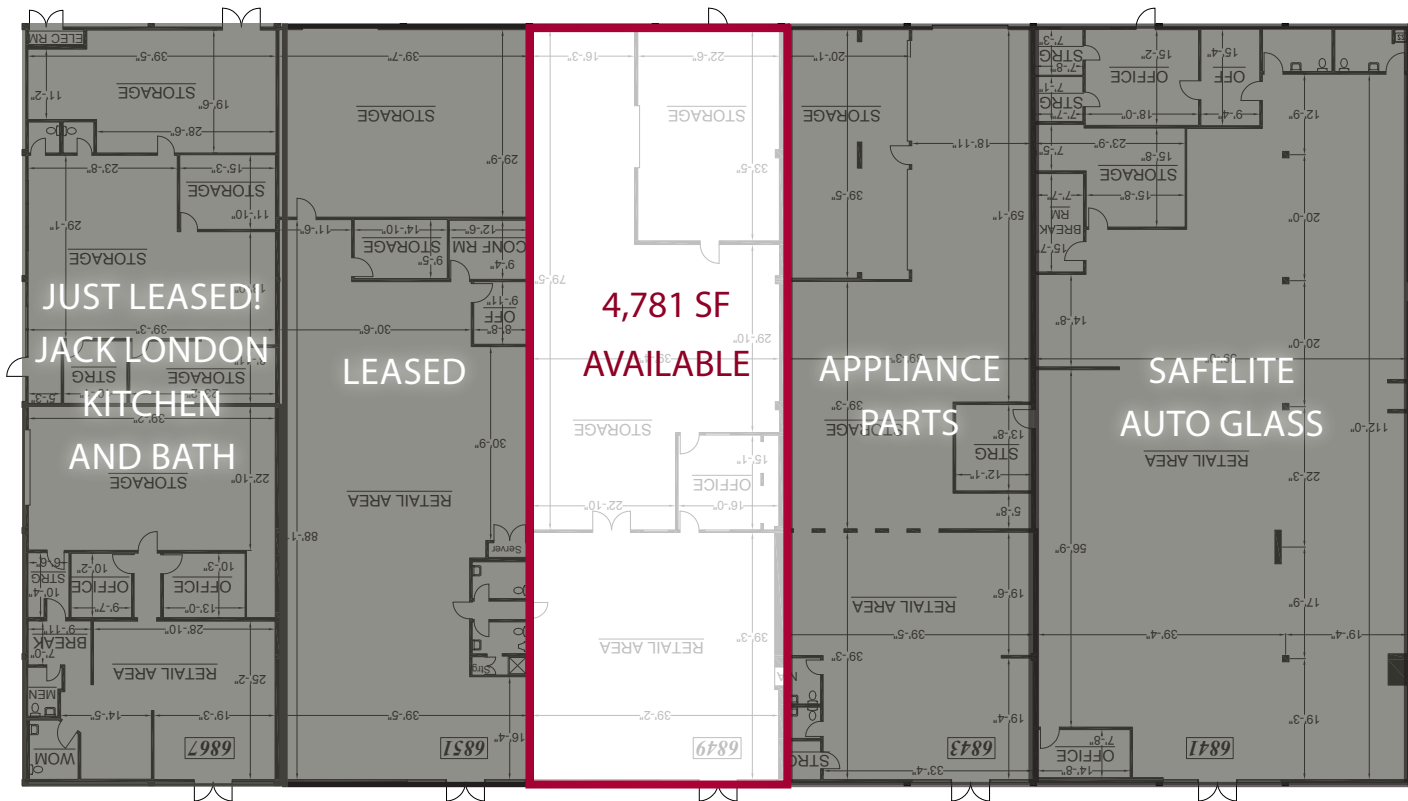
soffers@lee-associates.com

925.737.4159

LEE & ASSOCIATES
COMMERCIAL REAL ESTATE SERVICES

**LEE
RETAIL**
LEE & ASSOCIATES

FOR LEASE - 6849 DUBLIN BOULEVARD, DUBLIN, CA



DUBLIN BLVD.

LOCATION HIGHLIGHTS

- Retail with Warehouse in Central Dublin
- Great visibility on Dublin Boulevard near the I-580, I-680 interchange
- Across from Dublin City Hall, Public Library and Dublin Sports Ground
- Surrounded by densely populated neighborhoods and retail
- Potential uses: Industrial and Service Commercial

PROPERTY HIGHLIGHTS

- 4,781 SF available w/grade level roll up doors
- 14-16' clear height
- New Seismic retrofits
- New Fire Sprinkler System
- New exterior upgrades: paint and channel lettering signage

Asking: \$2.55/SF Modified Gross

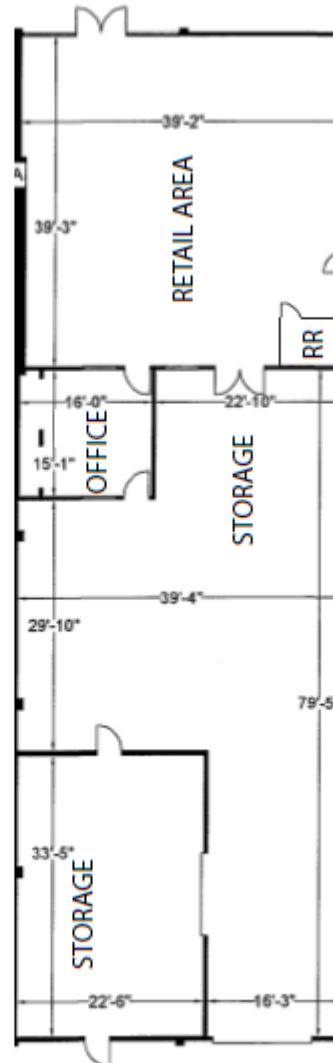
FOR LEASE - 6849 DUBLIN BOULEVARD, DUBLIN, CA



All information furnished regarding property for sale, rental or financing is from sources deemed reliable, but no warranty or representation is made to the accuracy thereof and same is submitted to errors, omissions, change of price, rental or other conditions prior to sale, lease or financing or withdrawal without notice. No liability of any kind is to be imposed on the broker herein.

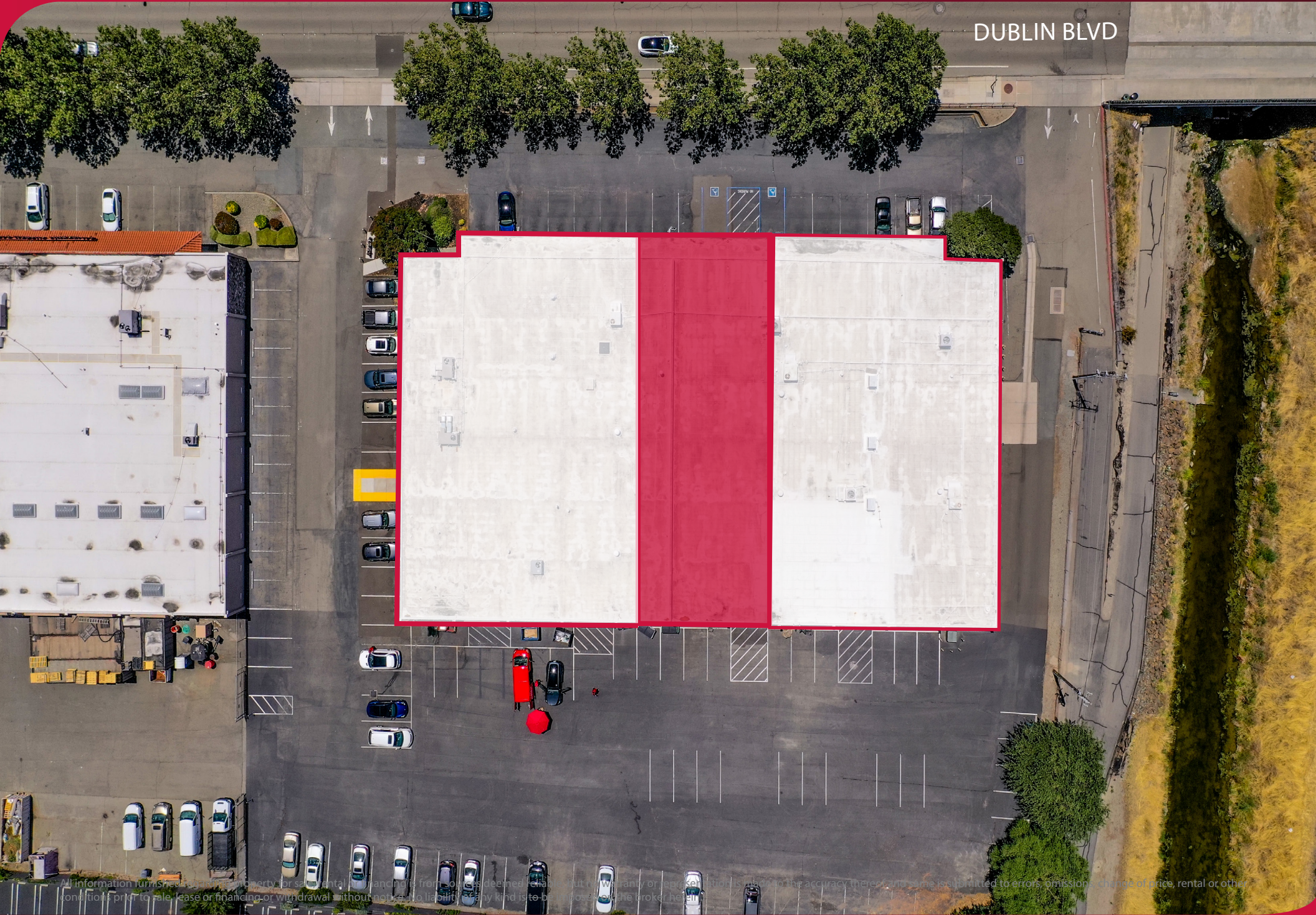
FOR LEASE - 6849 DUBLIN BOULEVARD, DUBLIN, CA

FLOOR PLAN



FOR LEASE - 6849 DUBLIN BOULEVARD, DUBLIN, CA

DUBLIN BLVD

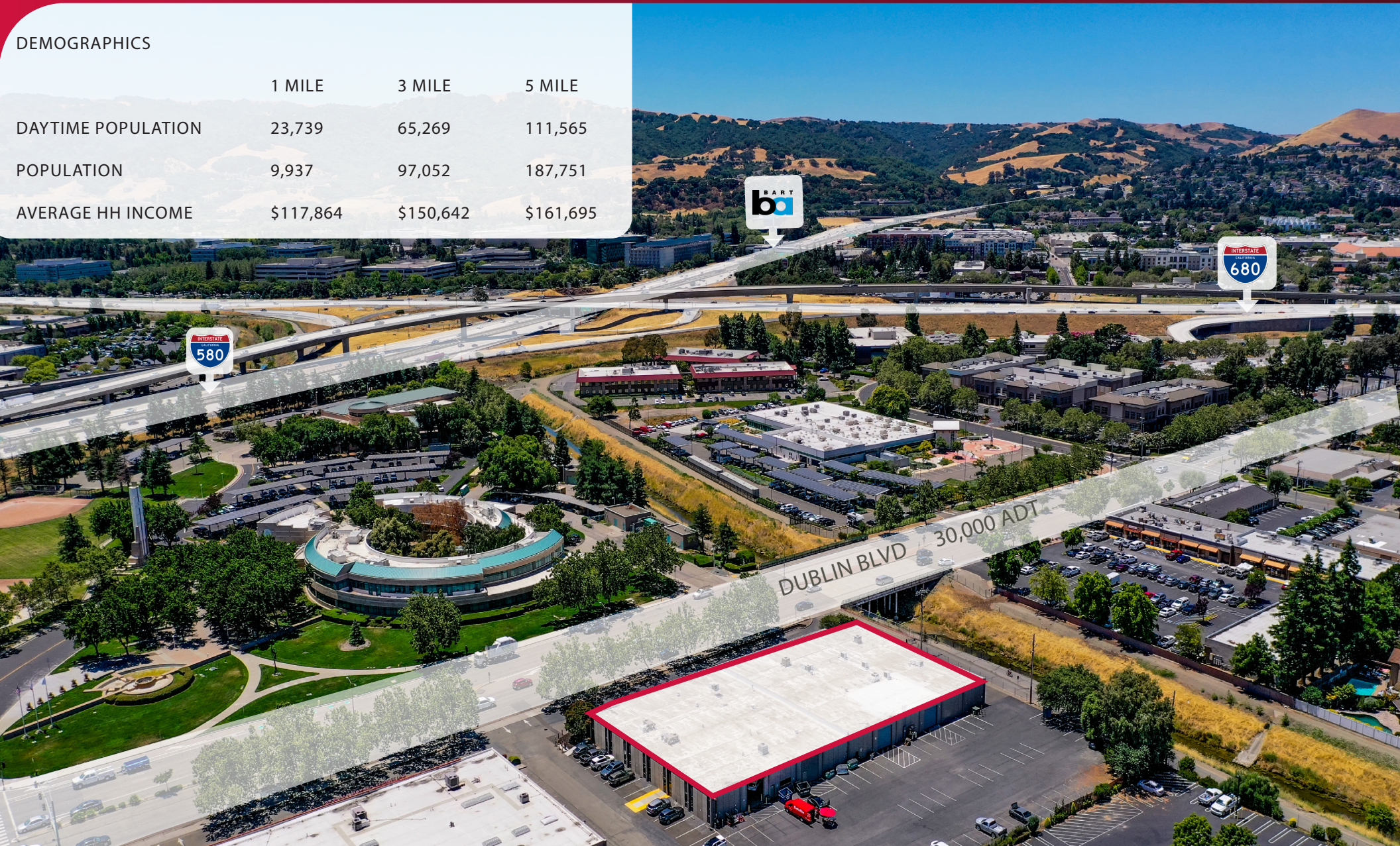


All information furnished by this office, property or sale agent, or financing from sources deemed reliable, but no warranty or representation is made as to the accuracy thereof. Some issues are limited to errors, omissions, change of price, rental or other conditions prior to sale, lease or financing or withdrawal, without notice. No liability is to be borne by the broker hereon.

FOR LEASE - 6849 DUBLIN BOULEVARD, DUBLIN, CA

DEMOGRAPHICS

	1 MILE	3 MILE	5 MILE
DAYTIME POPULATION	23,739	65,269	111,565
POPULATION	9,937	97,052	187,751
AVERAGE HH INCOME	\$117,864	\$150,642	\$161,695



JESSICA MAUSER
LIC.ID #01728720
jmauser@lee-associates.com
925.737.4168

SEAN OFFERS, SIOR
LIC.ID #01858116
soffers@lee-associates.com
925.737.4159

LEE & ASSOCIATES
COMMERCIAL REAL ESTATE SERVICES

LEE RETAIL
LEE & ASSOCIATES