

OFFICE SPACE FOR LEASE!

258 SE 6TH AVENUE, DELRAY BEACH, FL 33483

ONE SPACE LEFT!

1,600 SF AVAILABLE



THE PROPERTY

Great opportunity to lease an office space directly on Federal Hwy, just two blocks south of Atlantic Avenue in Downtown Delray Beach. Suite 3 is a first-floor office space with 1,600 SF.

Plenty of on-site parking and walking distance to Atlantic Avenue. This office also has a private bathroom in the suite and is available for immediate occupancy.

CONTACT INFORMATION:

GARY BROIDIS

(561) 703-9298

GARY@ATLANTICCG.COM

ATLANTIC

Commercial Group, Inc.®

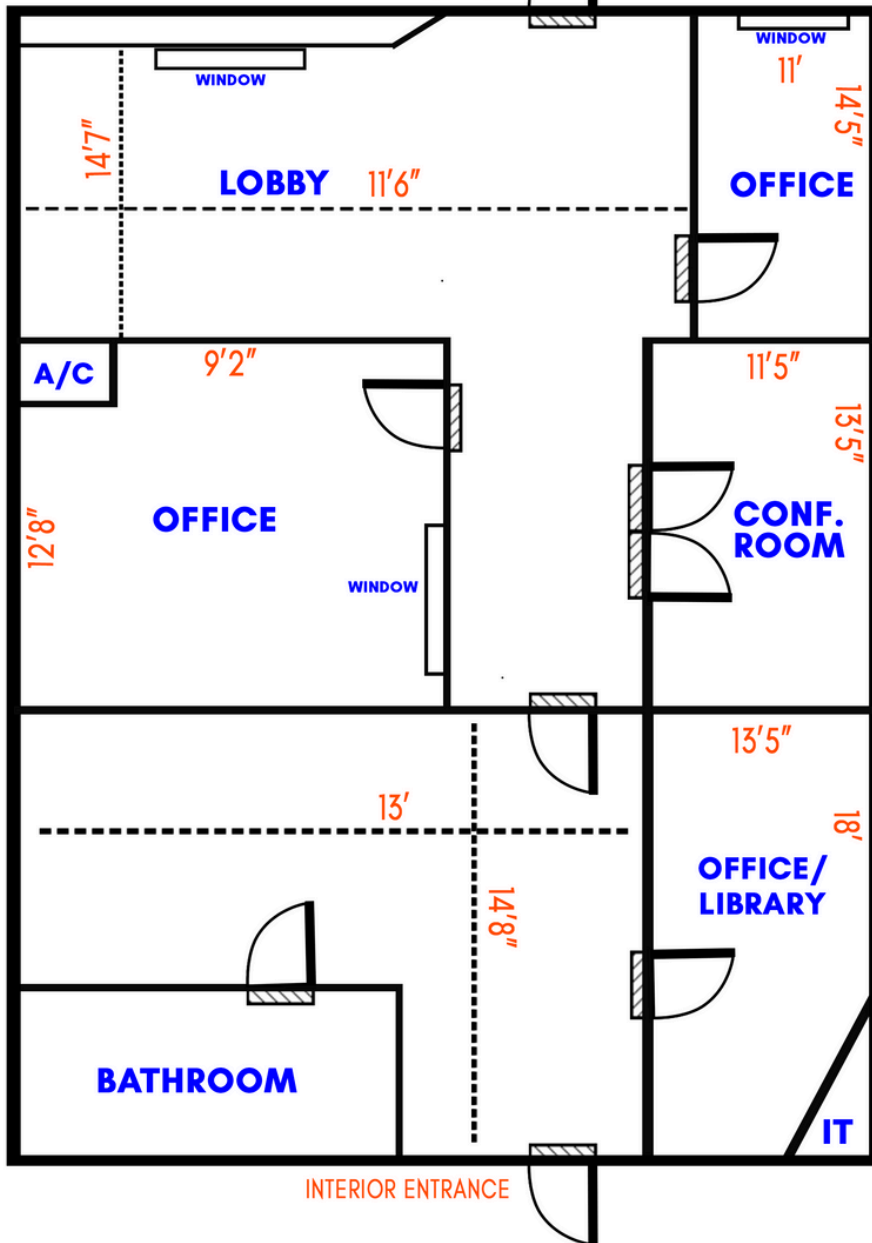
Licensed Real Estate Brokers

ATLANTICCG.COM

SUITE 3

1,600 SF

EXTERIOR ENTRANCE



HIGHLIGHTS

- \$25/SF Base Rent + \$15 OP Exp
- Direct Visibility on Federal Hwy (aka SE 6th Ave)
- Monument Signage Available
- Competitive Lease Rates

ATLANTIC

Commercial Group, Inc.®

Licensed Real Estate Brokers

ATLANTICCG.COM

GARY BROIDIS | 561-703-9298 | GARY@ATLANTICCG.COM