



EXECUTIVE SUMMARY

.5 AC OUTPARCEL FOR GROUND LEASE

176 NW CENTURION CT, LAKE CITY, FL 32055

**OFFERING SUMMARY**

Lease Rate:	Contact Broker for Pricing
Lot Size:	0.5 Acres
Zoning:	CHI
APN:	35-3S-16-02524-009

PROPERTY OVERVIEW

0.5-acre outparcel for Ground Lease in front of Denny's. Ideal for retail or a QSR development. Contact listing broker, Brad Parker or Trevor Shea, for more details.

LOCATION OVERVIEW

Located in a highly traveled retail corridor of Lake City, FL. Surrounded by numerous national and local retailers, restaurants, and hotels including Cracker Barrel, Texas Roadhouse, Chick-fil-A, and Hampton Inn. Conveniently positioned just off U.S. Highway 90 and less than a quarter mile from Interstate 75, offering excellent visibility and access to major traffic routes.

[Click Here for Zoning Information](#)

Brad Parker
850.566.2629
brad@tlgproperty.com

Trevor Shea
850.866.1132
trevor@tlgproperty.com

TLG REAL ESTATE SERVICES
3520 Thomasville Road, Suite 200, Tallahassee, FL 32309
850.385.6363

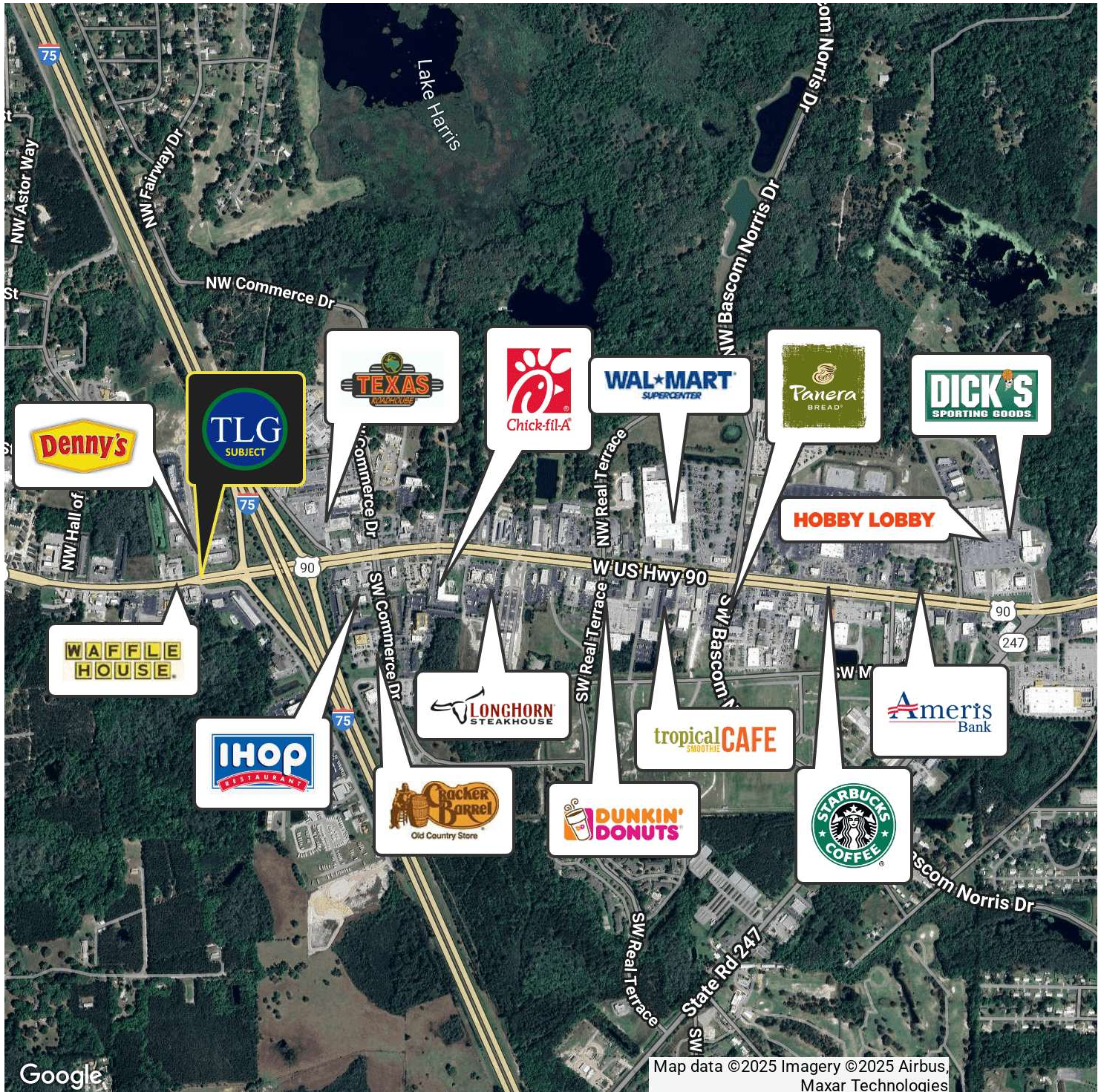




RETAILER MAP

.5 AC OUTPARCEL FOR GROUND LEASE

176 NW CENTURION CT, LAKE CITY, FL 32055



Brad Parker
850.566.2629
brad@tlgproperty.com

Trevor Shea
850.866.1132
trevor@tlgproperty.com

TLG REAL ESTATE SERVICES
3520 Thomasville Road, Suite 200, Tallahassee, FL 32309
850.385.6363

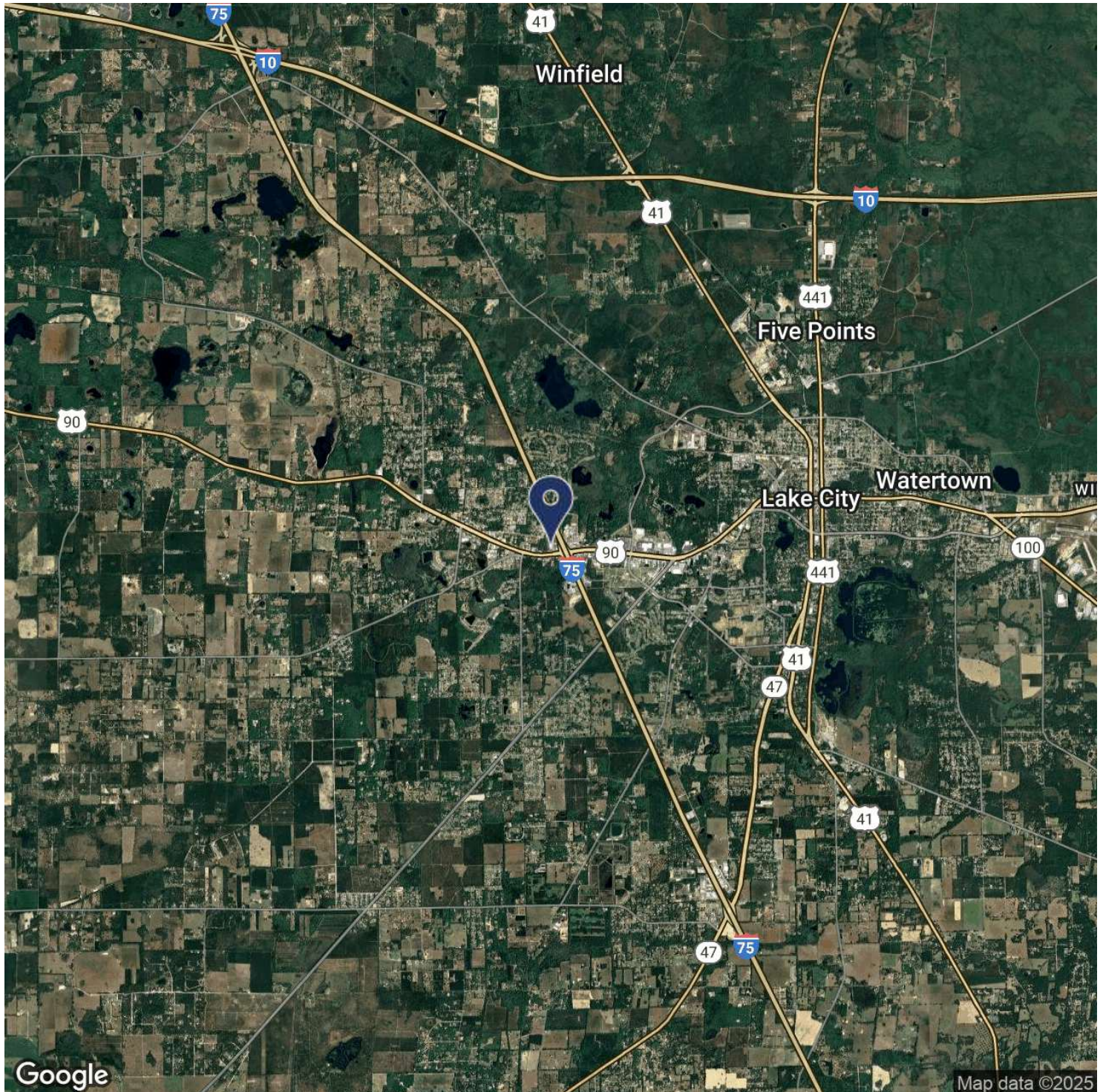




LOCATION MAP

.5 AC OUTPARCEL FOR GROUND LEASE

176 NW CENTURION CT, LAKE CITY, FL 32055



Brad Parker
850.566.2629
brad@tlgproperty.com

Trevor Shea
850.866.1132
trevor@tlgproperty.com

TLG REAL ESTATE SERVICES
3520 Thomasville Road, Suite 200, Tallahassee, FL 32309
850.385.6363

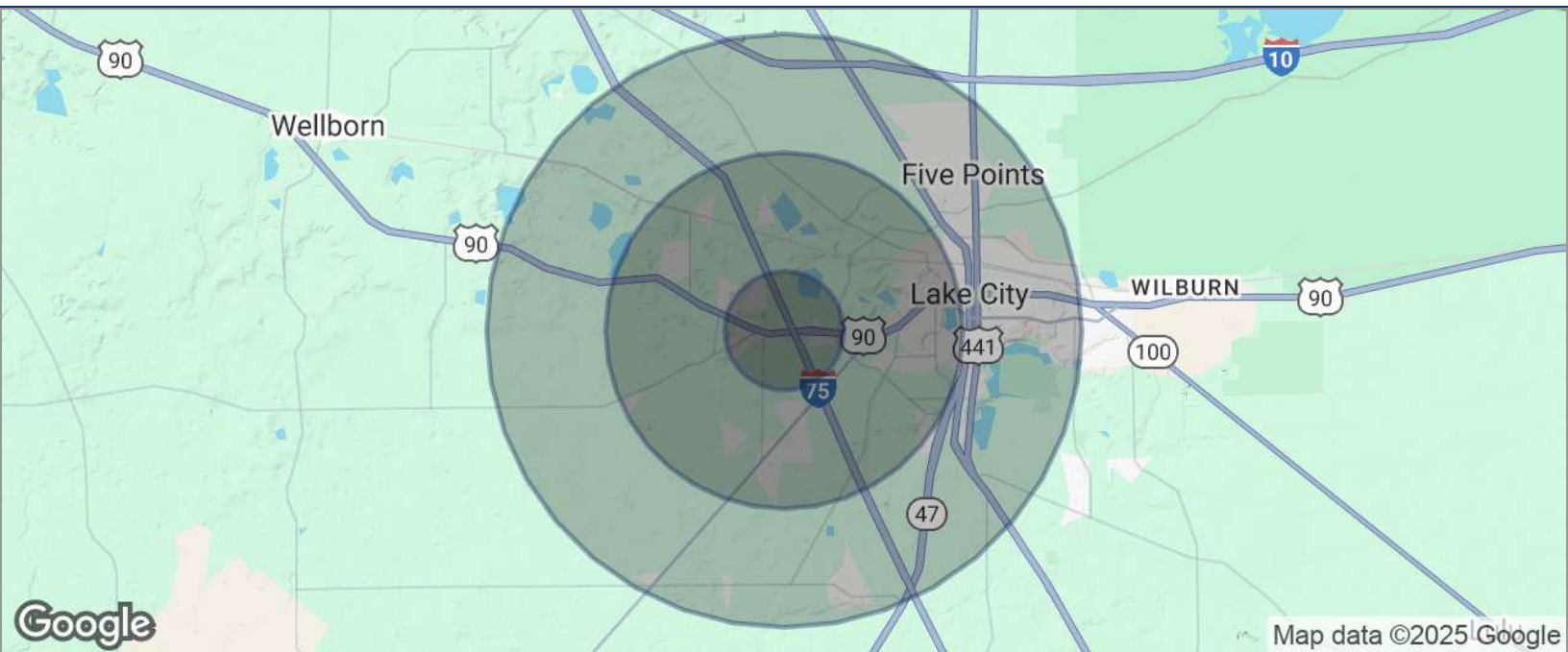




DEMOGRAPHICS MAP

.5 AC OUTPARCEL FOR GROUND LEASE

176 NW CENTURION CT, LAKE CITY, FL 32055



POPULATION	1 MILE	3 MILES	5 MILES
TOTAL POPULATION	2,348	16,332	34,039
MEDIAN AGE	41	42	42
MEDIAN AGE (MALE)	40	41	41
MEDIAN AGE (FEMALE)	42	43	43
HOUSEHOLDS & INCOME	1 MILE	3 MILES	5 MILES
TOTAL HOUSEHOLDS	926	6,432	13,286
# OF PERSONS PER HH	2.5	2.5	2.6
AVERAGE HH INCOME	\$80,541	\$81,354	\$79,448
AVERAGE HOUSE VALUE	\$284,797	\$281,954	\$256,178

* Demographic data derived from 2020 ACS - US Census

Brad Parker
850.566.2629
brad@tlgproperty.com

Trevor Shea
850.866.1132
trevor@tlgproperty.com

TLG REAL ESTATE SERVICES
3520 Thomasville Road, Suite 200, Tallahassee, FL 32309
850.385.6363

