

FLEX WAREHOUSE FOR LEASE

2305 Higgins Lane
Haltom City, Texas



Property Information

LOCATION

The property is located immediately south of 28th St., 1.5 miles to Hwy. 121, 2 miles to I-35 and 3.3 miles to Loop 820 N.

AVAILABLE SPACE

Unit 202 4,835 sq. ft.

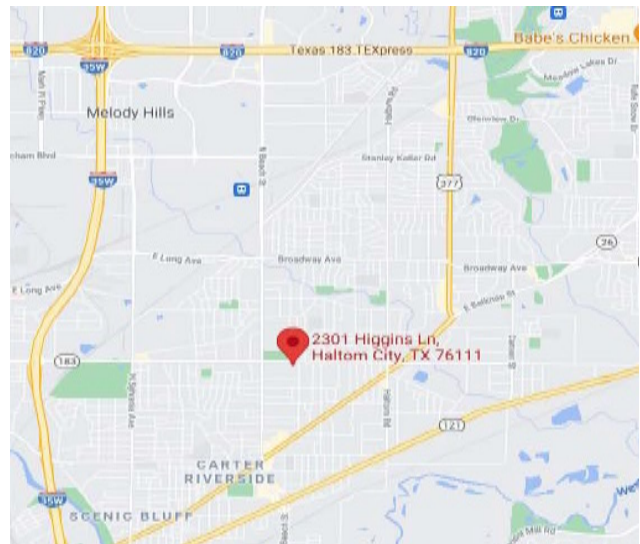
ZONING

"M-1" Industrial

COMMENTS

- Office 475 Sq. Ft.
- 12 ft. overhead doors on back
- 94' bay depth free span
- 15' side walls and 18.75' center
- 3 phase power
- Sprinkled building
- 2.5 per 1,000 parking

RATE \$10.50 Base Rate & \$2.75 in Triple Nets

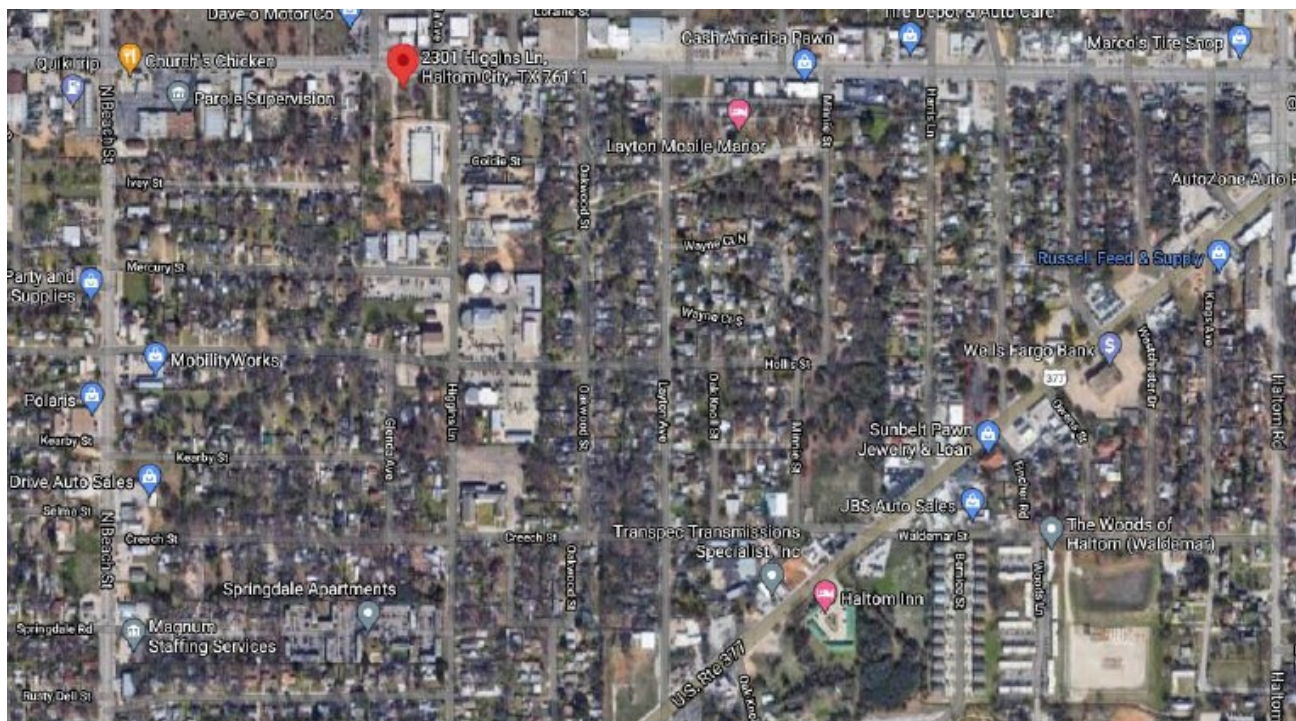
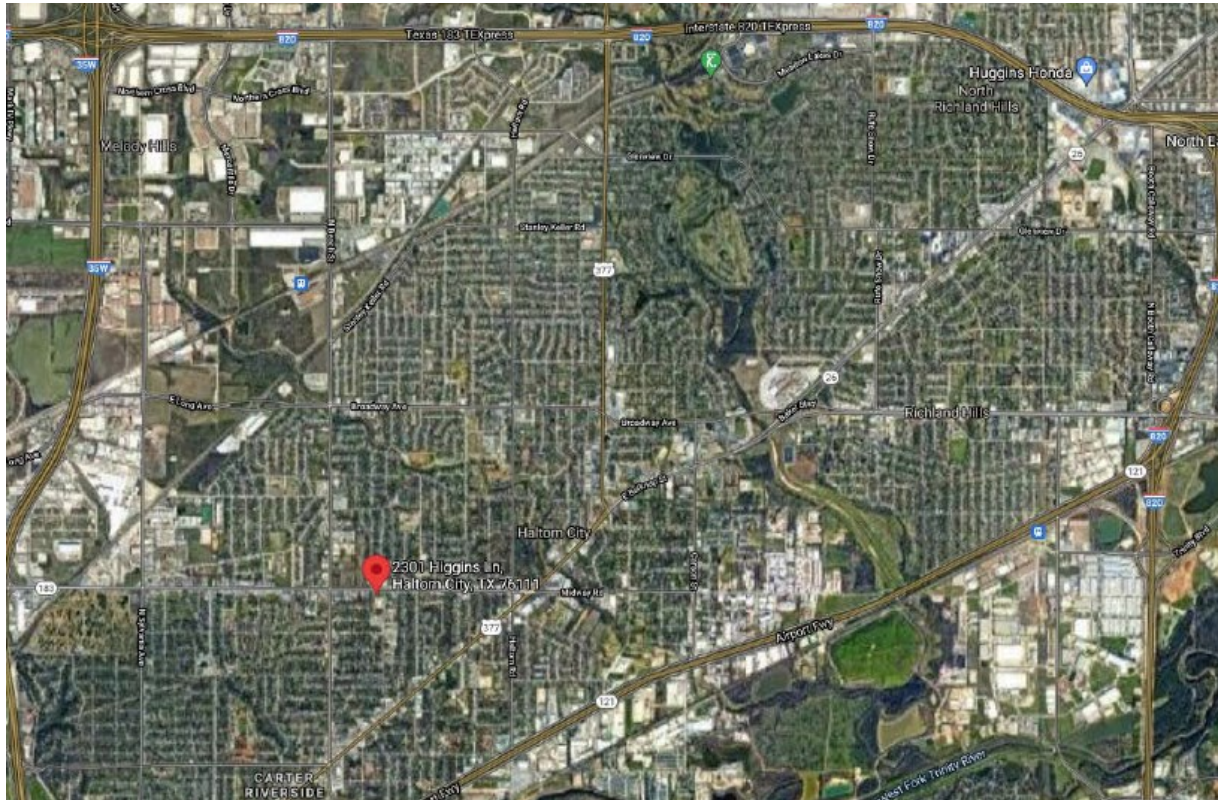


For Information

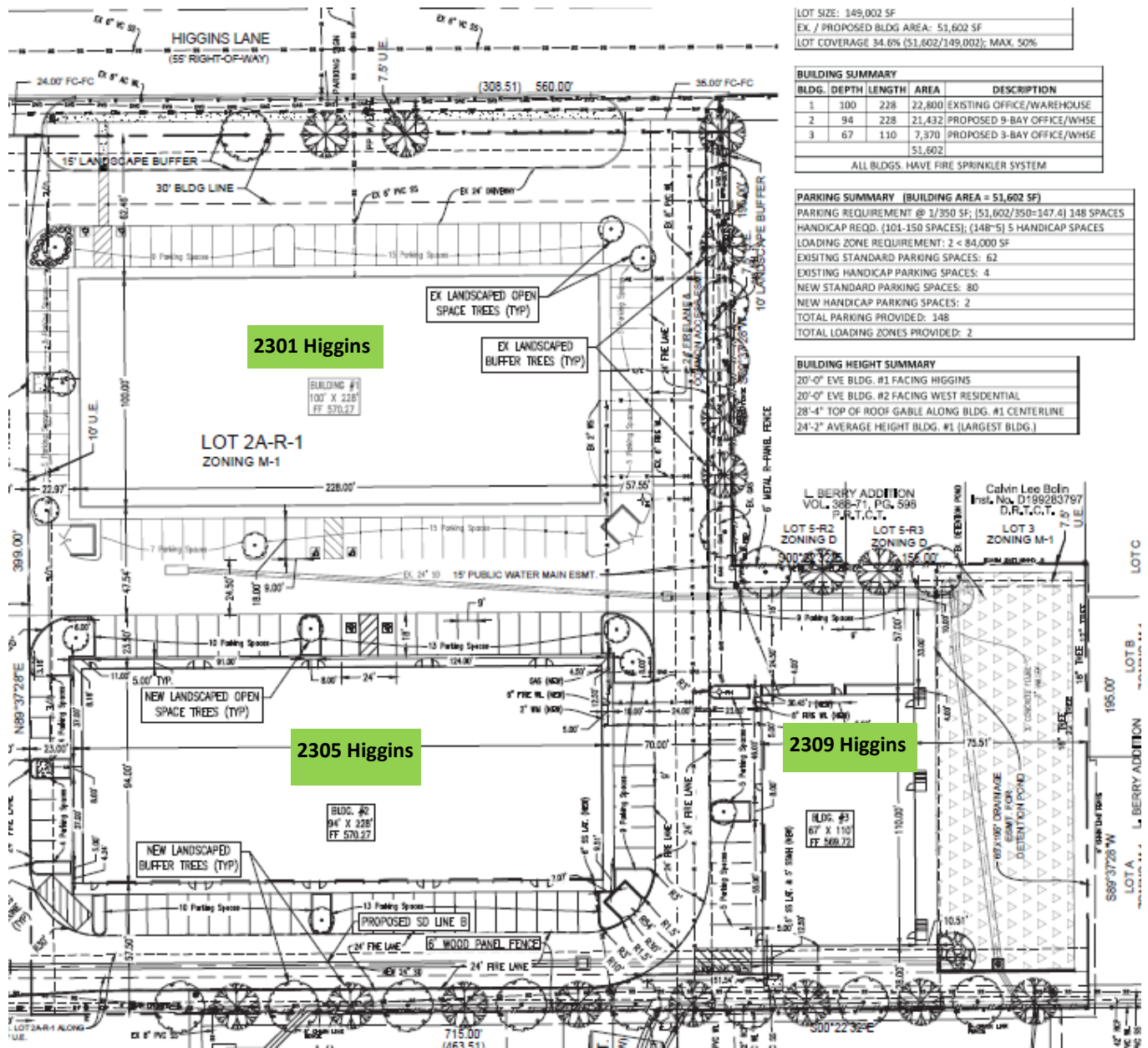
Don D. Phifer
817-427-9545 office
817-239-7100 cell
Phifer@LandDeals.com

FLEX WAREHOUSE FOR LEASE

2305 Higgins Lane
Haltom City, Texas



2305 Higgins Lane
Haltom City, Texas



FLEX WAREHOUSE FOR LEASE

2305 Higgins Lane
Haltom City, Texas

