

HIGH VISIBILITY OFFICE FOR LEASE

1224 66th Street N, St. Petersburg FL, 33710



Lease Rate:
\$20.00/SF MG

Debbie Reeser, Broker Associate
Debbie@cprteam.com (727) 244-8328
Frank Bozikovich, Sales Associate
Frank@cprteam.com (727) 501-2844

Highlights



984 - 3356 SF Office space Available
(can be demised to 2170 SF or 2372 SF)



Traffic Count - 38,800 AADT (2023)



44 dedicated, off-street parking spaces in front and rear of building



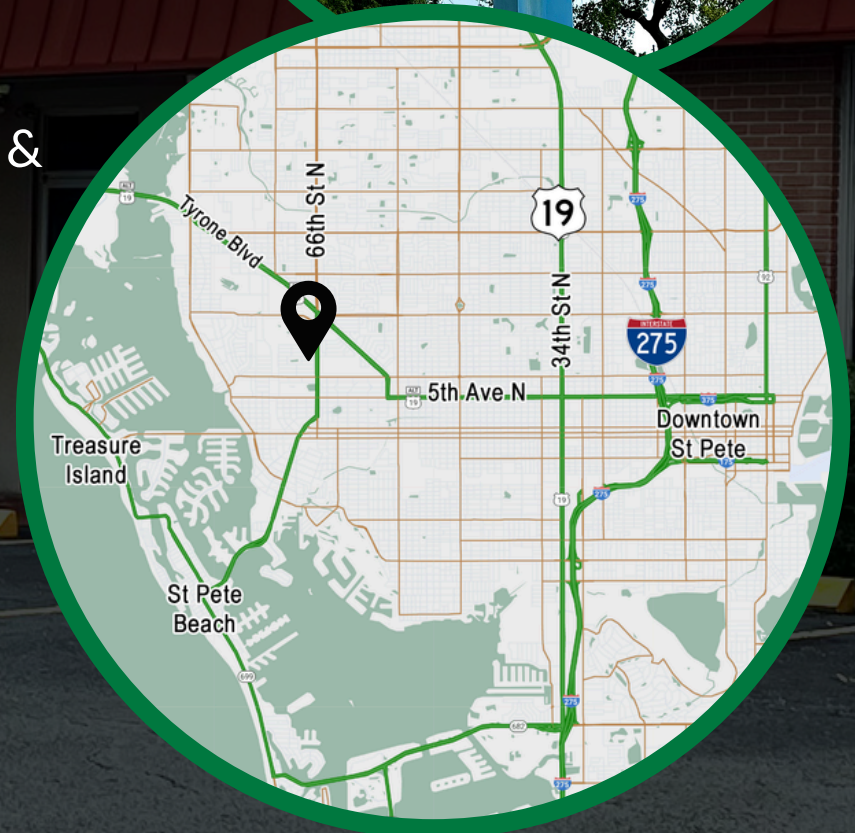
CRS-1 Zoning which allows for General & Medical Office, Health Club, Salon, Wellness Center, Day Spa



Pylon Signage Opportunity Available



Common area renovations, including exterior paint, are underway

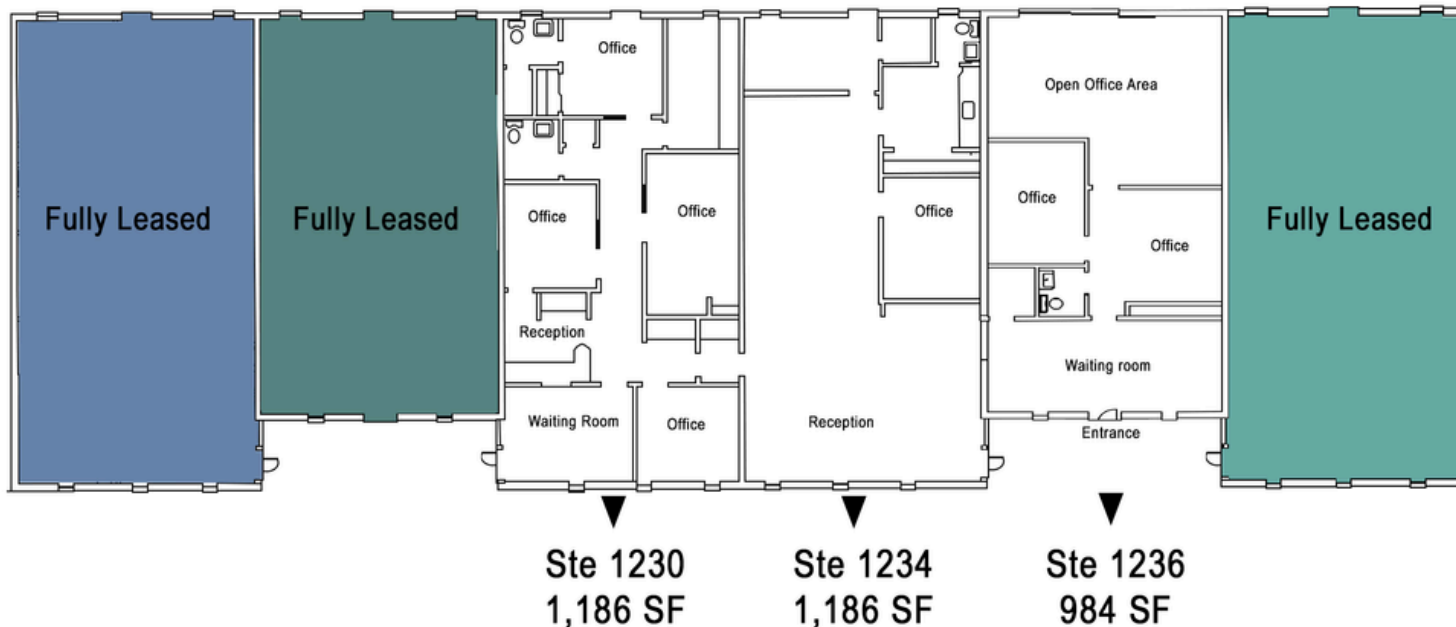




Property Description

Prime Tyrone Location on busy 66th Street North in the heart of Pinellas County with abundant parking and 24-hour access. Situated in a high visibility business corridor and surrounded by established residential neighborhoods, this desirable location will be convenient for clients and an asset to any business.

Available



1224 66th Street N,
St. Petersburg FL, 33710



Listing Team



Debbie Reeser
Broker Associate
Debbie@cprteam.com
(727) 244-8328



Frank Bozikovich
Sales Associate
Frank@cprteam.com
(727) 501-2844



www.cprteam.com



[727-822-4715](tel:727-822-4715)



[Commercial Partners Realty](#)