



# LOGAN COMMERCIAL DEVELOPMENT OPPORTUNITY

## PROPERTY HIGHLIGHTS

- Site Size: 13.16 Acres
- Parcel Number: 02-083-0002
- Zoning: Commercial (COM)
- Frontage: 1,243' on 1000 W
- AADT: 17,000 Vehicles per Day
- Sales Price: Please Contact Brokers

## DEMOGRAPHICS

Year	1 Mile	2 Mile	3 Mile
2020	5,451	38,537	79,290
2025	5,818	40,854	83,779
2030	6,354	44,564	91,098

**1800 S 1000 W**  
**LOGAN, UT 84321**



PRESENTED BY:



**HIGH BRIDGE**  
COMMERCIAL REAL ESTATE

**Rob Lindsey**

Principal Broker

801-941-1064

rob@highbridgecomre.com

**Brandon Lindsey**

Vice President

435-237-1750

brandon@highbridgecomre.com





## **EXECUTIVE SUMMARY**

Logan, UT - High Bridge Commercial is pleased to present the opportunity to purchase 13.16 acres of prime commercial land in Logan, Utah. The Property is situated in a high-growth area, near sprawling residential, both high-density Multi Family and Single Family. The Property benefits from the traffic on 1000 W and the proximity of major Cache Valley employers like Cytiva and Thermo Fisher Scientific, and iFit; each located directly to the east. The Property is zoned Commercial (COM). Please contact for pricing.



**HIGH BRIDGE**  
COMMERCIAL REAL ESTATE

**Rob Lindsey**

Principal Broker

801-941-1064

[rob@highbridgecomre.com](mailto:rob@highbridgecomre.com)

**Brandon Lindsey**

Vice President

435-237-1750

[brandon@highbridgecomre.com](mailto:brandon@highbridgecomre.com)



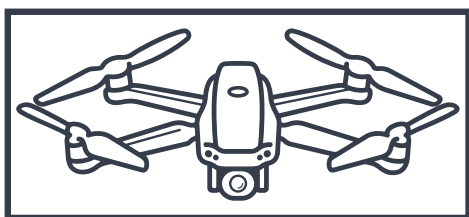
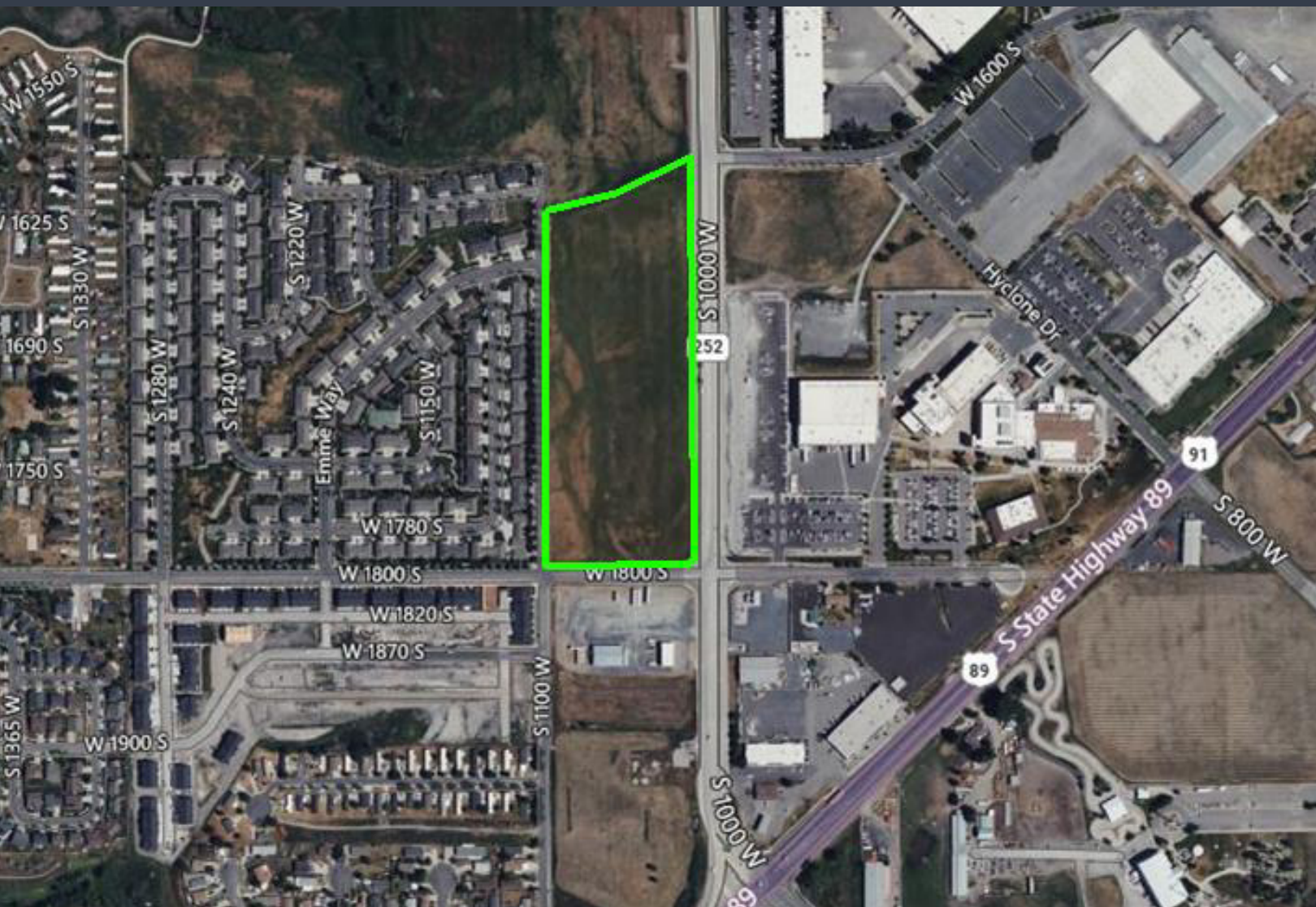


**HIGH BRIDGE**  
COMMERCIAL REAL ESTATE

# LOGAN COMMERCIAL DEVELOPMENT OPPORTUNITY

1800 S 1000 W LOGAN, UT 84321

## MAP



[View Drone Flyover](#)

**Rob Lindsey**

**Principal Broker**

801-941-1064

rob@highbridgecomre.com

**Brandon Lindsey**

**Vice President**

435-237-1750

brandon@highbridgecomre.com

No warranty or representation, express or implied, is made to the accuracy or completeness of the information contained herein, and same is submitted subject to errors, omissions, change of price, rental or other conditions, withdrawal without notice, and to any special listing conditions imposed by the property owner(s). As applicable, we make no representation as to the condition of the property (or properties) in question.