

FOR SALE

2645 MT. MORIAH RD. | MEMPHIS, TN 38115

Offering at \$1.4M

17,000 SF Building | 2+ Acres



GILL
PROPERTIES

8130 Macon Station, Suite 114
Memphis, TN 38018
(901) 758-1100



Frank Dyer III, CCIM, RPA

Senior VP of Brokerage
(C) 901.277.8183
(E) frank@gillprop.com



Barry Maynard

Senior VP of Brokerage
(C) 901.230.4265
(E) barry@gillprop.com

FOR SALE

COMMERCIAL RETAIL | INDUSTRIAL SPACE

2645 Mt. Moriah Rd., Memphis, TN 38115

PROPERTY HIGHLIGHTS

- Freestanding | Industrial Style | Retail Space
- 17,064 SF Building on 2.14 acres
- Iron Beam Ceiling
- Roof is in Excellent Condition
- Electric Security Fence surrounding entire perimeter.
- Sectional Steel Overhead Door
- Multiple Private Offices
- Ample Parking Spaces
- MONUMENT SIGNAGE

DEMOGRAPHICS

2023	1 Mile	3 Miles	5 Miles
Population	10,057	99,714	200,260
Households	3,831	38,638	78,278
Median HH Income	\$41,400	\$43,458	\$51,225



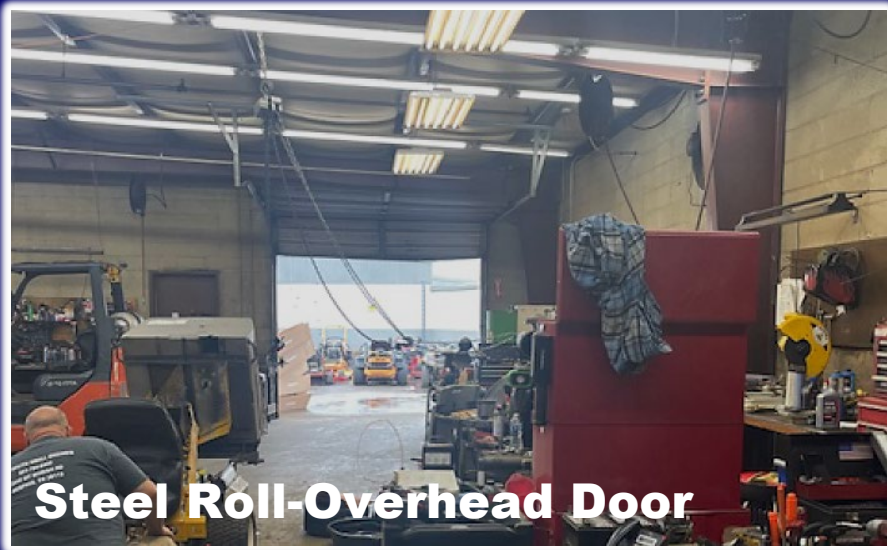
GILL
PROPERTIES

8130 Macon Station, Suite 114
Cordova, TN 38018
901.758.1100
www.GillProp.com

2645 Mt. Moriah Rd.
Memphis, TN 38115

STIHL





Steel Roll-Overhead Door



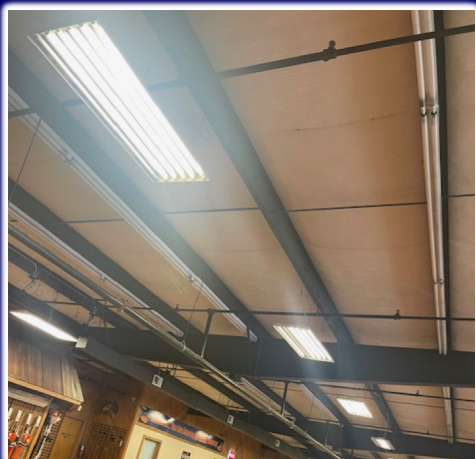
Retail Area



**Electric Fence
surrounding perimeter**



**Iron Beam
Ceiling**



**Monument
Signage**



**Multiple Private
Offices**

Aerial Site



An aerial map of a commercial site. A blue outline highlights a specific area. A blue arrow points to this area with the word "SITE" written in blue. A blue banner with a car icon and the text "33,200+ ADDT" is positioned near the highlighted area. The map includes logos for "CAR WASH USA EXPRESS", "MID SOUTH SMALL ENGINES STIHL", "CAR CORNER", "KIA", "Krystal", "enterprise", and "ExtraSpace Storage". A red car icon is placed on the map. The text "MT. MORIAH RD." is written along a road on the map. A small inset image shows a sign for "MID SOUTH SMALL ENGINES STIHL".

A HEAD FOR PROFITS
Trust Us for the Perfect Point

CONTACT INFORMATION:

GILL
PROPERTIES



FRANK DYER III, CCIM, RPA
Senior Vice President of Brokerage
(C) 901.277.8183
frank@gillprop.com



BARRY MAYNARD
Senior Vice President of Brokerage
(C) 901.230.4265
barry@gillprop.com