



## RENTAL RATES

\$14/mo

NNN (No Property Taxes)

## SPACES AVAILABLE

1,095-4,150 RSF

# NOW LEASING

115 S Jefferson, Spokane, WA 99201

## THE NO-JEFF BUILDING

*The Situated in the energetic west end of Downtown Spokane, 111 N Jefferson is surrounded by the city's brewery district, hip coffee shops, and unique local shopping. This walkable, creative neighborhood draws steady foot traffic and offers quick access to Riverfront Park and major downtown routes.*

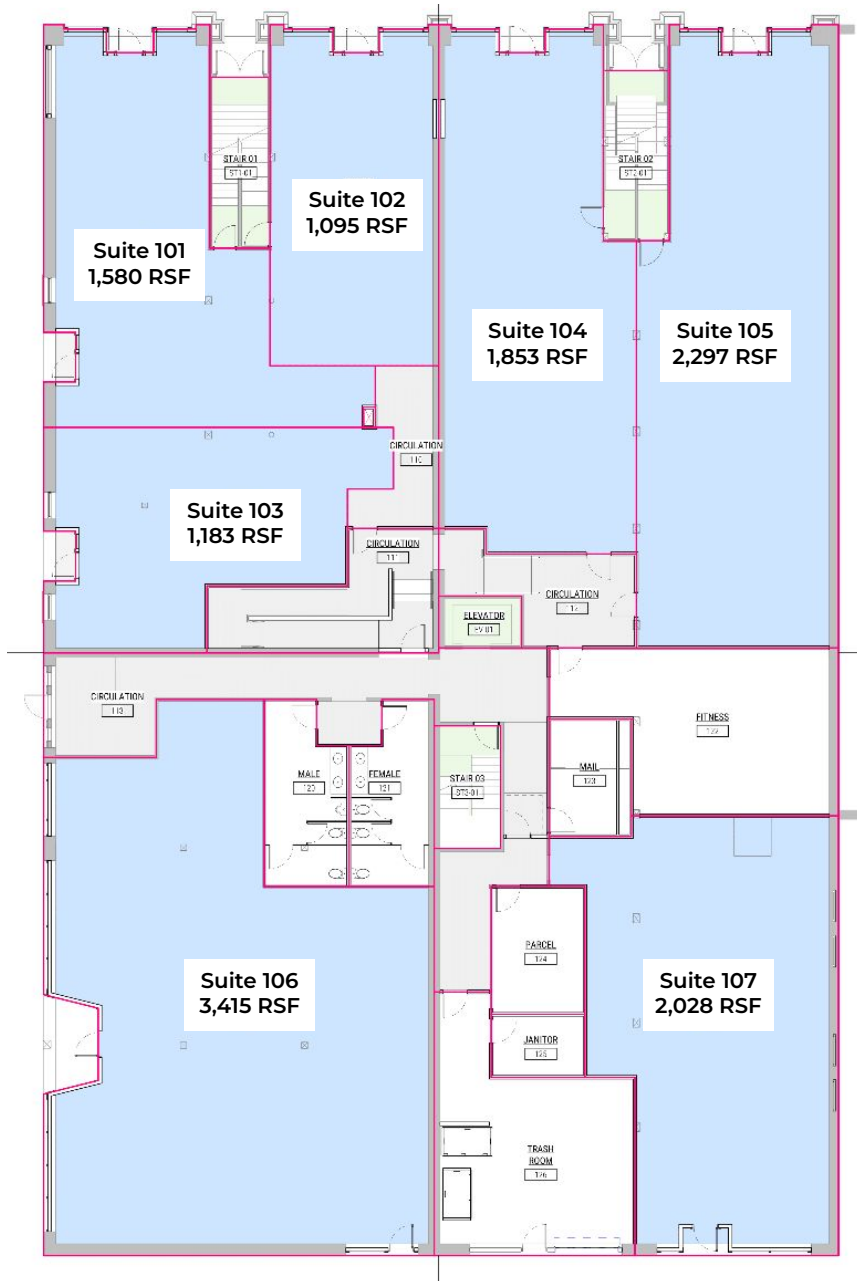
*This is a rare opportunity to build your dream space in a building undergoing a full overhaul, position your business in one of Spokane's most up-and-coming urban districts.*

✓ Centrally Located

✓ Fitness Club

✓ Construction to Begin Winter 2026,  
Occupancy Fall 2026

## FLOOR PLAN



**1,095-4,150 RSF**

**\$14/MO NNN**

TI Allowance \$60/SF