

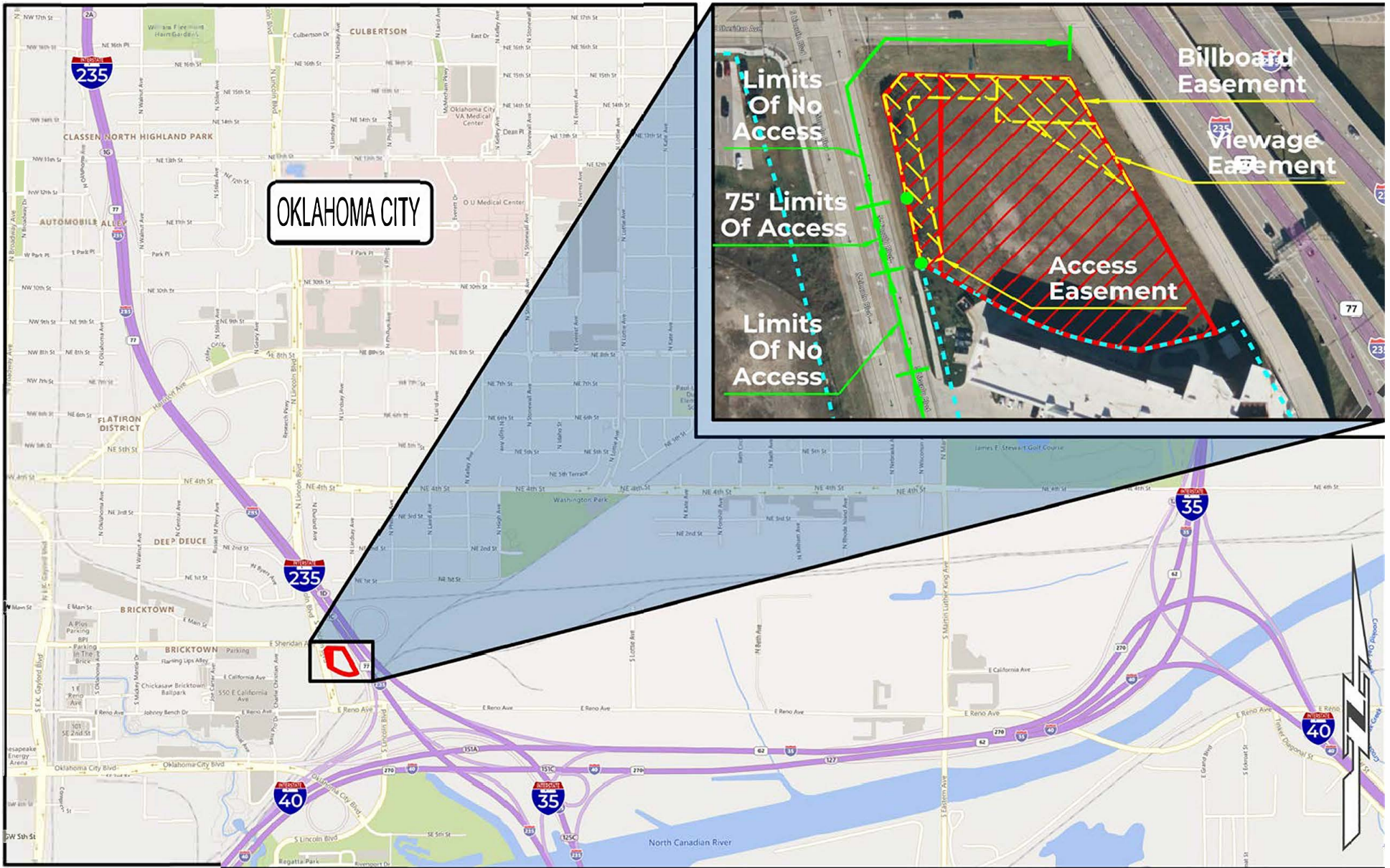
Limits of No Access
Existing Right-of-Way
Requested Area
Easement


OKLAHOMA
 Transportation

SURPLUS LOCATION MAP

I-235 | AA-55(5) & FAP-U-369(61) | Oklahoma County

Part of Parcel(s):	1 & 68
Price:	\$2,165,000.00
Size:	≈ 1.66 ac. (72,151.54 sq. ft.)



Limits of No Access
Existing Right-of-Way
Requested Area
Easement


OKLAHOMA
 Transportation

SURPLUS LOCATION MAP

I-235 | AA-55(5) & FAP-U-369(61) | Oklahoma County

Part of Parcel(s):	1 & 68
Price:	\$2,165,000.00
Size:	≈ 1.66 ac. (72,151.54 sq. ft.)