

# 1871 Woodslee Dr

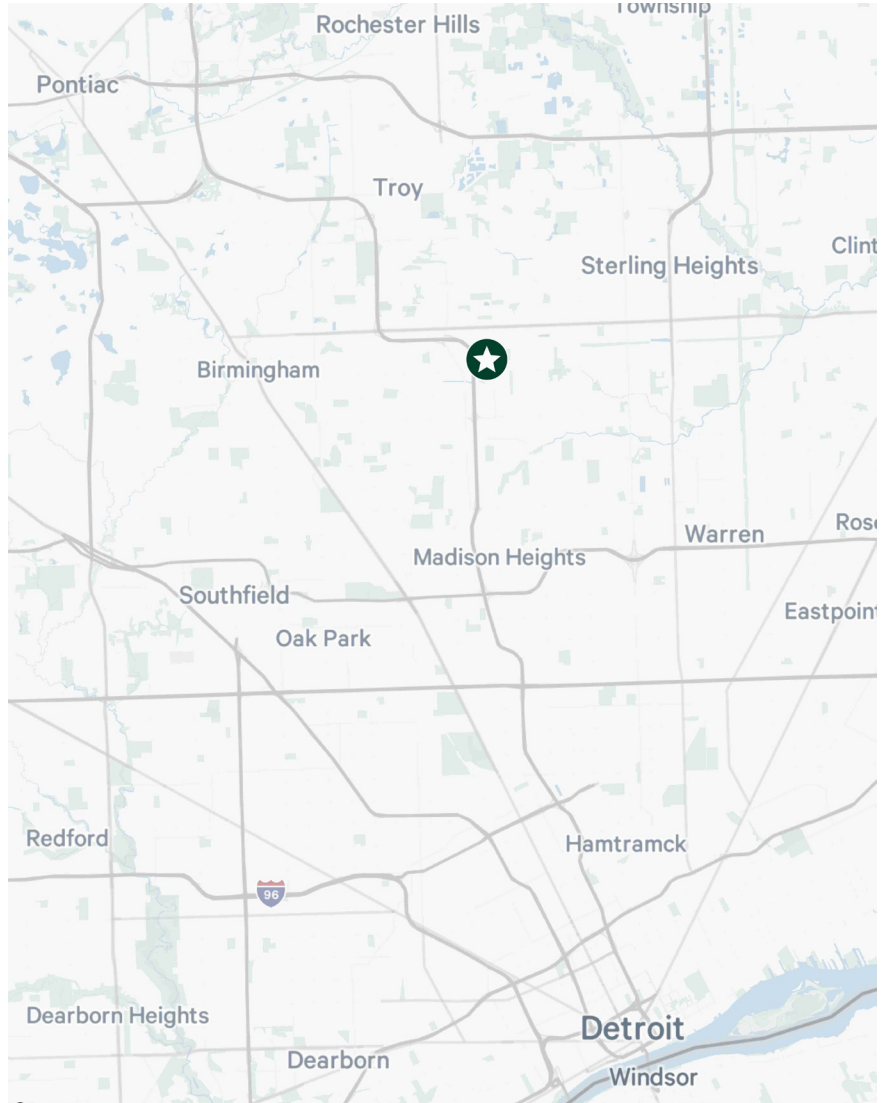
Troy, MI

15,937 Square Foot Building Available For Sale or Lease



# Property Overview

- + 15,937 Square Feet
  - ± 7,400 SF Office
  - ± 8,500 SF Warehouse
- + Three (3) 12'x14' Grade Level Doors
- + ± 16' Clear Height Throughout
- + Power: 1,000a/480v (TBV)
- + Parking: ± 55 Surface
- + Majority Air Conditioned
- + Fully Fire Suppressed
- + Zoning: IB
- + Sale Price: \$2,000,000
- + Lease Rate: \$10.25/SF NNN



## Contact Us

### Joe Kemp

Vice President  
+1 248 936 6892  
joe.kemp@cbre.com

### Matt Osiecki

First Vice President  
+1 248 351 2079  
matt.osiecki@cbre.com

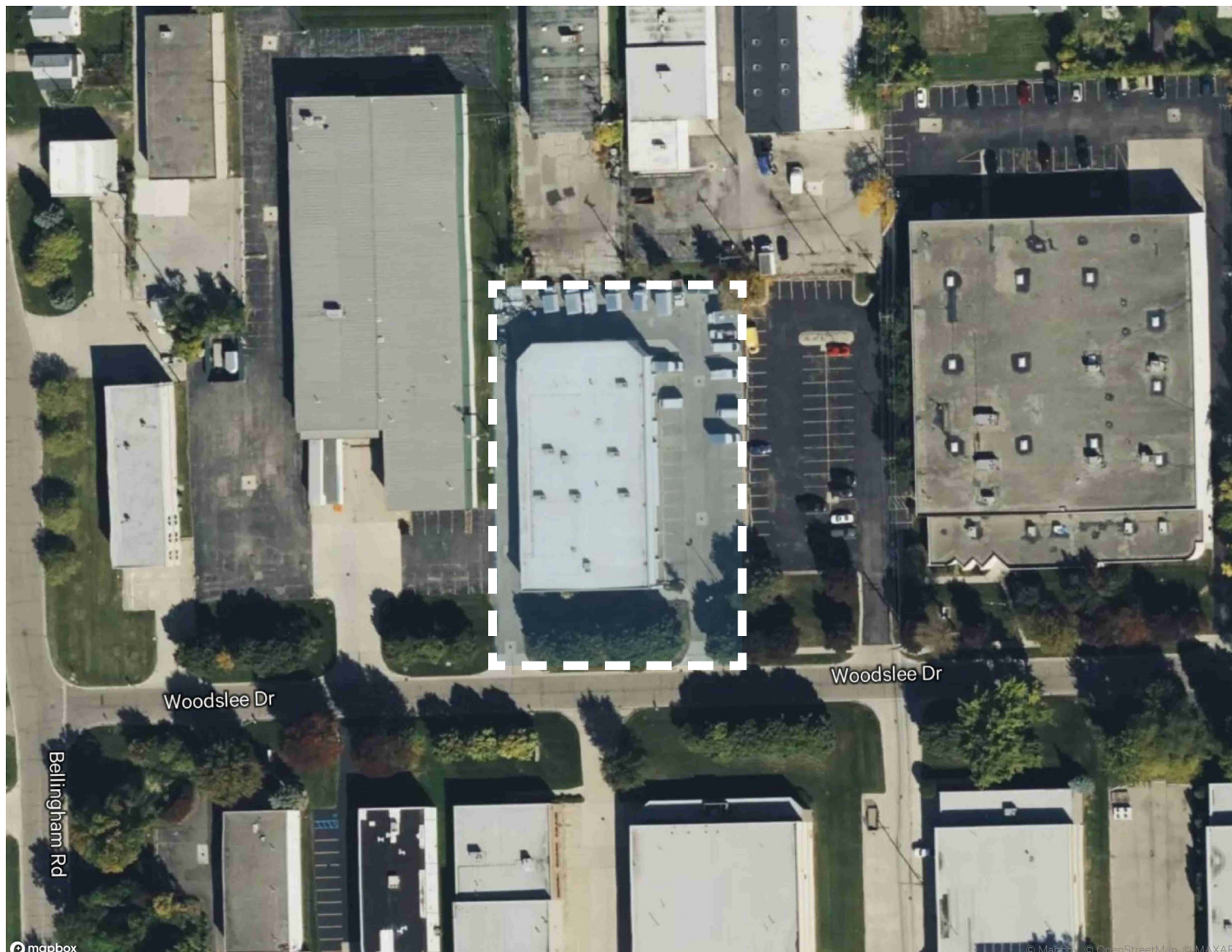
© 2026 CBRE, Inc. All rights reserved. This information has been obtained from sources believed reliable but has not been verified for accuracy or completeness. CBRE, Inc. makes no guarantee, representation or warranty and accepts no responsibility or liability as to the accuracy, completeness, or reliability of the information contained herein. You should conduct a careful, independent investigation of the property and verify all information. Any reliance on this information is solely at your own risk.



1871 Woodslee Dr  
Troy, MI

For Sale or Lease

# Aerial



## Contact Us

### Joe Kemp

Vice President

+1 248 936 6892

joe.kemp@cbre.com

### Matt Osiecki

First Vice President

+1 248 351 2079

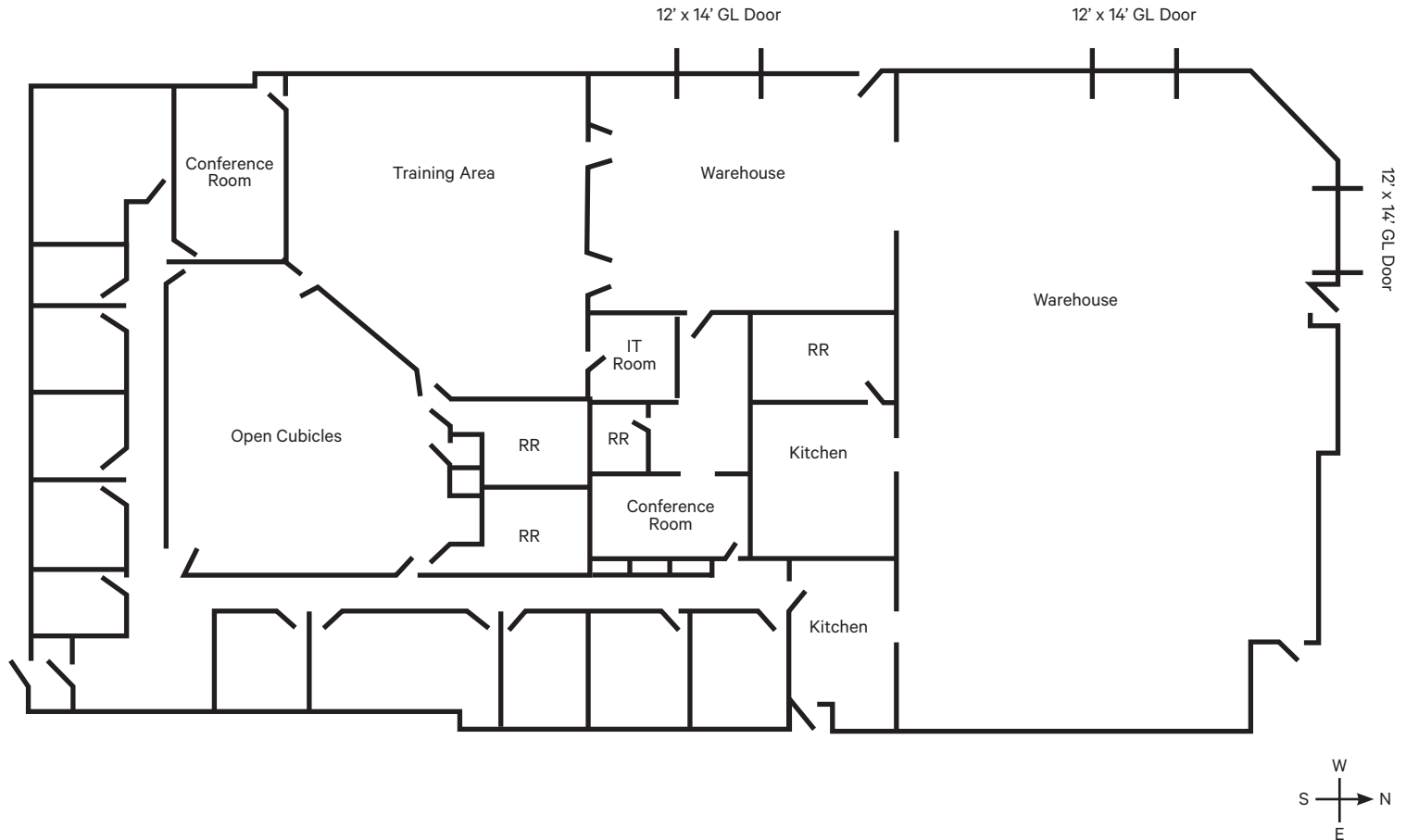
matt.osiecki@cbre.com

© 2026 CBRE, Inc. All rights reserved. This information has been obtained from sources believed reliable but has not been verified for accuracy or completeness. CBRE, Inc. makes no guarantee, representation or warranty and accepts no responsibility or liability as to the accuracy, completeness, or reliability of the information contained herein. You should conduct a careful, independent investigation of the property and verify all information. Any reliance on this information is solely at your own risk.

[www.cbre.com/detroit](http://www.cbre.com/detroit)

**CBRE**

# Aerial



## Contact Us

### Joe Kemp

Vice President  
+1 248 936 6892  
joe.kemp@cbre.com

### Matt Osiecki

First Vice President  
+1 248 351 2079  
matt.osiecki@cbre.com

© 2026 CBRE, Inc. All rights reserved. This information has been obtained from sources believed reliable but has not been verified for accuracy or completeness. CBRE, Inc. makes no guarantee, representation or warranty and accepts no responsibility or liability as to the accuracy, completeness, or reliability of the information contained herein. You should conduct a careful, independent investigation of the property and verify all information. Any reliance on this information is solely at your own risk.