

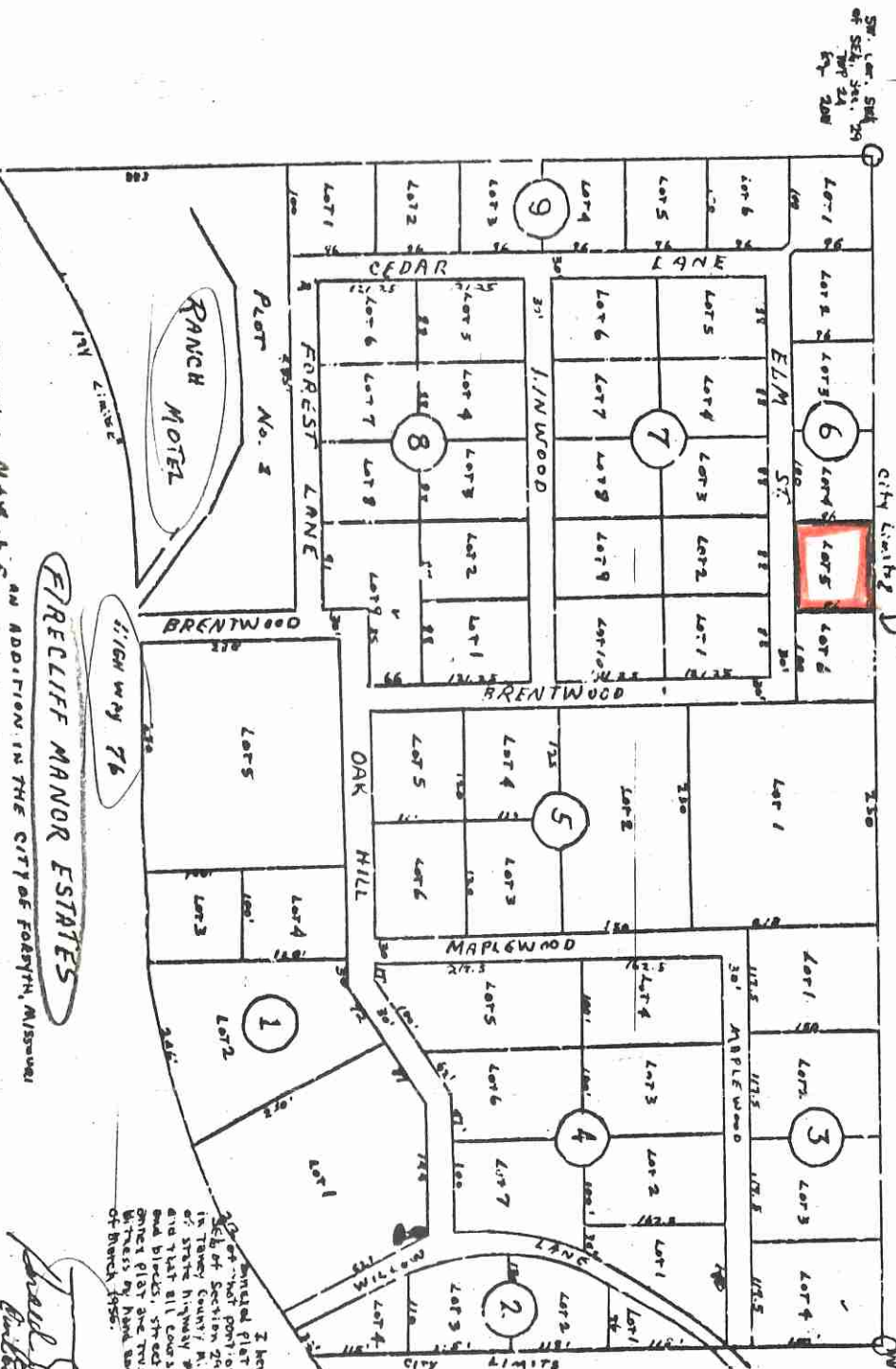
S.W. 1/4 Section 8-24-20

S.E. 1/4 Section 8-24-20

Filed for Record June 1, 1951. Ray Hill, Recorder

Ordinary certifying this is a true copy of the Original Plat

4175
City Lighting District 233



4175
City Lighting District 233

FREELIFF MANOR ESTATES

AN ADDITION IN THE CITY OF FORTY-NINTH, MISSOURI

I hereby certify that the attached plat conforms to my duplicate plat of Section 24, Twp 24, Range 24 in Taney County, Missouri, lying on the east side of State Highway 76 as now located, lots and that all courses and distances, lots and blocks, streets and lanes as shown on this plat are true and correct, witness my hand and seal this 4th day of March 1951.

Ray Hill
Recorder

I hereby certify that the attached plat conforms to my duplicate plat of Section 24, Twp 24, Range 24 in Taney County, Missouri, lying on the east side of State Highway 76 as now located, lots and blocks, streets and lanes as shown on this plat are true and correct, witness my hand and seal this 4th day of March 1951.

Ray Hill, Recorder