

Premium Vineyard

±251 Acres
Tulare County, CA

\$6,277,000

2 Sources of Water



- ❖ HUGE 461 Ac Ft of Lewis Creek Water Entitlement ±232.49 Ac ±16.58 Ac
- ❖ 2 Wells
- ❖ Rubi Reds.
- ❖ Pinto Grigio
- ❖ Farmhouse, Outbuildings and Corrals

Ronda Connolly
303-746-5040
RondaConnolly@gmail.com

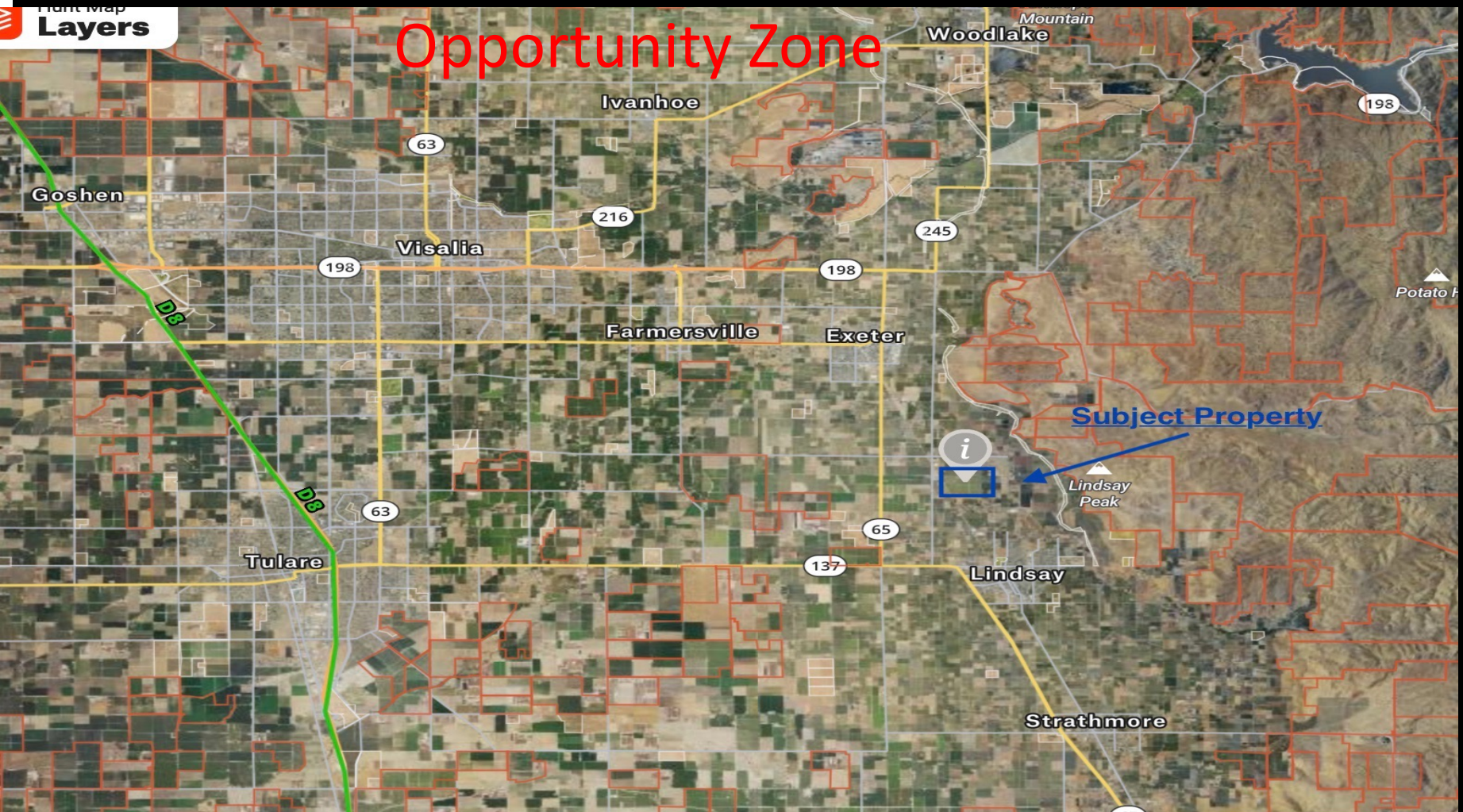


CA DRE # 02130675
Agent Is Related to Seller

Premium Vineyard

±251 Acres
Tulare County, CA

Sales Price:
\$6,277,000



Exclusively presented by:
Ronda Connolly
RondaConnolly@gmail.com :



CA DRE # 02130675
Agent Is Related to Seller

All information contained herein is deemed reliable but not guaranteed by seller nor broker and should be independently verified by potential buyers. We assume no liability for errors or omissions.

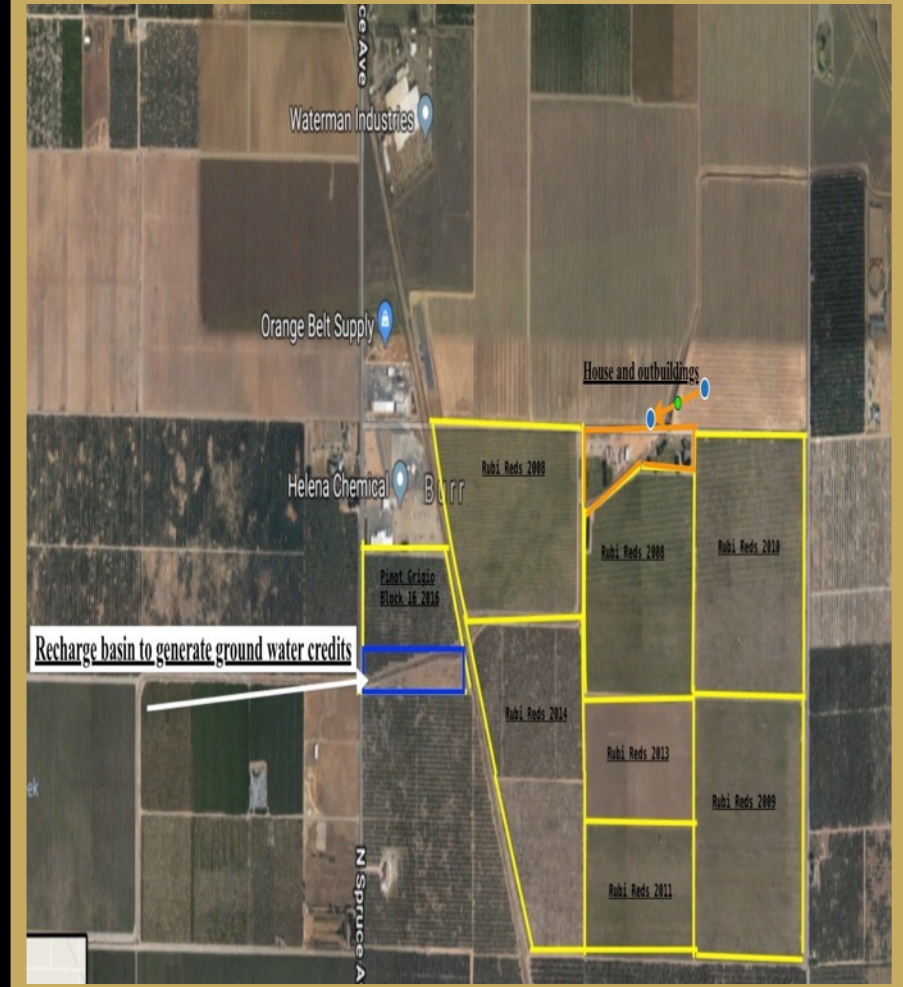
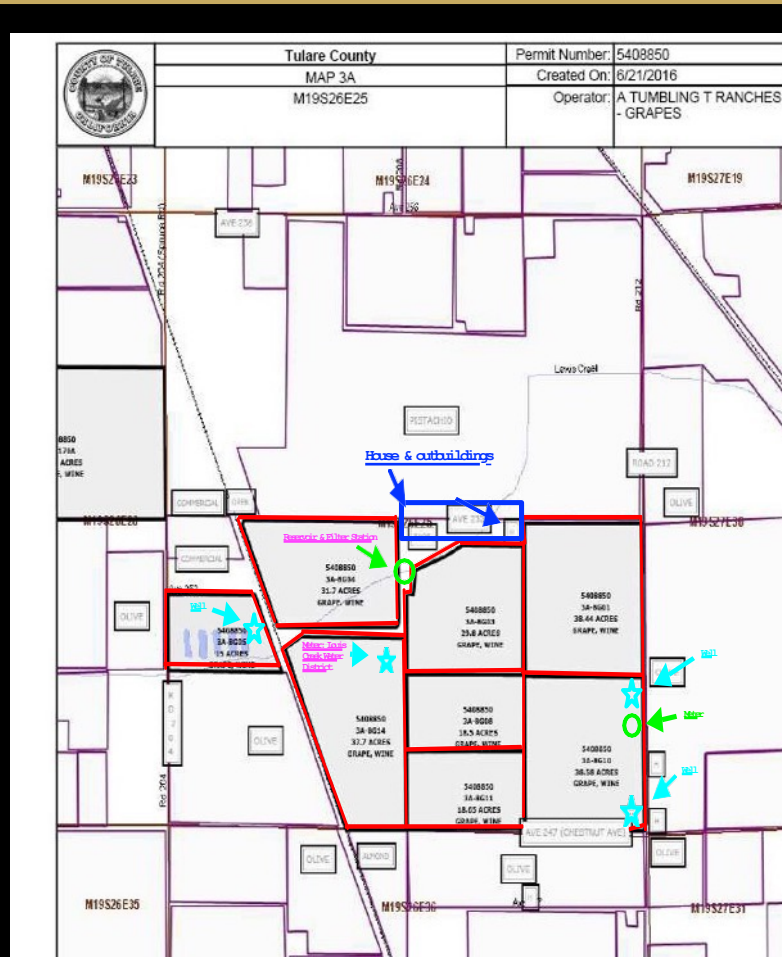
Premium Vineyard

±251 Acres
Tulare County, CA

Sales Price:
\$6,277,000

Assessor's Map

Planting Map



Exclusively presented by:
Ronda Connolly
RondaConnolly@gmail.com



CA DRE # 02130675
Agent Is Related to Seller

All information contained herein is deemed reliable but not guaranteed by seller nor broker and should be independently verified by potential buyers. We assume no liability for errors or omissions.

Premium Vineyard

±251 Acres
Tulare County, CA

Sales Price:
\$6,277,000

461 Ac Ft water entitlement from the Lewis Creek Irrigation District
2 Wells and 2 Filter stations
Railway Frontage
3 Bd 1Ba Farmhouse with corrals and outbuildings sitting on ~5 acres
Rubi Red and Pinot Grigio premium varieties Approximately 726 vines per
acre
Machine Harvested
Drip Irrigation
Steel Trellises
Retention Basin for generating ground water credits



Ronda Connolly GRI
Rise Realty DRE# 01957687
1902 Wright Place Ste 200
Carlsbad, CA 92008
RondaConnolly@gmail.com
RondaConnolly@yahoo.com

Mobile: (303) 746-5040

Office: (866)344-7473

CA DRE # 02130675

AZ DRE #: BR585141000

CO DRE # EA040044637

Exclusively presented by:



CA DRE # 02130675
Agent Is Related to Seller

All information contained herein is deemed reliable but not guaranteed by seller nor broker and should be independently verified by potential buyers. We assume no liability for errors or omissions.