



## Property Features

**204 West Newberry Road** offers 7,799 SF of office/flex space in Griffin Center, the premier business park in Northern Hartford County.

- 4/1,000 SF parking ratio
- Glass atrium entries
- Private restrooms
- Large, full-height windows
- Grade level loading
- Minutes from Bradley International Airport, I-84, I-91, and Downtown Hartford



**For further information, please contact:**

**Maury Smith** | D 860.327.8304 | C 860.748.2508 | [maury.smith@avisonyoung.com](mailto:maury.smith@avisonyoung.com)

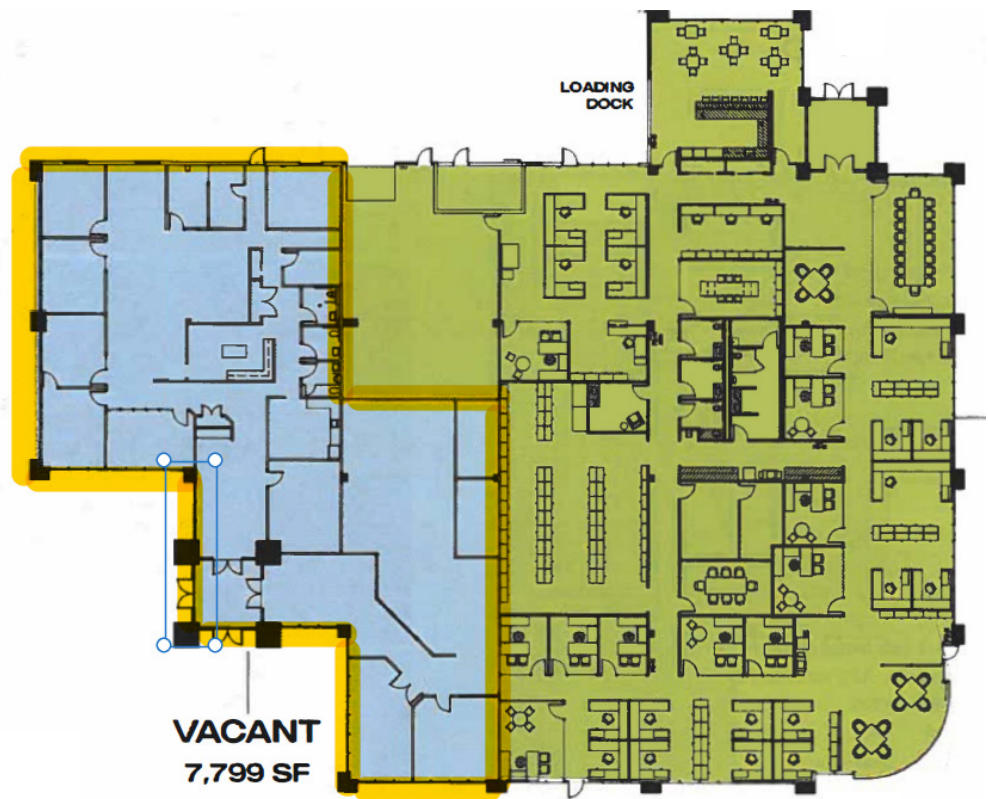
**Avison Young** | 225 Asylum Street, 16th Floor | Hartford, CT 06103 | T 860.327.8330

Owned by



# Property Details

- Building Size: 22,330 SF
- Available: 7,799 SF
- Year Built: 1988
- Exterior: brick fascia & glass
- Loading: 4 overhead doors
- Clear Height: 15' 0"
- Ceilings: 8' 6"
- HVAC: gas-fired rooftop units



**For further information, please contact:**

**Maury Smith** | D 860.327.8304 | C 860.748.2508 | [maury.smith@avisonyoung.com](mailto:maury.smith@avisonyoung.com)

**Avison Young** | 225 Asylum Street, 16th Floor | Hartford, CT 06103 | T 860.327.8330

