

# 14303

SULLYFIELD CIRCLE, CHANTILLY, VA 20151



## PROPERTY FEATURES (14303)

- Zoned I-5; Fairfax County
- 24' Clear Height
- Dock and Drive-In Loading
- 50'x50' Column Spacing
- Deep Truck Court

## LOCATION

- Intersection of Routes 28 and 50 in Chantilly, VA
- 5 Miles to Dulles Airport, Dulles Toll Road, and Route 66
- Surrounded by numerous shopping, dining, and hotel options

### FOR MORE INFORMATION, PLEASE CONTACT:

**Jon Lawrence**

+1 703 847 2787

jon.lawrence@cushwake.com

**Ed Zaptin**

+1 703 847 2730

ed.zaptin@cushwake.com

**Shane Keeton**

+1 434 249 1416

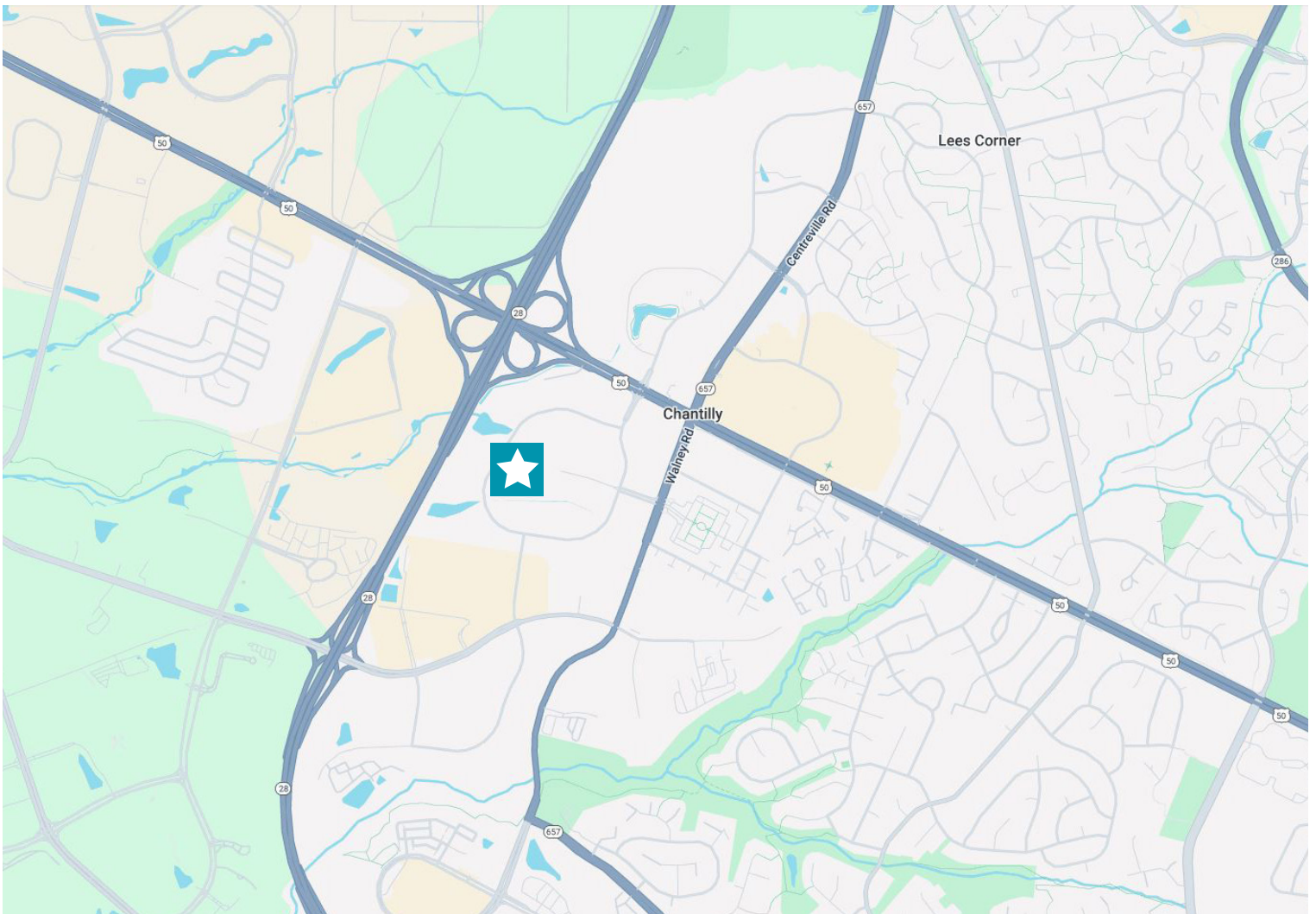
shane.keeton@cushwake.com



# 14303

SULLYFIELD CIRCLE, CHANTILLY, VA 20151

## LOCATION MAP



### FOR MORE INFORMATION, PLEASE CONTACT:

**Jon Lawrence**

+1 703 847 2787

[jon.lawrence@cushwake.com](mailto:jon.lawrence@cushwake.com)

**Ed Zaptin**

+1 703 847 2730

[ed.zaptin@cushwake.com](mailto:ed.zaptin@cushwake.com)

**Shane Keeton**

+1 434 249 1416

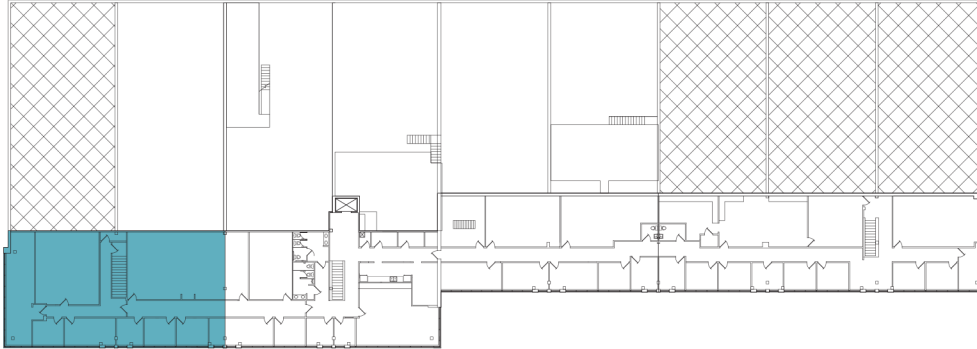
[shane.keeton@cushwake.com](mailto:shane.keeton@cushwake.com)



# 14303

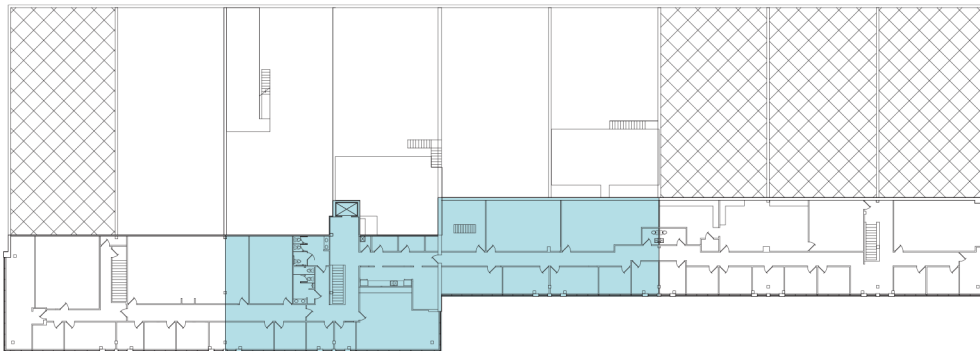
SULLYFIELD CIRCLE, CHANTILLY, VA 20151

## 14303 SULLYFIELD CIRCLE | T4



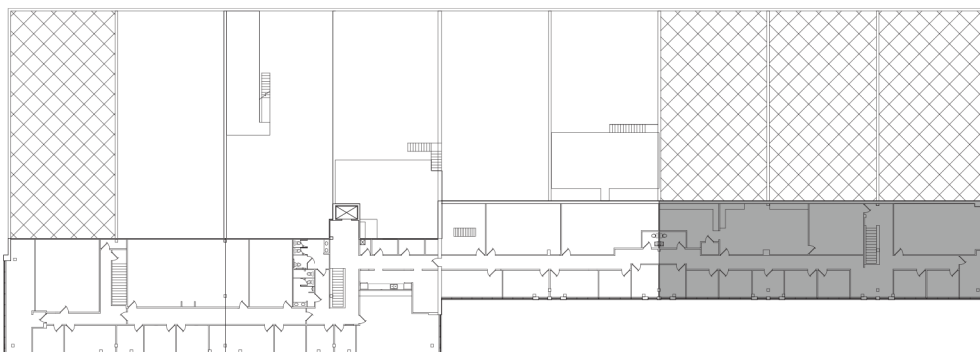
**T4**  
3,465 RSF

## 14303 SULLYFIELD CIRCLE | T5



**T5**  
6,434 RSF

## 14303 SULLYFIELD CIRCLE | T6



**T6**  
4,348 RSF

FOR MORE INFORMATION, PLEASE CONTACT:

**Jon Lawrence**  
+1 703 847 2787  
jon.lawrence@cushwake.com

**Ed Zaptin**  
+1 703 847 2730  
ed.zaptin@cushwake.com

**Shane Keeton**  
+1 434 249 1416  
shane.keeton@cushwake.com



©2024 Cushman & Wakefield. All rights reserved. The information contained in this communication is strictly confidential. This information has been obtained from sources believed to be reliable but has not been verified. NO WARRANTY OR REPRESENTATION, EXPRESS OR IMPLIED, IS MADE AS TO THE CONDITION OF THE PROPERTY (OR PROPERTIES) REFERENCED HEREIN OR AS TO THE ACCURACY OR COMPLETENESS OF THE INFORMATION CONTAINED HEREIN, AND SAME IS SUBMITTED SUBJECT TO ERRORS, OMISSIONS, CHANGE OF PRICE, RENTAL OR OTHER CONDITIONS, WITHDRAWAL WITHOUT NOTICE, AND TO ANY SPECIAL LISTING CONDITIONS IMPOSED BY THE PROPERTY OWNER(S). ANY PROJECTIONS, OPINIONS OR ESTIMATES ARE SUBJECT TO UNCERTAINTY AND DO NOT SIGNIFY CURRENT OR FUTURE PROPERTY PERFORMANCE.