



**GENESEE**  
COMMERCIAL  
GROUP, LLC

# FOR LEASE

MEDICAL/OFFICE

30940 STAGECOACH BLVD.  
Evergreen, Colorado 80439



## PROPERTY SPECIFICATIONS

Available:	Suite E-230	2,150 RSF
Lease Rate:		\$24.00/RSF FSG
Combined Building Size:		34,937 SF
Stories:		Two
Parking:		Abundant

### FOR MORE INFORMATION CONTACT:

**JAMIE MACBETH**

jmacbeth@gcgcre.com | 720.476.5229

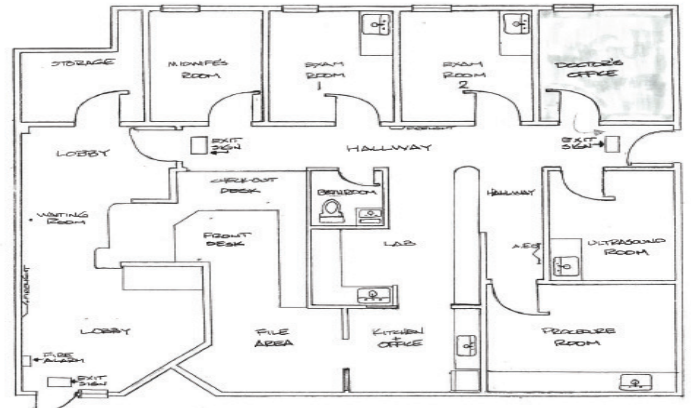
**RENÉE SPICER**

rspicer@gcgcre.com | 720.476.5226

## PROPERTY FEATURES

- Great North Evergreen location just off Evergreen Parkway
- Well maintained medical office complex
- Available immediately
- Join eight medical practices at Evergreen Medical Center

### Suite E-230 of 2,150 RSF



### FOR MORE INFORMATION CONTACT:

**JAMIE MACBETH**  
jmacbeth@gcgcre.com | 720.476.5229

**RENÉE SPICER**  
rspicer@gcgcre.com | 720.476.5226