

616 NW 124TH ST

616 NW 124th St, Oklahoma City, OK 73114

INDUSTRIAL PROPERTY FOR LEASE



PROPERTY DESCRIPTION

This building offers two suites, each 75' x 75' clear-span. The warehouse is heated and well lit. 110v outlets are distributed as well as two 220v outlets. Bathrooms are finished and office space will be constructed as needed. The warehouse is well insulated and interiors are finished with painted r-panel for a fresh and clean aesthetic.

LOCATION DESCRIPTION

Located near Chisolm Creek, this location offers convenient access to major transportation routes, I-235 and the Kilpatrick Turnpike. The nearby thriving business community is complemented by a range of dining options, shopping centers, and hotels, ensuring all the amenities your staff may need are close at hand.

PROPERTY HIGHLIGHTS

- Office space may be constructed on as needed basis
- Negotiable lease terms
- 18' clear height
- Easy access to Kilpatrick Turnpike, Hefner Parkway, I-235 and I-44

OFFERING SUMMARY

LEASE RATE:	\$12 SF/yr (NNN)
EST. NNN	\$2.80 SF/yr
NUMBER OF UNITS:	2
AVAILABLE SF:	5,625 SF
LOT SIZE:	33,032 SF
BUILDING SIZE:	11,250 SF

Ian Duty-Dean

Managing Broker

405.928.6210

ian@greyhound.group



This information has been obtained from sources believed reliable. The Greyhound Group has not verified it and makes no guarantee, warranty or representation about it. Any projections, opinions, assumptions, or estimates used are for example only and do not represent the current or future performance of the property. You and your advisors should conduct a careful, independent investigation of the property to determine to your satisfaction the suitability of the property for your needs.

616 NW 124TH ST

616 NW 124th St, Oklahoma City, OK 73114

INDUSTRIAL PROPERTY FOR LEASE



Ian Duty-Dean
Managing Broker
405.928.6210
ian@greyhound.group

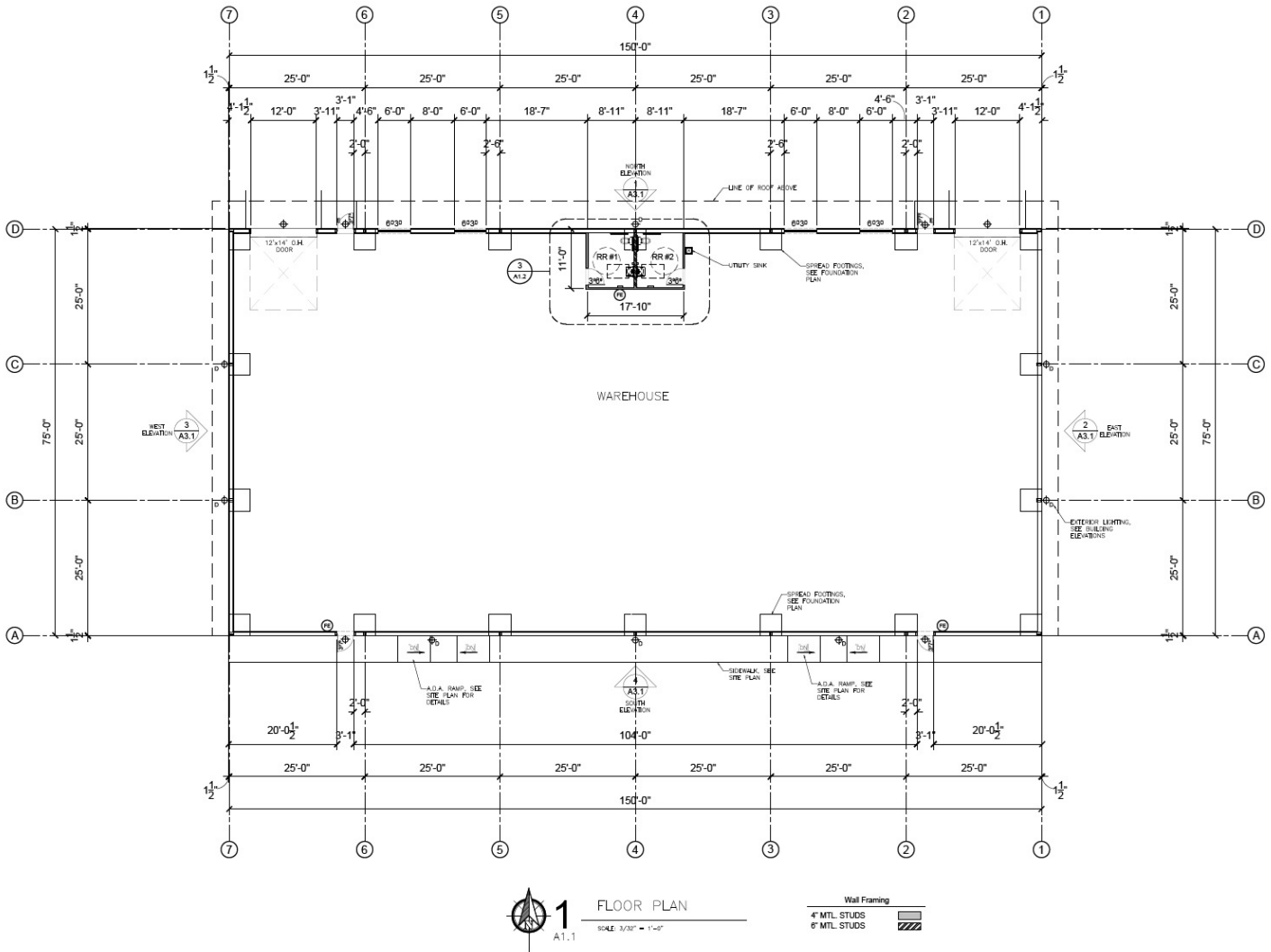


This information has been obtained from sources believed reliable. The Greyhound Group has not verified it and makes no guarantee, warranty or representation about it. Any projections, opinions, assumptions, or estimates used are for example only and do not represent the current or future performance of the property. You and your advisors should conduct a careful, independent investigation of the property to determine to your satisfaction the suitability of the property for your needs.

616 NW 124TH ST

616 NW 124th St, Oklahoma City, OK 73114

INDUSTRIAL PROPERTY FOR LEASE



Ian Duty-Dean
Managing Broker
405.928.6210
ian@greyhoundgroup

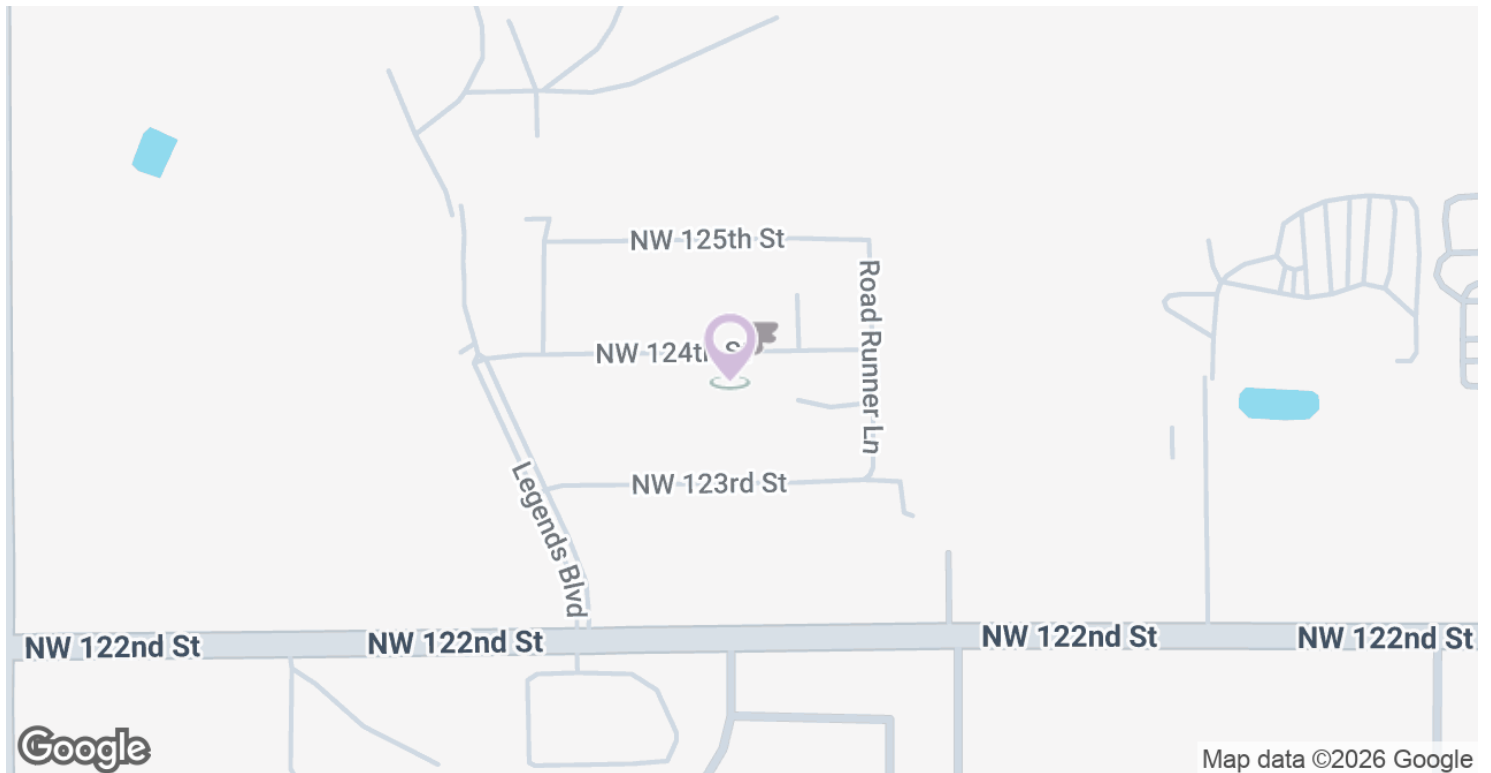
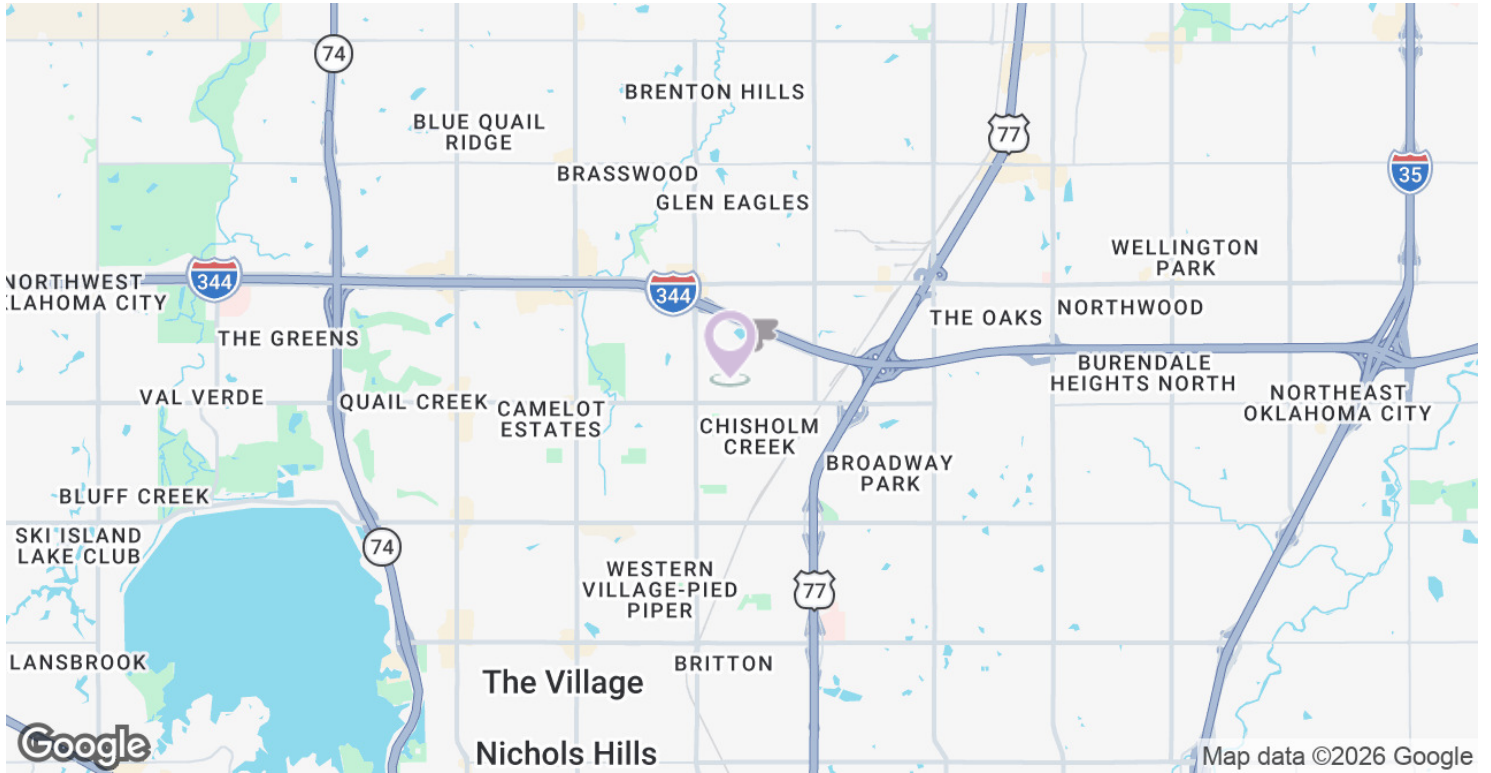


This information has been obtained from sources believed reliable. The Greyhound Group has not verified it and makes no guarantee, warranty or representation about it. Any projections, opinions, assumptions, or estimates used are for example only and do not represent the current or future performance of the property. You and your advisors should conduct a careful, independent investigation of the property to determine to your satisfaction the suitability of the property for your needs.

616 NW 124TH ST

616 NW 124th St, Oklahoma City, OK 73114

INDUSTRIAL PROPERTY FOR LEASE



Ian Duty-Dean
Managing Broker
405.928.6210
ian@greyhound.group



This information has been obtained from sources believed reliable. The Greyhound Group has not verified it and makes no guarantee, warranty or representation about it. Any projections, opinions, assumptions, or estimates used are for example only and do not represent the current or future performance of the property. You and your advisors should conduct a careful, independent investigation of the property to determine to your satisfaction the suitability of the property for your needs.