

This information has been secured from sources we believe are reliable, but we make no representations or warranties, expressed or implied, as to the accuracy of the information. References to condition, square footage or age are approximate. Buyer or Tenant acknowledges that they are relying on their own investigations and are not relying on provided reference information.

EUCLID AVENUE

TRUMAN BUILDING

7450 SF (TOTAL)
SPEC. RETAIL

1104

9980 SF
SPEC. RETAIL

1112

CLEVELAND ATHLETIC CLUB BUILDING

LOBBY

SERVICE CORRIDOR

BARN COURT



1104 EUCLID AVENUE
CLEVELAND, OHIO 44115

SECURITY FED. BUILDING



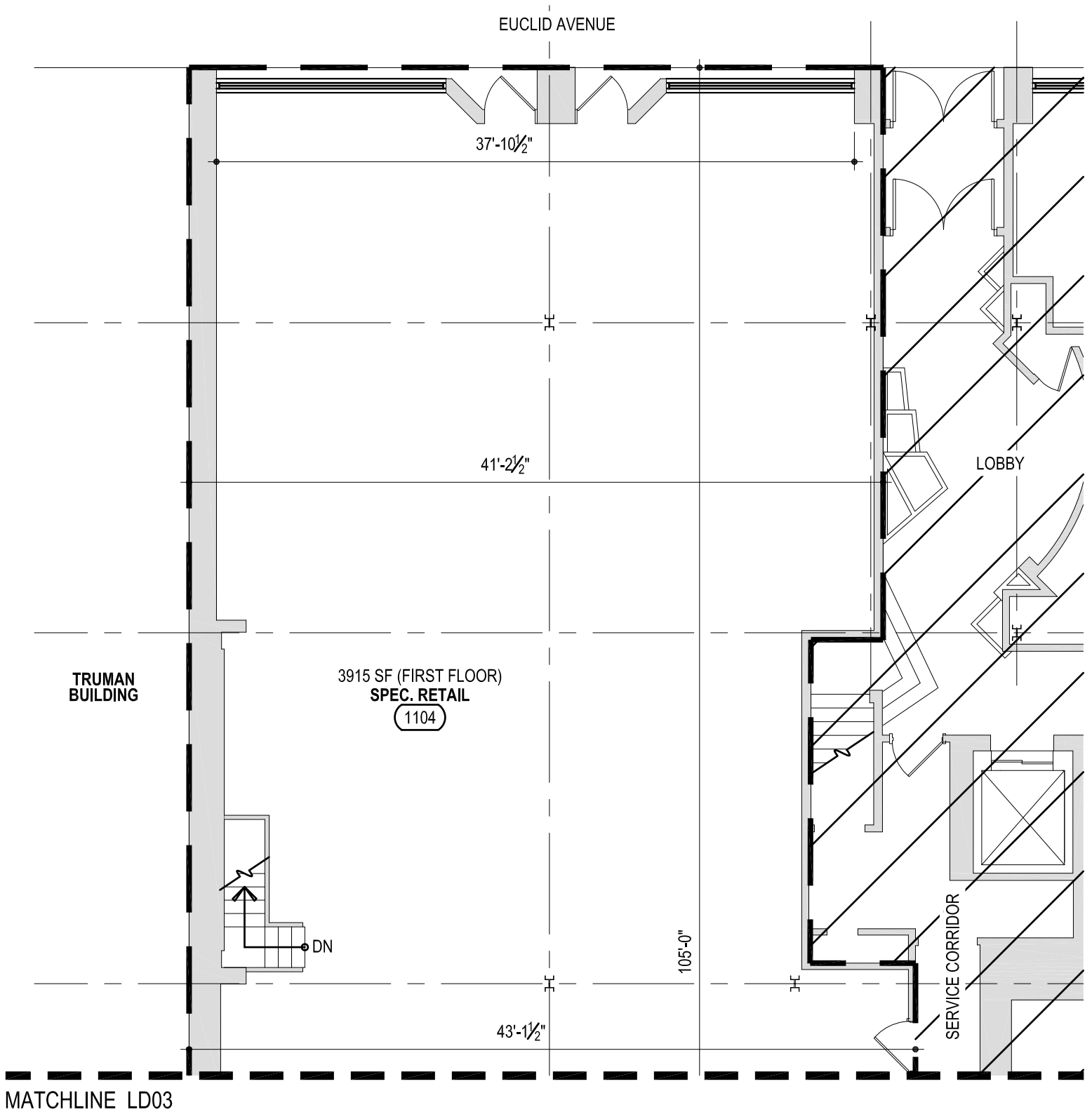
FIRST FLOOR PLAN

0' 5' 10' 20'

31 MARCH 2014

LD01

This information has been secured from sources we believe are reliable, but we make no representations or warranties, expressed or implied, as to the accuracy of the information. References to condition, square footage or age are approximate. Buyer or Tenant acknowledges that they are relying on their own investigations and are not relying on provided reference information.



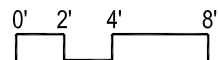
MATCHLINE LD03



1104 EUCLID AVENUE
CLEVELAND, OHIO 44115
SECURITY FED. BUILDING



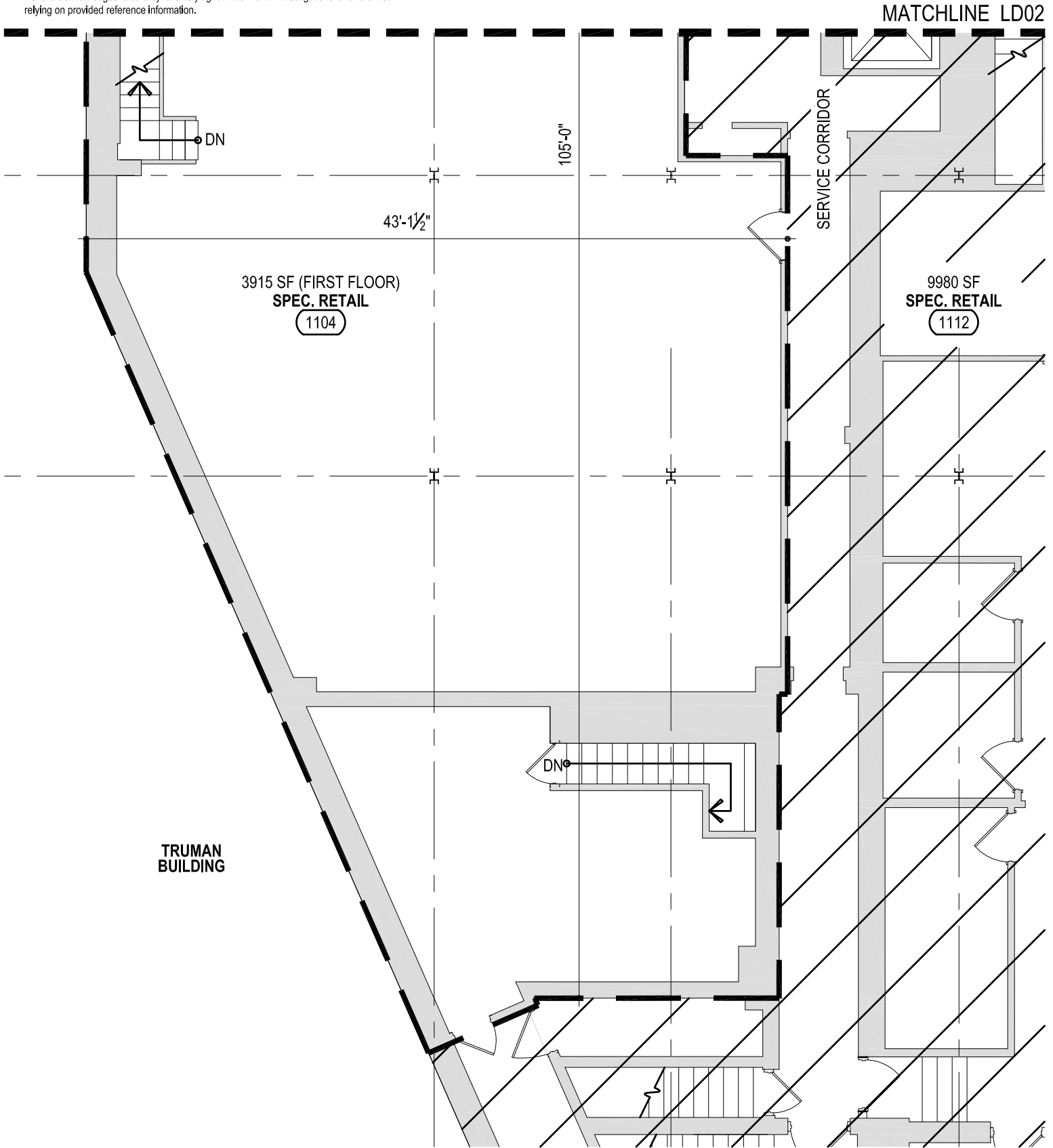
FIRST FLOOR PLAN



31 MARCH 2014

LD02

This information has been secured from sources we believe are reliable, but we make no representations or warranties, expressed or implied, as to the accuracy of the information. References to condition, square footage or age are approximate. Buyer or Tenant acknowledges that they are relying on their own investigations and are not relying on provided reference information.

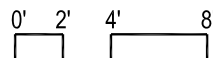


1104 EUCLID AVENUE
CLEVELAND, OHIO 44115

SECURITY FED. BUILDING



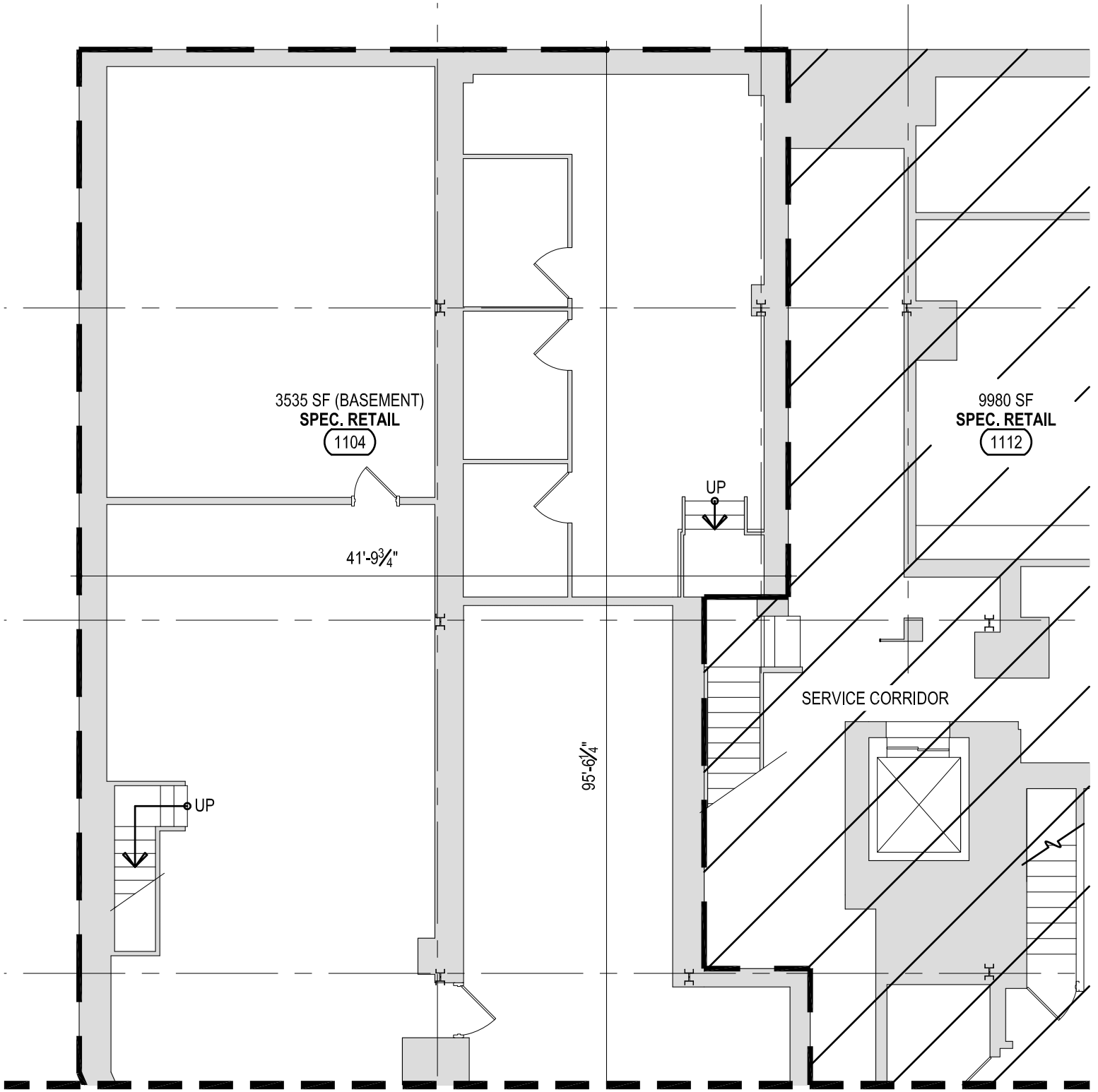
FIRST FLOOR PLAN



31 MARCH 2014

LD03

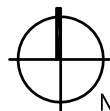
This information has been secured from sources we believe are reliable, but we make no representations or warranties, expressed or implied, as to the accuracy of the information. References to condition, square footage or age are approximate. Buyer or Tenant acknowledges that they are relying on their own investigations and are not relying on provided reference information.



MATCHLINE LD05



1104 EUCLID AVENUE
CLEVELAND, OHIO 44115
SECURITY FED. BUILDING



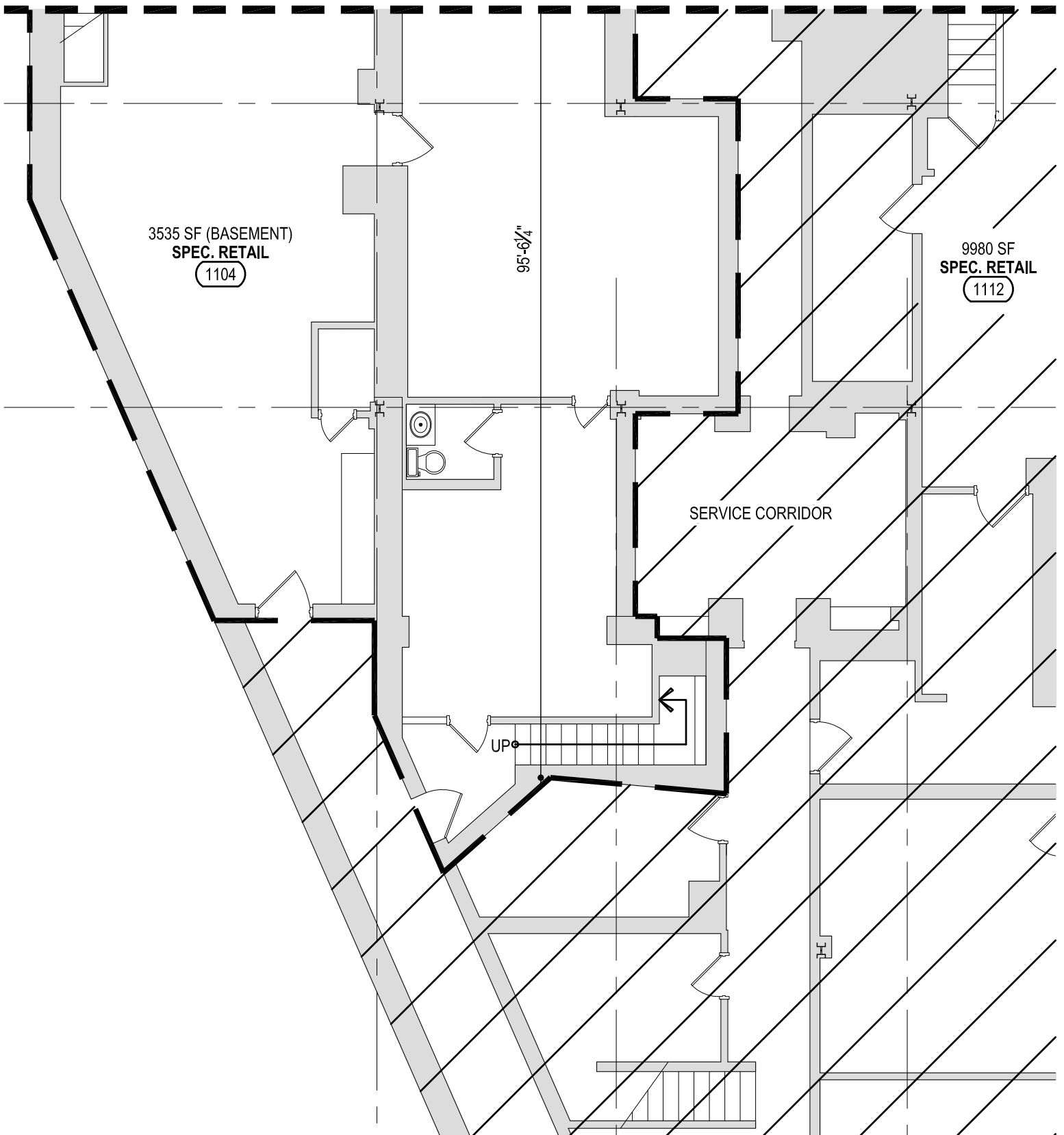
BASEMENT PLAN
0' 2' 4' 8'

31 MARCH 2014

LD04

This information has been secured from sources we believe are reliable, but we make no representations or warranties, expressed or implied, as to the accuracy of the information. References to condition, square footage or age are approximate. Buyer or Tenant acknowledges that they are relying on their own investigations and are not relying on provided reference information.

MATCHLINE LD04

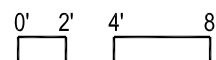


1104 EUCLID AVENUE
CLEVELAND, OHIO 44115

SECURITY FED. BUILDING



BASEMENT PLAN



31 MARCH 2014

LD05