

### **Standard:**

Office: 13'x12.5'

### **Upgrade:**

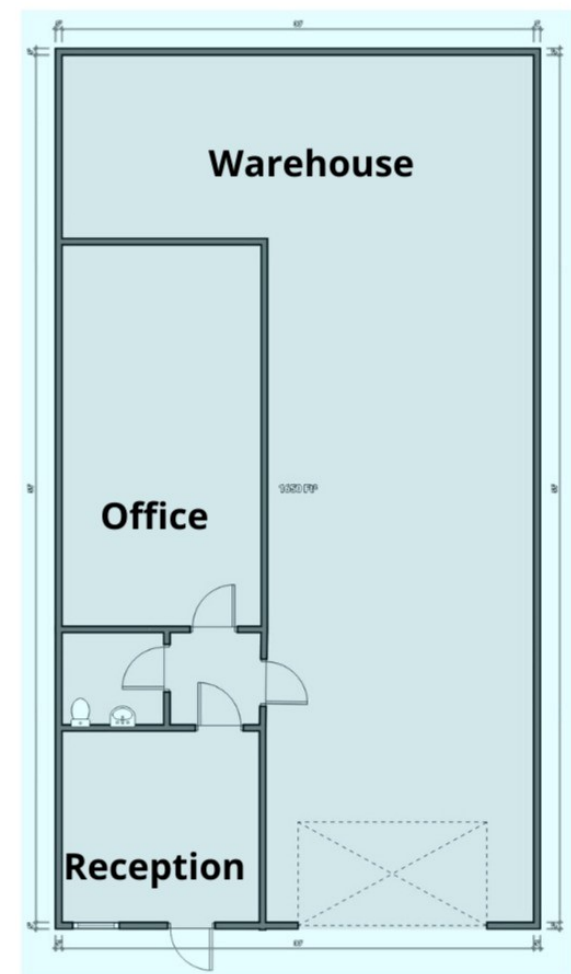
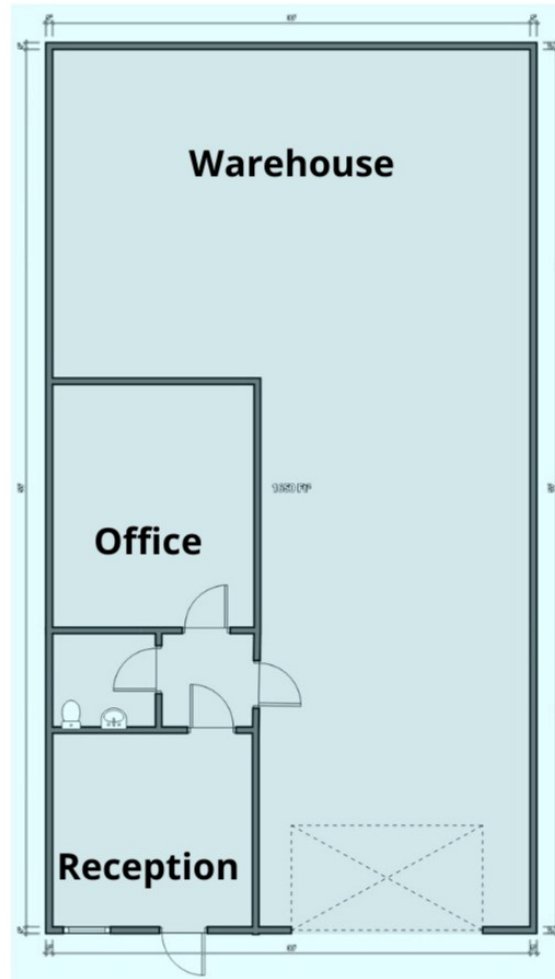
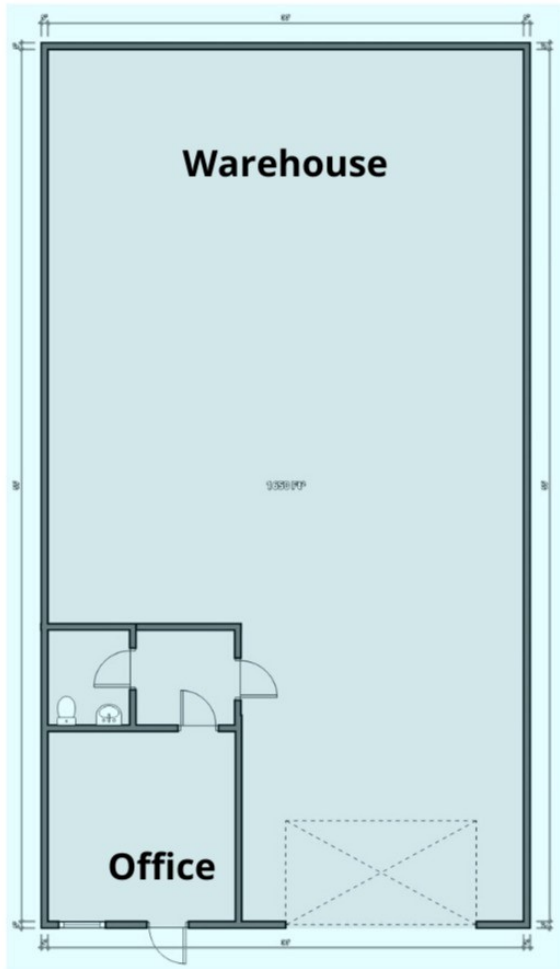
Reception: 13'x12.5'

Office: 16'x13'

### **Premium:**

Reception: 13'x12.5'

Office: 25'x13'



*Each suite offers:*

- Rent + electric (not triple net)
- Landlord covers taxes, trash, water, parking and HVAC maintenance

- Optional upgrades (garage door opener, etc.)
- 2-inch closed cell foam insulation
- Fiber pulled into building for up to 1G

**Custom dimensions and build-outs will be considered.**