



175 Lauman Lane, Hicksville, NY 11801

Renovation Complete

175 Lauman Lane recently underwent a complete gut renovation including a new energy saving, white TPO roof, new warehouse whitebox, new office buildout and new LED lighting. This building offers a 19,258 sq. ft., 15' clear warehouse in Nassau County. The site is situated in proximity to the Long Island Expressway and near major occupiers including FedEx, UPS and Amazon, who were attracted to the surrounding area for its prime westward location.

Specifications

19,258 sq. ft.
AVAILABLE

2,222 sq. ft.
OFFICE AREA

15'
CLEAR HEIGHT

1971/2023
YEAR BUILT/RENOVATED

2
DOCK DOORS

3
DRIVE-INS

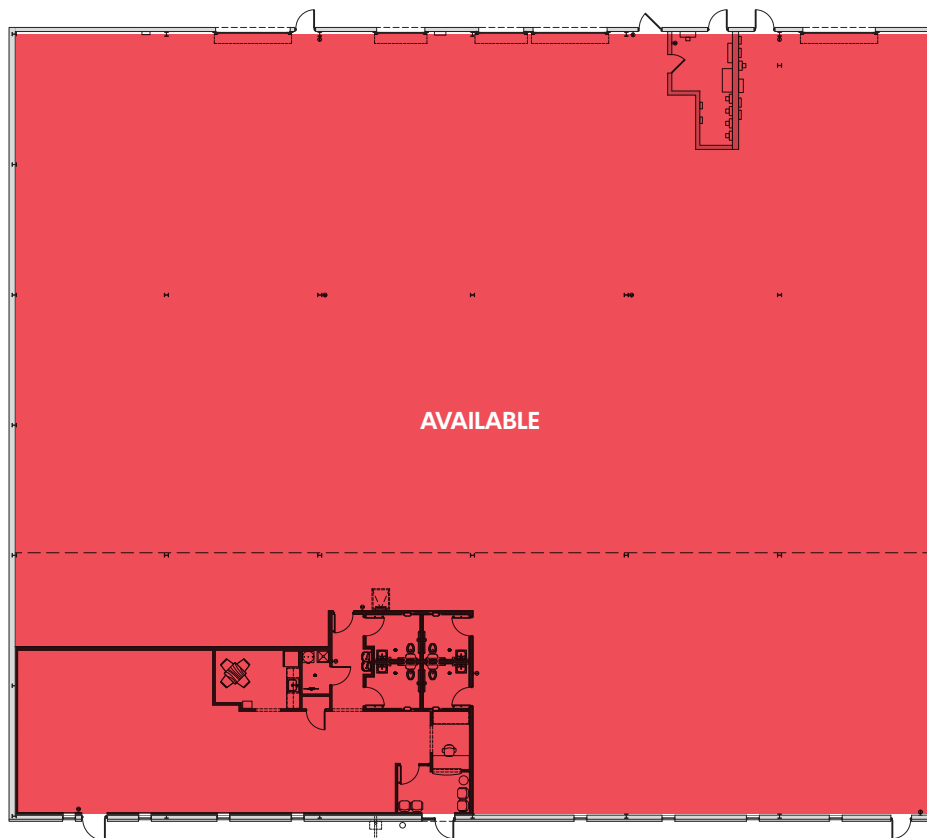
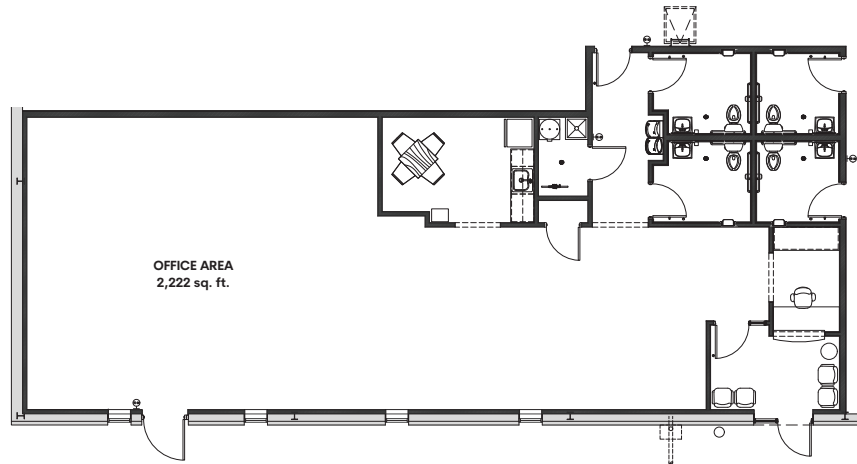
46 spaces
AUTO PARKING

1600 Amps
POWER

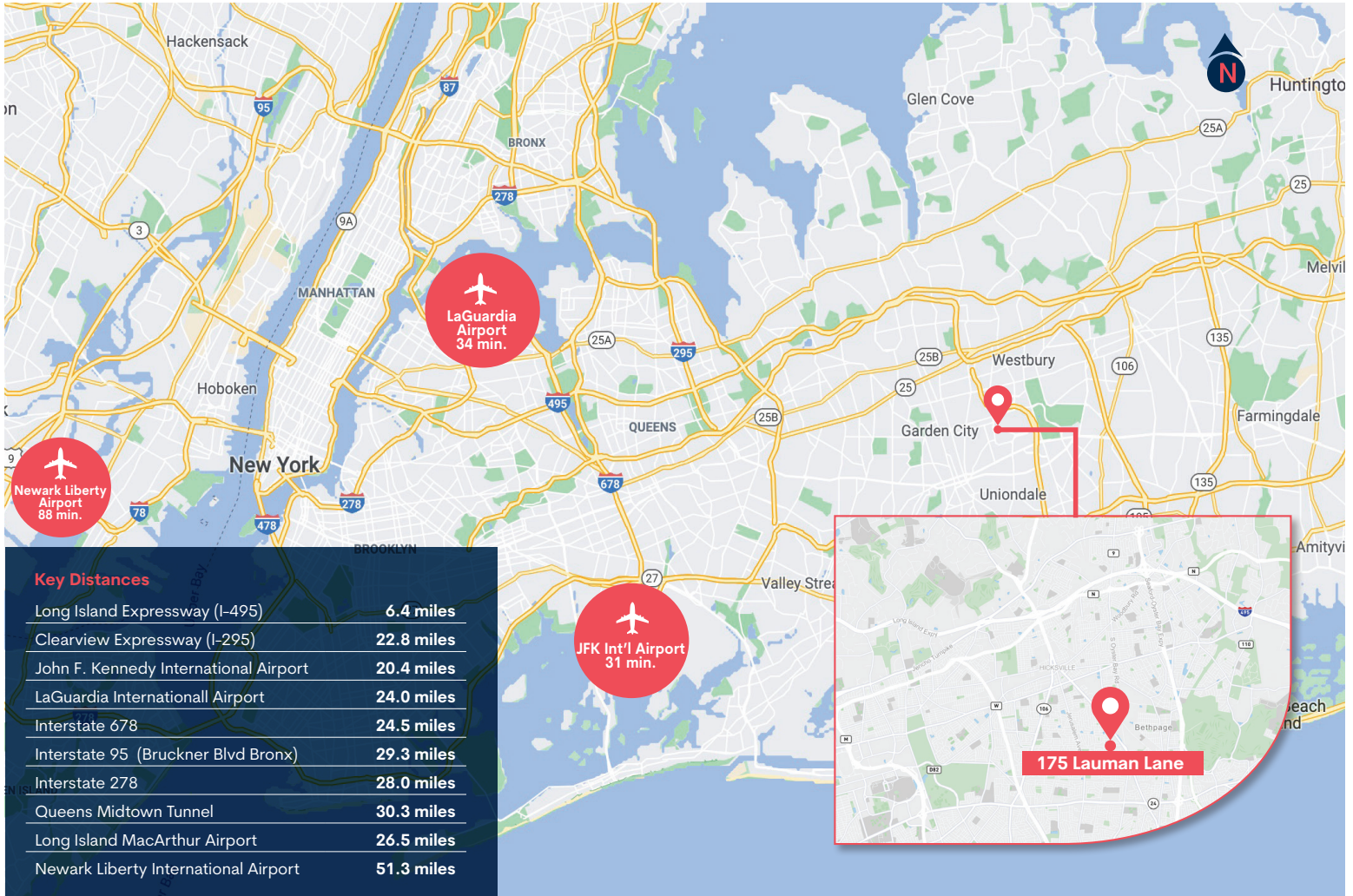
New Warehouse Whitebox
New LED Lighting throughout
New Roof
New HVAC, doors and windows

Close distance to Long Island Expressway I-495 (6.4 miles) and JFK International Airport, highway arteries, and rail lines









Contacts



Paul Leone
 D 631.370.6052
 paul.leone@cbre.com

Matt Manoogian
 D 631.370.6063
 matt.manoogian@cbre.com

Brookfield Properties

Ivan Bushka
 D 201.514.1991
 ivan.bushka@brookfieldproperties.com