



SANDY OFFICE SUITE AVAILABLE FOR LEASE

8899 SOUTH 700 EAST, SANDY, UTAH 84070



PROPERTY INFORMATION

- Suite 200: 4,000 RSF Office
- Recently Remodeled and Move-In Ready
- Open Floor Plan; Option to Add Private Offices
- ADA Accessible with Elevator Access
- Monument Signage Available
- Ample Parking Available: 4.5/1,000 SF
- Highly Visible on 700 East
- Easy Access to I-15

LEASE RATE: \$21.00/SF FULL SERVICE

DEMOGRAPHICS

	1 Mile	3 Mile	5 Mile
Population	17,890	135,127	267,598
Households	5,986	50,383	101,022
Avg. Household Income	\$90,757	\$79,513	\$80,040

TRAFFIC COUNTS

9000 South: 44,000 Annual Average Daily Traffic

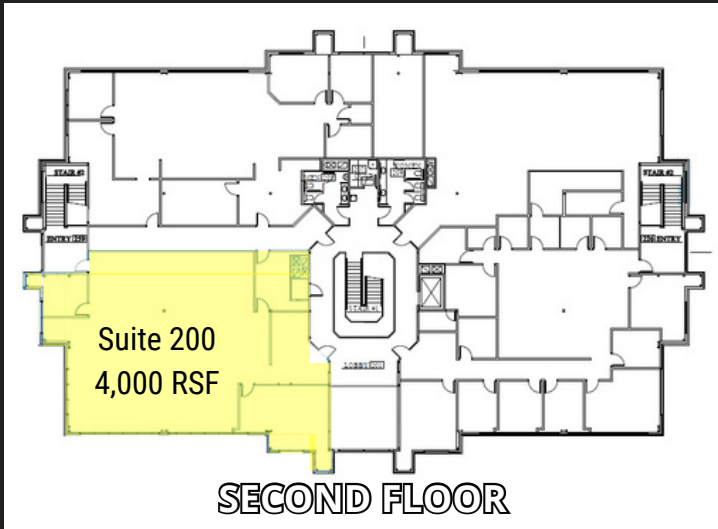
700 East: 40,000 Annual Average Daily Traffic

801.617.1707



SANDY OFFICE SUITE AVAILABLE FOR LEASE

8899 SOUTH 700 EAST, SANDY, UTAH 84070



This information is given with the understanding that all negotiations and/or real estate activity related to the property described above shall be conducted through this cRc Nationwide office. The above information while not guaranteed, was obtained from sources we believe to be reliable.

801.617.1707

CRYSTAL JOHNSON | CRYSTAL.JOHNSON@CRCNATIONWIDE.COM