



# Parcel A: Wilson Cusseta Properties

128 Ga Hwy 520  
Cusseta Chattahoochee County, Georgia  
31805

## Property Highlights

- This rural 1.35 acre property is located in Cusseta, GA.
- A single story, 8,827 SF warehouse building is located on the parcel of land.

## Property Overview

- Parcel A: 1.35 acres:
- Tax #: C01 0030: 0.48 acres.
  - Tax #: C01 0031IN: 0.53 acres.
  - Tax #: C01 0031OUT: 0.34 acres; contains warehouse

## Offering Summary

<b>Sale Price:</b>	\$475,000
<b>Building Size:</b>	8,827 SF
<b>Lot Size:</b>	1.35 Acres

## Demographics 1 Mile 5 Miles 10 Miles

	1 Mile	5 Miles	10 Miles
<b>Total Households</b>	53	931	3,673
<b>Total Population</b>	107	2,119	9,881
<b>Average HH Income</b>	\$37,089	\$38,340	\$43,183

## For More Information

### Dave Jackson

O: 706 660 5418 x1006  
djackson@g2cre.com | GA #344658

### Rem Brady

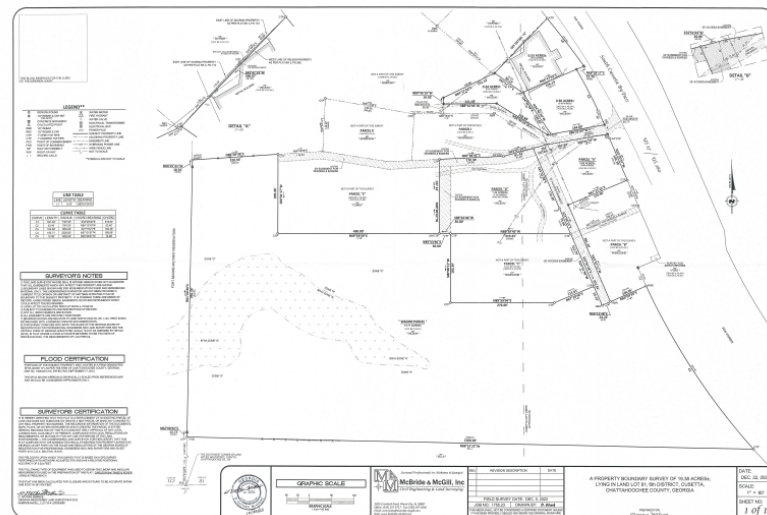
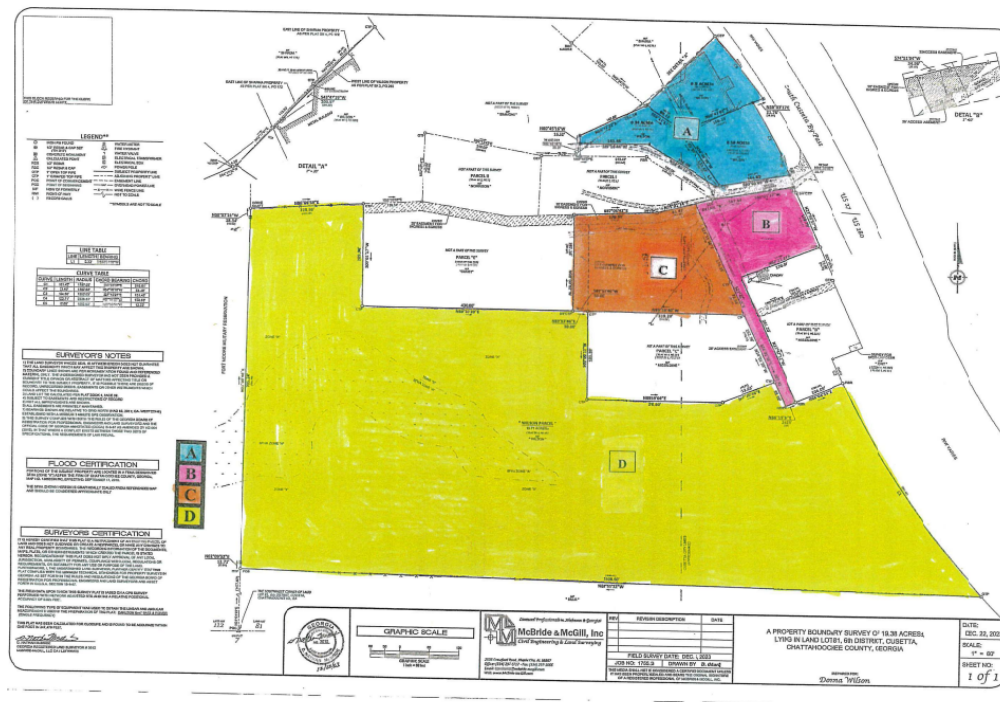
O: 706 660 5418 x1007  
rbrady@g2cre.com | GA #353461



We obtained the information above from sources we believe to be reliable. However, we have not verified its accuracy and make no guarantee, warranty or representation about it. It is submitted subject to the possibility of errors, omissions, change of price, rental or other conditions, prior sale, lease or financing, or withdrawal without notice. We include projections, opinions, assumptions or estimates for example only, and they may not represent current or future performance of the property. You and your tax and legal advisors should conduct your own investigation of the property and transaction.

Post Office Box 4529  
Columbus, GA 31904  
706 660 5418 tel  
**G2cre.com**





We obtained the information above from sources we believe to be reliable. However, we have not verified its accuracy and make no guarantee, warranty or representation about it. It is submitted subject to the possibility of errors, omissions, change of price, rental or other conditions, prior sale, lease or financing, or withdrawal without notice. We include projections, opinions, assumptions or estimates for example only, and they may not represent current or future performance of the property. You and your tax and legal advisors should conduct your own investigation of the property and transaction.

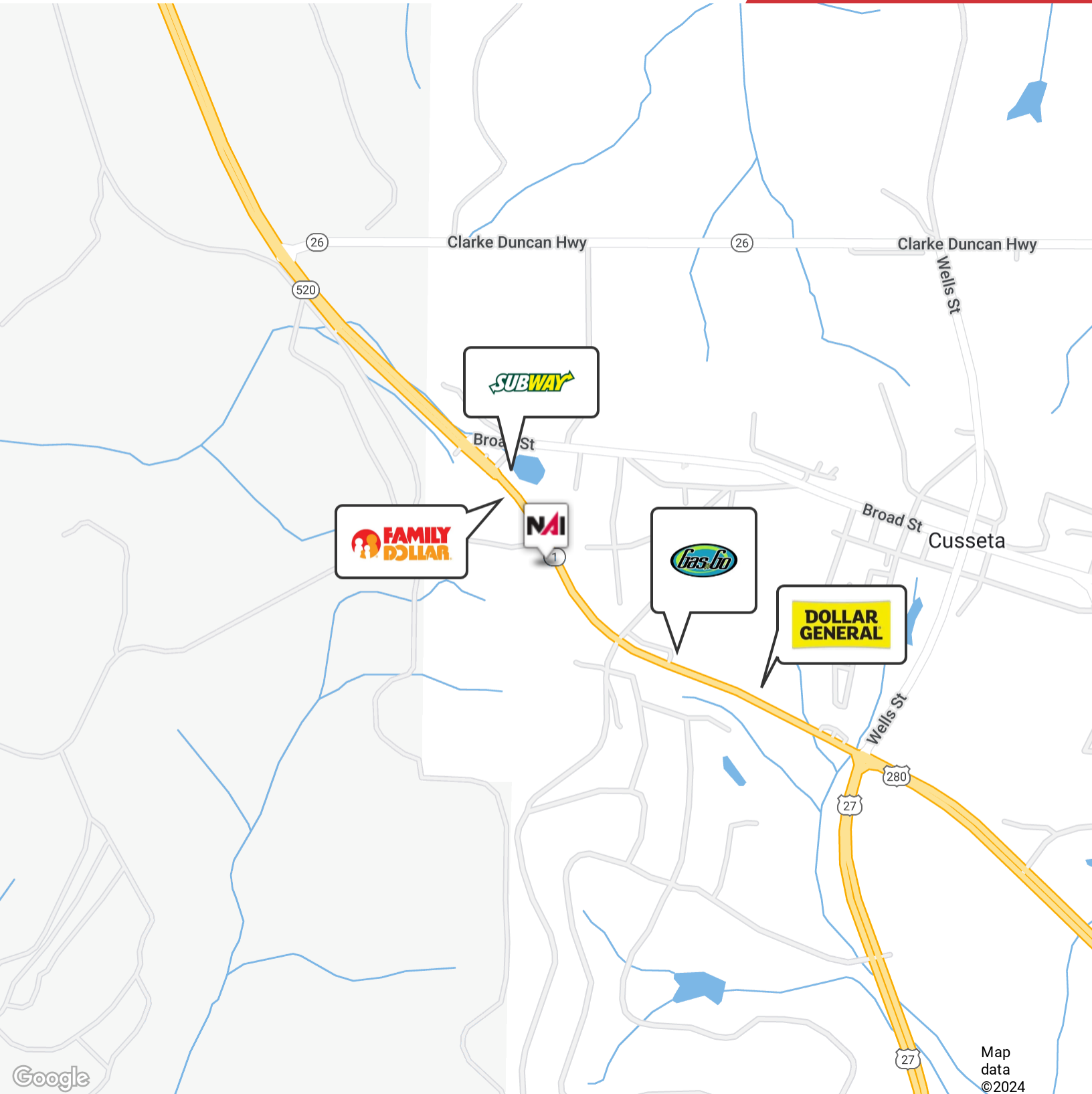
Post Office Box 4529  
Columbus, GA 31904  
706 660 5418 tel  
**G2cre.com**





We obtained the information above from sources we believe to be reliable. However, we have not verified its accuracy and make no guarantee, warranty or representation about it. It is submitted subject to the possibility of errors, omissions, change of price, rental or other conditions, prior sale, lease or financing, or withdrawal without notice. We include projections, opinions, assumptions or estimates for example only, and they may not represent current or future performance of the property. You and your tax and legal advisors should conduct your own investigation of the property and transaction.

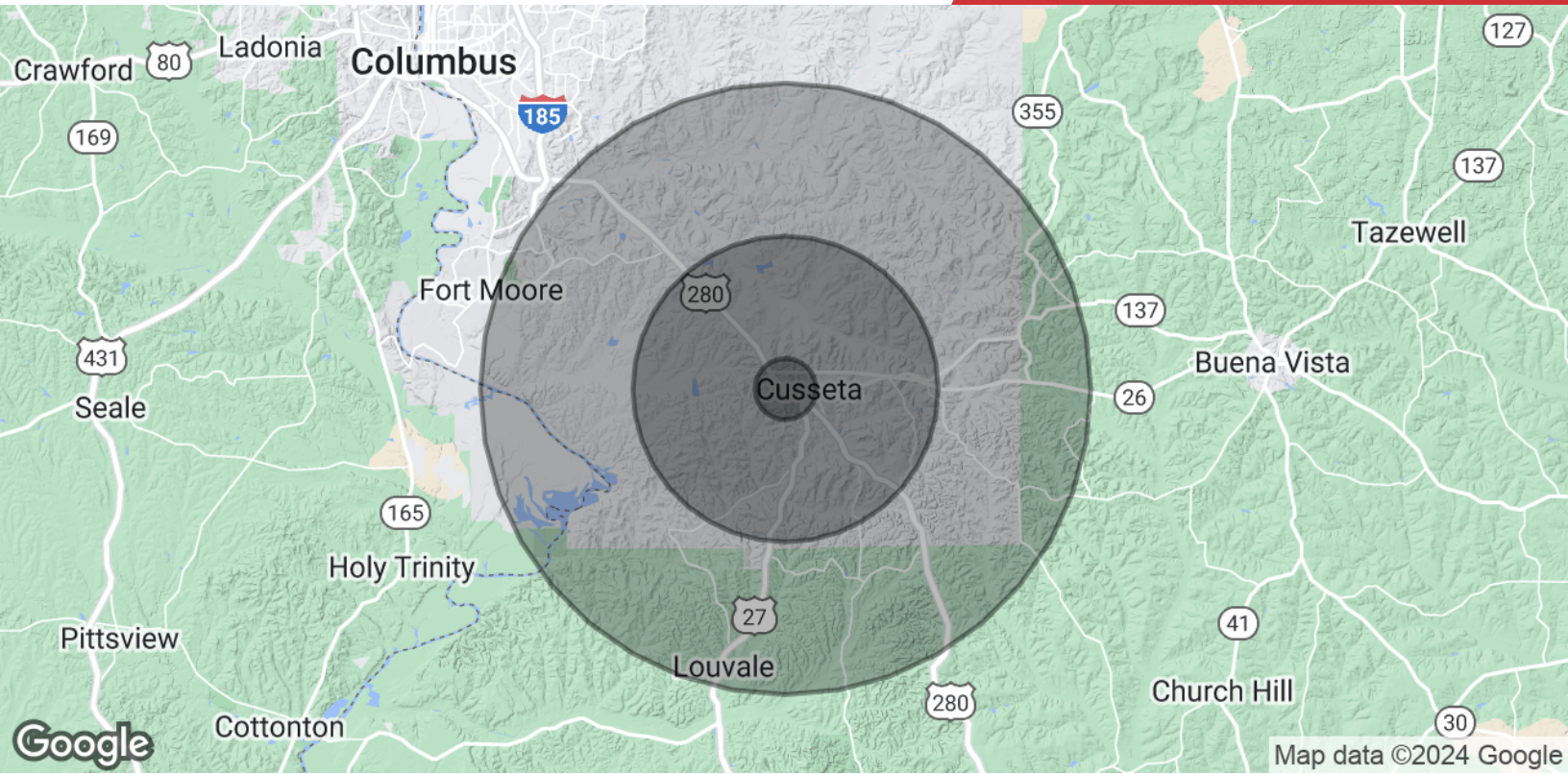
Post Office Box 4529  
Columbus, GA 31904  
706 660 5418 tel  
**G2cre.com**



We obtained the information above from sources we believe to be reliable. However, we have not verified its accuracy and make no guarantee, warranty or representation about it. It is submitted subject to the possibility of errors, omissions, change of price, rental or other conditions, prior sale, lease or financing, or withdrawal without notice. We include projections, opinions, assumptions or estimates for example only, and they may not represent current or future performance of the property. You and your tax and legal advisors should conduct your own investigation of the property and transaction.

Post Office Box 4529  
Columbus, GA 31904  
706 660 5418 tel  
**G2cre.com**





Population	1 Mile	5 Miles	10 Miles
<b>Total Population</b>	107	2,119	9,881
<b>Average Age</b>	38.3	35.5	29.7
<b>Average Age (Male)</b>	38.3	34.6	28.6
<b>Average Age (Female)</b>	37.5	34.3	29.7
Households & Income	1 Mile	5 Miles	10 Miles
<b>Total Households</b>	53	931	3,673
<b># of Persons per HH</b>	2.0	2.3	2.7
<b>Average HH Income</b>	\$37,089	\$38,340	\$43,183
<b>Average House Value</b>	\$73,493	\$64,210	\$59,628

\* Demographic data derived from 2020 ACS - US Census