

FOR SALE

**85 SPRINGVIEW LANE
SUMMERVILLE, SC 29485**



FOR SALE | 7,048 SF

Kip Bowman
Principal
kipbowman@gmail.com

Sara Bodell
Broker
sbodell@cbcatlantic.com



**COLDWELL BANKER
COMMERCIAL
ATLANTIC**

MEDICAL OFFICE FOR SALE

PROPERTY OVERVIEW

Exceptional opportunity to acquire a well-maintained medical office building in the high-demand medical district of Summerville. Perfect for an owner-operator, the property offers the ability to occupy Suite B while benefiting from steady rental income from Suites A and C. Suites B and C share a waiting area, as well as common restrooms and a break room, creating a convenient and efficient layout for patients and staff. Suite A features its own private entrance, offering added privacy and flexibility for its tenant. The building is in great condition and offers ample parking, making it an ideal office space in one of Summerville's most sought-after healthcare corridors. Current tenants include Summerville Surgical Associates and Palmetto Primary Care Physicians. Summerville Medical Hospital is 0.3 miles from this site with 174 inpatient beds with an expansion in-progress of another 56 beds and also offers 14 ICU rooms.

85 Springview Lane | Summerville, SC 29485



MEDICAL OFFICE FOR SALE

OFFERING SUMMARY



PRICE

\$2,050,000



ZONING

Dorchester - NB -
Neighborhood Business



ACRES

1 Acre



BUILDING SIZE

7,048 SF



COUNTY

Dorchester County



TAX ID

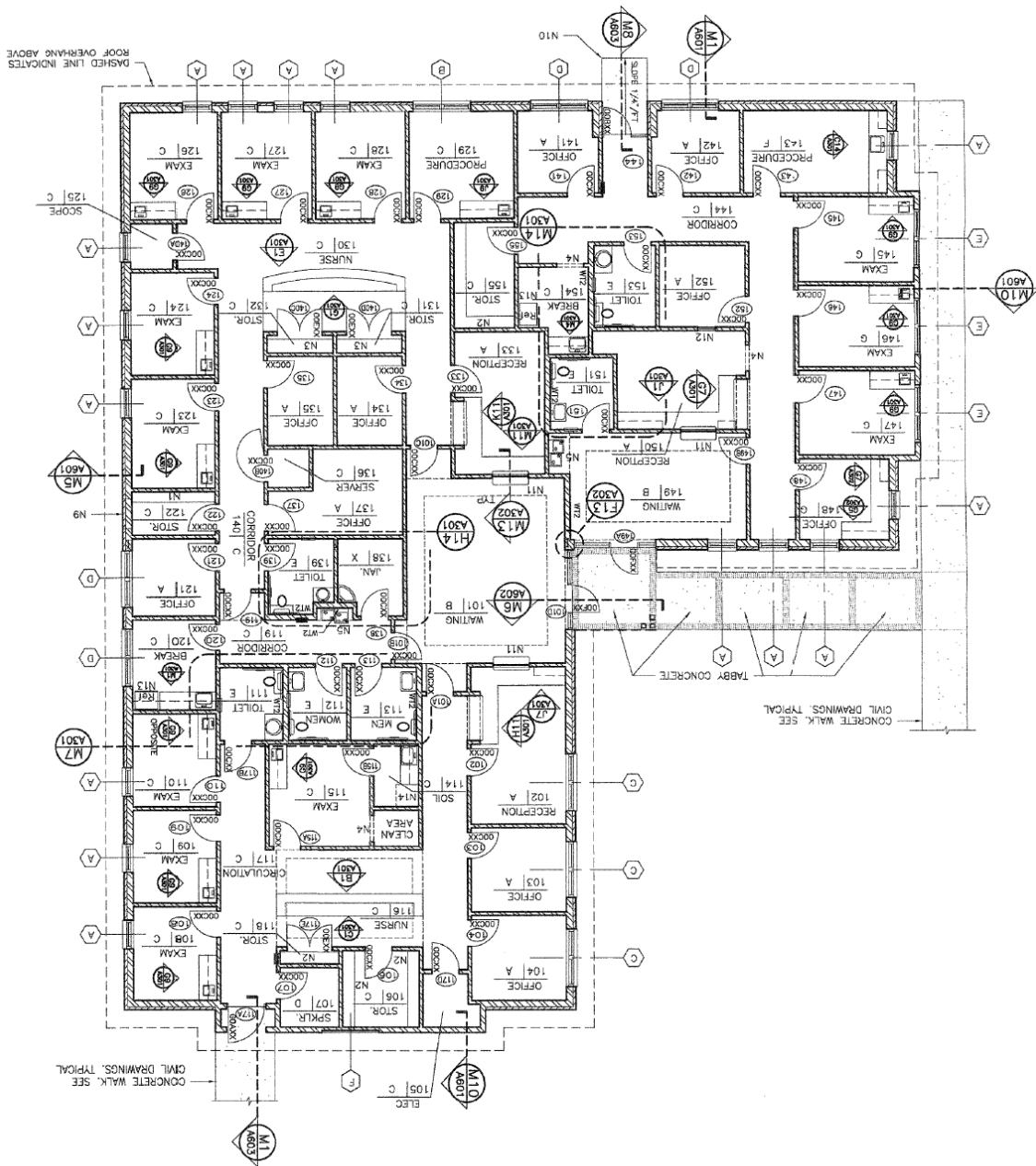
154-00-00-065

85 Springview Lane | Summerville, SC 29485



FLOOR PLAN

| Suite | Tenant | SF |
|-------|-----------------------|----------|
| A | Summerville Surgical | 2,130 SF |
| B | Palmetto Primary Care | 1,950 SF |
| C | Vacant | 2,075 SF |



MEDICAL OFFICE FOR SALE

AERIAL

Springview Ln

SITE

85 Springview Lane

LOWCOUNTRY
Women's Specialists

Palms
ON ASHLEY RIVER

MUSC H

 **MUSC Health**
Medical University of South Carolina

85 Springview Lane | Summerville, SC 29485



COLDWELL BANKER
COMMERCIAL
ATLANTIC

MEDICAL OFFICE FOR SALE

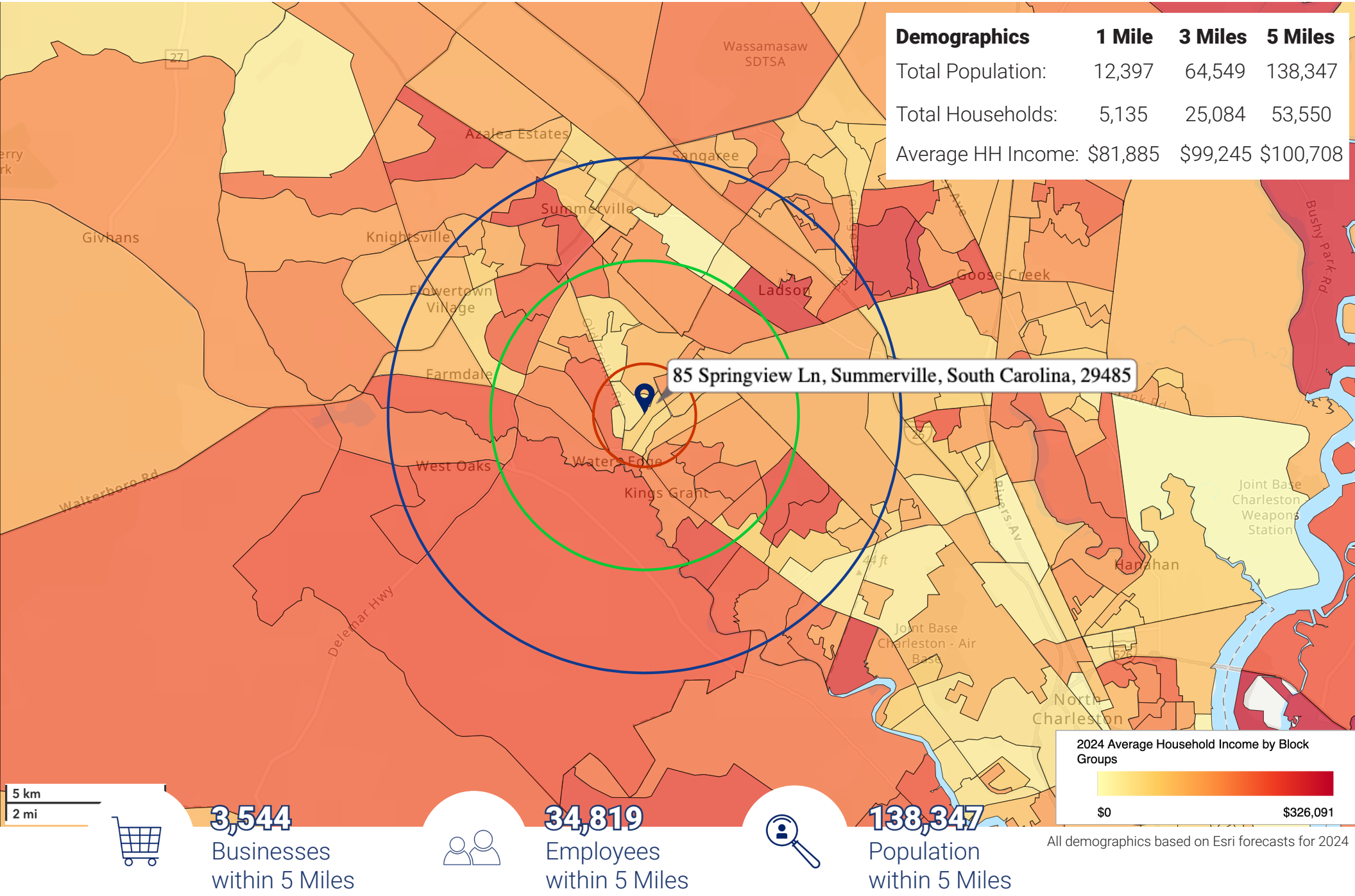
LOCATION



Colonial Dorchester State Historic Site

85 Springview Lane | Summerville, SC 29485

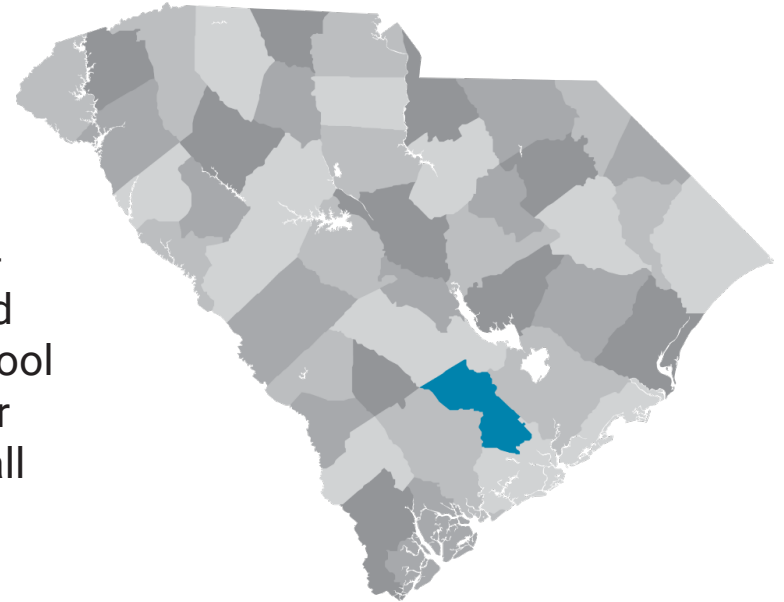
DEMOGRAPHICS



MEDICAL OFFICE FOR SALE

DORCHESTER COUNTY

Nestled atop the Greater Charleston Region, Dorchester County is one of the fastest growing areas in the state with the third highest labor force participation rate. With award-winning school districts, first-rate amenities, and low cost-of-living, Dorchester County offers the perfect blend of booming business and small town charm.



DORCHESTER COUNTY BY THE NUMBERS

166,133

Dorchester County Population

6TH

fastest growing county SC

APPROX. 1/3

of the U.S. Population is within 500
miles of the Charleston Region

<https://www.dorchesterforbusiness.com/>

FOR SALE

**85 SPRINGVIEW LANE
SUMMERVILLE, SC 29485**

Kip Bowman
Principal
(C) 843.437.0074
kipbowman@gmail.com

Sara Bodell
Broker
(C) 864.903.2731
sbodell@cbscatlantic.com



**COLDWELL BANKER
COMMERCIAL
ATLANTIC**

3506 W Montague Ave Suite 200
North Charleston, SC 29418
843.744.9877
cbscatlantic.com | cbcretailatlantic.com

This information has been obtained from sources believed reliable but has not been verified for accuracy or completeness. Coldwell Banker Commercial Atlantic makes no guarantee, representation or warranty and accepts no responsibility or liability as to the accuracy, completeness, or reliability of the information contained herein. You should conduct a careful, independent investigation of the property and verify all information. Any reliance on this information is solely at your own risk. The information contained herein should be considered confidential and remains the sole property of Coldwell Banker Commercial Atlantic at all times. Although every effort has been made to ensure accuracy, no liability will be accepted for any errors or omissions. Disclosure of any information contained herein is prohibited except with the express written permission of Coldwell Banker Commercial Atlantic.