

RETAIL SPACE
FOR LEASE

GOLDEN
VALLEY



TOWN
SQUARE

663-693 Winnetka Ave N
Golden Valley, MN 55427





GOLDEN VALLEY TOWN SQUARE

Golden Valley Town Square is mid-sized Neighborhood Center, conveniently located off Highway 55 and Winnetka Avenue in the heart of Golden Valley. The property is surrounded by professional offices, residential apartments, and single-family homes. This attractive, 2-story Neighborhood Center offers a robust tenant mix of retail, office and restaurants and is only minutes away from Downtown Minneapolis. The building is well maintained with attractive landscaping, an elevated walk-around patio, and abundant off-street parking available on the northwest, east, and south side of the building.

Property Stats	
Size	37,850 SF, 1.71 Acres
Height	2 stories
Year Built	2000
Occupancy Type	Multi-tenant
Rate	Negotiable
CAM/Tax	\$15.46/SF
Parking	Off-street parking, 2-story parking ramp in back
Co-tenants	Block Advisors, Davanni's, Bergstrom Studio, Mainstream Boutique, Golden Valley Animal Hospital, Triple D Espresso, WA Campion & Co, Pups & Stuff, Custom Trim Barbers, New Asian Ju Yuan, Fix My Busted Computer, and Hidden Nails

Population	
1 Mile	2,802
3 Miles	38,711
5 Miles	130,441

Average Household Income	
1 Mile	\$87,528
3 Miles	\$84,516
5 Miles	\$77,048

Traffic Counts	
Hwy 55	32,499 vpd
Winnetka Avenue	9,235 vpd
Golden Valley Road	3,897 vpd

PROPERTY FEATURES



Prominent corner with great visibility



Easy access to Hwy 55, Hwy 169 and I-394



Indoor common area seating



Abundant parking



First floor retail



On the bus line



Elevator



Building signage



Outdoor patio

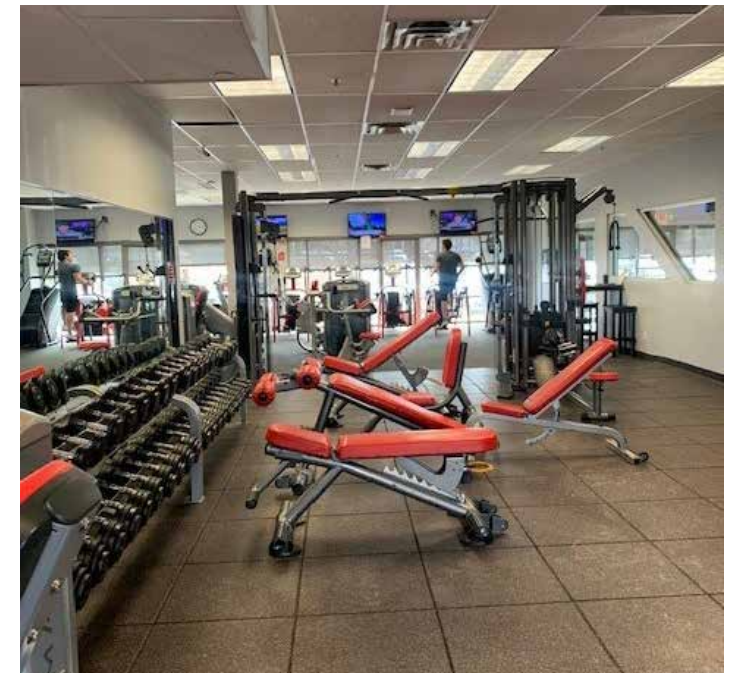
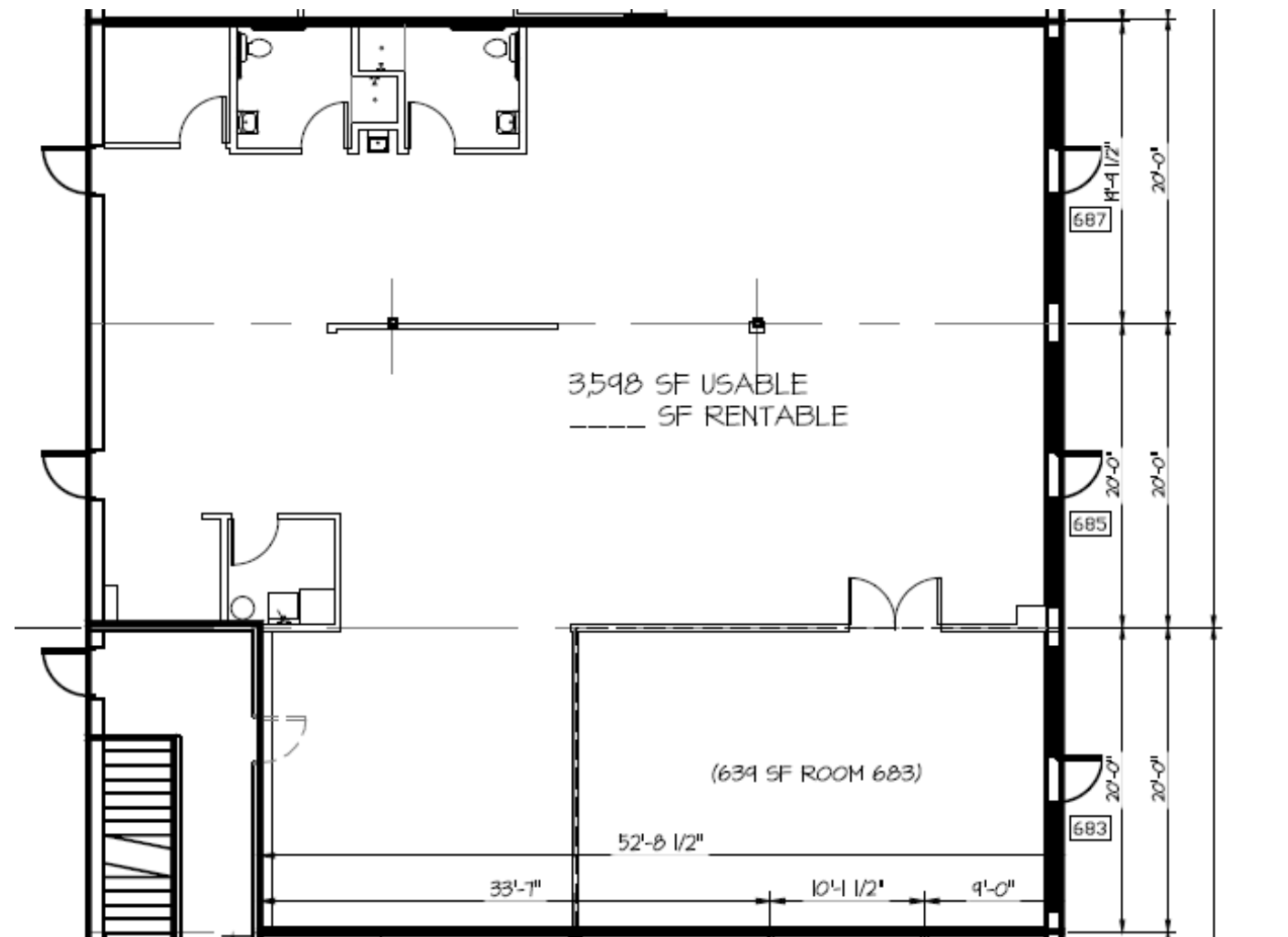


Family friendly dining



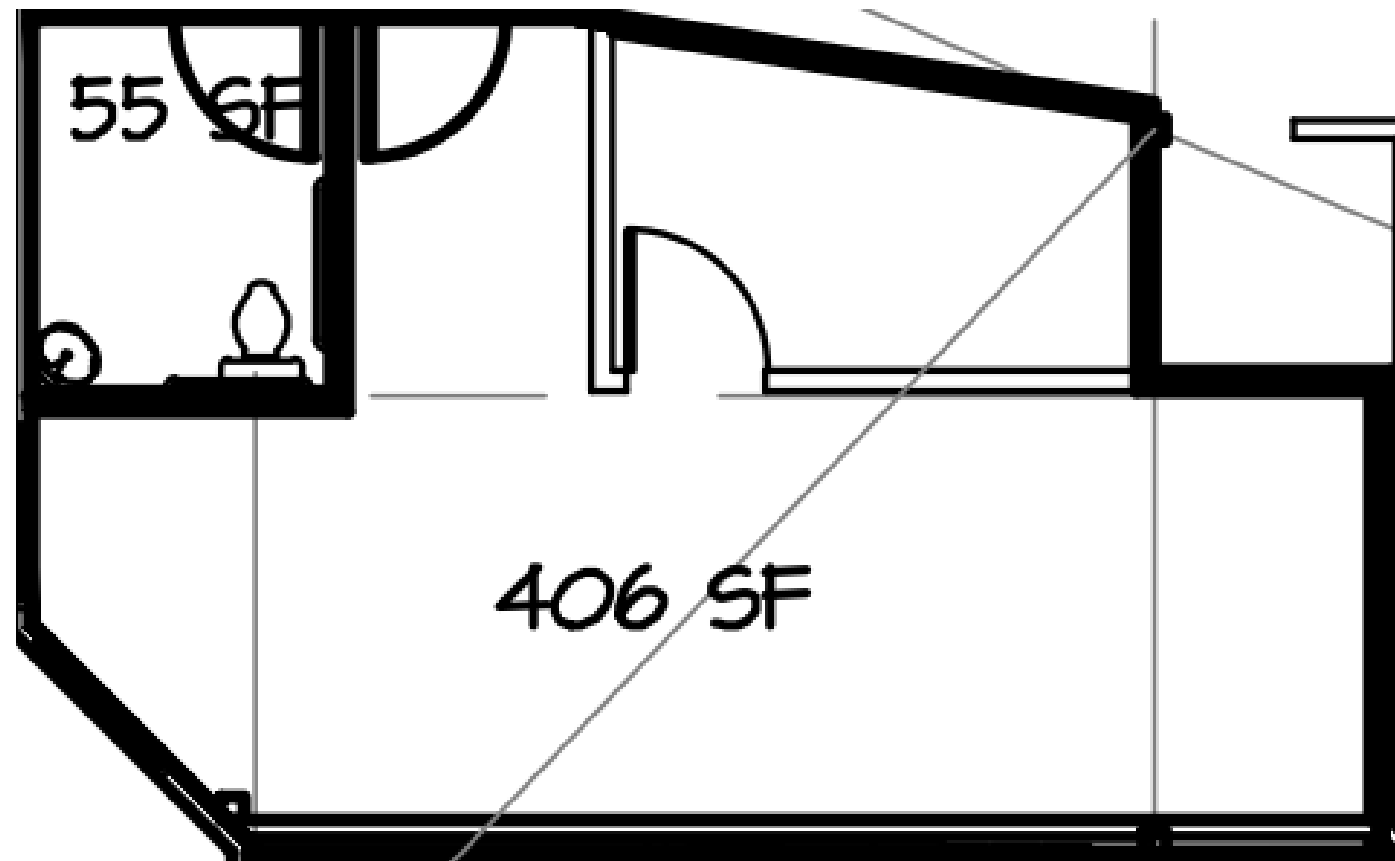
SPACES FOR FOR LEASE

Suite 685 : 1,492-4,055 SF



SPACES FOR FOR LEASE

Suite 679B : Available 11/1/25 - Smoothie space with small kitchen space



For more information or for a personal property tour, contact



Mary Lindell
Retail Specialist

612-747-9854
mlindell@suntide.com



Alex Brown
Director

952-200-0675
alex@caspiarealty.com