



FOR LEASE

CYPRESS PLAZA

230 RESERVATION RD, MARINA, CA 93933

 **Kidder
Mathews**

FOR LEASE

Cypress Plaza

230 RESERVATION ROAD, MARINA, CA 93933



Retail shop space in central Marina location

WALGREENS anchored center

SIGNALIZED intersection with excellent access

ATTRACTIVE and modern designed center

DEMOGRAPHICS

	1 Mile	3 Miles	5 Miles
2021 Population	15,530	27,280	38,125
Average HH Income	\$94,651	\$96,572	\$99,592
Daytime Population	8,615	15,581	20,272

TRAFFIC COUNTS

Reservation Rd	15,056 ADT
Del Monte Blvd	13,825 ADT

JON STANSBURY

408.588.2340

jon.stansbury@kidder.com

LIC N° 01125699

KIDDER.COM

This information supplied herein is from sources we deem reliable. It is provided without any representation, warranty, or guarantee, expressed or implied as to its accuracy. Prospective Buyer or Tenant should conduct an independent investigation and verification of all matters deemed to be material, including, but not limited to, statements of income and expenses. Consult your attorney, accountant, or other professional advisor.

km Kidder Mathews

FOR LEASE

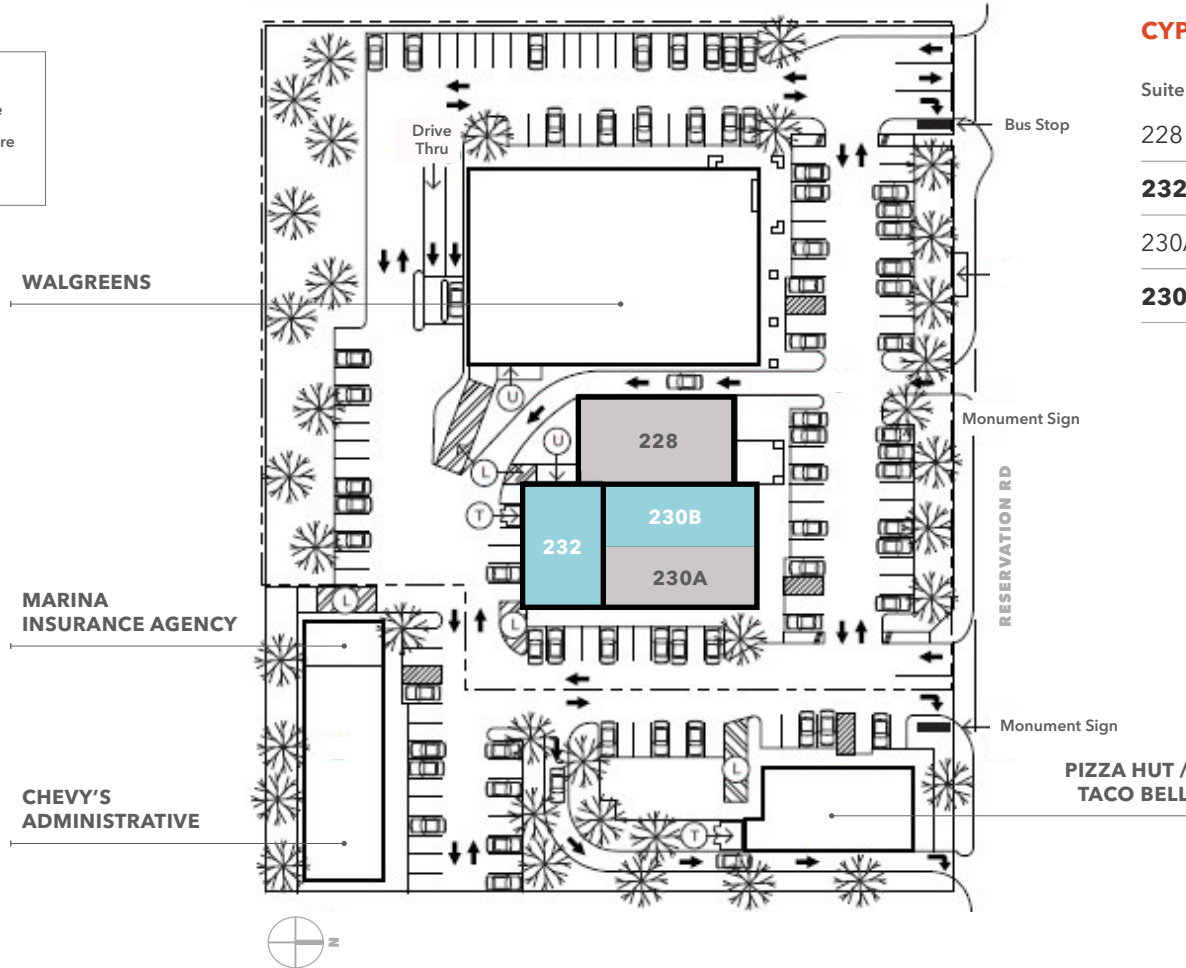
Cypress Plaza

230 RESERVATION ROAD, MARINA, CA 93933

Site Plan

KEY

- Ⓚ Utility Closet
- Ⓛ Loading Zone
- Ⓣ Trash Enclosure
- - - Property Line



CYPRESS PLAZA

Suite	Tenants	Rent/SF/YR
228	T-Mobile	
232	±1,500 SF Available	\$18.00 NNN
230A	Central Coast Dental Care	
230B	±2,250 SF Available	\$21.00 NNN

KIDDER.COM

This information supplied herein is from sources we deem reliable. It is provided without any representation, warranty, or guarantee, expressed or implied as to its accuracy. Prospective Buyer or Tenant should conduct an independent investigation and verification of all matters deemed to be material, including, but not limited to, statements of income and expenses. Consult your attorney, accountant, or other professional advisor.

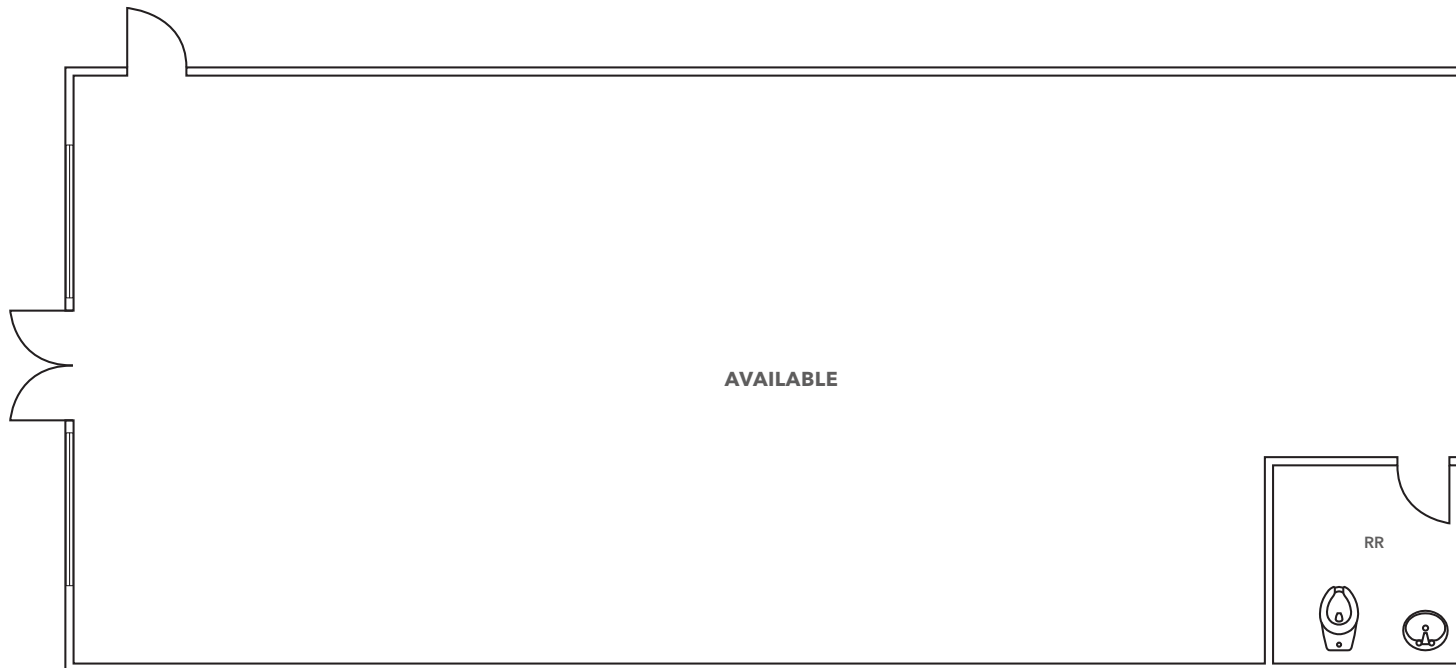


FOR LEASE

Cypress Plaza

230 RESERVATION ROAD, MARINA, CA 93933

Suite 232



±1,500
SQUARE FEET

\$18.00
NNN, LEASE RATE

JON STANSBURY
408.588.2340
jon.stansbury@kidder.com
LIC N° 01125699

KIDDER.COM

This information supplied herein is from sources we deem reliable. It is provided without any representation, warranty, or guarantee, expressed or implied as to its accuracy. Prospective Buyer or Tenant should conduct an independent investigation and verification of all matters deemed to be material, including, but not limited to, statements of income and expenses. Consult your attorney, accountant, or other professional advisor.

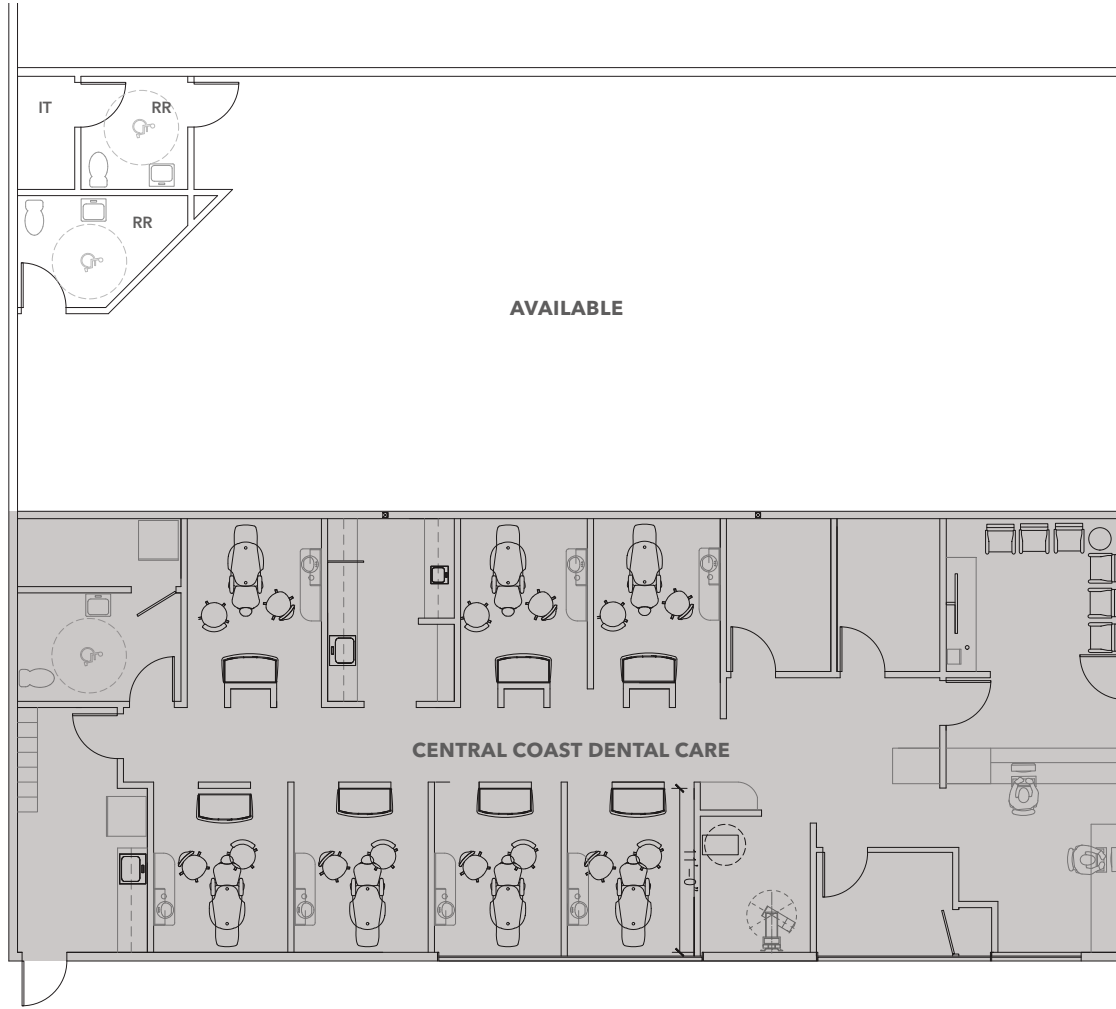
km Kidder Mathews

FOR LEASE

Cypress Plaza

230 RESERVATION ROAD, MARINA, CA 93933

Suite 230B



±2,250

SQUARE FEET

\$21.00

NNN, LEASE RATE

JON STANSBURY

408.588.2340

jon.stansbury@kidder.com

LIC N° 01125699

KIDDER.COM

This information supplied herein is from sources we deem reliable. It is provided without any representation, warranty, or guarantee, expressed or implied as to its accuracy. Prospective Buyer or Tenant should conduct an independent investigation and verification of all matters deemed to be material, including, but not limited to, statements of income and expenses. Consult your attorney, accountant, or other professional advisor.

km Kidder
Mathews