

MILFORD TOWN CENTER AVAILABLE FOR LEASE, SALE OR JOINT VENTURE

Routes 209 / 6 | Milford, PA 18337 | Pike County

PROPERTY HIGHLIGHTS

- New development opportunity in a Historic Town
- 27 acres featuring medical, retail and restaurant uses
- Located along Route 209, half a mile north of Route 206
- Proposed traffic light on Route 209 at entrance
- 5 miles south of Matamoras
- I-84 is less than six minutes away
- 12,700+ VPD passing the site daily
- Additional 7 acres on opposite side of Route 209 & 6 slated for future development



Demographics

	3 Miles	5 Miles
Population	5,970	11,164
Average HH Income	\$90,839	\$92,040
Total Businesses	446	646
Number of Employees	3,652	5,972

*Data Source: Sites USA - REGIS™ 2022

Developed by:



EXCLUSIVE
AGENT:



JAMES DePETRIS
610.941.4034 x108
610.304.4478 cell
jdepetris@lpre.com

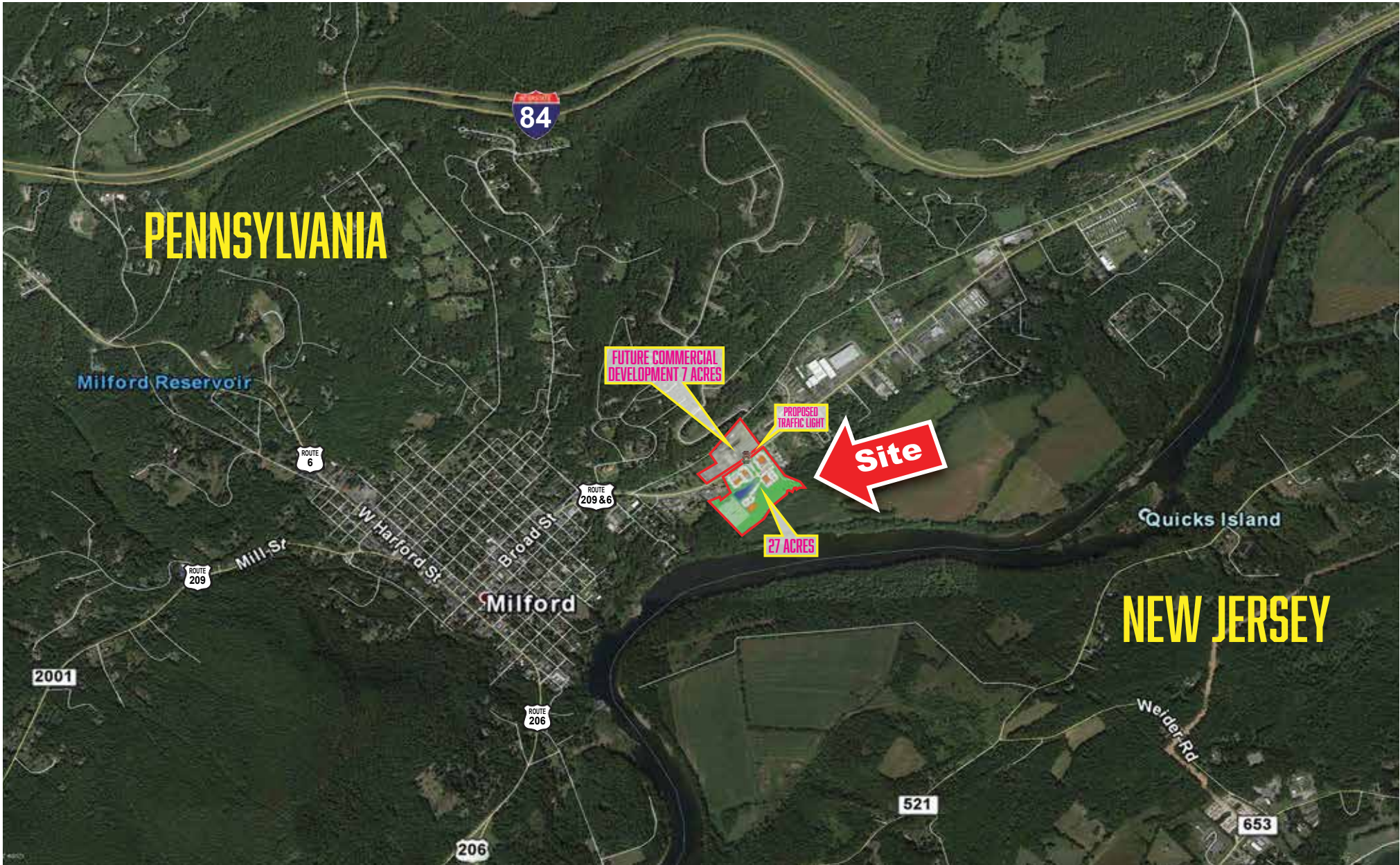
Information contained herein has been obtained from owner of the property or from sources deemed reliable. We have no reason to doubt its accuracy but make no warranty or representation. All information is submitted subject to errors, omissions, changes, withdrawal without notice and any special listing conditions of the owner.

610-941-4034
LPRE.COM
1000 FAYETTE STREET
CONSHOHOCKEN, PENNSYLVANIA 19428



MILFORD TOWN CENTER AVAILABLE FOR LEASE, SALE OR JOINT VENTURE

**SITE
AERIAL**



**EXCLUSIVE
AGENT:**



JAMES DePETRIS
610.941.4034 x108
610.304.4478 cell
jdepetris@lpre.com

MILFORD TOWN CENTER
Routes 209 / 6 | Milford, PA 18337

MILFORD TOWN CENTER AVAILABLE FOR LEASE, SALE OR JOINT VENTURE

REGIONAL MAP



Information contained herein has been obtained from the Owner of the Property or from sources deemed reliable. We have no reason to doubt its accuracy but make no warranty or representation. All information is submitted subject to errors, omissions, changes, withdrawal without notice and any special listing conditions of the Owner. 5/22



EXCLUSIVE AGENT:



JAMES DePETRIS
610.941.4034 x108
610.304.4478 cell
jdepetris@lpre.com

MILFORD TOWN CENTER

Routes 209 / 6 | Milford, PA 18337