

OFFICE FOR LEASE

625 PLUMAS ST
RENO, NV 89509

RATE | NEGOTIABLE

ZONING | MUSV

SIZE | 1,947 SF

PATRICK RIGGS
priggs@dicksoncg.com
775.220.4957 **CELL**
Lic# 0180878

DCG



333 Holcomb Ave., Ste. 300 | Reno, Nevada 89502 | 775.850.3100 | DicksonCG.com



AREA MAP

EXECUTIVE SUMMARY

- Located in the desirable Midtown submarket
- Strong visibility directly located on Plumas St
- Located within walking distance to Reno's downtown CBD, restaurants, and retail amenities.
- Ample employee and customer parking
- Available for Occupancy : Q1 2021



CALIFORNIA AVE

PROPERTY SITE

PLUMAS ST

HUMBOLT ST





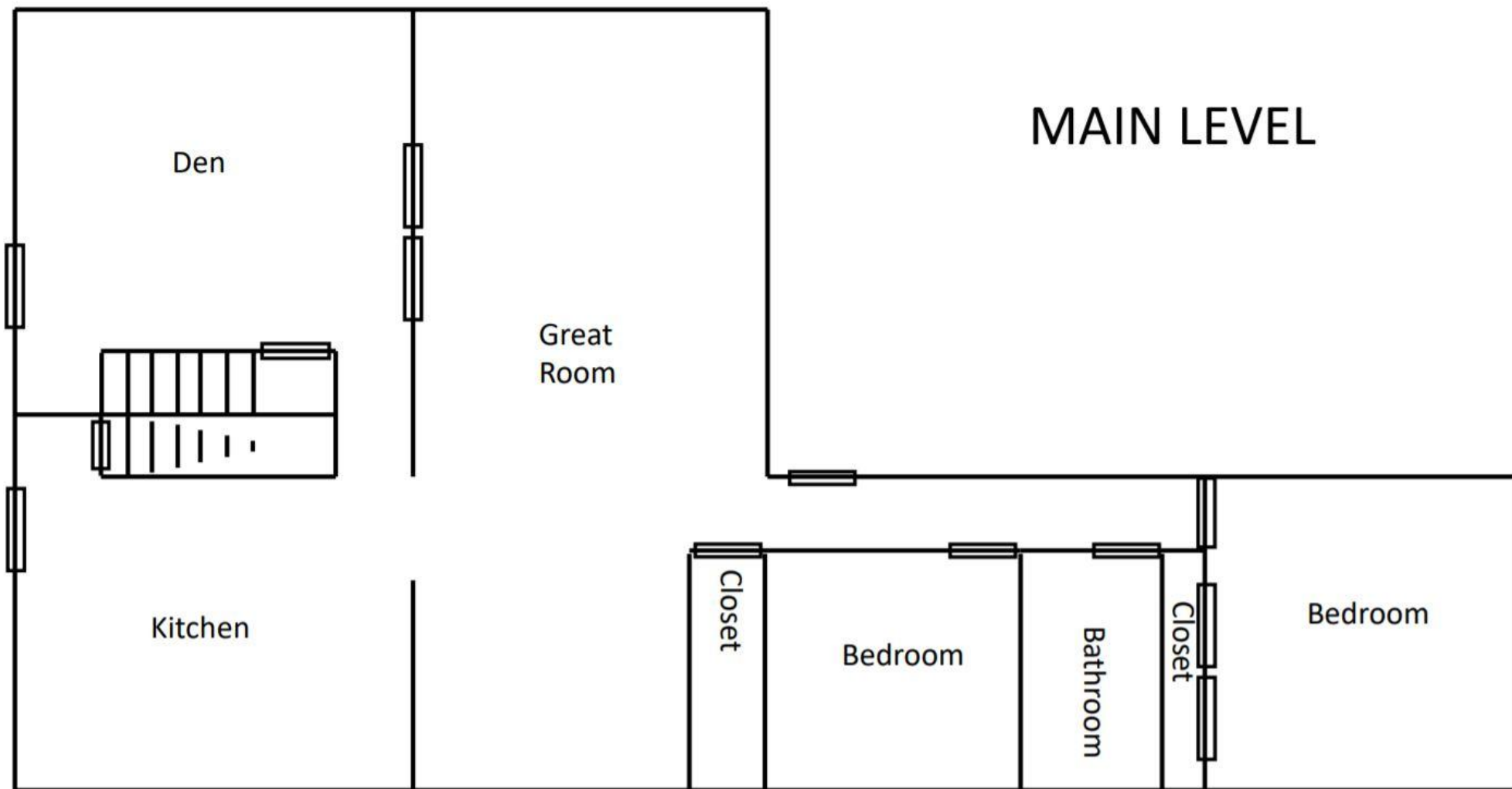
PLUMAS ST

PROPERTY SITE



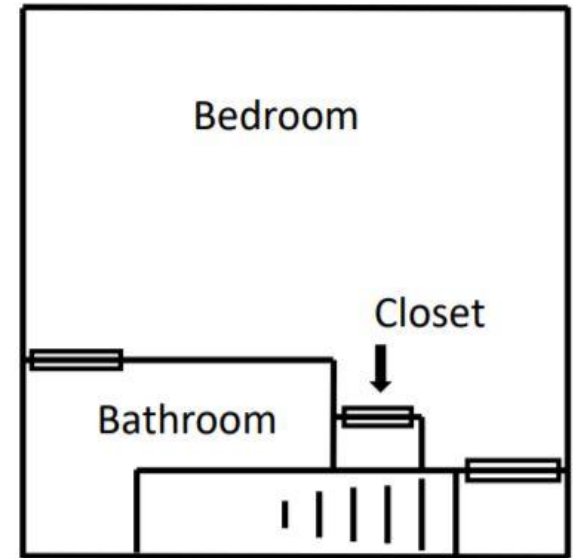
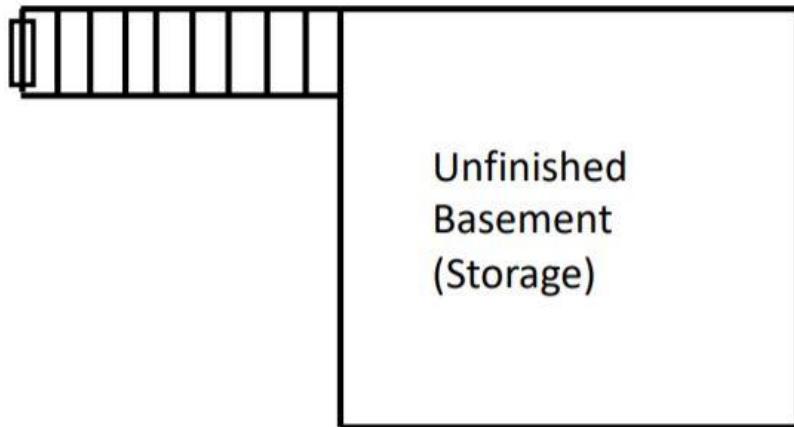


FLOOR PLAN



FLOOR PLAN

LOWER LEVEL



UPPER LEVEL